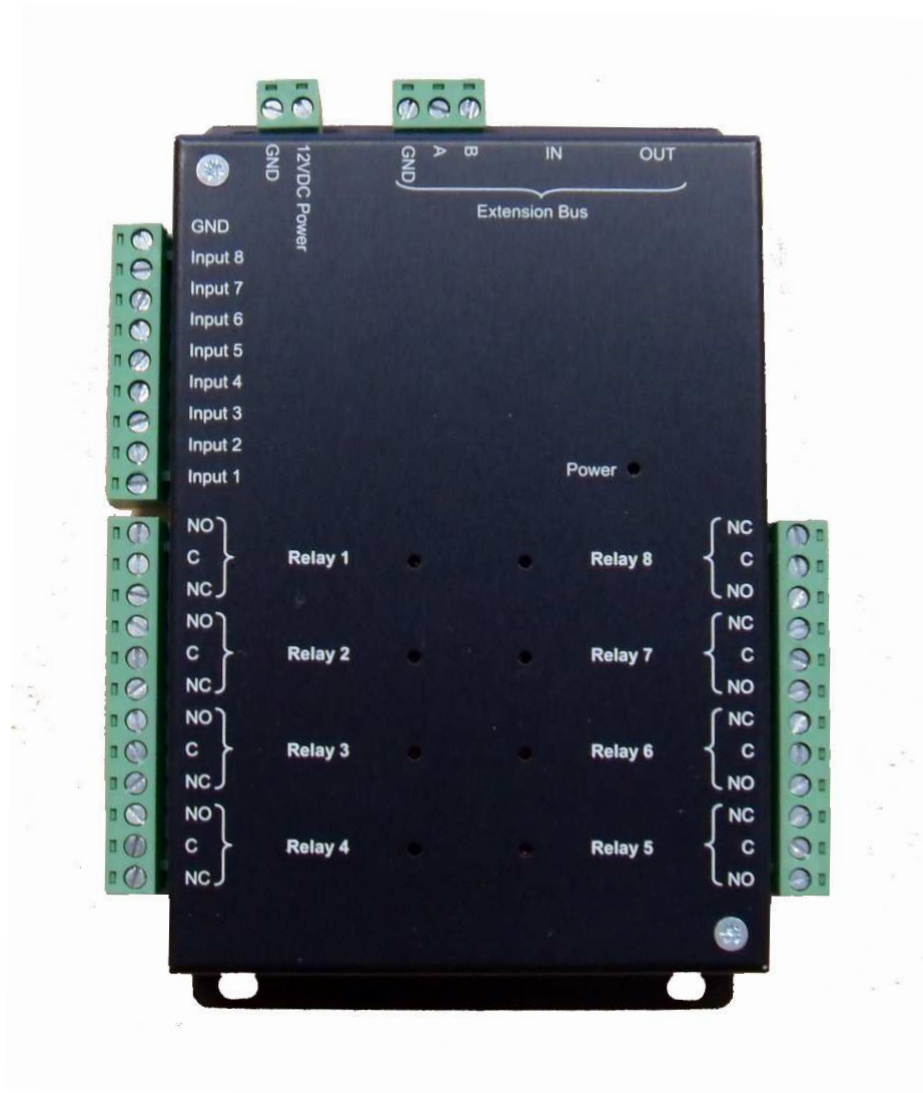




Technical Instructions

MT15000/EXT-IO
MT15000/EXT-IO-M



CONTENTS

Information and Recommendations..... 3
Specifications 3
1) MT15000/EXT-IO
2) MT15000/EXT-IO-M
3) COMPATIBILITY
Connection to MT15000/2 control unit..... 4
Using a 4-Level input 5
Setting Module Parameters in SWAMIGO3 6
Terminal block features..... 7

Dear Customer,

You have purchased a MT15000/EXT-IO module produced by PRASTEL France.

We thank you for your interest in our products and wish you all the best with the installation procedure.

PRASTEL France



INFORMATION AND RECOMMENDATIONS

- CE** In accordance with UTE C00-200 European Directive describing Directives 89/336EEC and 92/31 EEC, MT15000/EXT-IO complies with the following standards:
- NF EN 50081-1 on electromagnetic emissions and
 - NF EN 50082-1 on electromagnetic sensitivity.

- o **Wiring recommendations:** the cables used to connect readers, network and other devices must be installed in accordance with the instructions for Level 2, as set forth in standard NF EN 61000-4-4 (protected environment).
- o **This product must be installed by a qualified company.** Inappropriate installation and use may entail a risk of electric shock or fire. Please read these technical instructions before installing the product and follow assembly instructions thereof.
- o **All internal capacitors in the 220V version will lose charge at a healthy level after 60 seconds once power has been turned off, under normal conditions. However, in the event of a failure, the charge may be maintained for much longer and adequate precautions are required before using the product.**

SPECIFICATIONS

1) MT15000/EXT-IO

Maximum consumption.....	500 mA
Power voltage	9 – 14V DC
Weight, with housing.....	200g
Housing dimensions	157 x 120 x 30 mm
Operating temperature.....	- 20°C to + 50°C
Command relays.....	1A / 12V – 1A / 24V

2) MT15000/EXT-IO-M

Weight, with housing.....	4Kg
Housing dimensions	330 x 330 x 90mm
Operating temperature.....	- 20°C to + 50°C
<i>Integrated 220V power supply:</i>	
Output voltage.....	12V
Maximum output current	5A
Battery connection	12V, 7Ah
Command relays.....	1A / 12V – 1A / 24V

3) COMPATIBILITY

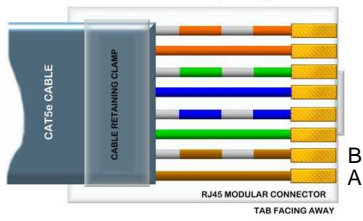
MT15000/2 control unit version: V1.4 or higher
 SWAMIGO3 software version: V1.0.0.7 or higher
 To update your MT15000/2 control unit, please go to “Update” menu in SWAMIGO3, select “UTL V1.4.bin” file and check all control units to be updated.

Warning

Before doing this, make sure that your control unit is properly connected to your software (“Site Setup” menu and “Equipment Status”).



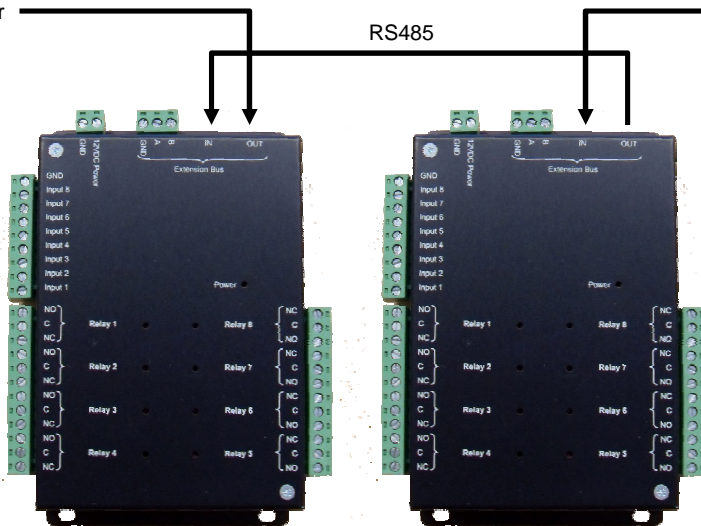
CONNECTION TO MT15000/2 CONTROL UNIT



MT15000/2	MT15000/EXT-IO
A	A
B	B



Up to 10 modules per MT15000/2



You may also use A and B terminal blocks on MT15000/EXT-IO modules to connect your RS485 bus.

Information

- 2 wires (2 pairs recommended)
- Max. Distance: 750m
- Cable Type: 0.6mm (SYT recommended)

Warning

Do not connect the wires near other high voltage or current cables, including 220V and higher. Make sure you use the same pair for wires A and B.

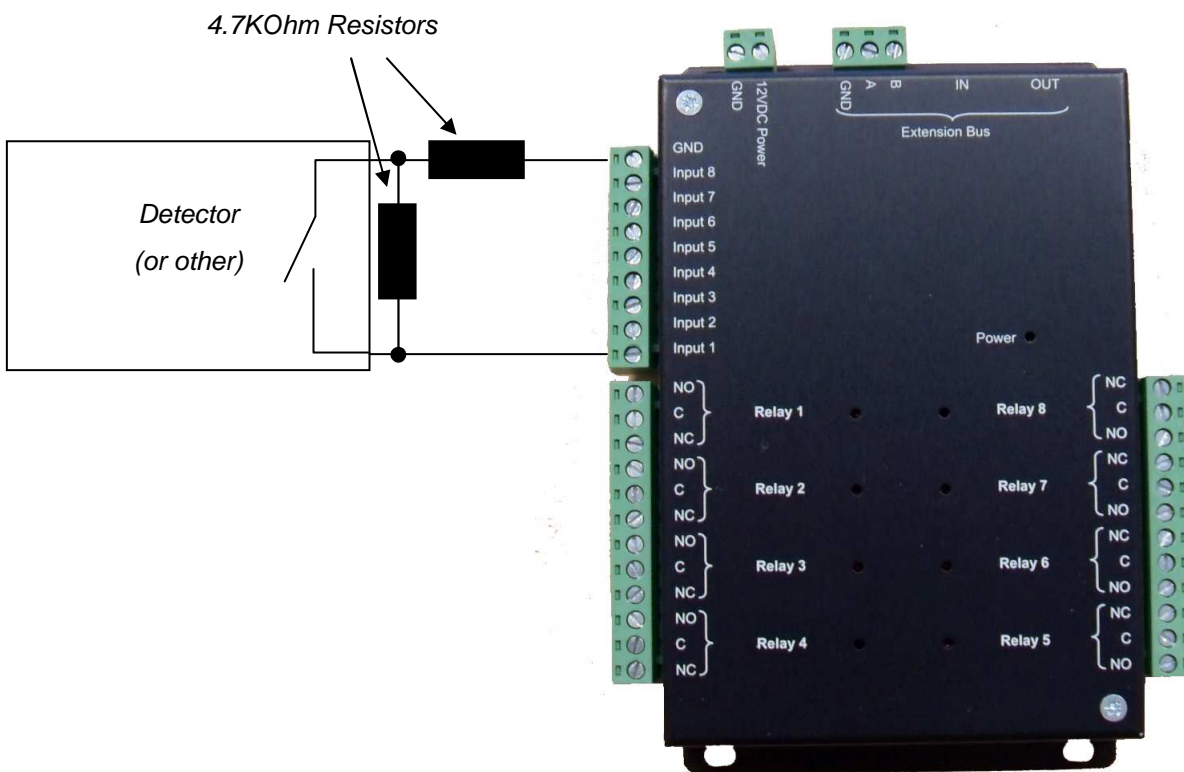
USING A 4-LEVEL INPUT

A 4-level input (or balanced loop) will help detect the following:

- Active or idle input
- Cut or shorted wire (damaged input)

Before using this type of input, two 4.7KOhm resistors (delivered with the module) must be installed on the wires connecting the input to your detector (or another device).

To that end, please refer to the diagram below:



Note

Each module input may be separately used as 2 or 4-level input. To set up such input modes, go to “Technical” menu, “Site Setup”, and click the relevant modules.

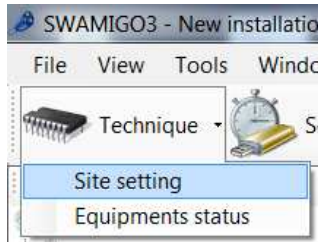
Likewise, in order to adjust detection levels (if you use another resistor, for instance) you may calibrate each input: go to “Technical” menu, “Site Setup”, then click the relevant modules and the “Calibrate” button for the desired input.

You may also adjust detection tolerance from this menu.

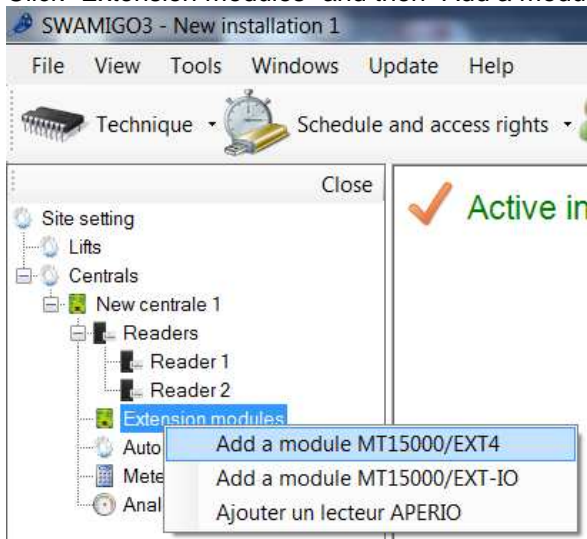
SETTING MODULE PARAMETERS IN SWAMIGO3

The module ID will be required to set up your SWAMIGO3 software. It is provided on a label placed on top of the housing (e.g: ID: 00001). Please write down this number.

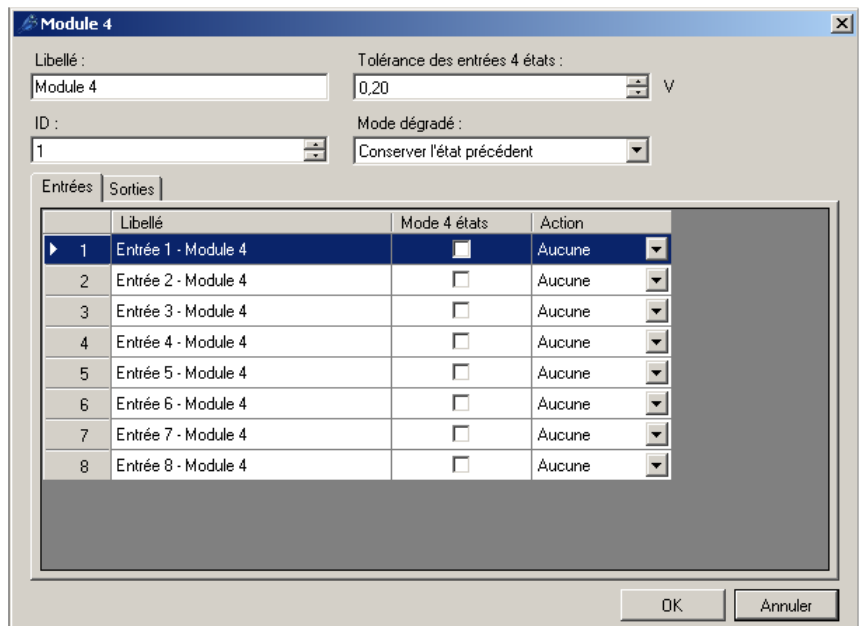
Click “Technical” button, then “Site Setting”.



Click “Extension modules” and then “Add a module...” below the control unit to which your module is connected.



The following window will open:



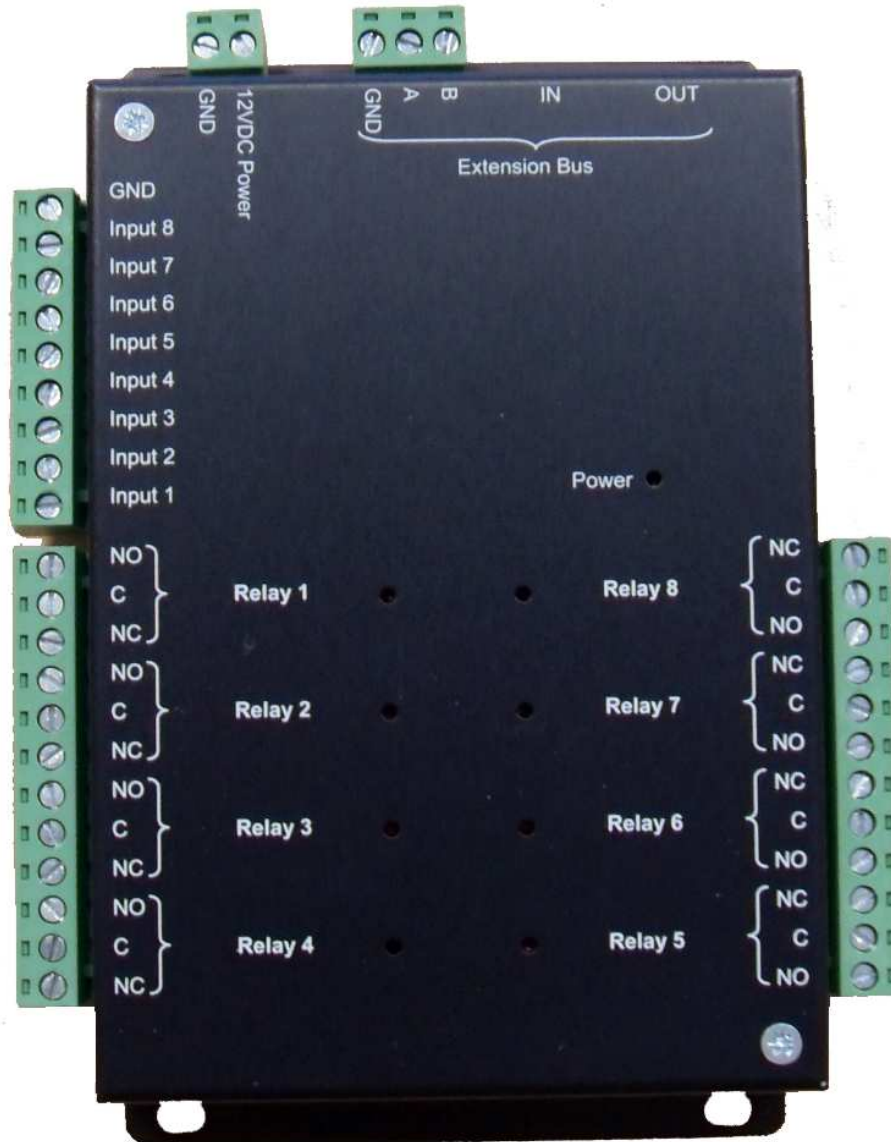
Enter your module ID

Set up fail soft operation (loss of connection between the module and the control unit)

You may also rename each input and set up their mode (2 or 4-level)

You may also rename each output (“Outputs” tab)

TERMINAL BLOCK FEATURES



Warning

For all inputs (2 or 4-level mode), make sure to use the module GND as shared current.

For all outputs, make sure to use the diodes delivered with the product if electromagnetic devices are controlled (release, sucker, relay, etc.).