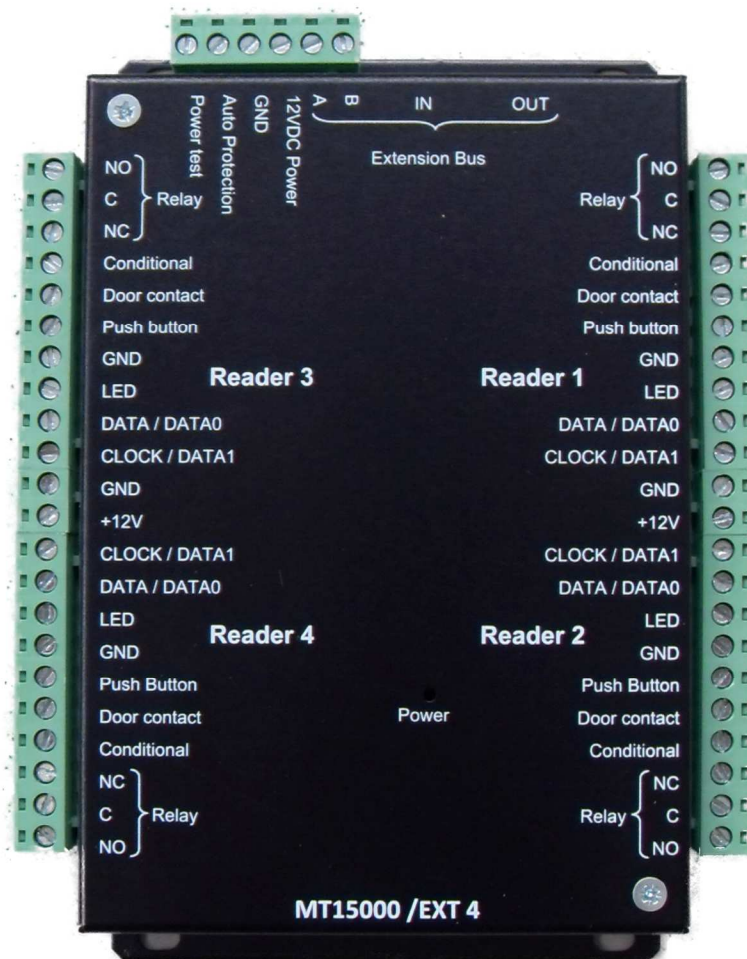




# Technical Instructions

## MT15000/EXT4 MT15000/EXT4-M



**CONTENTS**

**Information and Recommendations..... 3**

**Specifications ..... 3**

    1) MT15000/EXT4 .....  
    2) MT15000/EXT4-M .....  
    3) PROTECTION .....

**Wiegand or Data Clock Protocol device connection ..... 4**

**Connection to MT15000/2 control unit..... 5**

**Connecting a fail-safe electric strike and electro magnet..... 6**

**Connecting a standard strike ..... 7**

**Setting Module Parameters in SWAMIGO3 ..... 8**

**Terminal block features..... 9**

*Dear Customer,*

*You have purchased a MT15000/EXT4 module produced by PRASTEL France.*

*We thank you for your interest in our products and wish you all the best with the installation procedure.*

*PRASTEL France*



## INFORMATION AND RECOMMENDATIONS



In accordance with UTE C00-200 European Directive describing Directives 89/336EEC and 92/31 EEC, MT15000/EXT4 complies with the following standards:

- NF EN 50081-1 on electromagnetic emissions and
- NF EN 50082-1 on electromagnetic sensitivity.

**Wiring recommendations:** the cables used to connect readers, network and other devices must be installed in accordance with the instructions for Level 2, as set forth in standard NF EN 61000-4-4 (protected environment).

**This product must be installed by a qualified company.** Inappropriate installation and use may entail a risk of electric shock or fire. Please read these technical instructions before installing the product and follow assembly instructions thereof.

**All internal capacitors in the 220V version will lose charge at a healthy level after 60 seconds once power has been turned off, under normal conditions. However, in the event of a failure, the charge may be maintained for much longer and adequate precautions are required before using the product.**

## SPECIFICATIONS

### 1) MT15000/EXT4

Maximum consumption.....	400 mA
Power voltage .....	9 – 14V DC
Weight.....	200g
Dimensions.....	157 x 120 x 30 mm
Operating temperature.....	- 20°C to + 50°C
Relay outputs .....	1A / 12V – 1A / 24V

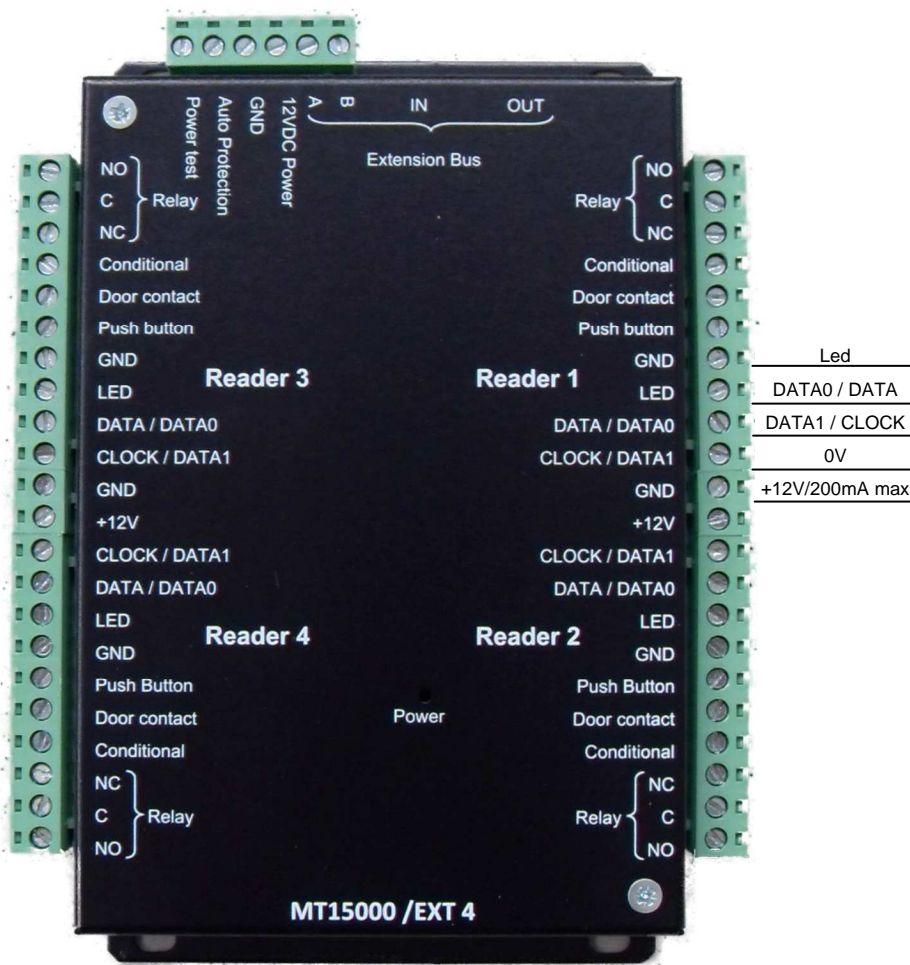
### 2) MT15000/EXT4-M

Weight, with housing.....	4Kg
Housing dimensions.....	330 x 275 x 80mm
Operating temperature.....	- 20°C to + 50°C
<i>Integrated 220V power supply:</i>	
Output voltage.....	12V
Maximum output current .....	5A
Battery connection .....	13,6V
Relay outputs .....	1A / 12V – 1A / 24V

### 3) PROTECTION

The module is fitted with a fuse on 12V input inside the housing. Check the fuse if the power LED does not light up when the module is under power.

**WIEGAND OR DATA CLOCK PROTOCOL DEVICE CONNECTION**



**WIEGAND:**

- o Proximity Readers (PRASTEL, HID, STID, DESTAIR, etc.)
- o Keypads (PRASTEL, XPR, etc.)
- o Biometric Readers (PRASTEL, etc.)
- o Radio Receivers (PRASTEL, etc.)
- o DALLAS (via interface)

**CLOCK & DATA:**

- o Magnetic Strip Readers
- o Bar Code Readers
- o Proximity Readers
- o Radio Receivers

**Information**

5 wires (3 pairs recommended)  
 Max. Distance: 100 m  
 Cable Type: 0.6 mm (SYT recommended)  
 Screen: Optional

**Warning**

*If you use an external power supply for your proximity readers, please be sure to **connect all different masses with the one on the module.***

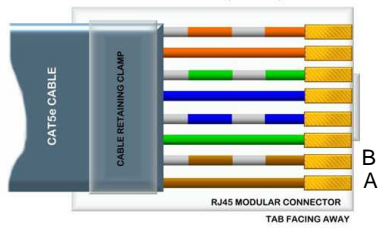
**Warning**

Do not connect the jumper wires near other high voltage or current cables, including 220V and higher.

**Note:**

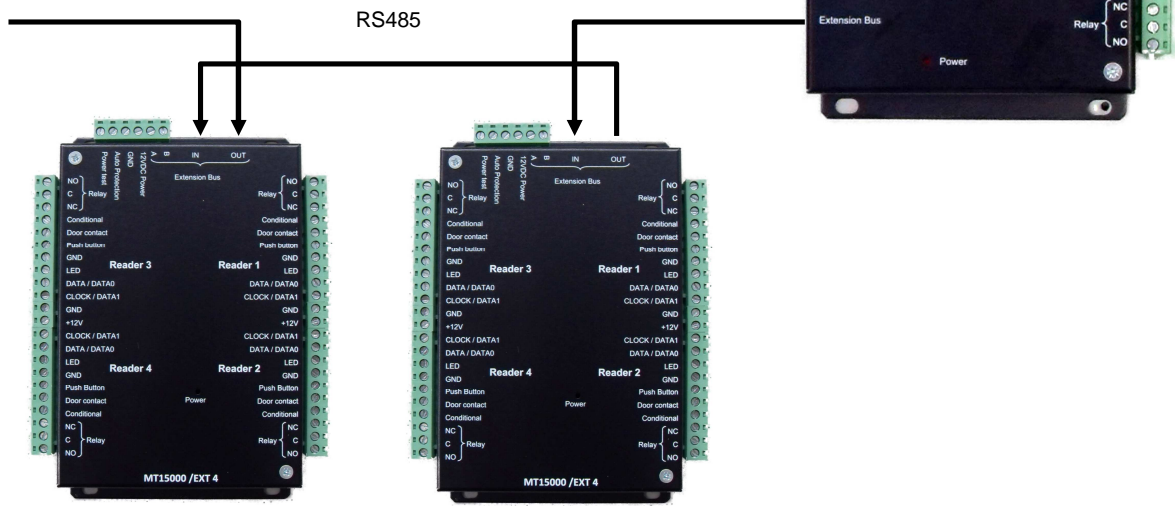
Each reader may support a separate technology  
*Example: Reader 1 in Wiegand, Reader 2 in Data Clock*

**CONNECTION TO MT15000/2 CONTROL UNIT**



MT15000/2	MT15000/EXT4
A	A
B	B

Up to 10 modules per MT15000/2



You may also use A and B terminal blocks on MT15000/EXT4 modules to connect your RS485 bus.

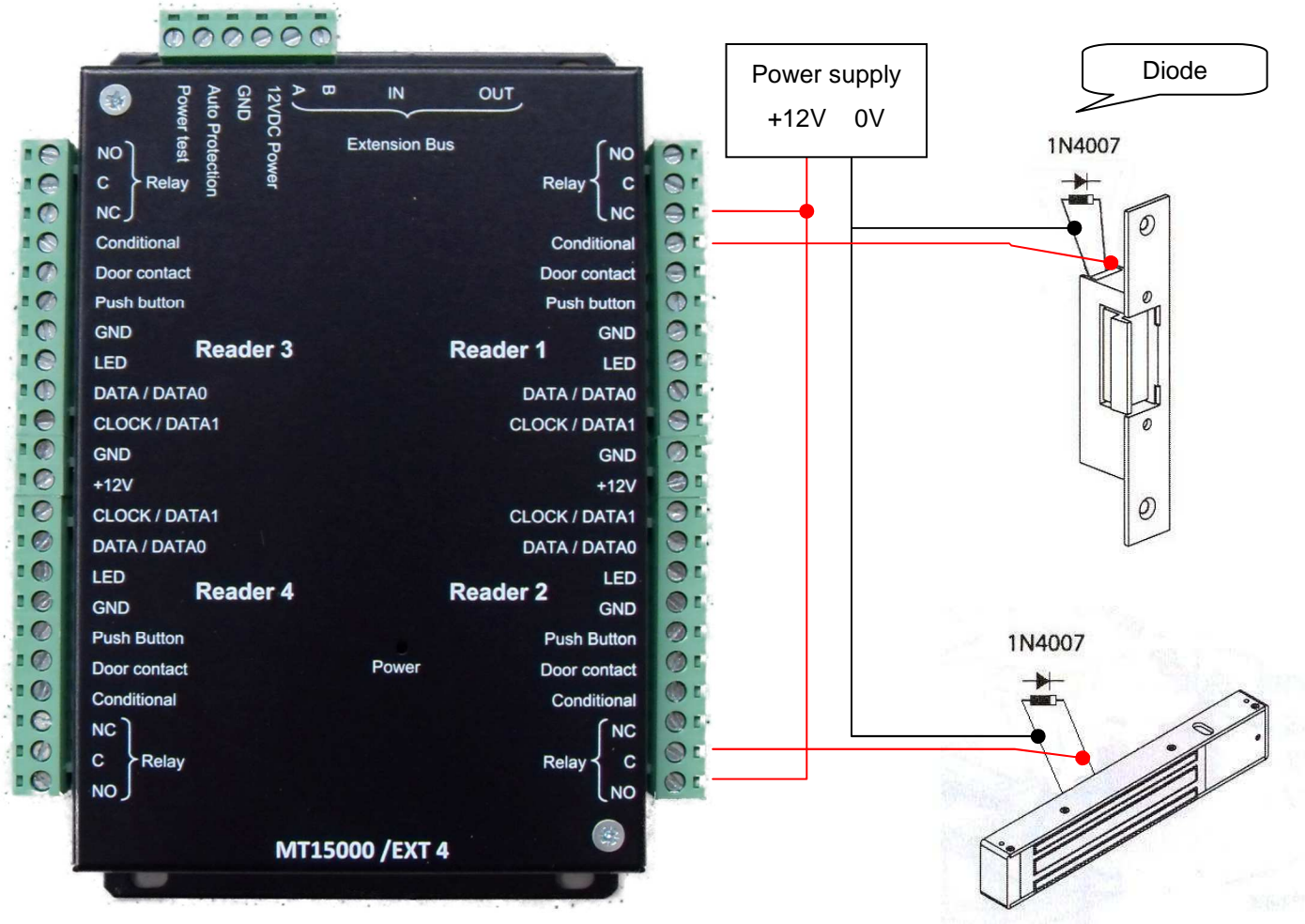
**Information**

- 2 wires (2 pairs recommended)
- Max. Distance: 750m
- Cable Type: 0.6 mm (SYT recommended)

**Warning**

Do not connect the wires near other high voltage or current cables, including 220V and higher. Make sure to use the same pair for wires A and B.

**CONNECTING A FAIL-SAFE ELECTRIC STRIKE AND AN ELECTRO MAGNET**  
**(electric strike and electro magnet remain operational when not receiving power)**

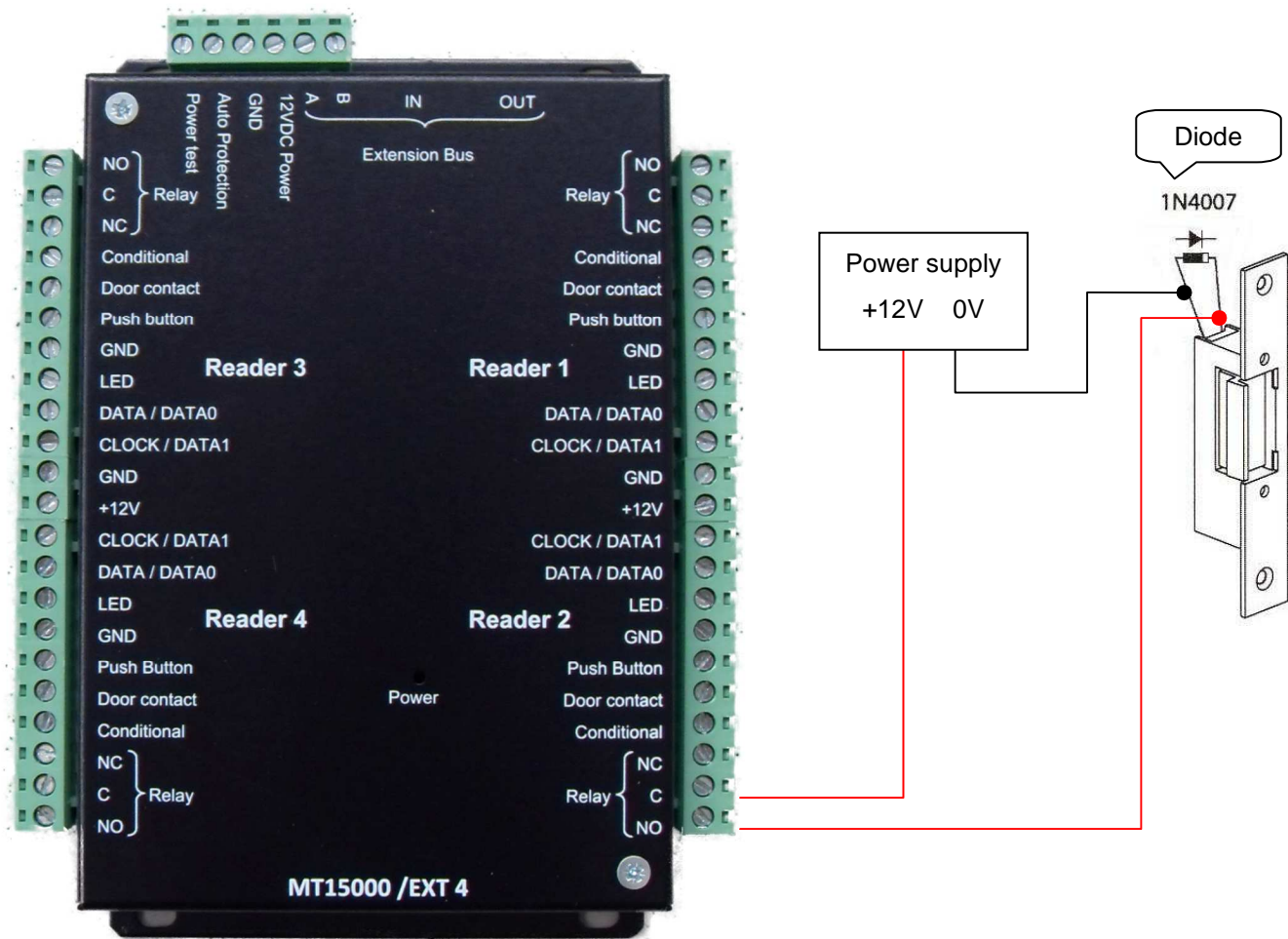


**Warning**

The anti-reverse diodes delivered with the control unit must be used and connected as shown in the above wiring diagram in order to avoid any unpredictable malfunctions caused by back-currents that might disturb the system's appropriate performance.

The above wiring diagram must be followed even when using an additional backup power supply for locking, which is separate to the control unit power supply.

**CONNECTING A STANDARD STRIKE**



**Warning**

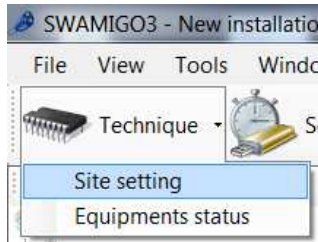
The anti-reverse diodes delivered with the control unit must be used and connected as shown in the above wiring diagram in order to avoid any unpredictable malfunctions caused by back-currents that might disturb the system's appropriate performance.

The above wiring diagram must be followed even when using an additional backup power supply for locking, which is separate to the control unit power supply.

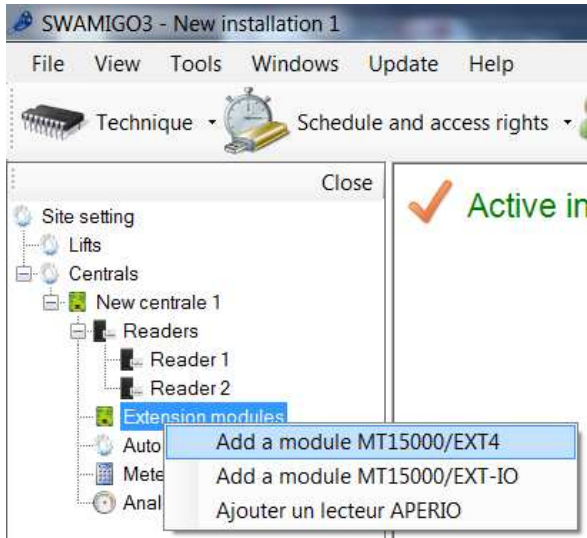
### SETTING MODULE PARAMETERS IN SWAMIGO3

The module ID will be required to set up your SWAMIGO3 software. This ID is provided on a label placed on top of the housing (e.g: ID: 00001). Please write down this number.

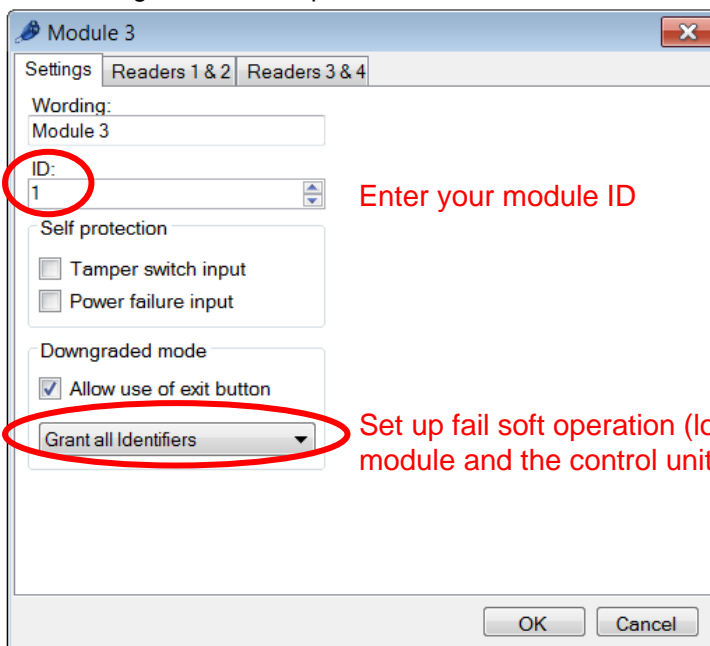
From “Technique” menu, click “Site Setting” :



Click “Door Modules” and then “Add Module” below the control unit to which your module is connected.



The following window will open:



Enter your module ID

Set up fail soft operation (loss of connection between the module and the control unit)



**TERMINAL BLOCK FEATURES**

