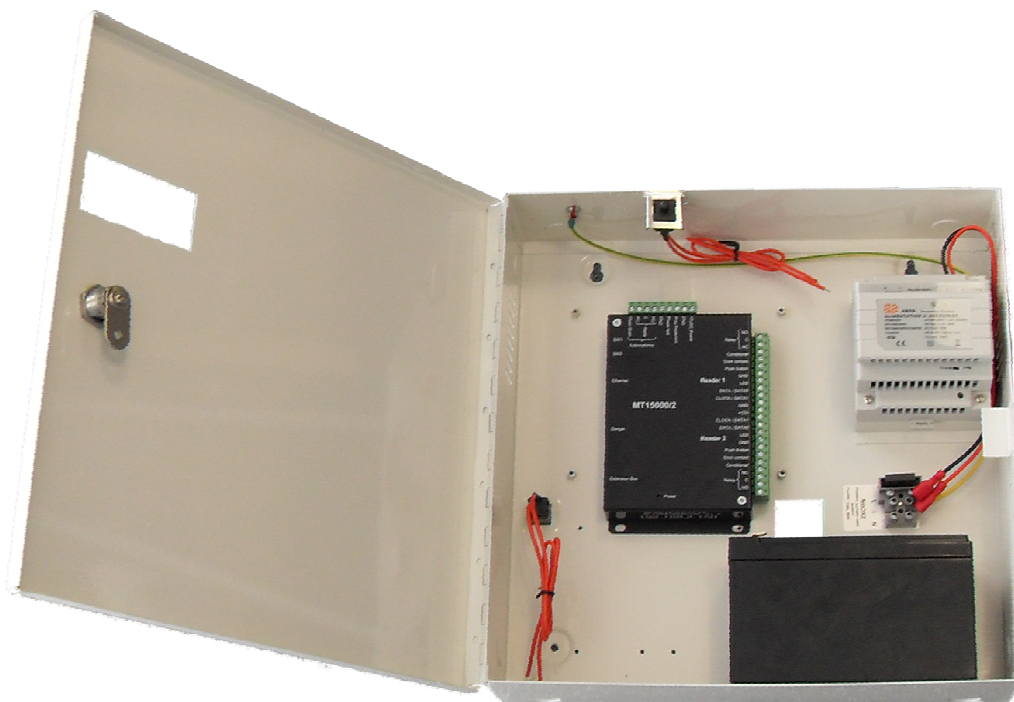




# Technical Instructions

MT15000/2  
MT15000/2-M



**CONTENTS**

**Information and Recommendations..... 3**

**Specifications ..... 3**

    1) MT15000/2 ..... 3

    2) MT15000/2-M ..... 3

    3) PROTECTION ..... 3

**Wiegand or data clock device connection ..... 4**

**MT15000/EXT4 and MT15000/EXT4-M extension modules connection ..... 5**

**Connecting a fail-safe electric strike and electro magnet..... 6**

**Connecting a standard strike ..... 7**

**MT15000/2 control unit connection to Ethernet network..... 8**

**SWAMIGO3 dongle installation ..... 9**

**Terminal block features..... 10**

**"Reset" buttons use..... 11**

*Dear Customer,*

*You have purchased a MT15000/2 control unit produced by PRASTEL France.*

*We thank you for your interest in our products and wish you all the best with the installation procedure.*

*PRASTEL France*



## INFORMATION AND RECOMMENDATIONS



In accordance with UTE C00-200 European Directive describing Directives 89/336CEE and 92/31 EEC, MT15000/2 complies with the following standards:

- NF EN 50081-1 on electromagnetic emissions and
- NF EN 50082-1 on electromagnetic sensitivity.

**Wiring recommendations:** the cables used to connect readers, network and other devices must be installed in accordance with the instructions for Level 2, as set forth in standard NF EN 61000-4-4 (protected environment).

**This product must be installed by a qualified company.** Inappropriate installation and use may entail a risk of electric shock or fire. Please read these technical instructions before installing the product and follow assembly instructions thereof.

**All internal capacitors in the 220V version will lose charge at a healthy level after 60 seconds once power has been turned off, under normal conditions. However, in the event of a failure, the charge may be maintained for much longer and adequate precautions are required before using the product.**

## SPECIFICATIONS

### 1) MT15000/2

Maximum consumption.....	300 Ma
Power voltage.....	9 – 14VDC
Weight.....	150 g
Dimensions.....	157 x 108 x 30 mm
Operating temperature.....	- 20°C to + 50°C
Relay outputs.....	1A / 12V – 1A / 24V

### 2) MT15000/2-M

Weight, with housing.....	4 Kg
Housing dimensions.....	330 x 330 x 90 mm
Operating temperature.....	- 20°C to + 50°C
<i>Integrated 220V power supply:</i>	
Output voltage.....	12V
Maximum output current.....	5A
Battery connection.....	13,6V

### 3) PROTECTION

The control unit is fitted with a fuse on 12V input inside the housing. Check the fuse if the power LED does not light up when the module is under power.

**WIEGAND OR DATA CLOCK PROTOCOL DEVICE CONNECTION**



**WIEGAND :**

- o proximity reader (PRASTEL, HID, STID, INDALA, ...)
- o keypad (PRASTEL, XPR, ...)
- o Biometric readers (PRASTEL, ...)
- o Radio receivers (PRASTEL, ...)
- o DALLAS (via interface)

**DATA CLOCK :**

- o Magnetic strip readers
- o Bar codes readers
- o Proximity reader
- o Radio receivers

**Information :**

5 wires (3 pairs recommended)  
 Max distance : 100m  
 Cable type : 0,6mm (SYT advised)  
 Screen : Optional

**Warning**  
 If you use an external power supply for your proximity readers, please be sure to **connect all different masses with the one on the control unit.**

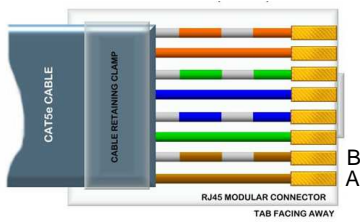
**Warning**

Do not connect the jumper wires near other high voltage or current cables, including 220V and higher.

**Note:**

Each reader may support a separate technology  
 Example: Reader 1 in Wiegand, Reader 2 in Data Clock

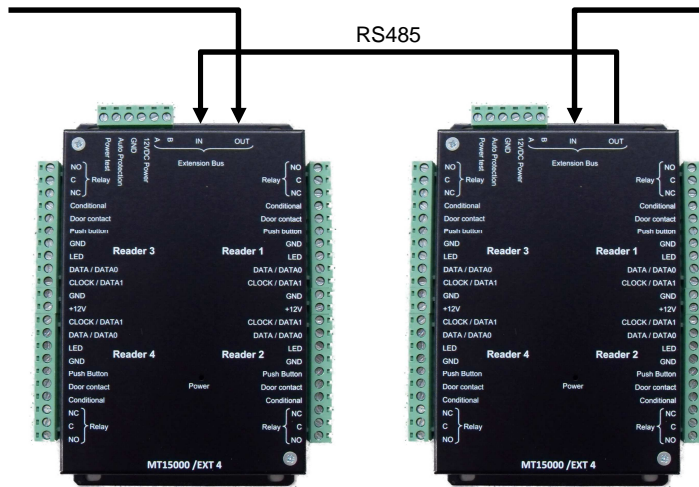
**MT15000/EXT4 AND MT15000/EXT4-M EXTENSION MODULES CONNECTION**



MT15000/2	MT15000/EXT4
A	A
B	B



Up to 10 modules per MT15000/2



You may also use A and B terminal blocks on MT15000/EXT4 modules to connect your RS485 bus.

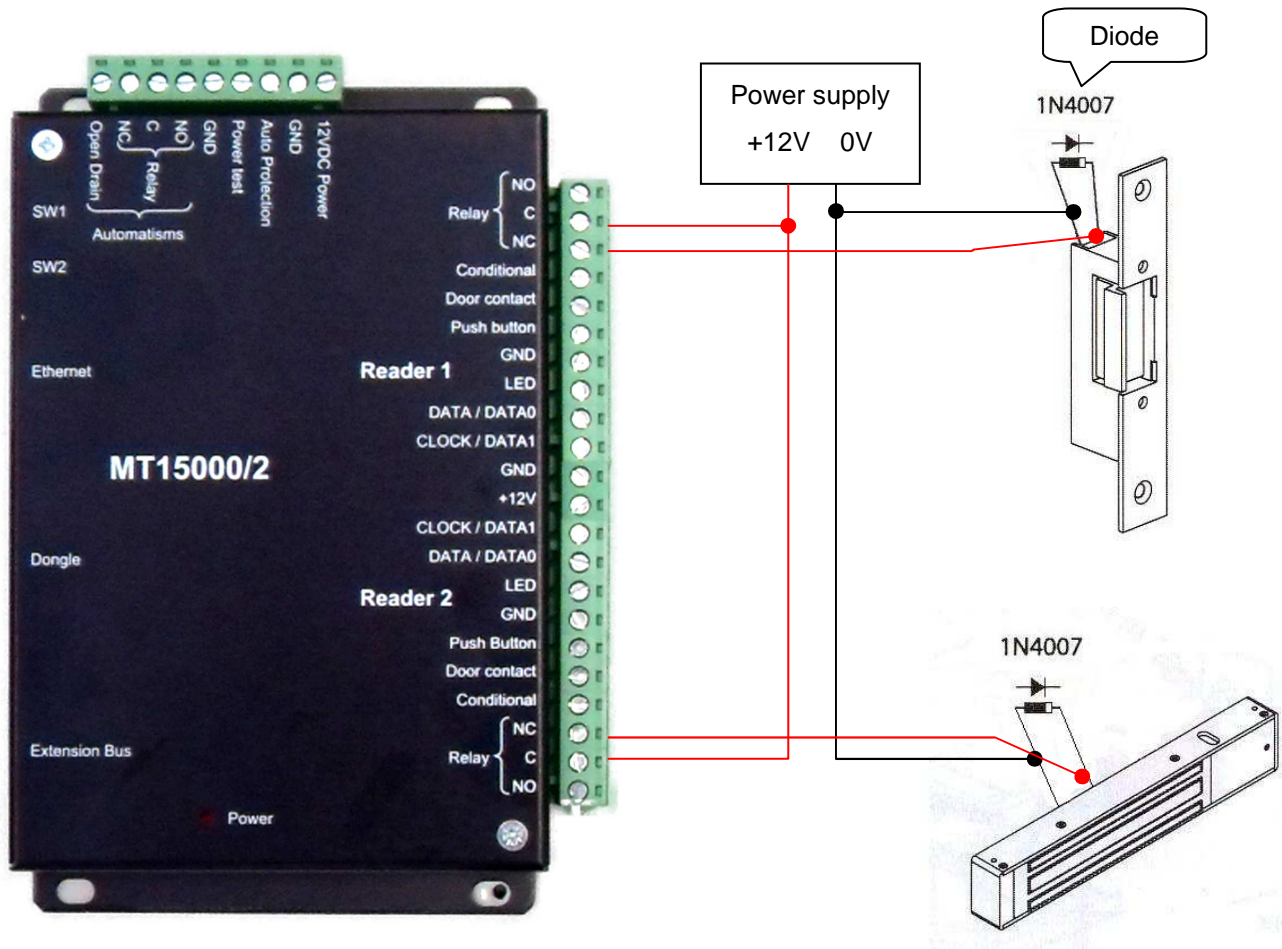
**Information**

- 2 wires (2 pairs recommended)
- Max. Distance: 750m
- Cable Type: 0.6 mm (SYT recommended)

**Warning**

Do not connect the wires near other high voltage or current cables, including 220V and higher. Make sure to use the same pair for wires A and B.

**CONNECTING A FAIL-SAFE ELECTRIC STRIKE AND AN ELECTRO MAGNET**  
**(electric stike and electro magnet remain operational when not receiving power)**

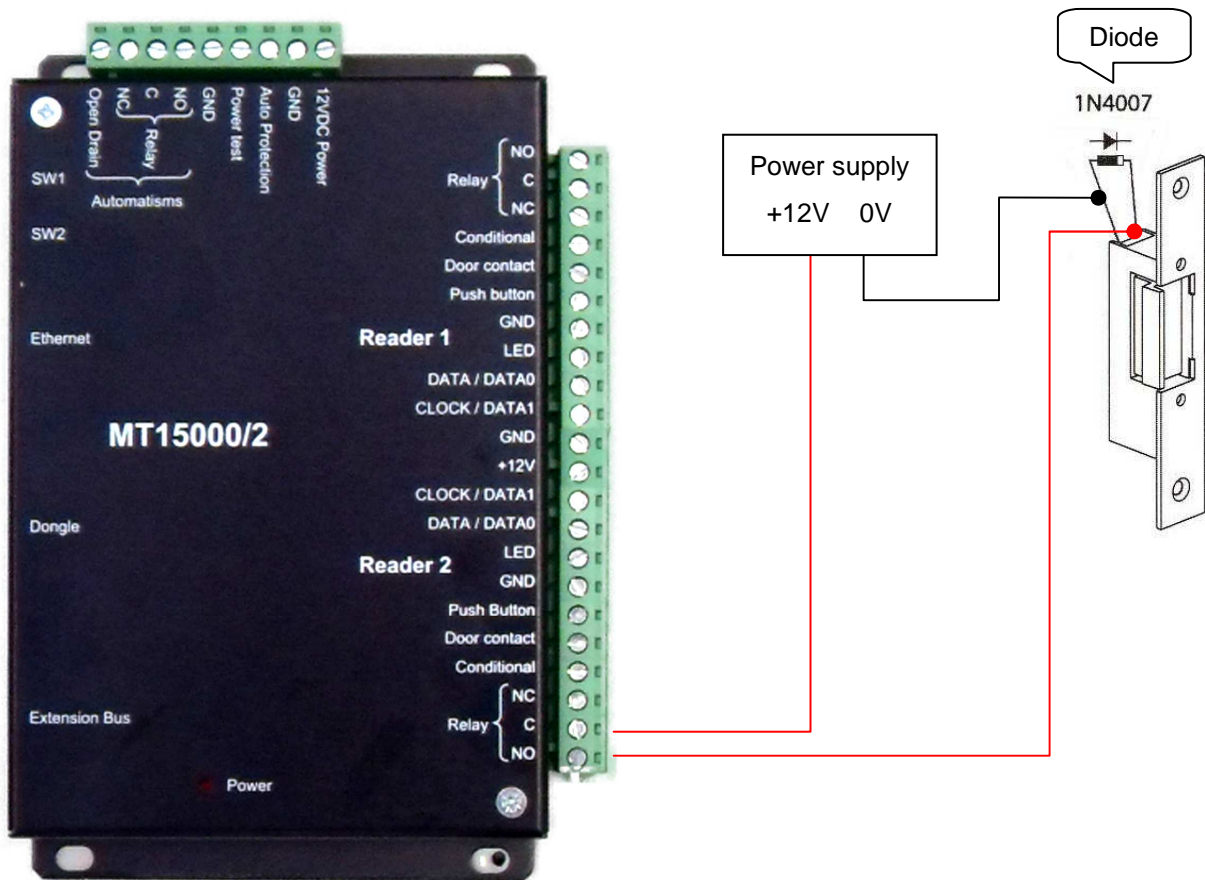


**Warning**

The anti-reverse diodes delivered with the control unit must be used and connected as shown in the above wiring diagram in order to avoid any unpredictable malfunctions caused by back-currents that might disturb the system's appropriate performance.

The above wiring diagram must be followed even when using an additional backup power supply for locking, which is separate to the control unit power supply.

### CONNECTING A STANDARD STRIKE

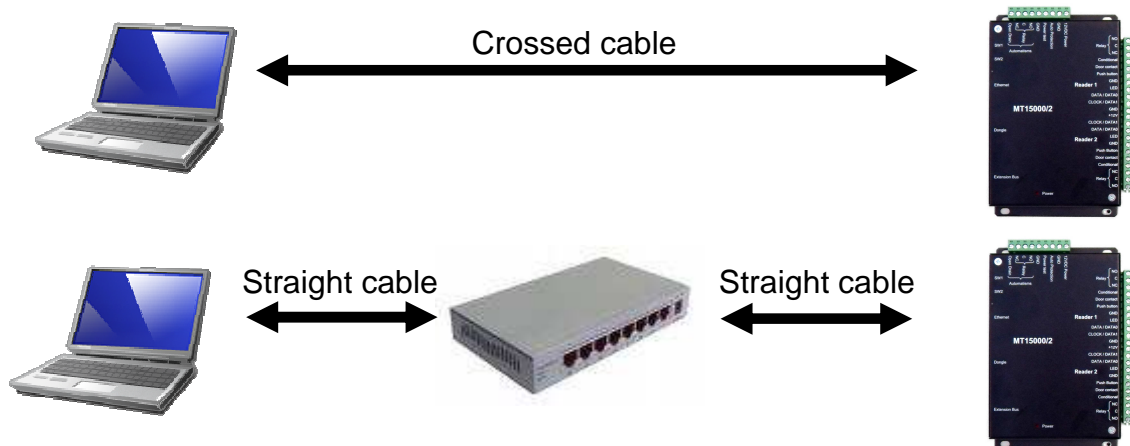


**Warning**

The anti-reverse diodes delivered with the control unit must be used and connected as shown in the above wiring diagram in order to avoid any unpredictable malfunctions caused by back-currents that might disturb the system's appropriate performance.

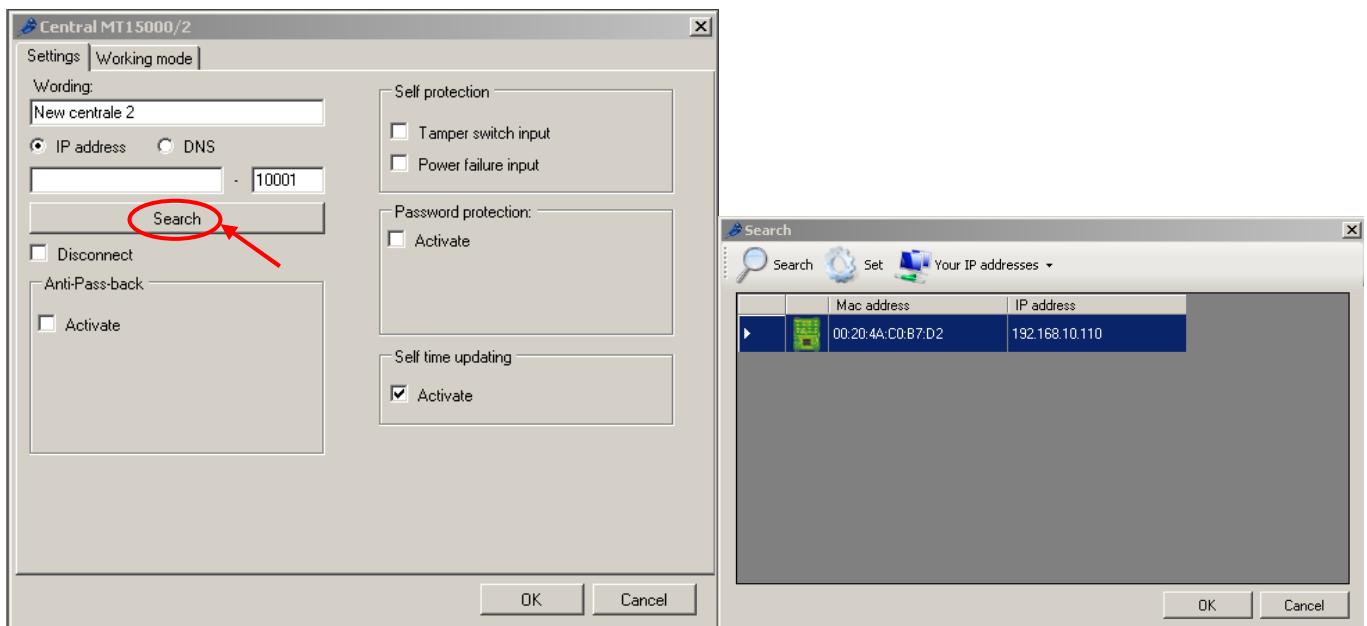
The above wiring diagram must be followed even when using an additional backup power supply for locking, which is separate to the control unit power supply.

### MT15000/2 AND MT15000/2-M CONTROL UNIT CONNECTION TO ETHERNET NETWORK



Every MT15000/2 control unit has an IP address. This address is indicated on sticker on the control unit casing. To set a different IP address, you can use the menu "automatic detection" of SWAMIGO3. For that purpose, proceed as follows:

- After creating the installation, at the first launch, SWAMIGO3 suggests to create a new control unit
- Click « Search »
- A list of all the detected control units appears
- Double-click on the control unit you wish to add to the installation
- Check in the devices status that your control unit is connected.





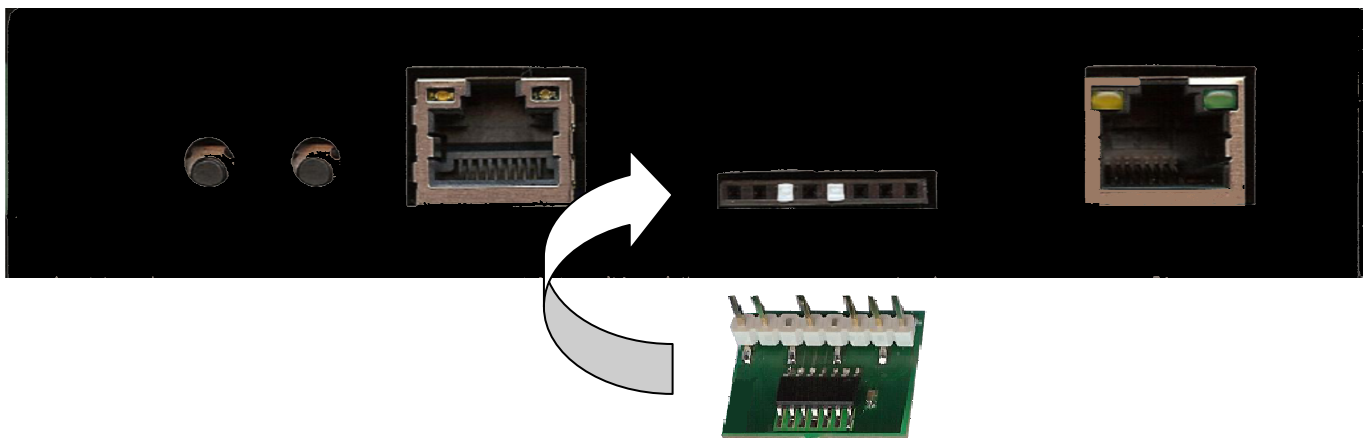
**SWAMIGO3 DONGLE INSTALLATION**

To use SWAMIGO3 software, you may need, according to the site specifications (see following board), to install a dongle on your control unit.

Dongle use :

<i>Readers installed on site</i>	<i>Software</i>	<i>Dongle</i>
Up to 2 readers	SWAMIGO3 LIGHT	No dongle required
Up to 10 readers	SWAMIGO3-10	Dongle required
Up to 40 readers	SWAMIGO3-40	Dongle required
Up to 140 readers	SWAMIGO3-140	Dongle required
Up to 840 readers	SWAMIGO3-840	Dongle required

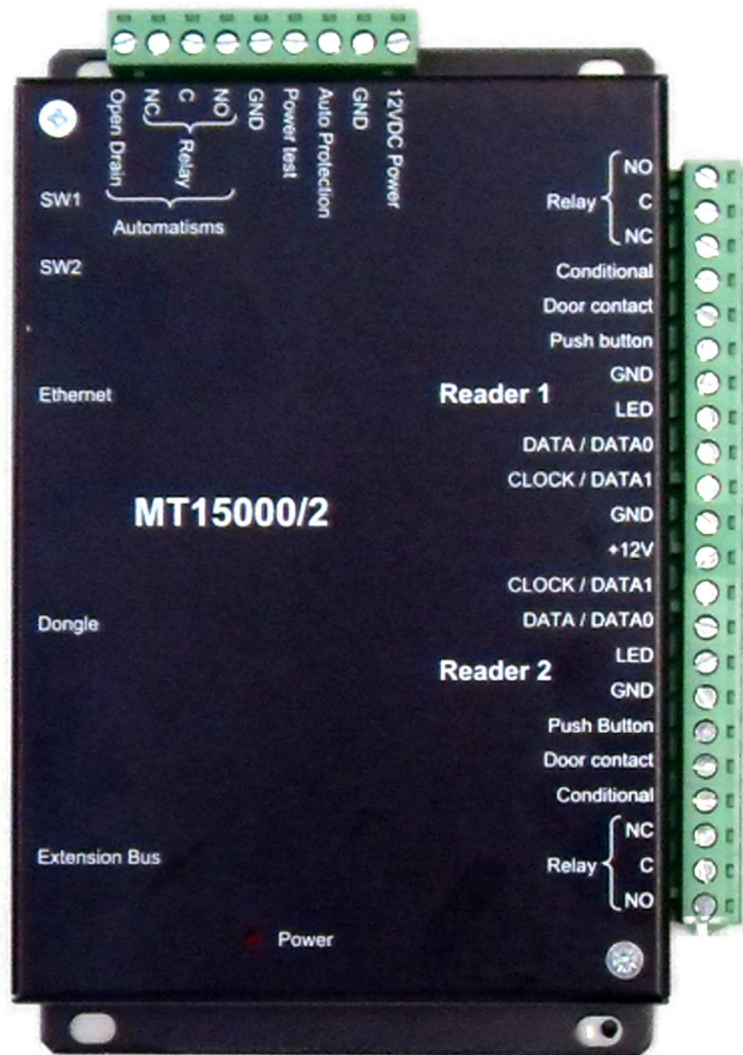
Dongle installation : **While power supply is turned off**, install the dongle proceeding as follows :



To check if system is running regularly, SWAMIGO3 indicates the version you are using at the bottom of the main window. The control unit must be connected so that the dongle can be identified.

If you haven't installed the right dongle according to your installation, control units will show in the devices status but no update and no events reports will be possible.

**TERMINAL BLOCK FEATURES**



**“RESET” BUTTONS USE****To rest the network parameters**

(back to factory parameters : IP address: 192.168.2.150, mask 255.255.255.0).

Cut off the power supply

Keep the switch pushed while turning on the power supply

Wait for the relays activation (approximately 20 seconds) while keeping the switch pushed

Release the switch

**To erase the control unit memory**

Cut off the power supply

Keep the switch pushed while turning on the power supply

Wait for the relays activation (approximately 20 seconds) while keeping the switch pushed

Release the switch