

07-0106-EN REAL TIME RECEIVER AND RW

INSTALLATION AND USE



GENERAL POINTS

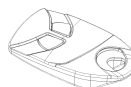
The Intratone **07-0106-EN** (EEN-REC4) receiver has two modes:

- **Real time:** connected to a control unit and/or GPRS/3G module.
- **RW**, Read/Write mode (USB programmer required).
- **Dip Switch is also available in parallel to these two modes.**

It can be managed from the Intratone management website: www.intratone.com in the “management website” tab.



Running from a 12/24V (AC/DC) power supply, this receiver **runs 2 relays** (2 NO contacts) and works with the **Intratone range's 868Mhz remote controls**.



⚠ Anti-Passback is not available with this model (see. EEN-REC2 or EEN-REC2-RW) ⚠

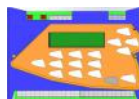
A) REAL TIME MODE

In real time mode, this receiver **MUST be registered** on the Intratone website using one of the solutions listed below:

- GPRS module
- 3G module
- Visio 2 panel.



Depending upon your needs, you may add an Intratone 03-0101-EN or 03-0102-EN control unit.



B) RW MODE (READ/WRITE)

This receiver, **in Read/Write mode**, *must be registered on the Intratone website with the serial number 7xxxxxx5 displayed on the device.*

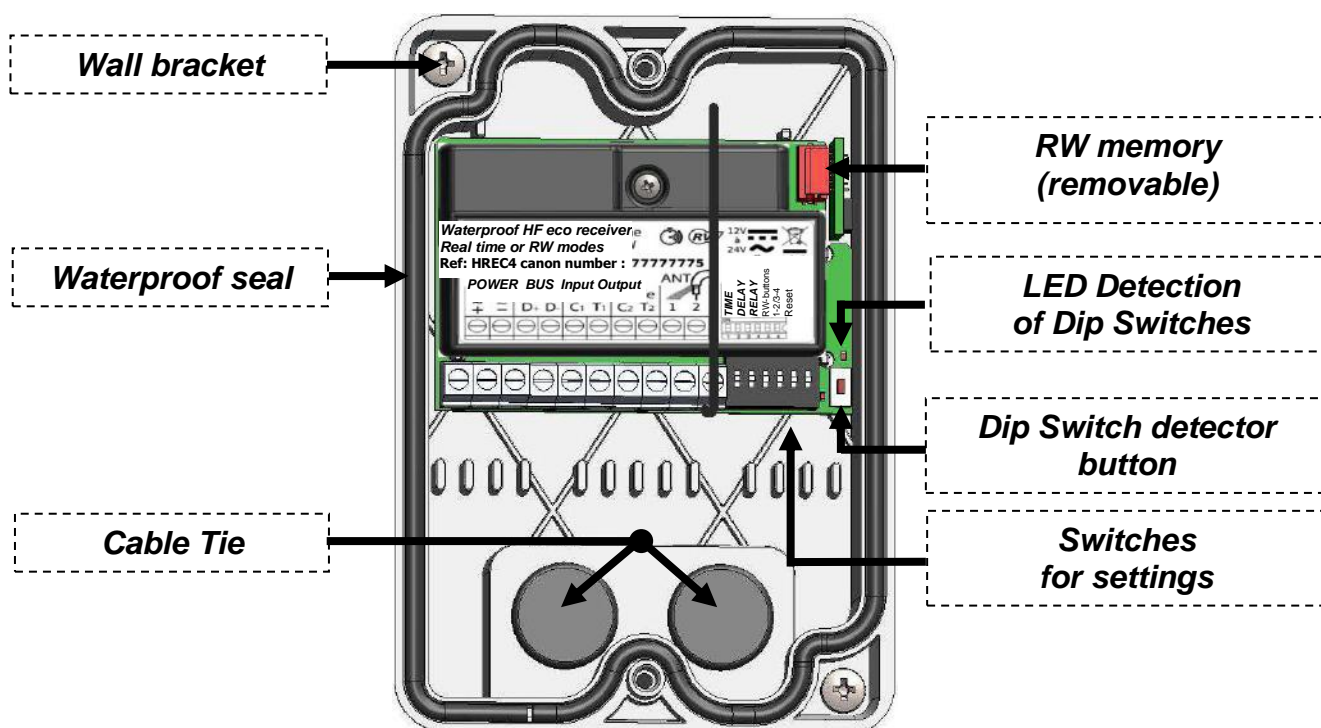
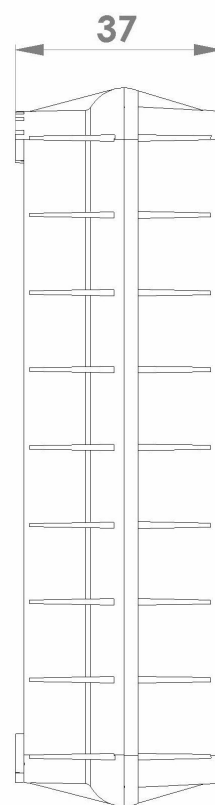
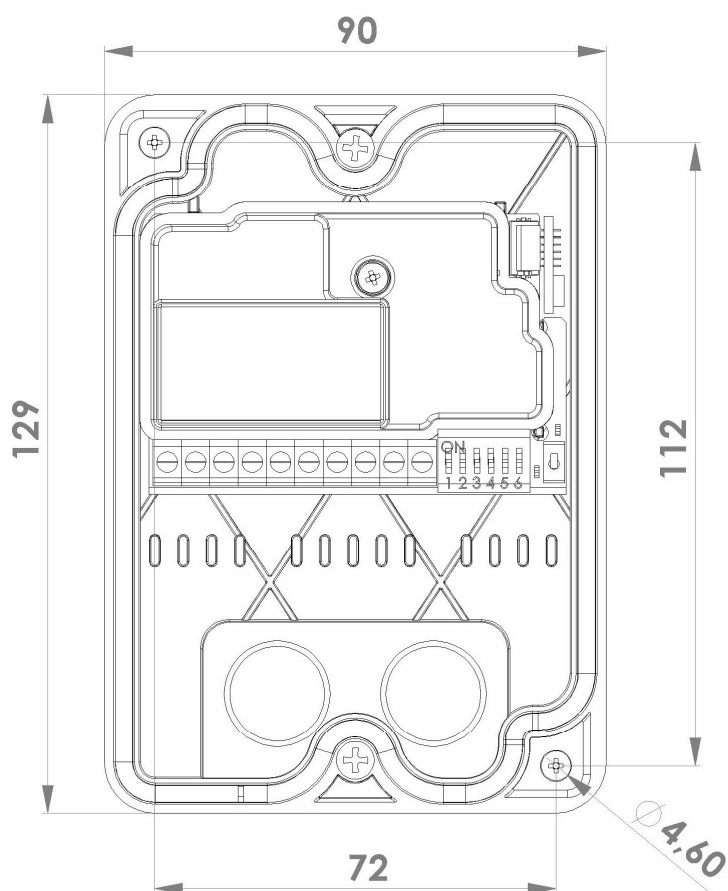
Only the remote controls programmed for the residence will open the doors. When using a “Key Pass”, the “Pass option” must be activated either with a special remote control or a “memory charger”.

To program the remote controls, you must use a USB programmer (12-0115-EN / EEN-PRO-USBHF)

TABLE OF CONTENTS

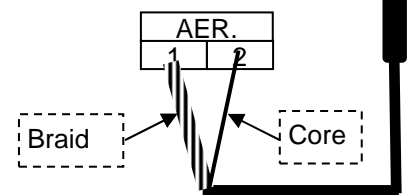
GENERAL POINTS	1
A) REAL TIME MODE	1
B) RW MODE (READ/WRITE)	1
TABLE OF CONTENTS	2
DIMENSIONS AND FITTING	3
WIRING	3
EQUIPMENT CONFIGURATION	4
A) LAUNCHING REAL TIME MODE	5
B) LAUNCHING RW (READ/WRITE) MODE	5
LED FEATURE	6
A) LED IN REAL TIME MODE	6
B) LED IN RW (READ/WRITE) MODE	6
SWITCHES	7
A) SWITCHES IN REAL TIME	7
B) SWITCHES IN RW MODE	7
C) SWITCHES 5 AND 6	7
DIP SWITCHES FEATURE	8
A) CONCEPT	8
B) HOW DOES IT WORK?	8
C) SAVING DIP SWITCH CODES	8
D) OPENING WITH DIP SWITCH CODES	8
E) RESET DIP SWITCH CODES (RAZ)	8
INSTALLATION PRECAUTIONS	9
ROLLING CODE OPERATION	9
STANDARDS:	10
A) EC STANDARDS	10
B) CABLING	10
C) END OF LIFE PRODUCT RECYCLING	10
CERTIFICATE OF CONFORMITY	11

DIMENSIONS AND FITTING



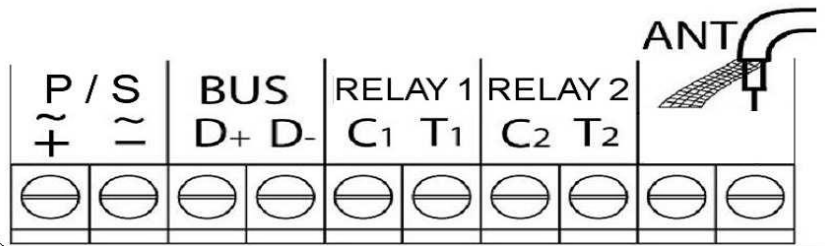
WIRING

With 868Mhz aerial
NOT SUPPLIED
(Optional assembly)

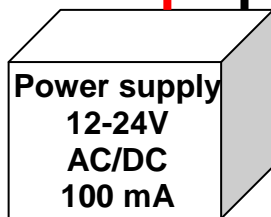


Réf : 07-0106-EN EEN-REC4

Serial number: 77777777



←----- With wire
(Assembled in factory)

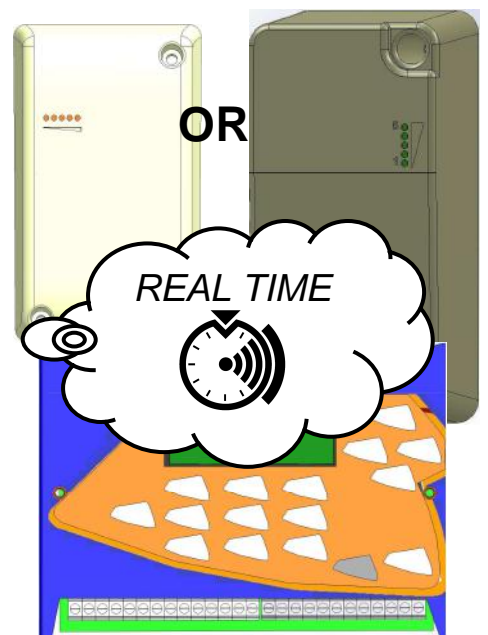


Dry contact to
Managed devices
2 Relays -1A with 24V
-5A with 12V



Real time cabling
Ø 0.8 – Max 200m

To D+/D-
of GPRS/3G module
and / or
of control unit
03-0101-EN (EEN-CEN12)
03-0102-EN (EEN-CIC12)



EQUIPMENT CONFIGURATION

A) LAUNCHING REAL TIME MODE

To launch the **07-0106-EN** (EEN-REC4) receiver in Real Time mode, you must program the remote controls online and update the device.

B) LAUNCHING RW (READ/WRITE) MODE

To launch the **07-0106-EN** (EEN-REC4) receiver in RW (Read/Write) mode, you must program the remote controls online:

- Have the device's serial number at hand.
- Log on to the website with your username and password or create an account ("create an account" button if logging on for the first time).
- Create a residence and then a "**07-0106-EN**" (EEN-REC4) access by entering the serial number for receiver **07-0106-EN** (EEN-REC4).
- You will then be able to program the remote controls that you will allocate to residents.
- The remote controls will automatically open the doors controlled by the receiver. The first control will launch the receiver.

If you need to make "Key Pass" controls, then you must activate the pass option by programming a special remote control on the website ("Activate Pass Option" button from the "control unit" menu on the receiver's screen).

Press a button on the "Pass Option" remote control in front of the receiver. The passes will then open.

LED FEATURE

Solid Light ↔ Real Time Flashes ↔ RW

☹: Check cabling Device not detected ☺: Cabling OK Device detected

STATE		MEANING
-------	--	---------

A) LED IN REAL TIME MODE

Flashing for 1 to 2 sec	☺	Power supply on After switch of switch 6: delete rolling code.
<u>Permanently ON</u>		<u>Normal operation in real time mode:</u> Diagnostic displays "HF" on 03-0101-EN control unit
Goes off for 1 second		HF transmission from 868Mhz Intratone remote control received properly.
Twinkling	☹	Error on data bus: Check D+/D- terminals
Permanently OFF		No power to receiver: Check +/- terminals

B) LED IN RW (READ/WRITE) MODE

Flashing for 1 to 2 sec	☺	Power supply on After switch of switch 6: delete rolling code.
<u>1 flash every 3 sec</u>		<u>New device in RW (Read/Write) mode:</u> A programmed remote control has not yet been used with the receiver. If switch 6 is set to ON (see page 7), all Intratone remote controls, programmed or not, are authorized.
<u>2 flashes every 3 seconds</u>		<u>Device operating in RW mode:</u> The receiver will work with remote controls programmed for residents on the website with a USB programmer. Access control is active: only authorized residents may enter with their remote controls. ⚠ "Pass Keys" do not work in this mode. ⚠
<u>Constant slow flashing</u>		<u>Pass option activated in RW mode:</u> (see section on device configuration).
Lighted for 1 second		Receiving an HF transmission from a remote control.
2-3 seconds quick flashes		Detecting a new remote control
10 seconds quick flashes		Receiver launching
Twinkling	☹	Memory invalid or missing
Permanently OFF		No power to receiver: Check +/- terminals

SWITCHES


→ Always position switch 6 to OFF ←

A) SWITCHES IN REAL TIME

Timing of relay openings “INPUT” and “OUTPUT”				Other switches	
S 1	S 2	S 3	Opening	Switch	Details
OFF	OFF	OFF	0.2 sec	S6	<u>SECURING ACCESS:</u> Always set to OFF. Note: Restarting has no effect on Real Time mode.
ON	OFF	OFF	01 sec		
OFF	ON	OFF	03 sec		
ON	ON	OFF	05 sec*		
OFF	OFF	ON	10 sec	S4	Not used in this mode!
ON	OFF	ON	15 sec		
OFF	ON	ON	30 sec		
ON	ON	ON	60 sec		

*05 sec or timing defined by control unit.

B) SWITCHES IN RW MODE

Timing of relay openings “INPUT” and “OUTPUT”				Which button should be used on the remote control?	
S 1	S 2	S 3	Opening	S 4	Using buttons
OFF	OFF	OFF	0.2 sec	OFF	 - I and II on 4 button remote controls. - Left and Right for 2 button remote controls
ON	OFF	OFF	01 sec		
OFF	ON	OFF	03 sec		
ON	ON	OFF	03 sec		
OFF	OFF	ON	10 sec	ON	- III and IIII on 4 button remote controls. - 2 button remote controls do not work in this mode
ON	OFF	ON	15 sec		
OFF	ON	ON	30 sec		
ON	ON	ON	60 sec		

C) SWITCHES 5 AND 6

Switch 5: Function that “authorizes the use of saved Dip Switches”

S5	ON	Activates Dip Switch opening.
S5	OFF	Prevents Dip Switch opening.

Switch no.6: RAZ and Secure Features

1) SECURING ACCESS: Always position switch 6 to OFF

2) Resetting the 07-0106-EN (EEN-REC 4) receiver in “read/write” mode:

Following a reset, all Intratone RW remote controls will be deleted from the memory.
Remember to set S6 to OFF → The receiver is reset to its factory settings.

To reset the receiver:

- Click switch 6 (the LED lights up) and wait until the LED begins to flash.
- Repeat this action twice until the LED flashes quickly.
- As soon as the LED flashes once every 3 seconds, the reset is complete and the **07-0106-EN** (EEN-REC4) receiver has been returned to factory settings and RW mode.
- **Turn the switch back to OFF.**

DIP SWITCHES FEATURE

A) **CONCEPT**

The Dip Switch function enables RW and Real Time modes to be opened independently. The receiver saves a Dip Switch code using the detection push-button. The remote control with the same Dip Switch code will now open the door.

Switch 5 in the ON position activates this feature.

The receiver can save up to **10 different Dip Switch codes**.

B) **HOW DOES IT WORK?**

The receiver recognises one of the Dip Switch codes on an Intratone remote control, and authorizes the entrance or exit to open.

Only Intratone remote controls **made later than 2014** and with the Intratone Dip Switch software/hardware installed can use this mode.

C) **SAVING DIP SWITCH CODES**

- 1) Press once on the “Dip Switch” detector button.
- 2) The LED above the button remains lighted. You have 10 seconds to press one of the buttons on a pre-programmed remote control with “Dip Switch”.
- 3) The remote has been saved when the LED begins to flash.
- 4) To exit detection mode: Press once on the push-button or wait for the LED to switch off.

D) **OPENING WITH DIP SWITCH CODES**

From then on, each remote control with a “Dip Switch” code saved by the receiver will be authorized to open doors.

Note:

This is true independent of RW or Real Time modes.

E) **RESET DIP SWITCH CODES (RAZ)**

- 1) Press and hold the “Dip Switch” detector button for 3 seconds.
⇒ 2) The LED above the button flashes quickly:
10 second waiting time to confirm RAZ.
- 2) Press PB once (before end of 10s wait)
⇒ RAZ confirmed and return to normal mode.
- 3) Following this, all “Dip Switch” codes are deleted. No remote control will operate in this mode.



It is impossible to cancel a specific remote or “Dip switch” code in → “Dip Switch” mode: it’s all or nothing!

INSTALLATION PRECAUTIONS



- ✓ The receiver **must not be enclosed in a metal case** or placed behind a protective area that uses metallic wire netting. In the event that you cannot do otherwise, you must connect the 868 MHz aerial that you will fit outside.
- ✓ To achieve satisfactory operation, there must be no metal obstacles between the active aerial and the normal position used for operating the remote controls. It is therefore preferable to **fit the receiver in a high location** to avoid obstacles (e.g. metallic wire netting).
- ✓ **Drill the holes as accurately as possible in the cable pass throughs** to prevent any water seeping into the receiver. Failure to comply with this requirement will void the warranty.
- ✓ **Never connect the relays' C1/T1 or C2/T2 terminals directly to a power supply.** These relays supply a voltage-free contact relay designed to be connected to a pushbutton-type input to the devices that need controlling. If these devices do not have an input of this kind, use an intermediate power relay of the correct capacity.

Notes:

If the range of the remote controls is too low (the 07-0106-EN receiver fails to detect a signal): position the aerial (NOT-PROVIDED) in different locations to find the best one (if possible in an open space away from metal structures so as to prevent interference).

ROLLING CODE OPERATION

The receiver manages the **rolling codes** emitted by the remote controls. They are intended to counter attempts at making fraudulent copies of remote controls (through reproducing the signal emitted by the remote control).

This means that a different code is transmitted each time a button is pressed, a code that must match the unique criteria of the 07-0106-EN receiver. The security of your site is thus optimal.

It may become necessary to delete **the rolling codes saved on the receiver** (If the receiver is moved to another site, for example). This is carried out when **the receiver is turned on, or when switch 6 is set to the ON position** (Put switch 6 back to OFF position).

STANDARDS:

A) EC STANDARDS

The HF 868Mhz 07-0106-EN (EEN-REC4) receiver **complies with the directive R&TTE 1999/5/EC: electrical safety standard EN 60950 (2000) applied, EMC standard EN 301 489-3 (2000) applied, radio standard EN 300 220-3 (2000) applied.**

B) CABLING

Please be sure to follow the recommendations given on the cabling and connection diagrams, especially concerning the distance and diameter of wiring between the HF receiver and the control unit of GSM/3G unit. **If this is not the case, no warranty will be given.**

C) END OF LIFE PRODUCT RECYCLING



The receiver and its accessories must not be disposed of with unsorted waste, but must be collected for recycling as Electrical and Electronic Waste.