


Ins-30130 LCD PROXIMITY reader kit

Technical Support

 01273 811011

Technical help is available:

 support@paxton.co.uk
 Monday - Friday from 07:00 - 19:00 (GMT)
 Saturday from 09:00 - 13:00 (GMT)

Documentation on all Paxton products can be found on our website - <http://www.paxton.co.uk/>

Bench test guide



What's in the box?

Documentation		
Part Number	Qty	Description
380-127	1	PROXIMITY LCD reader
380-592	1	Net2Air USB dongle

The current specification for compatible PC hardware, network and operating systems is available on our website at the following link: <http://paxton.info/720>

The following pages contain full instruction issued with the PROXIMITY LCD reader and the LCD reader image uploader.

These include the following procedures:

- Mounting the LCD reader.
- Commissioning.
- Default images.
- Creating and customising your own images.
- Installing the LCD reader image upload dongle.
- Downloading the LCD reader image upload software.

Technical Support

☎ 01273 811011

✉ support@paxton.co.uk

Technical help is available: Monday - Friday from 07:00 - 19:00 (GMT)
Saturday from 09:00 - 13:00 (GMT)

Documentation on all Paxton products can be found on our website - <http://www.paxton.co.uk/>

Suitability

Security-sensitive doors ✓

Wet environments ✓

Mounted on metal surface ✗

Readers mounted together **300 mm**
between readers

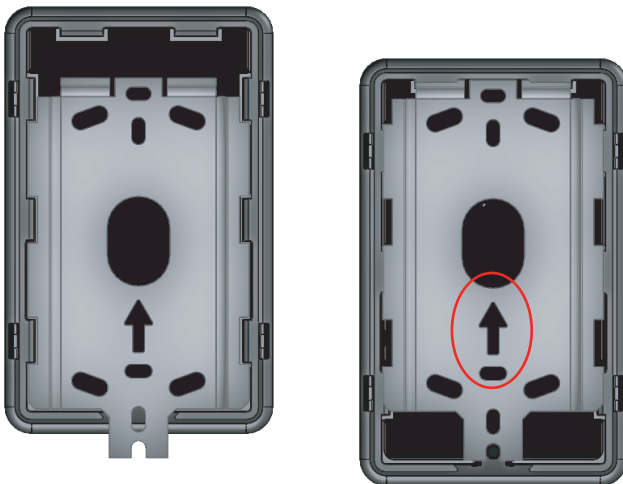
The full colour backlit LCD screen can be configured to display images of the customer's choice. For example, an image using a company name/logo could be used as the default display on each reader around the site.

The reader comes with four preloaded images. These can be replaced using a free uploader program available from our website via any Net2Air USB bridge or LCD reader image uploader.

If you wish to update these images, you should ensure that you have a suitable Net2Air device as one is NOT supplied with the reader.



Fitting



The LCD display is best positioned at eye level for ease of reading.

It is mounted using the backplate and fixings provided and can be positioned to allow the display of portrait or landscape images.

Fix the mounting plate to the wall, noting the position of the orientation arrow (see diagram).

Make a hole in the wall to take the reader cable and feed this through. Ensure there will be sufficient slack to allow the reader to slide over the mounting plate during installation.

Present the reader to the mounting plate so that the slots pass over the side tabs in the plate.

Slide the reader down the plate until the retaining pin clicks into position.

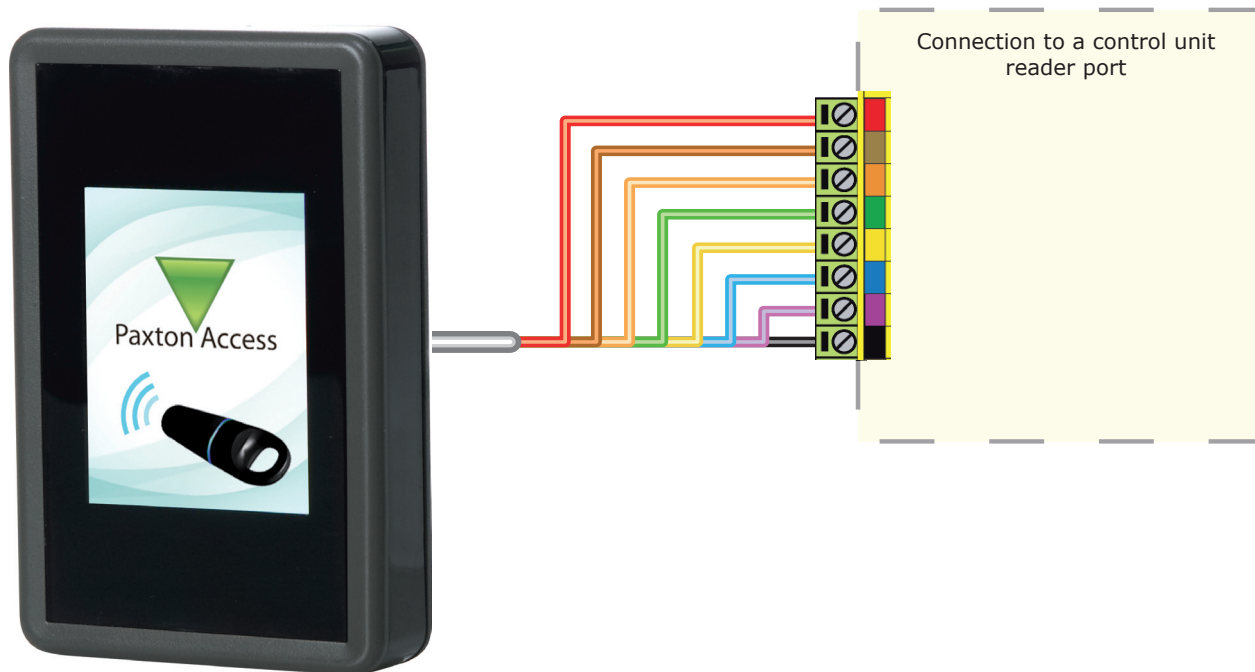
A tool is provided with the reader to depress this pin should the reader ever need to be removed.

Image display

The unit comes with four preloaded images. These relate to the 3 LED's (Green, Amber and Red) on a standard Paxton reader plus a default image.

Once a token has been read, the control unit establishes the access permissions of that user. Access is granted or denied as appropriate with the designated image displayed. For example, if access is denied the image assigned could show "Please return to Reception".

Wiring



Connection modules



Reader junction box (325-020)

This module can be used to provide a connection point for the reader RJ45 plug. The terminals on the module are then wired colour for colour to the controller.

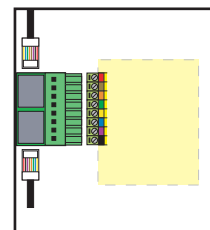
Alternatively, the reader can be wired directly into the screw terminals of the control unit by first cutting off the RJ45 plug and stripping back the wires in the cable.

Reader port module (325-030)

This module may be purchased separately to speed up the installation and replacement of readers.

The reader port module is designed to convert the standard reader ports on Switch2 and Net2 controllers to accept one or two RJ45 connections. Pull off the screw terminal block from the reader port and simply replace it with this module.

Further information on how to purchase Installer Tools is available at:
<http://paxton.info/841>



Cable extensions

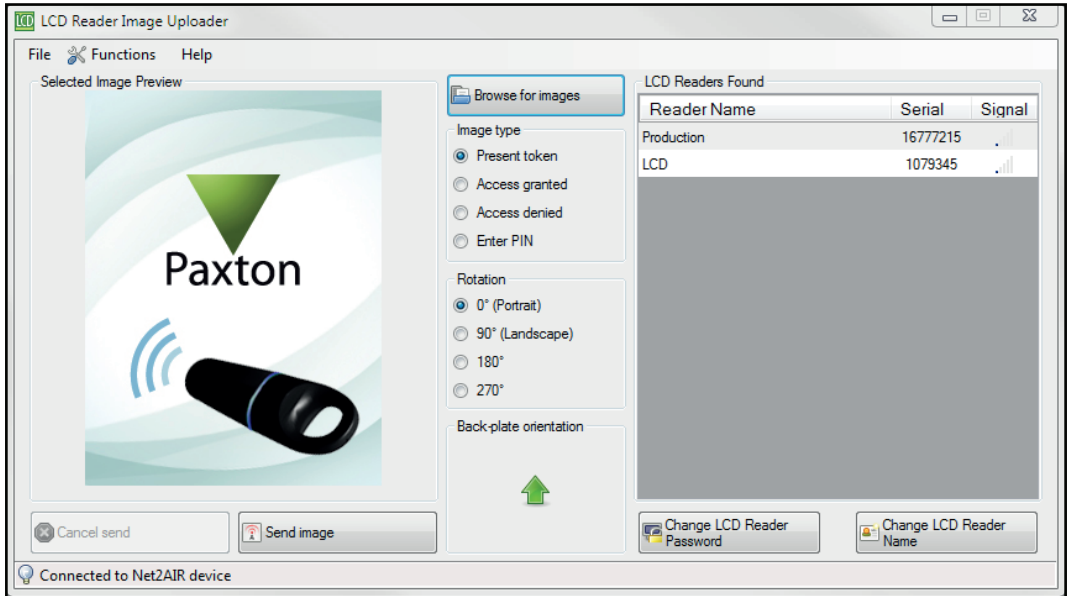
Readers can be extended using Belden CR9540 10-core overall screened cable to a maximum of 100 metres.

LCD reader image upload

The reader is supplied with four preload images. Images cannot be retrieved from the reader but they can be refreshed if the orientation is incorrect or replaced using the uploader program.

This program can be download from the website at < <http://paxton.info/1521> >

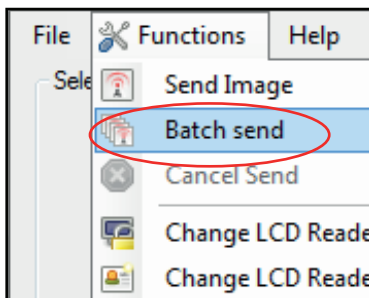
NOTE: This is an uploader utility and does not display the current image that is displayed on any particular reader.



Close down any other Net2 applications, including the Net2 server, to avoid any USB program conflicts. Run the LCD reader image uploader and it will detect the USB Net2Air device connected to the PC. The PC will then detect and display any LCD units that are in range of the USB device.

They are listed along with their Net2Air signal strength. Highlight the required reader and select one of the four image types. You can browse the PC for a new image or restore one of the defaults provided. (see Customised images)

Once the image is displayed, click on 'Send image' and this will be uploaded to the selected reader.



If more than one reader requires updating, a batch send function is available. Select the option in the functions menu and then select the readers to be updated. The selected image will be sent to each reader in turn.

Image orientation check

The metal backplate is marked with an arrow. Select a 'Rotation' option to turn the green arrow into the same direction as the backplate arrow.

This display is used to confirm that any image to be transmitted to the reader will match the orientation of the reader as installed. Rotating this display does NOT alter the actual image that will be sent.

In the example on the left, we have set the rotation to show a reader installed in a landscape orientation. This shows that the current image would display incorrectly if uploaded to the reader. (i.e. sideways)

The image should be corrected and viewed again before uploading to the unit.

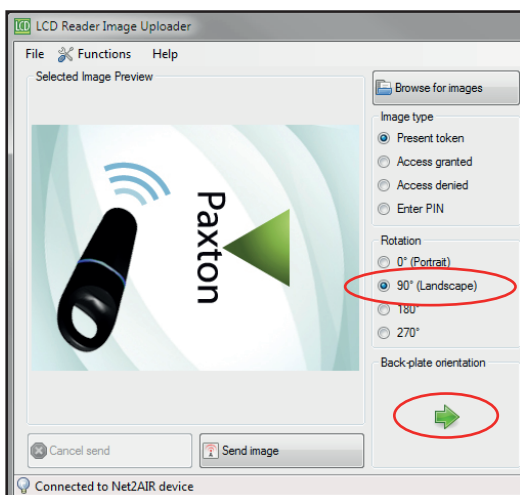
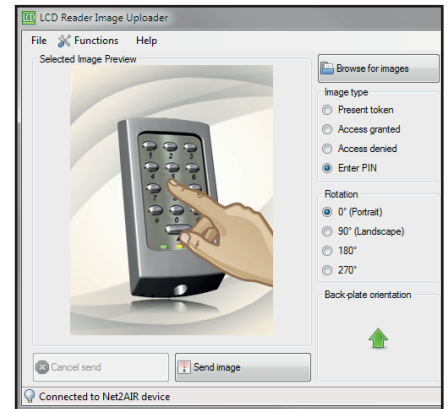
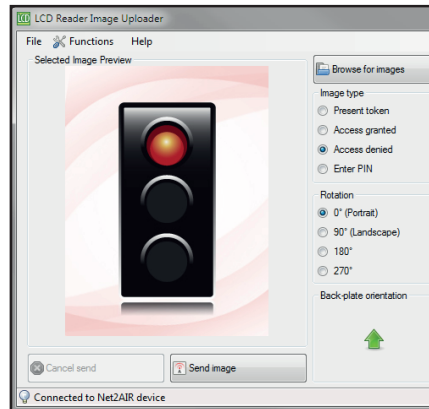
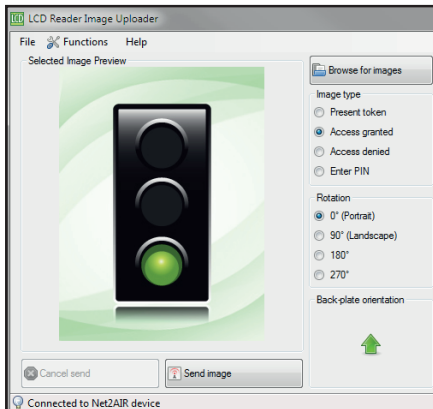


Image selection

The LCD reader will hold 4 images. These are selected automatically by the reader's LED control wires. The 'Present token' image will display unless one of the three LED wires (Brown, Amber or Green) is individually active (0v). In that case the corresponding image (Access Granted, Access Denied or Enter PIN) will display. The supplied images are shown below.



Changing the reader name

The name is stored within the reader. Select the reader, click the 'Change LCD reader name' button and you will then need to enter the password (if set). The reader name can then be changed.

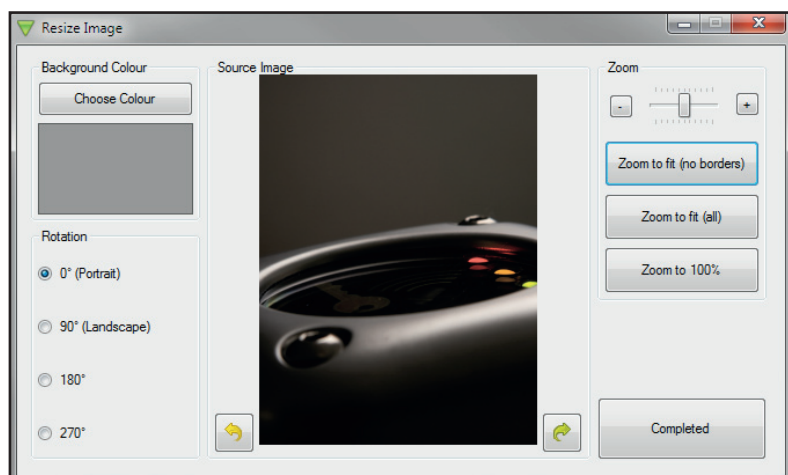
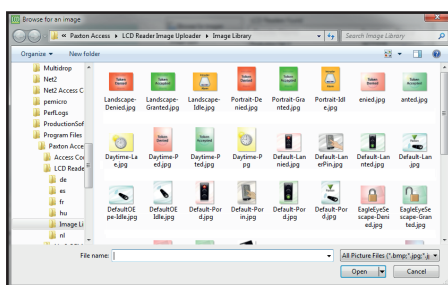
Changing the reader password

The password is stored within the reader itself. Select the unit, click the 'Change LCD reader password' button. You will be asked to enter the old password and the new password.

Customised Images

You can rotate or refresh any of the four images or produce your own customised versions.

From the main screen, click on 'Browse for images'. Select the required image and click 'Open'. The image will zoom to fill the display area.



The image can be further zoomed to any size using the controls and can also be dragged around the screen by clicking on the image and holding down the mouse button.

The display area should be rotated to match the reader orientation (See page 3). The image can also be rotated using the arrow buttons.

The other zoom functions work as follows.

- Zoom to fit (all) will ensure that the whole picture will display on screen by adopting a 'letter box' style. The background colour can be set as required.
- Zoom to 100% will display the image in a pixel to pixel relationship. This allows the image or logo to be displayed with perfect clarity when produced from commercial artwork.

Once you have the correct image displayed, click on 'Completed' to return to the main updater program.

The modified image can be saved via the 'File' menu.

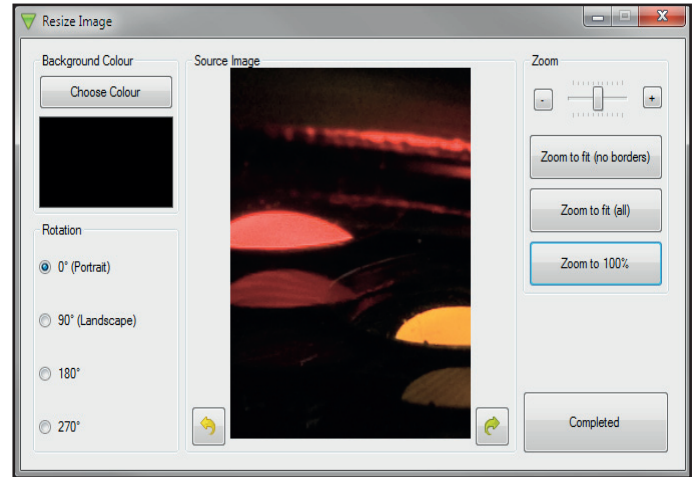
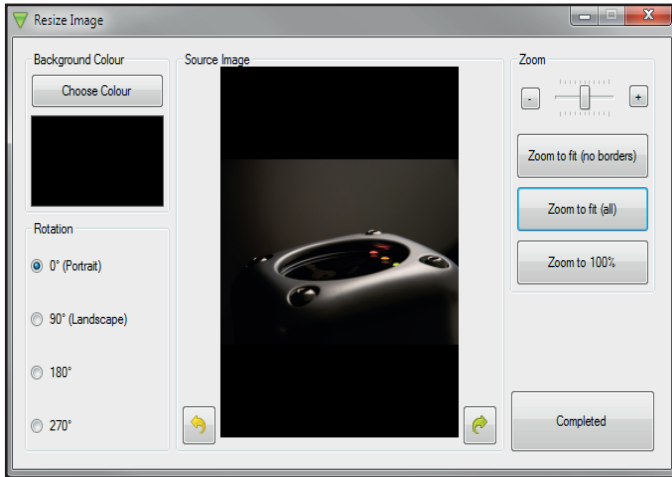


Image limitations

The following limitations apply:

LCD Portrait image: 240 x 320 pixels - minimum
LCD Landscape image: 320 x 240 pixels - minimum

Image format: .bmp, .jpg, .gif, .tif, .png, .dib, .rle
Import size: 2430 x 1822 pixels - maximum

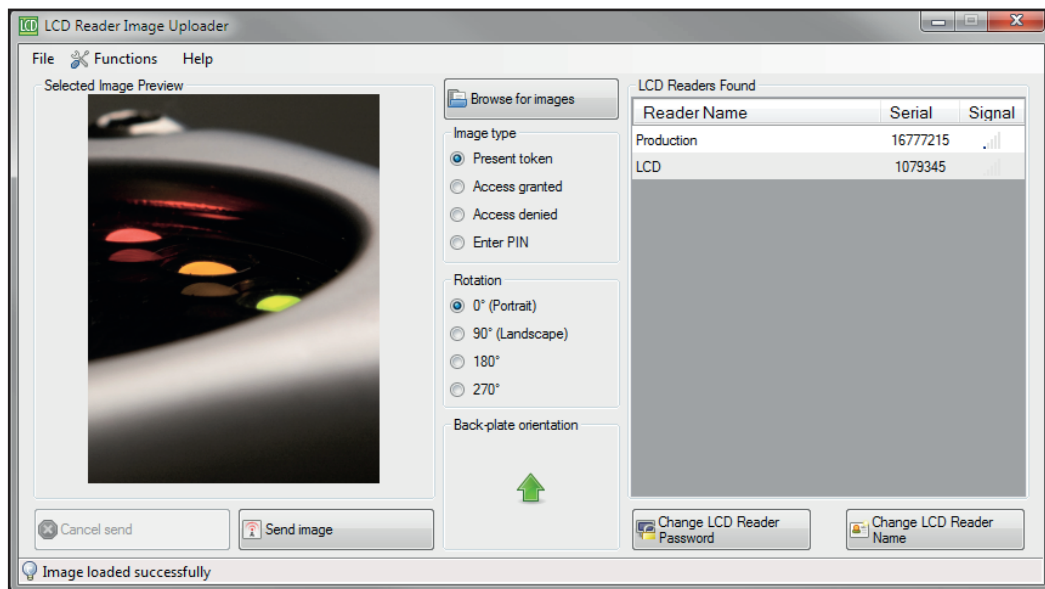


Image upload

Select the LCD reader from the list of units detected and check that the image type is the correct one to be updated.

Check that the image orientation is correct and then click on the 'Send Image' button.

This will bring up a password security screen. The reader password is left blank when supplied but one can be created if required.

The image will upload to the LCD reader in about 90 seconds and reports the progress on a status bar.

Factory reset

The reader can be reset to a factory default state by carrying out the following operation:-

1. Connect together the yellow and green wires. (reset link)
2. Connect power to the reader.
3. The reader will beep 3 times to confirm the reset sequence.
4. Remove the power and remove the reset link.

This factory reset sequence results in the LCD reader images returning to the default images, the LCD reader name will be cleared and the reader password will be blanked.

Specifications			
Environment	Min	Max	
Operating temperatures - all items	-20 °C	+55 °C	
Waterproof	IPX7		Outdoor use
Cable length			5 metres
Silent operation feature			Yes
Electrical	Min	Max	
DC supply voltage	10V DC	14V DC	
DC supply current	165 mA	215 mA	
Carrier frequency			125 kHz
Clock and data bit period			600 µs
Dimensions	Width	Height	Depth
	68 mm	109 mm	22 mm
Read Range	Token	Keyfob	Hands free token
	40 mm	30 mm	400 mm

Contents in box			
PROXIMITY LCD reader			
Reader mounting plate			
Documentation			
Option		Qty	Description
Fixing Kit - LCD reader	fk1-087	4	No 6 x 3/4 in pozi pan self tapping screw - zinc
		4	22 mm Wall Plugs
		5	Cable clips
		1	LCD reader removal tool

This product is not suitable for retail sale. All warranties are invalid if this product is not installed by a competent person.



The declaration of conformity is available on request. Contact details are provided at: <http://paxton.info/596>

Technical Support



01273 811011



support@paxton.co.uk

Technical help is available: Monday - Friday from 07:00 - 19:00 (GMT)
Saturday from 09:00 - 13:00 (GMT)

Documentation on all Paxton products can be found on our website - <http://www.paxton.co.uk/>

This USB dongle enables Paxton PC software to exchange data with Paxton devices that communicate using Net2Air wireless technology.

Plug the device into a spare USB port on the PC. Open or restart any Paxton applications and the dongle will register automatically in the software.

Net2 nano - The Net2 Server Configuration Utility/Net2Air Bridge tab will display a USB bridge with a fixed IP.

Proximity LCD reader - Close down any other Net2 applications including the Net2 server to avoid any program conflicts. Run the LCD reader image uploader software and it will display any LCD units that are in range of the dongle.

For further information, please refer to the following documentation as necessary.

Ins-30091 - Proximity LCD reader < <http://paxton.info/985> >

Ins-30084 - Net2Air USB bridge < <http://paxton.info/926> >

Download the latest version of Net2 software at: <http://paxton.info/1438> before commissioning this product.

Specifications			
System Specification	Min	Max	
ACU's per Net2Air bridge - Recommended	1	10	
Net2Air USB bridge per system		1	
Carrier frequency			2.405 GHz
Net2Air wireless range		5 m	
Electrical	Min	Max	
Voltage	4.75 V	5.25 V	USB certified
Current		100 mA	
Environment	Min	Max	
Operating temperature	0 °C	55 °C	
Waterproof			No
Dimensions	Width	Height	Length
	23 mm	14 mm	82 mm

This product is not suitable for retail sale. All warranties are invalid if this product is not installed by a competent person.

CE0889

The declaration of conformity is available on request. Contact details are provided at: <http://paxton.info/596>

Technical Support

 01273 811011



support@paxton.co.uk

Technical help is available: Monday - Friday from 07:00 - 19:00 (GMT)
Saturday from 09:00 - 13:00 (GMT)

Documentation on all Paxton products can be found on our website - <http://www.paxton.co.uk/>

LCD Reader image upload

To upload new images to your LCD reader, you will need a Net2Air USB bridge or LCD reader image uploader.

Download the free LCD reader image uploader software at:
<http://paxton.info/1521>



Sales code: 380-592
Description: Net2Air USB Dongle
<http://paxton.info/1523>

