

Technical Support

☎ 01273 811011

✉ support@paxton.co.uk

Technical help is available: Monday - Friday from 07:00 - 19:00 (GMT)
Saturday from 09:00 - 13:00 (GMT)

Documentation on all Paxton products can be found on our website - <http://www.paxton.co.uk/>

What data cable should be used?

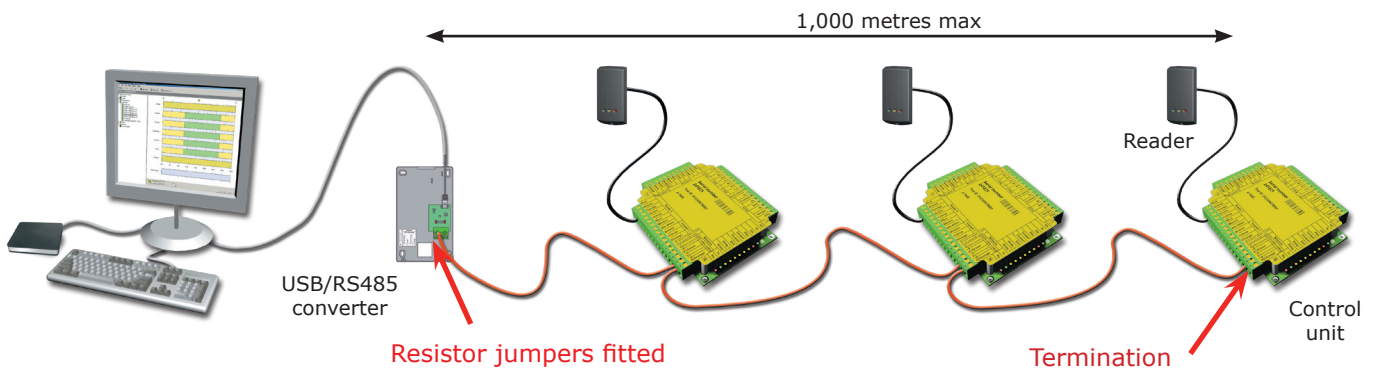
CAT5 or Belden 8723

This must be wired as a single daisy chain. The converter may be located anywhere along the line.

The ACU's will continue to operate in a 'standalone' mode if the PC is shut down or the data line is disconnected. Any Events that occur during this period are stored in the ACU and the PC is updated when it comes back online. The PC must be running for any 'active' functions to operate. (e.g. Fire Door release)

End of Line Termination

120 ohm resistors must be linked across each data pair at the beginning AND end of the data line. This can be done on many units with a switch or jumpers. If not, free resistors are provided with the converter. If the data converter is located at a point along the data line, termination will then be required in the two ACU's at each end of the line.



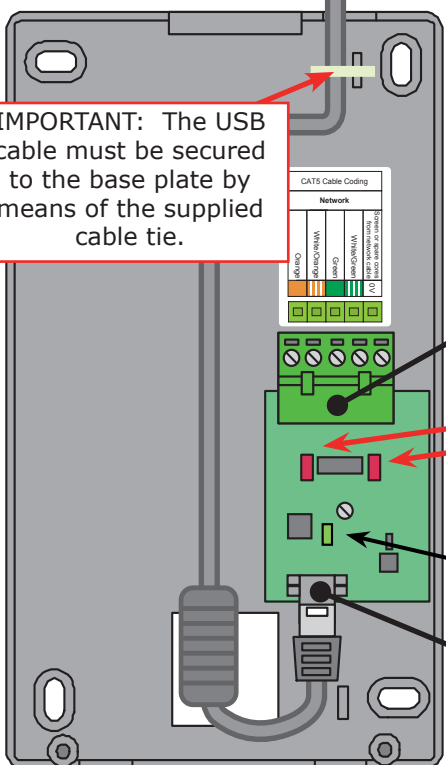
USB/RS485 converter (455-482)

Software - Requires Net2 v4.13 or later

This device requires the PC to have a Paxton USB driver loaded.
Please contact Technical Support if software or further assistance is required.

No further configuration is required. The Net2 software will look for the USB device. This Net2 device will NOT show as a serial port in the PC software.

IMPORTANT: The USB cable must be secured to the base plate by means of the supplied cable tie.



Wire the data line as per label. Screen and spare cores to 0V.

This unit has onboard resistors which can be put into circuit by putting the jumper across the 2 pins.

Net2 server activity LED

USB connection