





Ins-30022 - OEM Magstripe reader, controlled output

Suitability

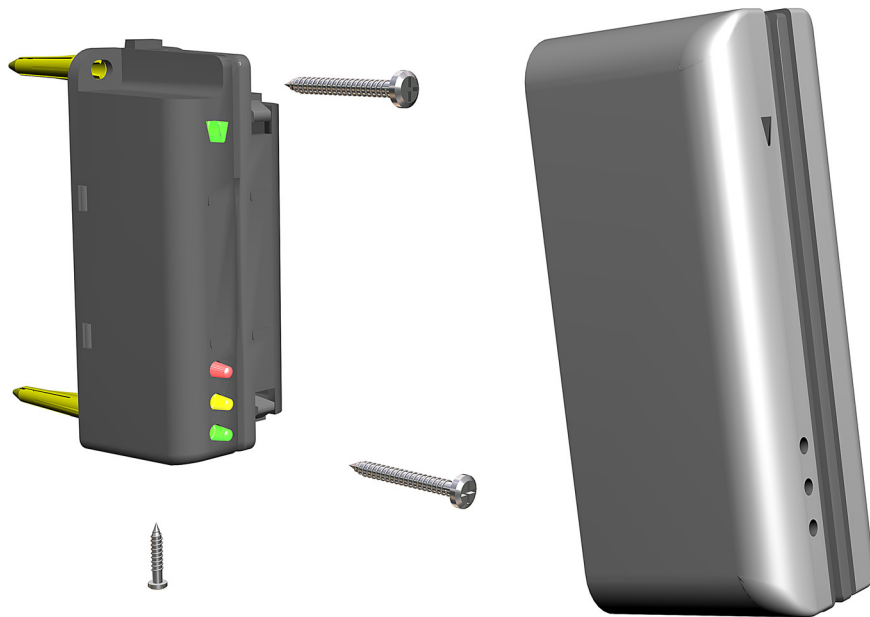
Wet environments 

Security-sensitive doors 

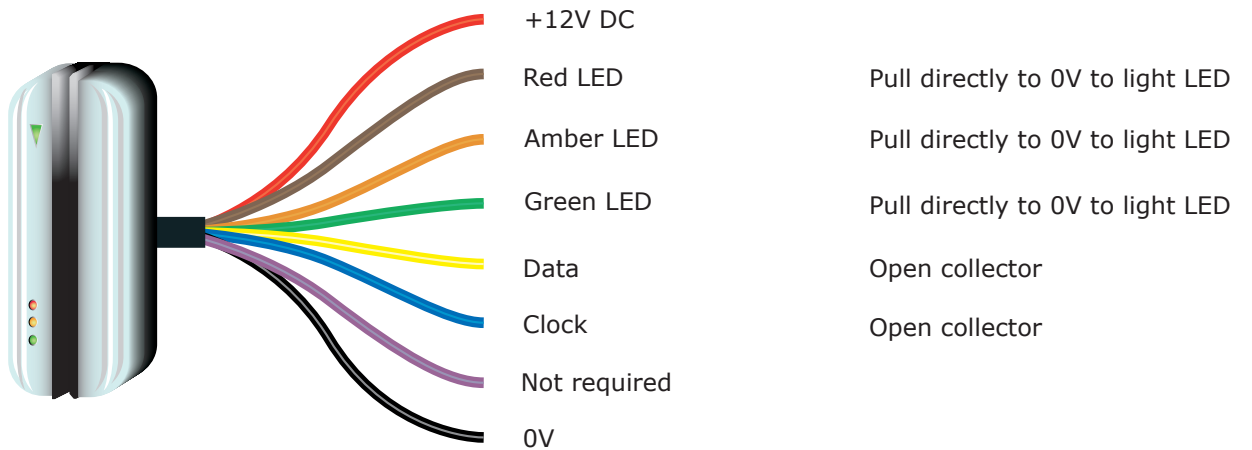
Mounted on metal surface 

Readers mounted together 

Fitting



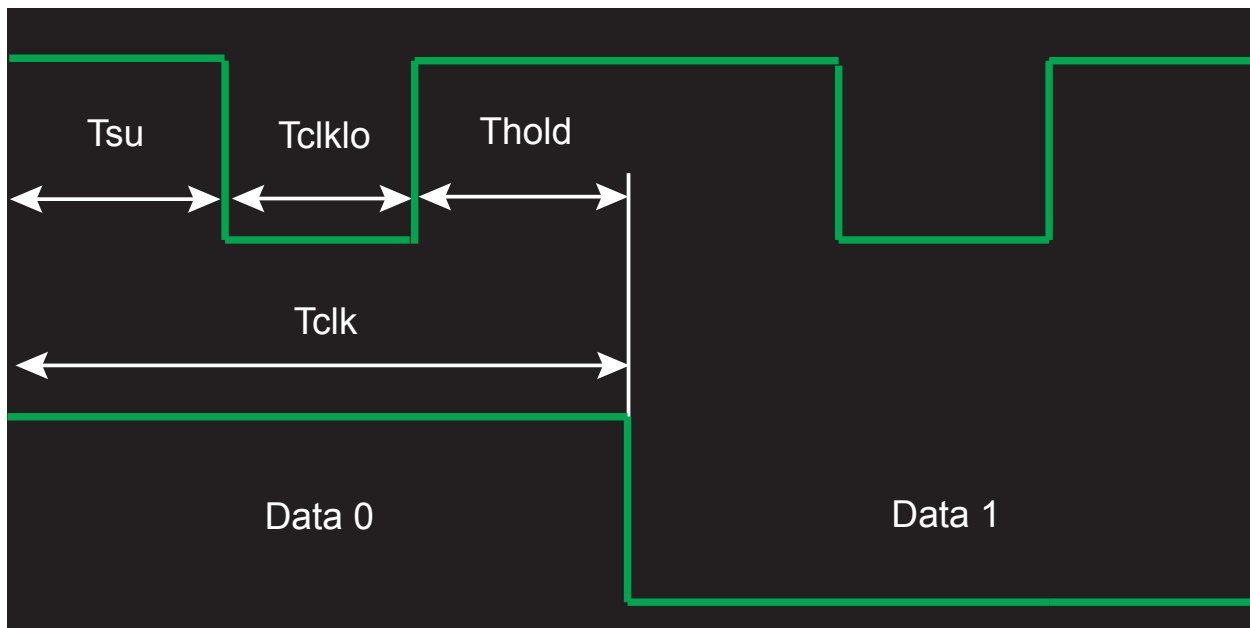
Wiring



Cable extensions

Readers can be extended using Belden CR9540 10-core overall screened cable to a maximum of 100 metres.

Output format



Data Period (Tclk)	600 μ s
Data Setup Time (Tsu)	200 μ s
Data Clock Low (Tclklo)	200 μ s
Data Hold Time (Thold)	200 μ s

Specifications

Environment	Min	Max	
Operating temperature	-20 °C	+55 °C	
Cable length			5 metres
IP Rating	IPX7		Outdoor use
Reader head life	1,000,000		Swipes
Electrical			
Voltage	8V DC	14V DC	
Current	90 mA	110 mA	
Clock and data bit period			600 μ s
Media speed	125 mm/s	1250 mm/s	
Media acceleration		500 mm/s ²	
Magnetic stripe coercivity	300 Oe	4000 Oe	
Dimensions	Width	Height	Depth
Reader	34mm	89mm	34mm