

## Ins-30018 OEM Magstripe reader, Wiegand 26 bit output

### Suitability

Wet environments



Security-sensitive doors



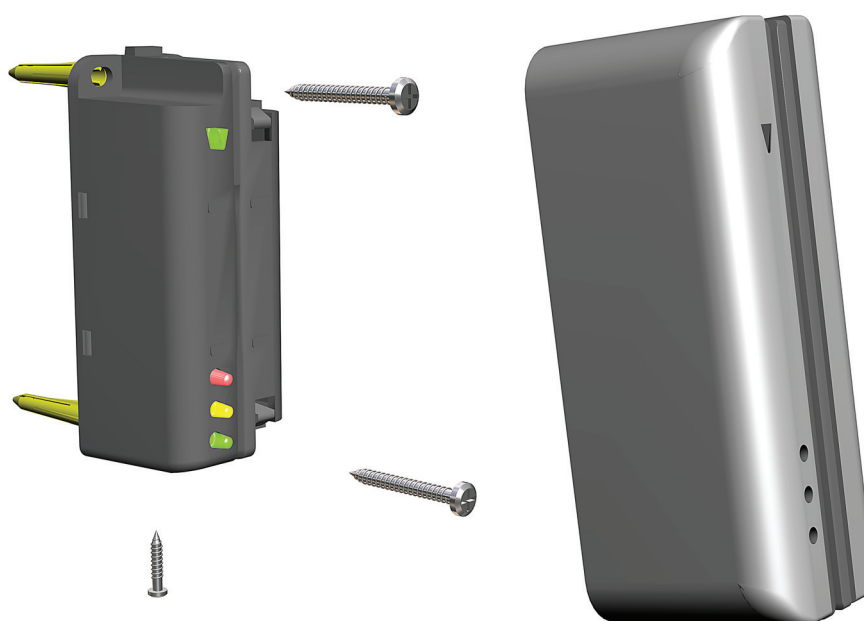
Mounted on metal surface



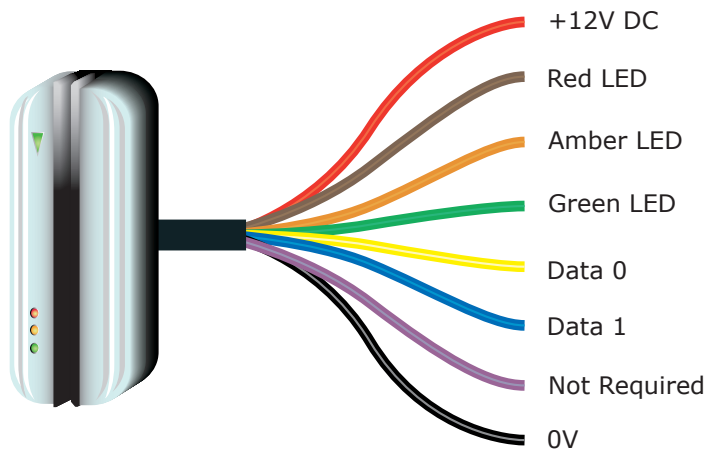
Readers mounted together



### Fitting



### Wiring



Readers can be extended using Belden CR9540 10-core overall screened cable to a maximum of 100 metres.

## Accepted token data formats.

### ABA standard cards

The data on ABA standard cards comprise a start sentinel followed by 16 digits, a field separator and some additional characters.

Only the 6 digits before the field separator (=) are used and are transmitted to the controller.

Example: SS 1234567898 765432 = 1478 5236 ES LR

The data (6 digits before =) is therefore 765432

The first 2 digits are then used as the site code and the remaining 4 digits become the user code.

Site Code: 76 01001100 (Binary)

User Code: 5432 0001010100111000 (Binary)

### The 26 Bit Wiegand standard is defined as follows;

PSSSSSSSUUUUUUUUUUUUUUUUUUP

P= Parity bit

S= Site Code

U= User Code

The first Parity bit is a 1 if it is required to make the total number of bits 1-13 an Even number.

The last Parity bit is a 1 if it is required to make the total number of bits 14-26 an Odd number.

Special cards may be used which comprise a start sentinel followed by 3 digits, a field separator, a further 5 digits and an end sentinel.

The 3 digits preceding the field separator (=) are taken as the site code and the 5 digits after the field separator are taken as user code.

Example: - SS 152=27854 ES

Site code : 152 = 10011000 (Binary)

User code: 27854 = 0110110011001110 (Binary)

Specifications			
	Min	Max	
<b>Environment</b>			
Operating temperature	-20 °C	+55 °C	
Cable length			5 metres
IP Rating	IPX7		Outdoor Use
Reader head life	1,000,000		Swipes
<b>Electrical</b>			
Voltage	8V DC	14V DC	
Current	90 mA	110 mA	
Wiegand format			26 bits
Media speed	125 mm/s	1250 mm/s	
Media acceleration		500 mm/s <sup>2</sup>	
Magnetic stripe coercivity	300 Oe	4000 Oe	
<b>Dimensions</b>			
	<b>Width</b>	<b>Height</b>	<b>Depth</b>
Reader	34mm	89mm	34mm

## Ins-30018 OEM Magstripe reader, Wiegand 26 bit output

### Suitability

Wet environments



Security-sensitive doors



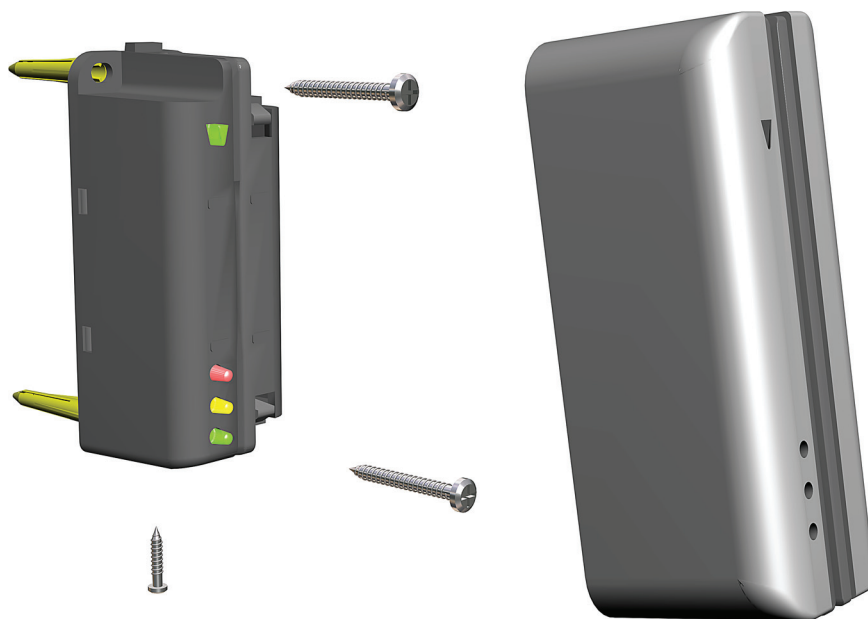
Mounted on metal surface



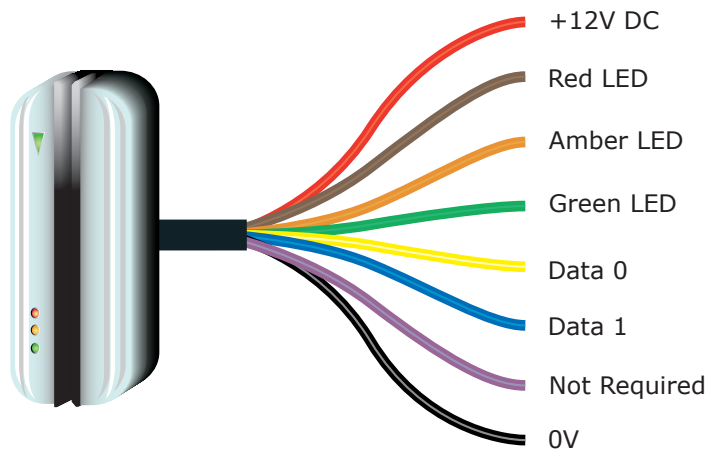
Readers mounted together



### Fitting



### Wiring



Readers can be extended using Belden CR9540 10-core overall screened cable to a maximum of 100 metres.

## Accepted token data formats.

### ABA standard cards

The data on ABA standard cards comprise a start sentinel followed by 16 digits, a field separator and some additional characters.

Only the 6 digits before the field separator (=) are used and are transmitted to the controller.

Example: SS 1234567898 765432 = 1478 5236 ES LR

The data (6 digits before =) is therefore 765432

The first 2 digits are then used as the site code and the remaining 4 digits become the user code.

Site Code: 76 01001100 (Binary)  
 User Code: 5432 0001010100111000 (Binary)

### The 26 Bit Wiegand standard is defined as follows;

PSSSSSSSUUUUUUUUUUUUUUUUUUP

P= Parity bit  
 S= Site Code  
 U= User Code

The first Parity bit is a 1 if it is required to make the total number of bits 1-13 an Even number.  
 The last Parity bit is a 1 if it is required to make the total number of bits 14-26 an Odd number.

Special cards may be used which comprise a start sentinel followed by 3 digits, a field separator, a further 5 digits and an end sentinel.

The 3 digits preceding the field separator (=) are taken as the site code and the 5 digits after the field separator are taken as user code.

Example: - SS 152=27854 ES

Site code : 152 = 10011000 (Binary)  
 User code: 27854 = 0110110011001110 (Binary)

Specifications			
	Min	Max	
<b>Environment</b>			
Operating temperature	-20 °C	+55 °C	
Cable length			5 metres
IP Rating	IPX7		Outdoor Use
Reader head life	1,000,000		Swipes
<b>Electrical</b>			
Voltage	8V DC	14V DC	
Current	90 mA	110 mA	
Wiegand format			26 bits
Media speed	125 mm/s	1250 mm/s	
Media acceleration		500 mm/s <sup>2</sup>	
Magnetic stripe coercivity	300 Oe	4000 Oe	
<b>Dimensions</b>			
	<b>Width</b>	<b>Height</b>	<b>Depth</b>
Reader	34mm	89mm	34mm