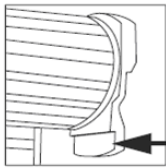


How to program a new TX4UNIS remote into an RDO800 series roller door opener.

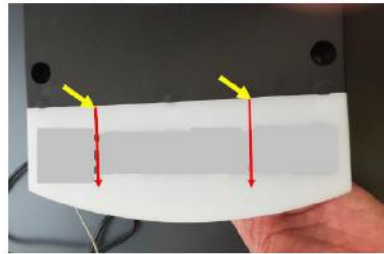


1. Remove the lens cover.

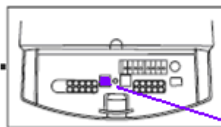


Remove the lens cover.

Step 1.  
To remove the light cover, use thumb pressure to push the light cover in towards the unit (yellow arrows) and then slide the cover downwards (red arrows).



2. Locate the purple "learn button".



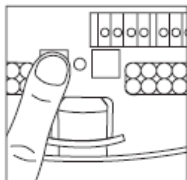
Purple learn button



3. Take the new TX4UNIS remote and slide the cover down to expose the four buttons. Press and hold the left and right hand buttons together and the white LED is flashing. Keep holding until the LED stays on constant and then let go. Now press the top button on the remote once and the LED flashes. Press the top button a second time and the LED flashes again. Now press the bottom button once and the LED goes out.



4. Now press & let go of the purple LEARN button, orange LED indicator light comes on.



5. Press & hold the button on the remote control, for 3 seconds, and the LEDs light will flash. Now let go of the remote control button, LED goes out, and the remote is ready to use.

To delete all remote control codes. Press & hold the purple button until the orange LED goes out, then let go. (Approximately 9 seconds).