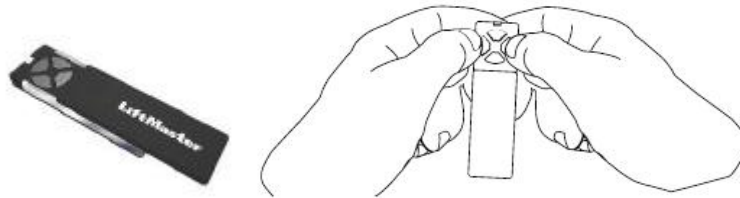


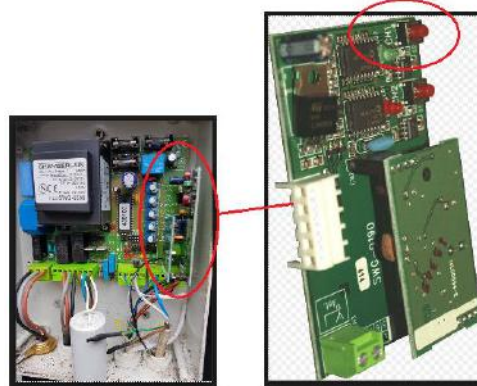
How to program a new TX4UNI remote into Chamberlain Liftmaster CB1 swing gate control board, which uses the 433 MHz radio frequency module.

1. Take the new TX4UNI remote and slide the cover down to expose the four buttons. Press and hold the left and right hand buttons together and the white LED is flashing. Keep holding until the LED stays on constant and then let go. Now press the top button on the remote once and the LED flashes. Press the top button a second time and the LED flashes again. Now press the bottom button once and the LED goes out.

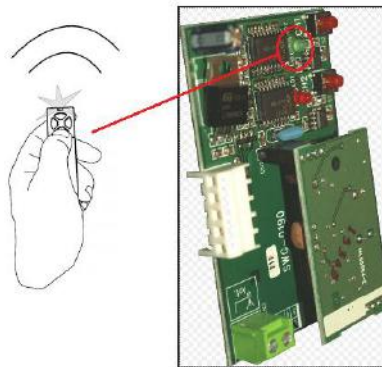


2. Locate the button CH1 on the CB1. Press the CH1 button once and the green LED comes on.

CH1 (with green LED) is for the remote fob to open and close 2 x gates.



3. Press & hold the top button on the remote, for 3 seconds, and the LEDs will flash. Now let go of the remote button, LEDs will go out and the remote is ready to use.



To delete all remote control codes. Press & hold the CH1 button until the green goes out, then let go.