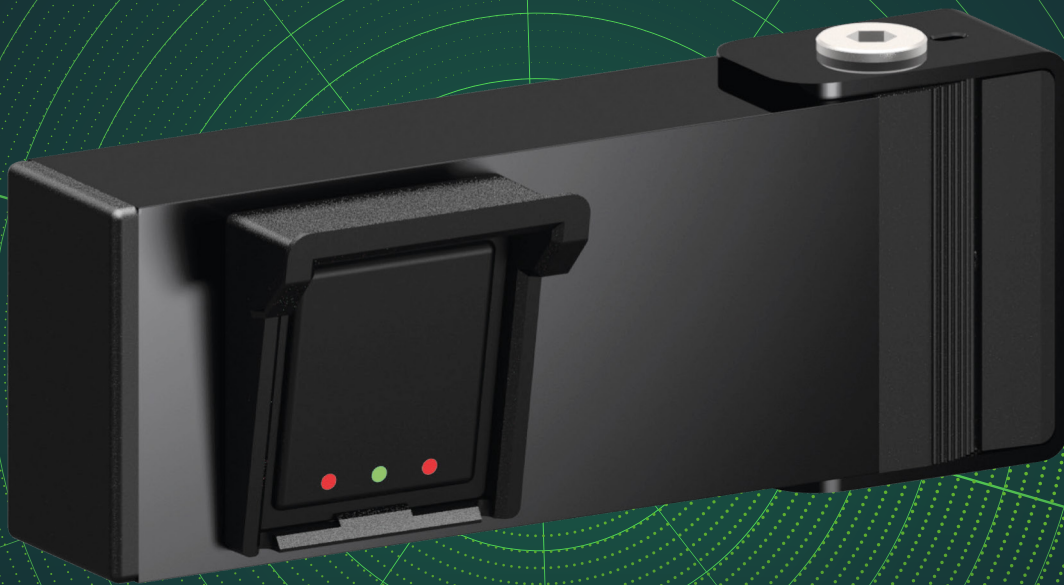


# LISENS<sup>®</sup>

*scan*

## **NEW SAFETY RADAR SYSTEM!**

**SAFETY ZONE & MULTIPLE VIRTUAL LOOP DETECTOR**



## **AUTOMATED DOORS, GATES, BARRIERS & MACHINERY**

# SAFETY RADAR SYSTEM



The **LISENS scan** product series is a safety device that is used for the contactless securing of barriers and gates. The product uses the latest FMCW<sup>†</sup> radar technology, which makes it possible to detect, categorise and safeguard both people and vehicles. Depending on the application, the system can map a safety zone and various warning zones.

A **LISENS scan** system consists of at least one sensor and an associated evaluation unit. It combines state-of-the-art technology with the highest functional safety standards of category 2, PL 'd'<sup>‡</sup>. Configuration can be carried out quickly and intuitively with any WLAN-capable device, without any app or internet connection. Thanks to the flexible switching outputs (8k2, FSS, potential-free relays and SSR), the system is compatible with any control system, meaning that retrofitting is also possible on existing barriers and gates. Up to 6 individually configurable sensors can be securely connected to an evaluation unit via a BUS cable to ensure the highest possible level of safety and to take local conditions into account in the best possible way. In addition to a safety zone, 2 additional warning zones can be set up for each sensor, so-called 'comfort zones'. These can, for example, also take on the function of virtual induction loops, making the costly installation of conventional induction loops redundant.

**LISENS scan** is the ideal solution for all applications where safety, flexibility and efficiency play a central role.

## INSENSITIVE TO ALL ENVIRONMENTAL INFLUENCES



**LISENS scan** is insensitive to **leaves, snow, rain, hail** and **fog**.

<sup>†</sup> Frequency Modulated Continuous Wave Radar  
measures both distance and velocity of moving objects

<sup>‡</sup> PL 'd' achievable using monitored output

# ***FLEXIBLE, UNIVERSAL, COMPACT.***



## **ZONE**

**LISENS scan** enables the precise division of the monitoring area into up to three configurable comfort zones, one of which is the safety zone. The size and position of each zone can be individually adjusted within defined parameters so that the detection area can be optimally adapted to the specific requirements of the location.

## **OBJECT DETECTION**

**LISENS scan's** object detection is highly precise and at the same time offers extensive customisation options. People and vehicles can be distinguished from each other and specifically classified, enabling a reaction depending on the type of object.

## **DIMENSIONS**

The individual sensor module is the size of a matchbox and can therefore be integrated almost 'invisibly' by the manufacturer, e.g. in a barrier housing. For retrofitting to existing installations, the robust mounting bracket of the LISENS scan can be adjusted horizontally and locked in place.

# LISENS scan FOR ENHANCED SAFETY

## SENSOR



IP protection class **IP67**

Sensor dimensions without holder  
**WxHxD 42 mm x 48 mm x 15 mm**

Sensor dimensions with holder  
**WxHxD 200 mm x 81 mm x 67 mm**

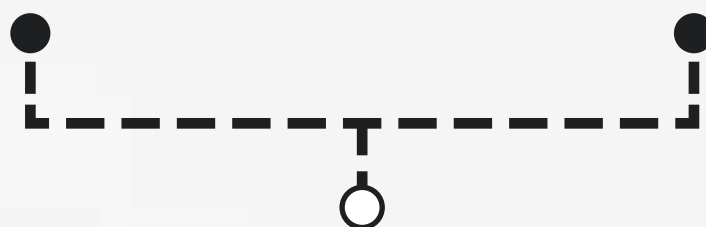
## CONTROLLER



IP protection class **IP20**

Dimensions  
**WxHxD 22.5 mm x 114 mm x 99 mm**

Supply voltage  
**DC 10-30v, AC 12-26v**



**safe *BUS* communication**

## SPECIFICATIONS & FEATURES

- Horizontal opening angle 120°
- Vertical opening angle 60°
- Detection distance 13 m
- Safety Category 2, PL 'd'†
- 3 x comfort output: SSR
- Safety outputs: potential free relays or 8k2 and FSS

† PL 'd' achievable using monitored output

- 60 GHz FMCW Radar
- Object classification and tracking
- Differentiation between static and dynamic objects
- Virtual induction loops
- WIFI configuration
- Type E device according to EN 12453‡

‡ Certification with notified body in progress



Unit 16, James Scott Road,  
Halesowen, West Midlands,  
**B63 2QT**

**Tel:** 01384 569 942  
[www.easygatesdirect.co.uk](http://www.easygatesdirect.co.uk)  
[info@easygatesdirect.co.uk](mailto:info@easygatesdirect.co.uk)