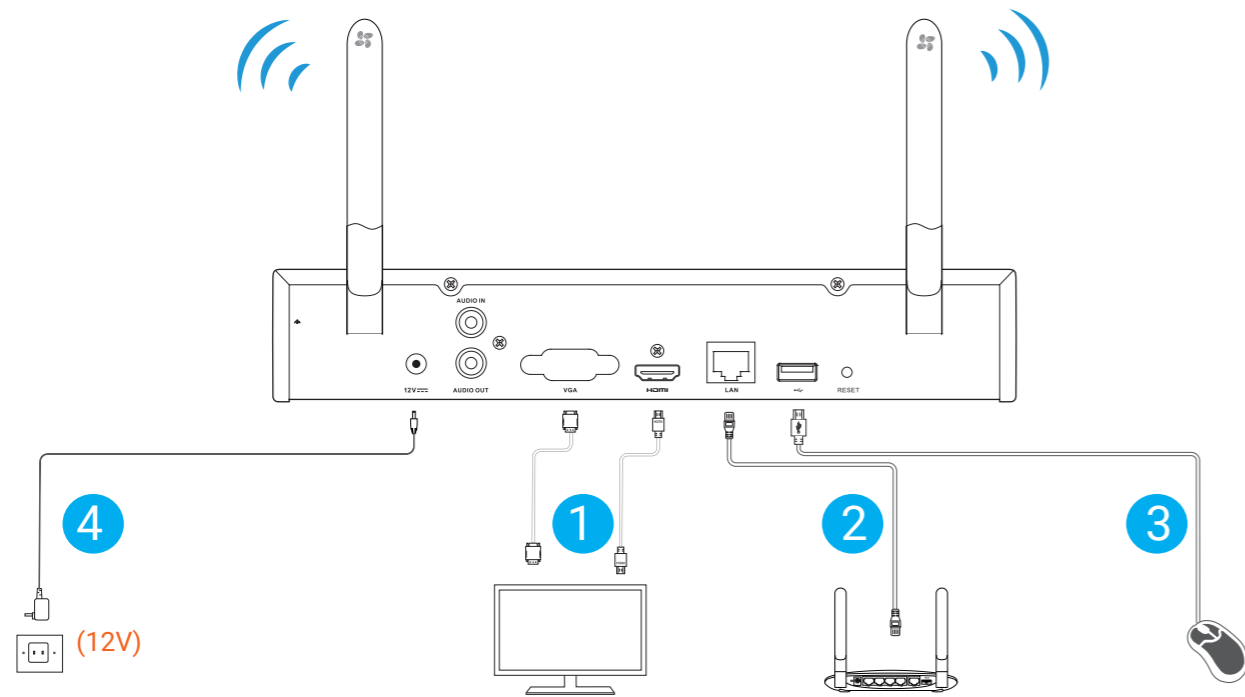


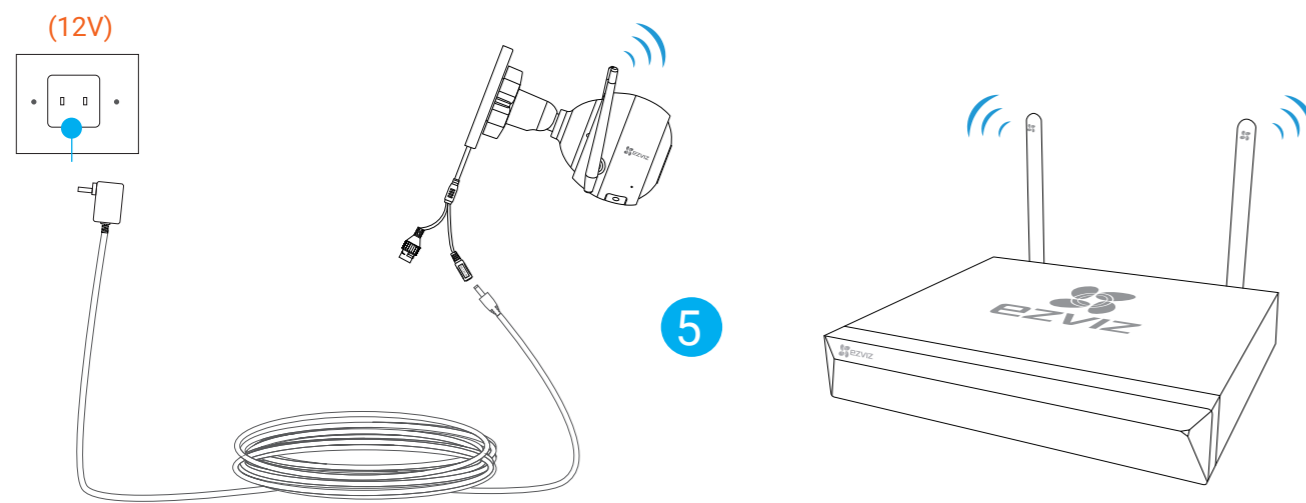


Quick Start Guide



1 Wiring

- 1 Connect the monitor to your NVR via the HDMI or VGA cable.
 - i The HDMI cable is included in the box while the VGA cable should be purchased separately.
- 2 **Optional** Connect the router to your NVR.
 - i If you want to access the video recording via your phone/pad/pc, please follow this step.
- 3 Connect the mouse to your NVR.



2 Setup

- 4 Connect the power outlet to your NVR.
 - 1 Power on the NVR.
 - 2 [For First Time Access] When the Wizard interface appears on the monitor, set the password.
 - 3 Log in the NVR.

3 Linkage

- 5 Connect the camera(s) to your NVR.
 - i [For First Time Access] The cameras can be linked to the NVR automatically once they are all powered on.
 - i Once pressing the RESET button in the camera, you should search the camera via the monitor and link it manually.

Download

Register

Add NVR

4 APP

- 6 **Optional**
 - i Make sure you have connected the router to your NVR. Add your NVR to EZVIZ APP.
 - 1 Get and install EZVIZ app by searching "EZVIZ" in App Store™ or Google Play™.
 - 2 Launch the app and register an EZVIZ account.
 - 3 Add NVR to your account by scanning the QR code on the bottom of the NVR.

Contact Us
www.ezvizlife.com
 Email: service@ezvizlife.com
support@ezvizlife.com