

Lighting Indoor RTS



Operating and installation guide

Ref.5054480A

Contents

1. Brief overview of the Lighting Indoor RTS	3
2. Safety - Important information	3
2.1 Installation and commissioning	3
2.2 Operating	4
2.3 Environment	4
3. Content of the kit and tools required	4
3.1 List of parts	4
3.2 Tools required	4
4. The Lighting Indoor RTS in detail	5
4.1 Components	5
4.2 Technical data	5
5. Mounting the Lighting Indoor RTS	6
5.1 Before mounting the Lighting Indoor RTS	6
5.2 Recessed mounting	6
5.3 Mounting and assembly on a surface	8
6. Programming the control point	9
6.1 Accessing the Lighting Indoor RTS PROG button	10
6.2 Identifying the control point	10
6.3 One-touch point	10
6.4 Point with Up/STOP/Down buttons	14
6.5 Timer	16
6.6 Situo control point	18
6.7 Telis 1 RTS/Telis Soliris RTS remote controls	19
6.8 Telis 4 RTS/Telis 4 Soliris RTS remote controls	21
7. Replacing a lost or broken control point	22
8. Everyday use of the Lighting Indoor RTS	22
8.1 Operating	22
8.2 Maintenance	23
9. Problems with the Lighting Indoor RTS?	24
10. Changing the fuse	25

Somfy's expertise delivers satisfaction guaranteed.

Thank you for choosing a Somfy Lighting Indoor RTS.

Before installing and using the Lighting Indoor RTS, please read this guide carefully.

Somfy solutions animate your lights and entrances to bring your whole house alive. Somfy solutions are designed so that everyone can enjoy the benefits of the products in their home, based on their specific requirements.

In this guide, the term 'product' can include your awning, blind, curtain, garage door, gate, projection screen, roller shutter.

Well thought-out and easy to use, Somfy solutions are one of life's little daily pleasures, making home life more enjoyable.

1. Brief overview of the Lighting Indoor RTS

The Lighting Indoor RTS is used to control one or more incandescent or halogen bulbs from a single control point equipped with Radio Technology Somfy (RTS).

The Lighting Indoor RTS is fitted in place of the original switch. The RTS control point to which it is connected becomes the new switch for controlling lighting in the room. The Lighting Indoor RTS cannot be used to control neon lighting, a 24 V bulb supplied by a transformer, or a bulb with a dimmer switch.

The maximum power of all the bulbs connected to a Lighting Indoor RTS is 500 W.

The Lighting Indoor RTS is used as:

- an individual control, with one Lighting Indoor RTS controlling one or more bulbs up to 500W combined power;
- a group control - several Lighting Indoor RTS are controlled from a single control point (advanced installation function), or;
- a multiple control - one Lighting Indoor RTS is controlled by several control points (up to a maximum of 12) (advanced installation function).

2. Safety - Important information

2.1 Installation and commissioning

Read this guide carefully before installing and using the Lighting Indoor RTS.

This guide describes the installation, commissioning and use of the Lighting Indoor RTS.

Before beginning installation, make sure that the Lighting Indoor RTS is compatible with the equipment and associated accessories.

Any incorrect use will invalidate the warranty and Somfy's liability.

2.2 Operating

Always make sure the power supply is off before beginning any installation, mounting, disassembly or maintenance operations on the Lighting Indoor RTS and associated bulbs.

- Do not allow children to play with the fixed control points. Keep remote controls out of the reach of children.
- Never immerse or soak the Lighting Indoor RTS in any liquid.
- Only use maintenance products recommended by Somfy.

2.3 Environment

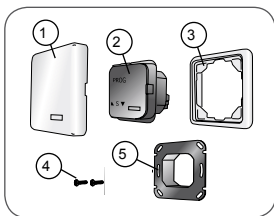
Damaged electrical or electronic products, such as used batteries, should not be disposed of with household waste. Please take them to a collection point or an approved centre to ensure they are recycled correctly.

3. Content of the kit and tools required

3.1 List of parts

- Before beginning installation and commissioning of the Lighting Indoor RTS, check that all parts listed in the following table are present in the correct quantity (Q):

No.	Components	Q.
1	Cover	1
2	Lighting Indoor RTS	1
3	Frame	1
4	Screw	2
5	Bracket	1



To install the Lighting Indoor RTS on a surface, use only the Somfy housing for surface mounting designed for the Lighting Indoor RTS (not supplied).

Caution: The frame (3) can only be used for recessed mounting.

3.2 Tools required

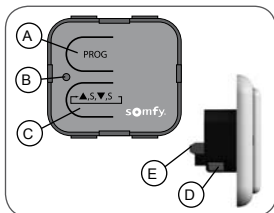
- Appropriate screwdriver for the screws to be used
- Insulated flathead electricians screwdriver
- Drill and drill bit
- Pencil



4. The Lighting Indoor RTS in detail

4.1 Components

- A. Programming button (PROG)
- B. Indicator light
- C. Manual On/Off control button
- D. Fuse
- E. Electrical connection terminal.



4.2 Technical data

Dimensions in mm (H x w x d): 80 x 80 x 45 mm

Operating temperature: + 5°C to + 40°C

Protection rating: Inside use, in a dry room - IP 30

Frequency: 433.42 MHz

Range: 20 m through two concrete walls; 200 m in open space

Power supply: 230 V; 50 Hz

Fuse: 3.15 A

Power: 500 W max.

5. Mounting the Lighting Indoor RTS

5.1 Before mounting the Lighting Indoor RTS

5.1.1 Distances

- 150cm = Minimum distance to be kept between a Lighting Indoor RTS and the ground.
- 30cm = Minimum distance to be kept between a Lighting Indoor RTS and another RTS component: (e.g. between any RTS control points and/or between any control point and any motor).
- 20cm = Minimum distance to be kept between two Lighting Indoor RTS: (e.g. between any RTS control points and/or between any control point and any motor).

5.1.2 Conditions

Note: Do not mount the Lighting Indoor RTS on a metal surface.

- The Lighting Indoor RTS must only be installed indoors.
- Mount the Lighting Indoor RTS in a housing for recessed mounting which is 60 mm in diameter (minimum depth: 40 mm) or in a Somfy housing for surface mounting (not supplied).

Caution! To install the Lighting Indoor RTS on the surface of a wall, only use the Somfy housing for surface mounting which is compatible with the Lighting Indoor RTS (not supplied).

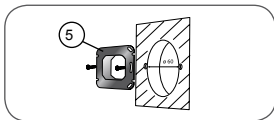
- Always leave the front panel of the Lighting Indoor RTS clearly accessible; never place anything in front.
- Check the radio range after mounting the Lighting Indoor RTS. The radio range is limited by the radio appliance control standards.

5.2 Recessed mounting

Somfy recommends fitting the Lighting Indoor RTS in place of the original switch.

- Check that the bulbs work.
- Cut off the mains power supply.
- Remove the original switch to access the housing for recessed mounting.
- Screw the mounting bracket (5) onto the housing using the screws supplied.

Note: If the screws provided are lost, do not use roundhead screws. Only use



flathead screws with a diameter of 3 mm.

- Place the Lighting Indoor RTS (2) inside the frame (3).
- Wire the Lighting Indoor RTS according to the diagram opposite:

- (a) / (b) = Output
- (L) = Live
- (N) = Neutral

- Ensure that no pressure is exerted on the wires from the Lighting Indoor RTS terminal.

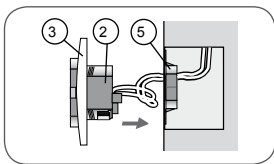
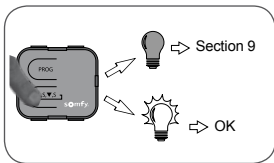
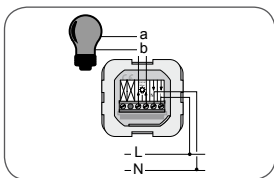
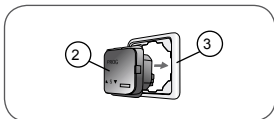
- Check the Lighting Indoor RTS wiring:
 - Press the Lighting Indoor RTS manual control button.

- ▶ If the bulb connected to the Lighting Indoor RTS does not light up, see section 9 "Problems with the Lighting Indoor RTS?".
- ▶ If the bulb connected to the Lighting Indoor RTS lights up, the Lighting Indoor RTS is correctly wired.

- Insert the Lighting Indoor RTS assembly (2) and the frame (3) into the bracket (5):

- Position the assembly so that "PROG" can be read.
- Press the Lighting Indoor RTS until a click is heard: the Lighting Indoor RTS is correctly fitted into the bracket.
- Ensure that the wires are not squashed by the Lighting Indoor RTS terminal when pushing into the recess fitting.

- Follow the steps described in section 6 "Programming the control point" before fitting the cover.



5.3 Mounting and assembly on a surface

Somfy recommends fitting the Lighting Indoor RTS in place of the original switch.

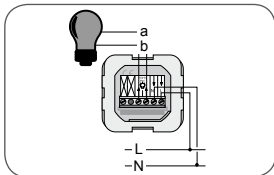
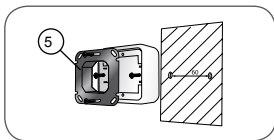
To install the Lighting Indoor RTS on a surface, only use the Somfy housing for surface mounting which is compatible with Lighting Indoor RTS (not supplied).

Caution: The frame (3) is not used for surface mounting.

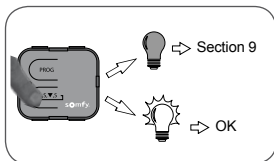
- Check that the bulbs work.
- Cut off the mains power supply.
- Remove the original switch to access the housing for recessed mounting.
- Mount the Somfy housing for surface mounting to the wall.
- Screw the bracket (5) onto the surface mounting housing using the screws supplied.

Note: If the screws provided are lost, do not use roundhead screws. Only use flathead screws with a diameter of 3 mm.

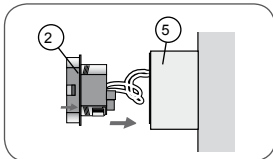
- Wire the Lighting Indoor RTS according to the diagram opposite:
 - (a) / (b) = Output
 - (L) = Live
 - (N) = Neutral
- Ensure that no pressure is exerted on the wires from the Lighting Indoor RTS terminal.



- Check the Lighting Indoor RTS wiring:
 - Press the Lighting Indoor RTS manual control button.
 - ▶ If the bulb connected to the Lighting Indoor RTS does not light up, see section 9 "Problems with the Lighting Indoor RTS?".
 - ▶ If the bulb connected to the Lighting Indoor RTS lights up, the Lighting Indoor RTS is correctly wired.
- Insert the Lighting Indoor RTS (2) into the bracket (5).



- Position the Lighting Indoor RTS so that "PROG" can be read.
- Press the Lighting Indoor RTS until a click is heard: the Lighting Indoor RTS is correctly fitted into the bracket so that the wires are not pinched.
- Ensure that the wires are not squashed by the Lighting Indoor RTS terminal when pushing into the assembly fitting.



- Follow the steps described in section 6 "Programming the control point" before fitting the cover.

6. Programming the control point

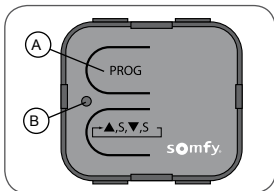
To commission the Lighting Indoor RTS, a RTS control point must be recorded in the Lighting Indoor RTS.

This control point is used to switch bulbs connected to the Lighting Indoor RTS on or off.

N.B.: These instructions only describe the installation procedure for an "individual control" type Lighting Indoor RTS. Refer to the instructions for advanced functions available on the Internet (address on the back cover of these instructions) to install a "group control" or a "multiple control".

6.1 Accessing the Lighting Indoor RTS PROG button

The PROG button (A) is located near the word "PROG", above the indicator light (B) and is shaped like a tab.



6.2 Identifying the control point

- Identify the control point in the list below and refer to the section indicated to program the control point in the Lighting Indoor RTS:

1) Control point fitted to the wall with a single button, called a One-touch point, see paragraph 6.3;

2) Control point fitted to the wall with Up/STOP/Down buttons, called a Point with Up/STOP/Down buttons, see paragraph 6.4;

3) Programmable control point, called a Timer, see paragraph 6.5;

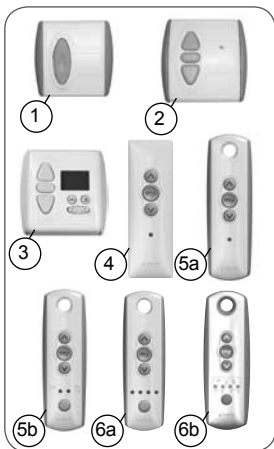
4) Situo control point fitted to the wall, see paragraph 6.6;

5a) Telis 1 RTS remote control, see paragraph 6.7;

5b) Telis Soliris RTS remote control, see paragraph 6.7;

6a) Telis 4 RTS remote control, see paragraph 6.8;

6b) Telis 4 Soliris RTS remote control, see paragraph 6.8.



6.3 One-touch point

6.3.1 Identifying the model

- Check that the control point has an elongated button.
- Remove the front cover from the one-touch point:

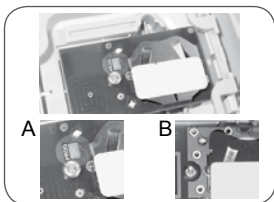
One-touch point with a white and grey front cover:

- Gently remove the front cover with a flat, pointed tool (such as a flathead screwdriver) where the white section and the grey section join.
- Lever it and lift the cover upwards, without using force, to detach the mounting lugs from the front cover.



One-touch point with a white front cover:

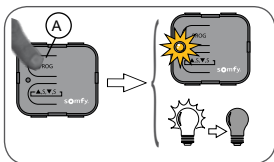
- Lever it with a flat, pointed tool (such as a flathead screwdriver), without using force, around the upper section of the front cover to detach it from its bracket.
- Turn the front cover over to find out the model:
 - If there is a metal plate inscribed PROG next to the battery: model A.
 - If there is no metal plate inscribed PROG next to the battery: model B.



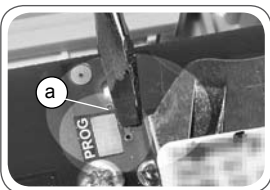
6.3.2 Programming a control point in the Lighting Indoor RTS

Model A:

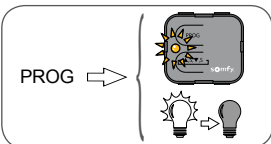
- Restore the electric power supply.
- Press and hold the PROG button (A) on the Lighting Indoor RTS:
 - ▶ The indicator light comes on.
 - ▶ The bulb connected to the Lighting Indoor RTS comes on and then goes off.
 - ▶ The Lighting Indoor RTS PROG function is activated for approximately 2 minutes.



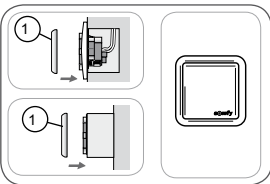
- Take the one-touch control point.
- Make a contact between the PROG metal plate (a) on the electrical circuit and the battery bracket using a flathead screwdriver:
 - ▶ The Lighting Indoor RTS indicator light flashes.
 - ▶ The bulb connected to the Lighting Indoor RTS comes on and then goes off.
 - ▶ The control point is programmed in the Lighting Indoor RTS.



- Press the switch on the control point:
 - If the bulb connected to the Lighting Indoor RTS lights up, the Lighting Indoor RTS works.
 - If the bulb connected to the Lighting Indoor RTS does not light up, contact the Somfy assistance service.



- Fit the cover (1) on the Lighting Indoor RTS:
 - Place the cover on the Lighting Indoor RTS so that the Somfy logo can be seen in the bottom right-hand side.
 - Press on the cover until a click is heard: the cover is correctly fitted onto the Lighting Indoor RTS.



- Refit the control point front cover:

One-touch point with a white and grey front cover:

- Insert the mounting lugs into their notches on one side of the front cover.
- Press on the other side until it clicks, to fix the front cover in its bracket

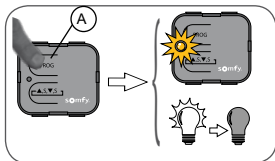
One-touch point with a white front cover:

- Refit the front cover on its bracket

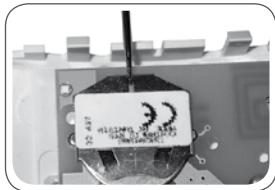
Model B:

- Restore the electric power supply.
- Press and hold the PROG button (A) on the Lighting Indoor RTS:

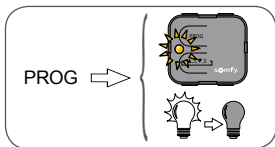
- ▶ The indicator light comes on.
- ▶ The bulb connected to the Lighting Indoor RTS comes on and then goes off.
- ▶ The Lighting Indoor RTS PROG function is activated for approximately 2 minutes.



- Take the one-touch control point.
- Remove the battery from the one-touch control point using a plastic object.
- Press on the centre section of the one-touch point button.
- Refit the battery in the base of its bracket (with text legible).
- Press the one-touch point button again:



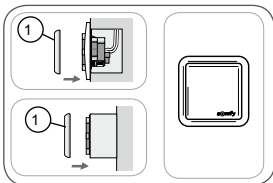
- ▶ The Lighting Indoor RTS indicator light flashes.
- ▶ The bulb connected to the Lighting Indoor RTS comes on and then goes off.
- ▶ The control point is programmed in the Lighting Indoor RTS.



- Press the one-touch control point button:
 - If the bulb connected to the Lighting Indoor RTS lights up, the Lighting Indoor RTS works.
 - If the bulb connected to the Lighting Indoor RTS does not light up, contact the Somfy assistance service.

- Fit the cover (1) on the Lighting Indoor RTS:

- Place the cover on the Lighting Indoor RTS so that the Somfy logo can be seen in the bottom right-hand side.
- Press on the cover until a click is heard: the cover is correctly fitted onto the Lighting Indoor RTS.



- Refit the control point front cover:

One-touch point with a white and grey front cover:

- Insert the mounting lugs into their notches on one side of the front cover.
- Press on the other side until it clicks, to fix the front cover in its bracket.

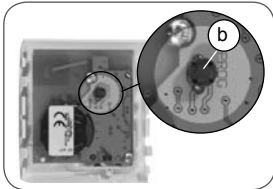
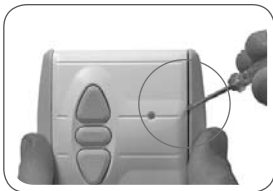
One-touch point with a white front cover:

- Refit the front cover on its bracket

6.4 Point with Up/STOP/Down buttons

6.4.1 Checking the compatibility

- Make sure that the mains power supply is off.
- Remove the front cover from the control point:
 - Gently remove the front cover with a flat, pointed tool (such as a flathead screwdriver) where the white section and the grey section join.
 - Lever it and lift the cover upwards, without using force, to detach the mounting lugs from the front cover.
- Turn the front cover over:
 - ▶ The PROG button is located next to the battery (b).

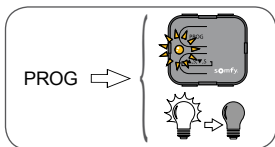
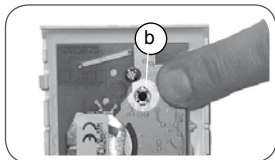
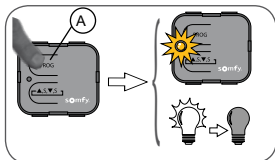


Caution! If, after removing the front cover, no PROG button is found, this means

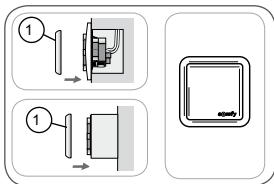
that the control point is not compatible:
It cannot be programmed in the Lighting
Indoor RTS.

6.4.2 Programming a control point in the Lighting Indoor RTS

- Restore the mains power supply.
- Press and hold the PROG button (A) on
the Lighting Indoor RTS:
 - ▶ The indicator light comes on.
 - ▶ The bulb connected to the Lighting
Indoor RTS comes on and then
goes off.
 - ▶ The Lighting Indoor RTS
PROG function is activated for
approximately 2 minutes.
- Quickly press the PROG button (b) on
the control point:
 - ▶ The Lighting Indoor RTS indicator
light flashes.
 - ▶ The bulb connected to the Lighting
Indoor RTS comes on and then
goes off.
 - ▶ The control point is programmed
in the Lighting Indoor RTS.
- Press the "Up" switch at the control
point:
 - If the bulb connected to the Lighting
Indoor RTS lights up, the Lighting
Indoor RTS works.
 - If the bulb connected to the Lighting
Indoor RTS does not light up, contact
the Somfy assistance service.
- Refit the control point front cover:
 - Insert the mounting lugs into their
notches on one side of the front
cover.



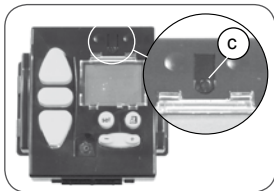
- Press on the other side until it clicks, to fix the front cover in its bracket.
- Fit the cover (1) on the Lighting Indoor RTS:
 - Place the cover on the Lighting Indoor RTS so that the Somfy logo can be seen in the bottom right-hand side.
 - Press on the cover until a click is heard: the cover is correctly fitted onto the Lighting Indoor RTS.



6.5 Timer

6.5.1 Checking the compatibility

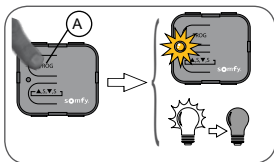
- Make sure that the mains power supply is off.
- Remove the front cover of the original control point:
 - Lever it with a flat, pointed tool (such as a flathead screwdriver), without using upper force, around the upper section of the front cover to detach it from its bracket.
 - ▶ The PROG button is located on top of the screen and is shaped like a tab (c).



Caution! If after removing the front cover, no PROG button is found, this means that the control point is not compatible: It cannot be programmed in the Lighting Indoor RTS.

6.5.2 Programming a control point in the Lighting Indoor RTS

- Restore the mains power supply.
- Press and hold the PROG button (A) on the Lighting Indoor RTS:
 - ▶ The indicator light comes on.
 - ▶ The bulb connected to the Lighting Indoor RTS comes on and then

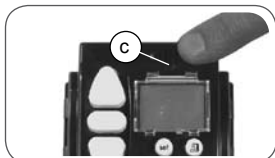


goes off.

- ▶ The Lighting Indoor RTS PROG function is activated for approximately 2 minutes.

- Quickly press the tab (c) on the control point:

- ▶ The Lighting Indoor RTS indicator light flashes.
- ▶ The bulb connected to the Lighting Indoor RTS comes on and then goes off.
- ▶ The control point is programmed in the Lighting Indoor RTS.



- Press the "Up" switch at the control point:

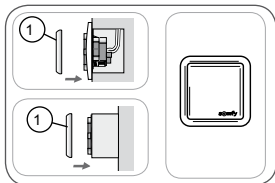
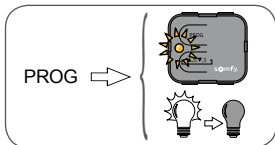
- If the bulb connected to the Lighting Indoor RTS lights up, the Lighting Indoor RTS works.
- If the bulb connected to the Lighting Indoor RTS does not light up, contact the Somfy assistance service.

- Refit the control point front cover:

- Insert the front cover on its bracket, allowing the buttons to come through their housings.
- Press the front until it clicks, to fix the front cover in its bracket.

- Fit the cover (1) on the Lighting Indoor RTS:

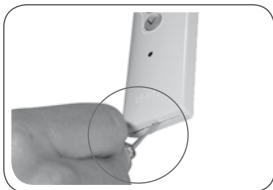
- Place the cover on the Lighting Indoor RTS so that the Somfy logo can be seen in the bottom right-hand side.
- Press on the cover until a click is heard: the cover is correctly fitted onto the Lighting Indoor RTS.



6.6 Situo control point

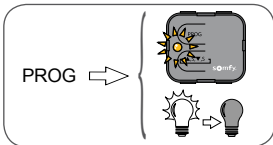
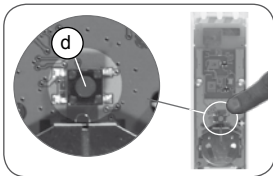
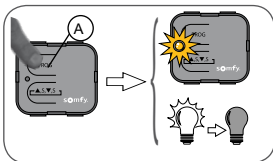
6.6.1 Accessing the PROG button on the Situo

- Remove the front cover from the Situo:
 - Gently remove the front cover with a flat, pointed tool (such as a flathead screwdriver) around the lower section.
 - Lever it and lift the cover upwards, without using force, to detach the mounting lugs from the front cover.
 - Turn the front cover over:
 - ▶ The PROG button is located next to the battery (d).



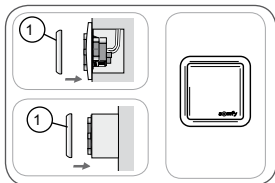
6.6.2 Programming a control point in the Lighting Indoor RTS

- Restore the mains power supply.
- Press and hold the PROG button (A) on the Lighting Indoor RTS:
 - ▶ The indicator light comes on.
 - ▶ The bulb connected to the Lighting Indoor RTS comes on and then goes off.
 - ▶ The Lighting Indoor RTS PROG function is activated for approximately 2 minutes.
- Briefly press the PROG button (d) on the Situo:
 - ▶ The Lighting Indoor RTS indicator light flashes.
 - ▶ The bulb connected to the Lighting Indoor RTS comes on and then goes off.
 - ▶ The control point is programmed in the Lighting Indoor RTS.
- Press the Up button on the Situo:
 - If the bulb connected to the Lighting



Indoor RTS lights up, the Lighting Indoor RTS works.

- If the bulb connected to the Lighting Indoor RTS does not light up, contact the Somfy assistance service.
- Replace the Situo front panel:
 - Insert the mounting lugs in their notches.
 - Press the lower section until it clicks, to fix the front cover in its bracket.
- Fit the cover (1) on the Lighting Indoor RTS:
 - Place the cover on the Lighting Indoor RTS so that the Somfy logo can be seen in the bottom right-hand side.
 - Press on the cover until a click is heard: the cover is correctly fitted onto the Lighting Indoor RTS.



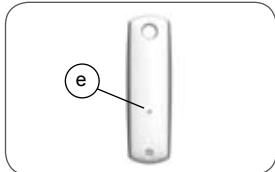
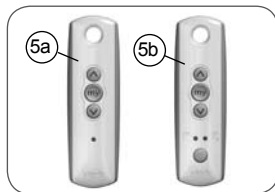
6.7 Telis 1 RTS/Telis Soliris RTS remote controls

The Telis 1 RTS has 1 indicator light (5a) and the Telis Soliris RTS has 2 indicator lights (5b).

If the remote control has more than 2 indicator lights, refer to the section "Telis 4 RTS/Telis 4 Soliris RTS remote controls".

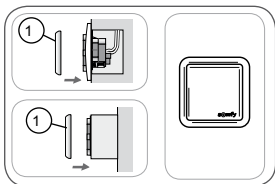
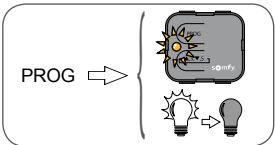
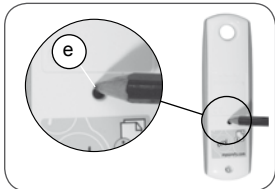
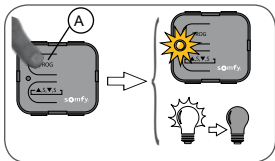
6.7.1 Accessing the PROG button on the Telis

- Turn the Telis over:
 - ▶ The PROG button (e) is located on the rear panel.



6.7.2 Programming a control point in the Lighting Indoor RTS

- Restore the mains power supply.
- Press and hold the PROG button (A) on the Lighting Indoor RTS:
 - ▶ The indicator light comes on.
 - ▶ The bulb connected to the Lighting Indoor RTS comes on and then goes off.
 - ▶ The Lighting Indoor RTS PROG function is activated for approximately 2 minutes.
- Press the PROG button (e) on the Telis briefly with the tip of a pencil:
 - ▶ The Lighting Indoor RTS indicator light flashes.
 - ▶ The bulb connected to the Lighting Indoor RTS comes on and then goes off.
 - ▶ The control point is programmed in the Lighting Indoor RTS.
- Press the Up button on the Telis:
 - If the bulb connected to the Lighting Indoor RTS lights up, the Lighting Indoor RTS works.
 - If the bulb connected to the Lighting Indoor RTS does not light up, contact the Somfy assistance service.
- Fit the cover (1) on the Lighting Indoor RTS:
 - Place the cover on the Lighting Indoor RTS so that the Somfy logo can be seen in the bottom right-hand side.
 - Press on the cover until a click is heard: the cover is correctly fitted onto the Lighting Indoor RTS.

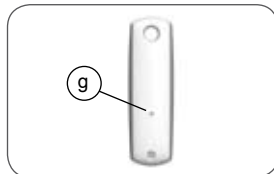
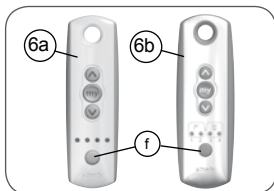


6.8 Telis 4 RTS/Telis 4 Soliris RTS remote controls

The Telis 4 RTS (6a) and Telis 4 Soliris RTS (6b) have 4 indicator lights.

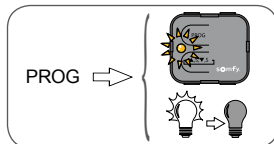
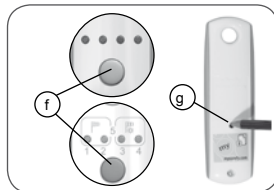
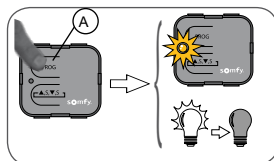
6.8.1 Accessing the PROG button on the Telis

- On the Telis, select the indicator light which will control the bulb connected to the Lighting Indoor RTS, using button (f).
- Turn the Telis over:
 - ▶ The PROG button (g) is located on the rear panel.



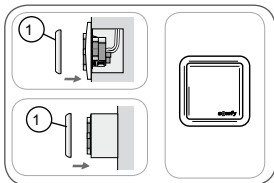
6.8.2 Programming a control point in the Lighting Indoor RTS

- Restore the mains power supply.
- Press and hold the PROG button (A) on the Lighting Indoor RTS:
 - ▶ The indicator light comes on.
 - ▶ The bulb connected to the Lighting Indoor RTS comes on and then goes off.
 - ▶ The Lighting Indoor RTS PROG function is activated for approximately 2 minutes.
- On the Telis, select the indicator light which will control the bulb connected to the Lighting Indoor RTS, using button (f).
- Press the PROG button (g) on the Telis briefly with the tip of a pencil:
 - ▶ The Lighting Indoor RTS indicator light flashes.
 - ▶ The bulb connected to the Lighting Indoor RTS comes on and then goes off.
 - ▶ The control point is programmed



in the Lighting Indoor RTS.

- Press the Up button on the Telis:
 - If the bulb connected to the Lighting Indoor RTS lights up, the Lighting Indoor RTS works.
 - If the bulb connected to the Lighting Indoor RTS does not light up, contact the Somfy assistance service.
- Fit the cover (1) on the Lighting Indoor RTS:
 - Place the cover on the Lighting Indoor RTS so that the Somfy logo can be seen in the bottom right-hand side.
 - Press on the cover until a click is heard: the cover is correctly fitted onto the Lighting Indoor RTS.



7. Replacing a lost or broken control point

If the control point programmed in the Lighting Indoor RTS is lost or broken, another RTS control point must be programmed in order to switch the bulb connected to the Lighting Indoor RTS on and off.

CAUTION! no more than 12 control points can be recorded in a Lighting Indoor RTS.

- Take another control point which is compatible with the Lighting Indoor RTS.
- Follow the steps described in the section "Programming the control point in the Lighting Indoor RTS" according to the control point model.

Note: If after following this operation the indicator light on the Lighting Indoor RTS does not light up, contact Somfy assistance service for advice on replacement.

8. Everyday use of the Lighting Indoor RTS

8.1 Operating

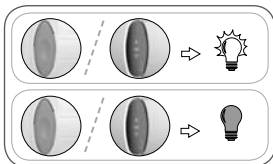
The lighting operation differs according to the control point connected to the Lighting Indoor RTS.

- There are three categories of control point:
 - One-touch point;

- Telis 4 RTS and Telis 4 Soliris RTS remote controls;
- Other RTS control points: Point with Up/STOP/Down buttons, Timer, Situo wall-mounted control point, Telis 1 RTS and Telis Soliris RTS remote controls.

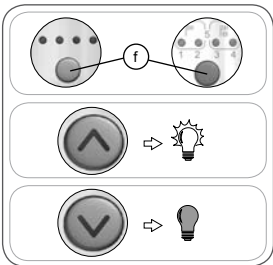
8.1.1 Operation using a One-touch point

- Press the button on the One-touch point to switch the bulb connected to the Lighting Indoor RTS on and off:
 - ▶ On/Off/On/Off/On etc.



8.1.2 Operation using a Telis 4 RTS or Telis 4 Soliris RTS remote control

- On the remote control, use button (f) to select the indicator light which controls the bulb connected to the Lighting Indoor RTS.



To switch the bulb on:

- Press the Up button:

To switch the bulb off:

- Press the Down button:

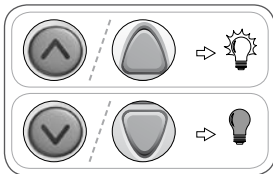
8.1.3 Operation with other RTS control points

To switch the bulb on:

- Press the Up button:

To switch the bulb off:

- Press the Down button:



8.2 Maintenance

- Clean the Lighting Indoor RTS with a damp cloth using multipurpose household or glass cleaning product.
- Never immerse or soak the Lighting Indoor RTS in any liquid.

9. Problems with the Lighting Indoor RTS?

Problem	Possible causes	Solutions
The Lighting Indoor RTS indicator light does not come on.	The Lighting Indoor RTS wiring is incorrect.	Switch off the power supply and check the wiring – see section 5 "Mounting the Lighting Indoor RTS".
	The power supply is off.	Restore the mains power supply.
	The Lighting Indoor RTS fuse has blown.	Change the fuse – see section 10 "Changing the fuse".
The Lighting Indoor RTS cannot be used after following the procedure step by step.	The control point has not been successfully programmed on the Lighting Indoor RTS.	Contact the Somfy assistance service.
The bulb connected to the Lighting Indoor RTS does not come on or go off after briefly pressing the corresponding button on the control point.	The control point is too far away from the Lighting Indoor RTS.	Bring the Lighting Indoor RTS closer and try pressing a button on the control point again. If it still does not work, replace the control point battery.
	The control point battery is flat.	Replace the battery with a battery with the same specifications – refer to the control point guide.
	The bulb has blown.	Switch off the power supply and replace the faulty bulb with a new bulb. Restore the mains power supply.

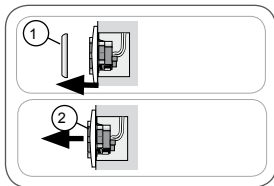
Problem	Possible causes	Solutions
The bulb connected to the Lighting Indoor RTS comes on after pressing the Down button on the control point. The bulb connected to the Lighting Indoor RTS goes off after pressing the Up button on the control point.	The remote control is being held the wrong way round.	Turn the remote control around so that the indicator light is below the Up/my/ Down buttons.
	The control point is mounted the wrong way round.	Disassemble the control point and refit it the other way round.
The control point switches another bulb on or off.	There has been a problem when programming the control point in the Lighting Indoor RTS.	Contact the Somfy assistance service.

- For any problems or unresolved questions, please contact the Somfy assistance service on the number given on the back cover of this guide.

10. Changing the fuse

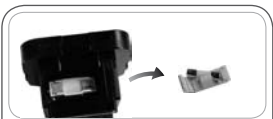
Environment! Do not dispose of the used fuse with household waste, see paragraph 2.3.

- Cut off the mains power supply.
- Remove the cover (1) from the Lighting Indoor RTS:
 - Gently remove the cover using a flat, pointed tool (such as a flathead screwdriver) on one of the sides, around the notch.
 - Lever it and lift the cover upwards, without using force, to detach the mounting lugs from the cover.
- Remove the Lighting Indoor RTS (2)



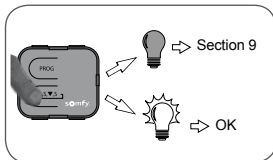
from the frame (or the surface mounting housing) without pulling on the supply cables.

- ▶ The fuse is located in the removable fuse-holder which shows the fuse part numbers.
- Remove the removable fuse-holder using a flathead screwdriver:
 - Gently remove the removable fuse-holder using a flat, pointed tool (such as a flathead screwdriver) around the notch on the edge of the rounded side.
 - Gently lever it to detach the mounting lug on the other side of the removable fuse-holder.
- Remove the fuse from the fuse-holder by pushing it out of the retaining bracket.
- Insert a fuse of the same specifications.
- Replace the fuse-holder on the Lighting Indoor RTS:
 - Insert the mounting lug in its notch.
 - Slide the other end into the notch.
 - Press on the rounded end until the fuse-holder clicks into the Lighting Indoor RTS.
- Make sure that power supply cables are always connected:
 - Otherwise refit the wires in the corresponding wires - see section 5 "Mounting the Lighting Indoor RTS".
- Insert the Lighting Indoor RTS into the bracket.
 - Refit the Lighting Indoor RTS so that "PROG" can be read.
 - Press the Lighting Indoor RTS until a click is heard: the Lighting Indoor

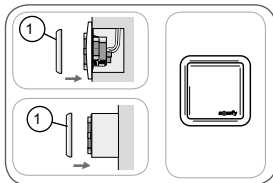


RTS is correctly fitted into the bracket .

- Restore the mains power supply.
- Check that the fuse works correctly:
 - Press the Lighting Indoor RTS control button.
 - ▶ If the bulb connected to the Lighting Indoor RTS does not light up, see section 9 "Problems with the Lighting Indoor RTS?".
 - ▶ If the bulb connected to the Lighting Indoor RTS lights up, then the new fuse is correct.
- Refit the cover (1) on the Lighting Indoor RTS:



- Place the cover (1) on the Lighting Indoor RTS so that the Somfy logo can be seen in the bottom right-hand side.
- Press on the cover until a click is heard: the cover is correctly fitted onto the Lighting Indoor RTS.



Where to find us

Australia

Somfy PTY LTD

Tel: +61 (0)2 9638 0744

Website: www.somfy.com/au/index.cfm

Canada

Somfy ULC

Tel: +1 (0) 905 564 6446

Website: www.somfy.com/nam/index.cfm?language=en-us

United Kingdom

Somfy LTD

Tel: +44 (0) 113 391 3030

Website: www.somfy.co.uk/

United States of America

Somfy Systems Inc.

Tel: +1 (0) 609 395 1300

Website: www.somfy.com/nam/index.cfm?language=en-us



Somfy hereby declares that this product conforms to the essential requirements and other relevant provisions of Directive 1999/5/CE. A Declaration of Conformity is available at www.somfy.com/ce.

For use in the European Union, the Swiss Confederation (Switzerland) and Norway.