

INTERFACE FOR LG 2234 THREE-PHASE MOTORS

GB

The LG 2234 interface allows to control the 230 – 400 Vac three-phase motors even if it has any 230 Vac Mono-phase control unit or via 230 Vac controls given by 2-way push button control (Open-Close type).

TECHNICAL FEATURES

- Power supply: 230/400V~ 50/60Hz: 400V - 3kW Max. / 230V - 2.2kWMax.
- Motor output: 400V - 3kW Max. / 230V - 2.2kW Max.
- Control inputs: 230V~ 50/60Hz
- Working temperature: -10÷55°C
- Board support: ABS UL94V-0

CONNECTION OF THE TERMINAL BOARD CN1

- 1: 230-400V~ 50/60Hz Three-phase line input (R).
- 2: 230-400V~ 50/60Hz Three-phase line input (S).
- 3: 230-400V~ 50/60Hz Three-phase line input (T).

CONNECTION OF THE TERMINAL BOARD CN2

- 1: "Phase 230~ 50/60Hz" Opening Control Input (AP).
- 2: "Neutral 230~ 50/60Hz " Common Control Input (COM).
- 3: "Phase 230~ 50/60Hz " Closure Control Input (CH).

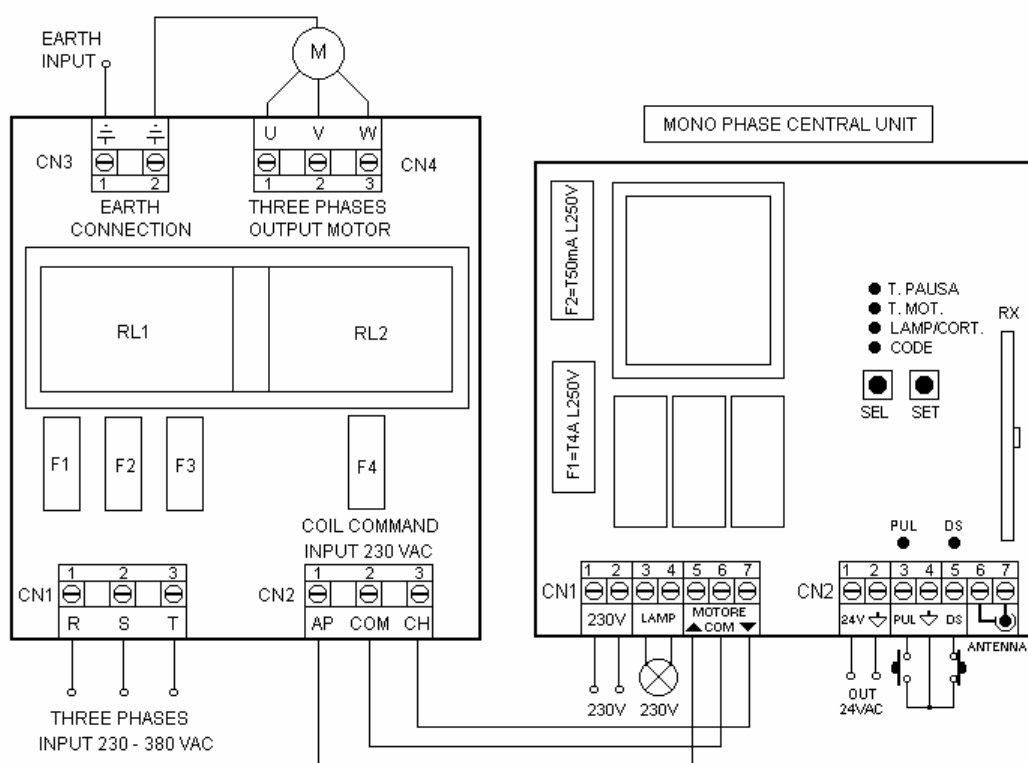
CONNECTION OF THE TERMINAL BOARD CN3

- 1: Earth Connection (Line).
- 2: Earth Connection (Engine).

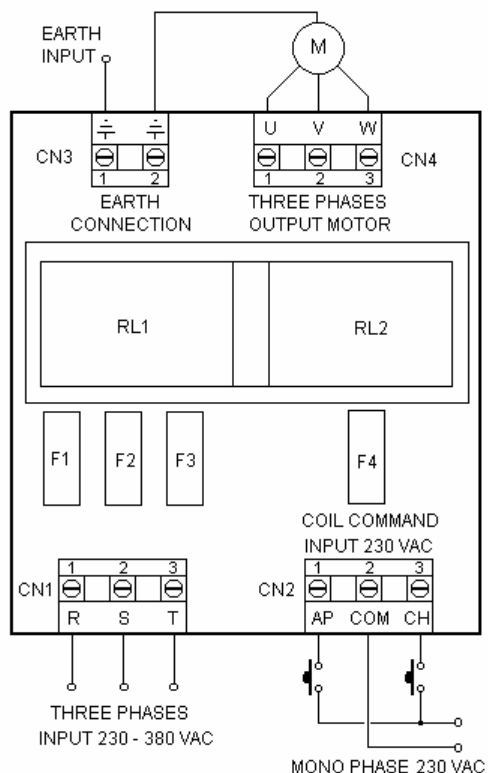
CONNECTION OF THREE TERMINAL BOARD CN4

- 1: 230-400V~ 50/60Hz Three-phase Motor Outlet (U).
- 2: 230-400V~ 50/60Hz Three-phase Motor Outlet (V).
- 3: 230-400V~ 50/60Hz Three-phase Motor Outlet (W).

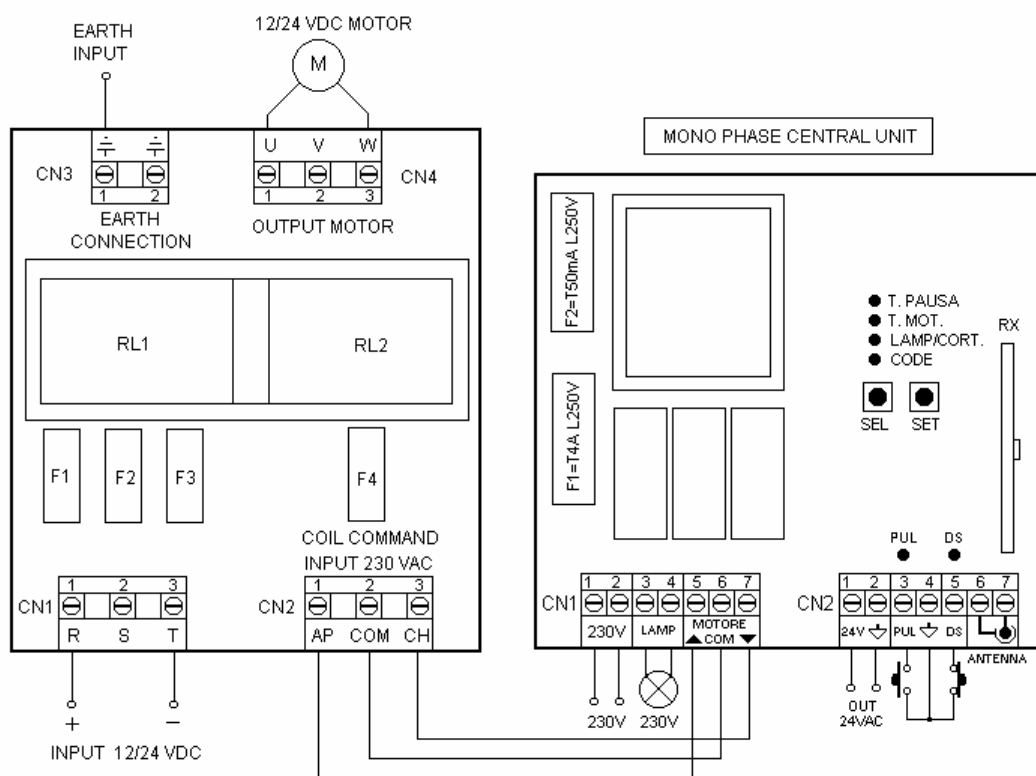
WIRING DIAGRAM FOR 230/400V THREE-PHASE MOTORS WITH 230 VAC MONO-PHASE CONTROL UNITS



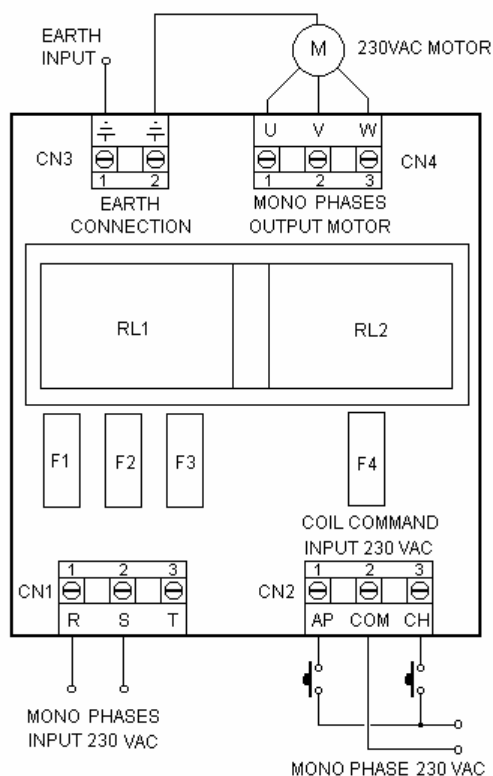
WIRING DIAGRAM FOR 230/400V THREE-PHASE MOTORS WITH 230 VAC 2-WAY PUSH BUTTON CONTROL



WIRING DIAGRAM FOR MOTORS IN D.C 12/24 VDC WITH 230 VAC MONO-PHASE CONTROL UNITS



WIRING DIAGRAM FOR 230V MOTOR PHASE MOTORS WITH 230 VAC 2-WAY PUSH BUTTON CONTROL



FOR THE INSTALLATION TECHNICIAN – IMPORTANT

- The device does not have any circuit-breaking devices. The installer must therefore fit the system with a circuit-breaker. An overvoltage category III single-pole switch should be installed. This should be installed in such a way as to be protected against accidental reclosing.
- Attention: this device is part of a more complex installation: the protective features of the device must therefore be valued and integrated in the final installation.

Attention

All of the operations that request the casing to be opened (cables connection, etc.) must be carried out in the installation phase by expert staff. For any further operations that require the case to be opened again (repairs or installation modifications) contact the after-sales assistance.

SEAV s.r.l. declares that the product:

LG2234

is in compliance with the specifications with the specifications of the EMC 2004/108/EC, LVD 2006/95/EC Directives.



SEAV s.r.l.

Via Oriana Fallaci 4/6
60027 Osimo (AN) Italy
www.seav.com