

# INSTALLATION AND CONNECTION OF THE KEY SAFE



## GENERAL POINTS

The smart key safe makes managing your keys and premises easy.

### The key safe is available with and without a proximity reader:

- With proximity reader included in IntraBox key safe.
- Without proximity reader to add to existing installation.

You can choose a model to be fitted **flush or projecting from the wall**, or one that can be fitted **to another installation** (a post, pre-hung door, etc.)

### The product is available in two versions:

- A "Basic" version with a "mechanical" hook.
- An "Exclusive" version with an electronic key holder and key monitoring system.

The key safe must be connected in **"Real Time"** to the following equipment:

- 2-4 door units (ref: 03-0101-EN).
- 1 door unit (ref: 03-0102-EN).
- GPRS Unit (ref: 17-0102-EN).

There are three ways to open the key safe to access the stored keys:


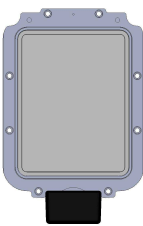

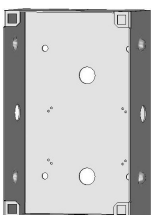

- With an authorised masterkey fob.
- By entering a special code
- By calling the manager from an intercom, who then opens the key safe using their mobile.

### Product description:

#### **Key safe:**

- ✓ Three hooks for storing keys up to 12cm long.
- ✓ A confirmation tone when the key safe is opened by its motor.
- ✓ Manage key monitoring alerts.

Manage the key safe remotely and in real time via our website: [www.intratone.com](http://www.intratone.com) in the "management website" tab"

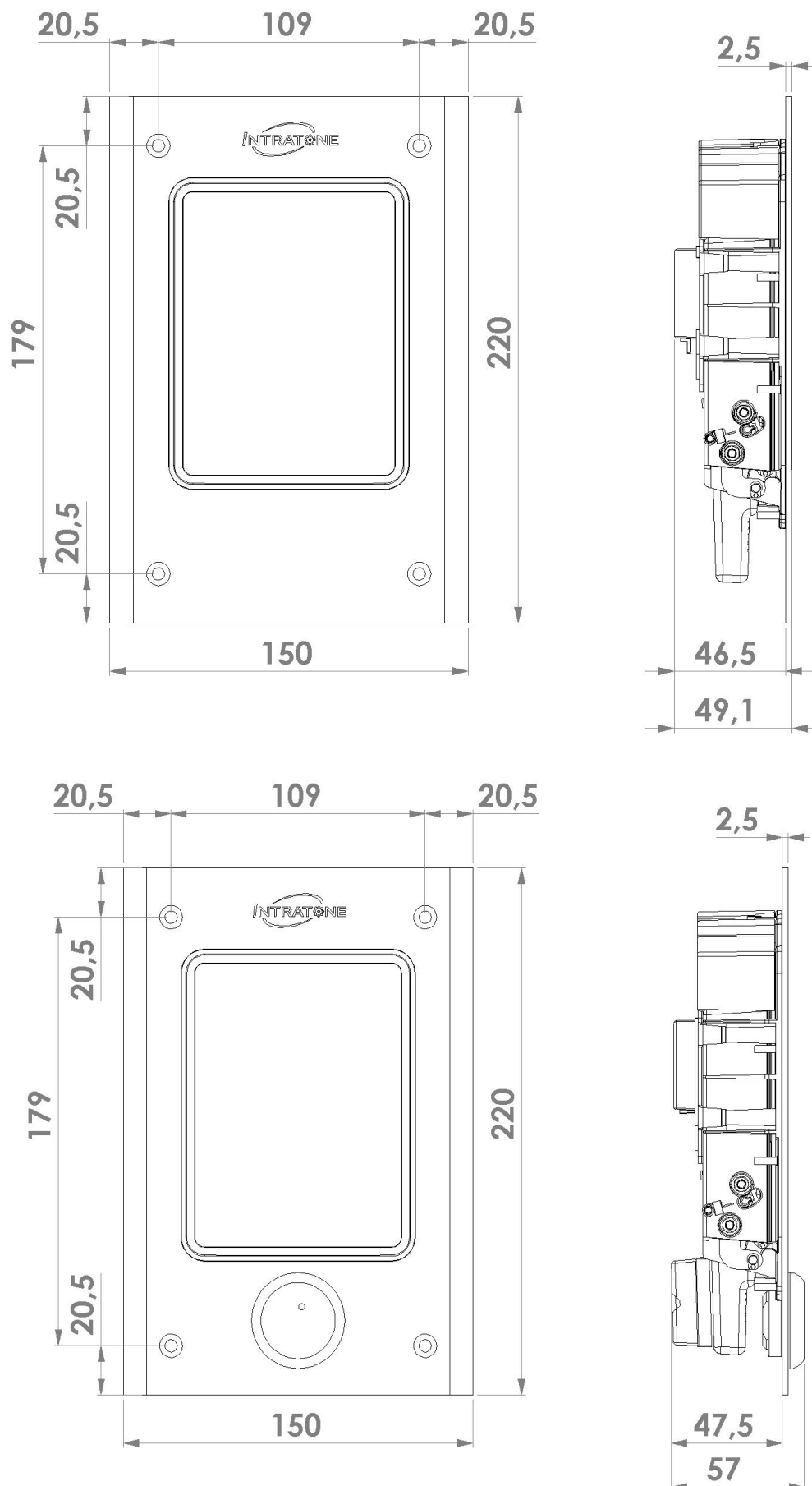
Flush fitted or box		Integrated unit
	Or	
	+	
	+	
		X 4

# CONTENTS

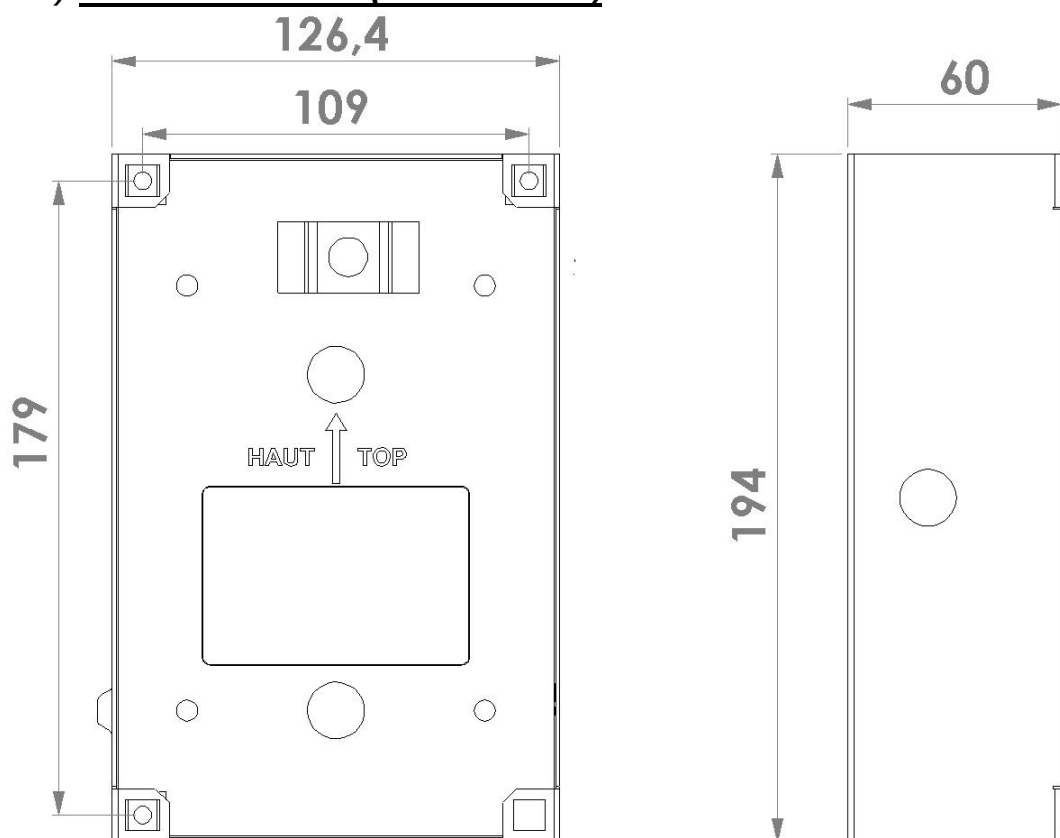
<b>GENERAL POINTS</b>	<b>1</b>
<b>CONTENTS</b>	<b>2</b>
<b>DIMENSIONS AND ASSEMBLY</b>	<b>3</b>
A) DIMENSIONS: FLUSH FITTED OR BOX	3
B) CASE DIMENSIONS (FLUSH FITTED)	4
C) CASE DIMENSIONS (BOX)	4
D) DIMENSIONS (INTEGRATED UNIT)	5
E) DRILLING FOR INTEGRATED UNIT	6
<b>WIRING</b>	<b>7</b>
<b>DEVICE CONFIGURATION</b>	<b>8</b>
A) GENERAL	8
B) HOW TO ADD AN EXTENSION TO AN EXISTING DEVICE	9
C) INSTALLATION OF AN INTRABOX KEY CABINET	10
<b>POST-INSTALLATION CHECKS</b>	<b>10</b>
<b>BREAKDOWN DIAGNOSTIC</b>	<b>11</b>
<b>CERTIFICATE OF COMPLIANCE</b>	<b>11</b>
A) STANDARDS:	11
B) CERTIFICATIONS:	12

# DIMENSIONS AND ASSEMBLY

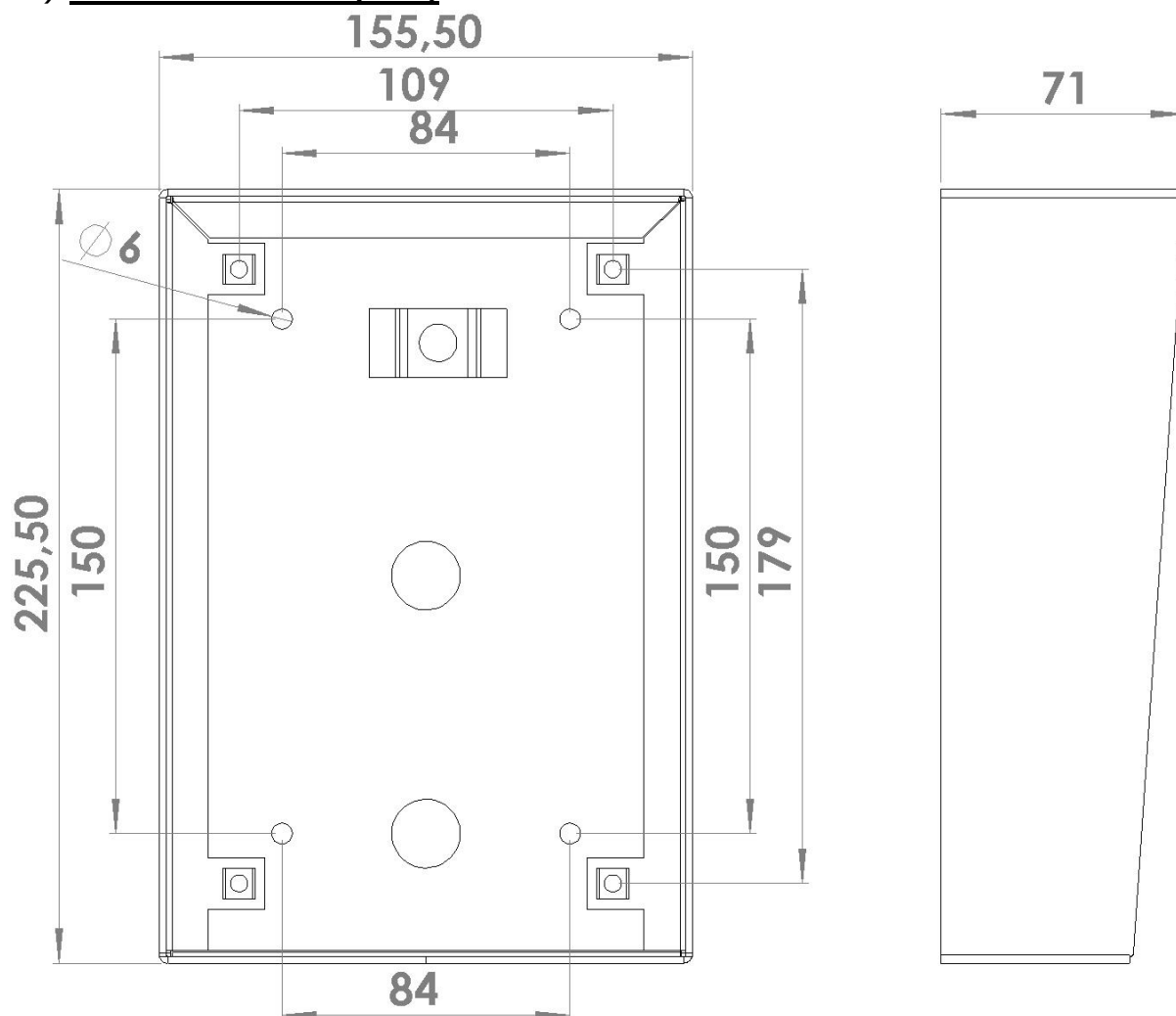
## A) DIMENSIONS: FLUSH FITTED OR BOX



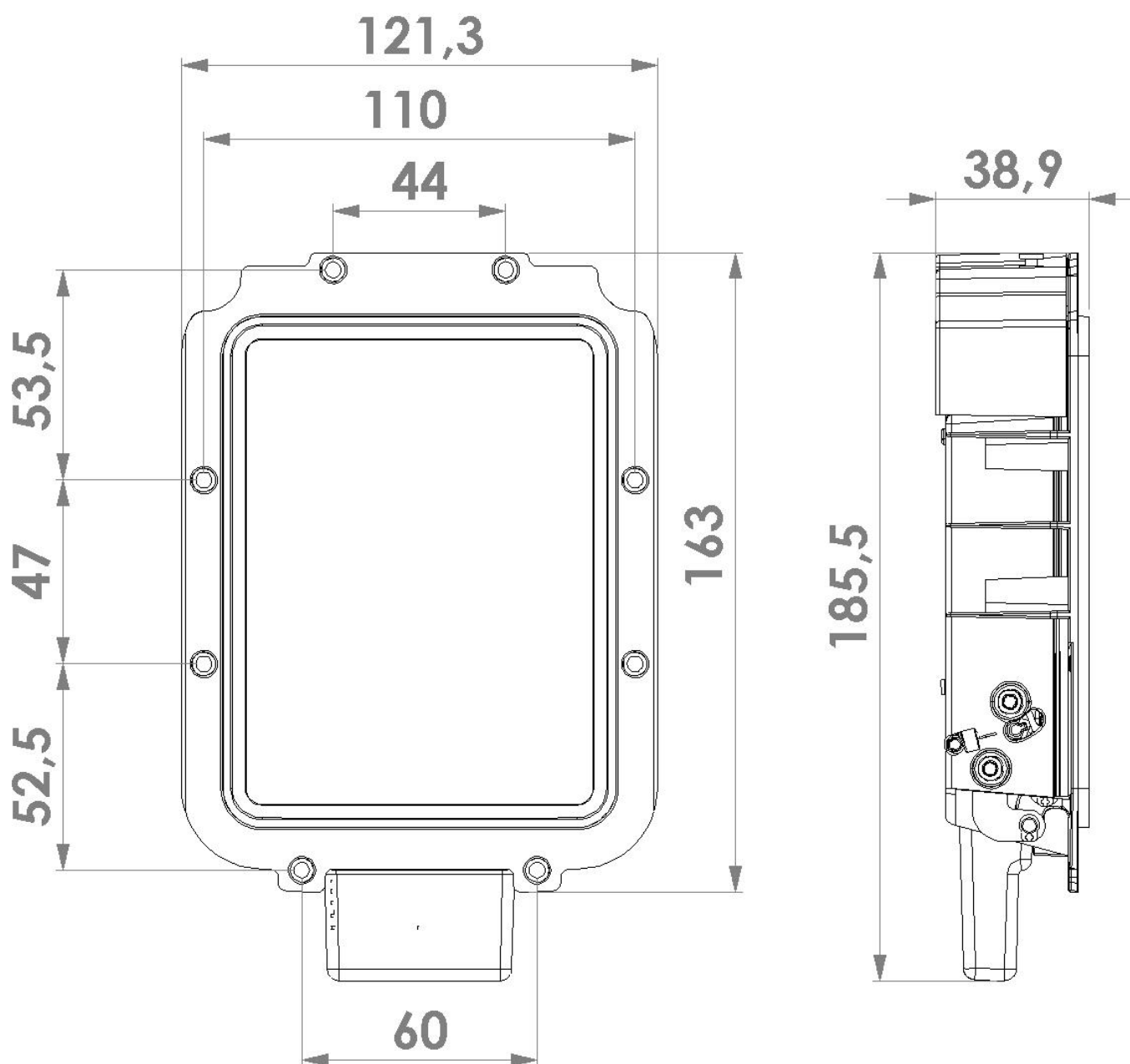
**B) CASE DIMENSIONS (FLUSH FITTED)**



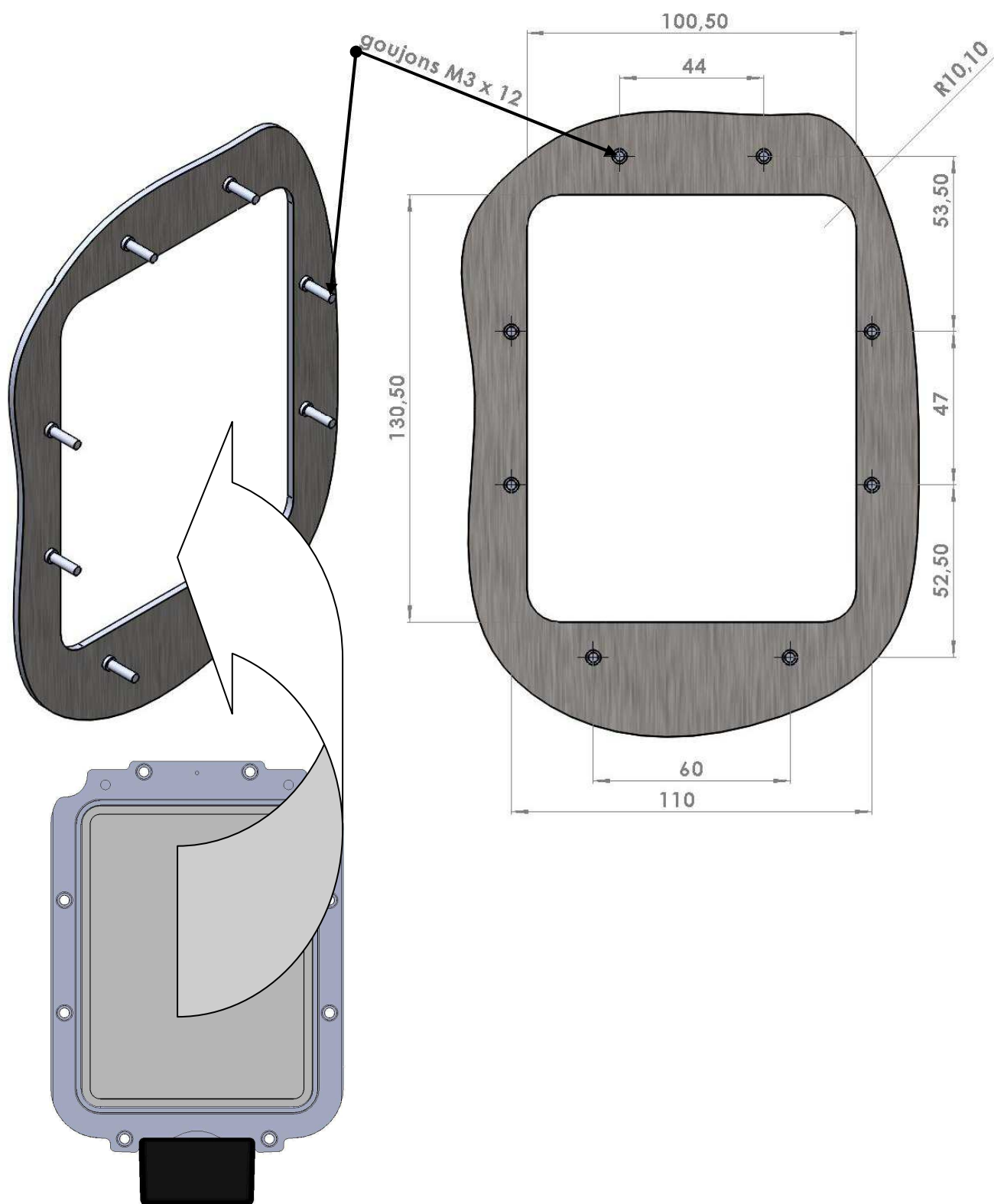
**C) CASE DIMENSIONS (BOX)**



**D) DIMENSIONS (INTEGRATED UNIT)**



### **E) DRILLING FOR INTEGRATED UNIT**



- ① Drill the panel that will hold the key safe
- ② Attach the pins
- ③ Fix the key safe and screw into place from rear
- ④ Wiring

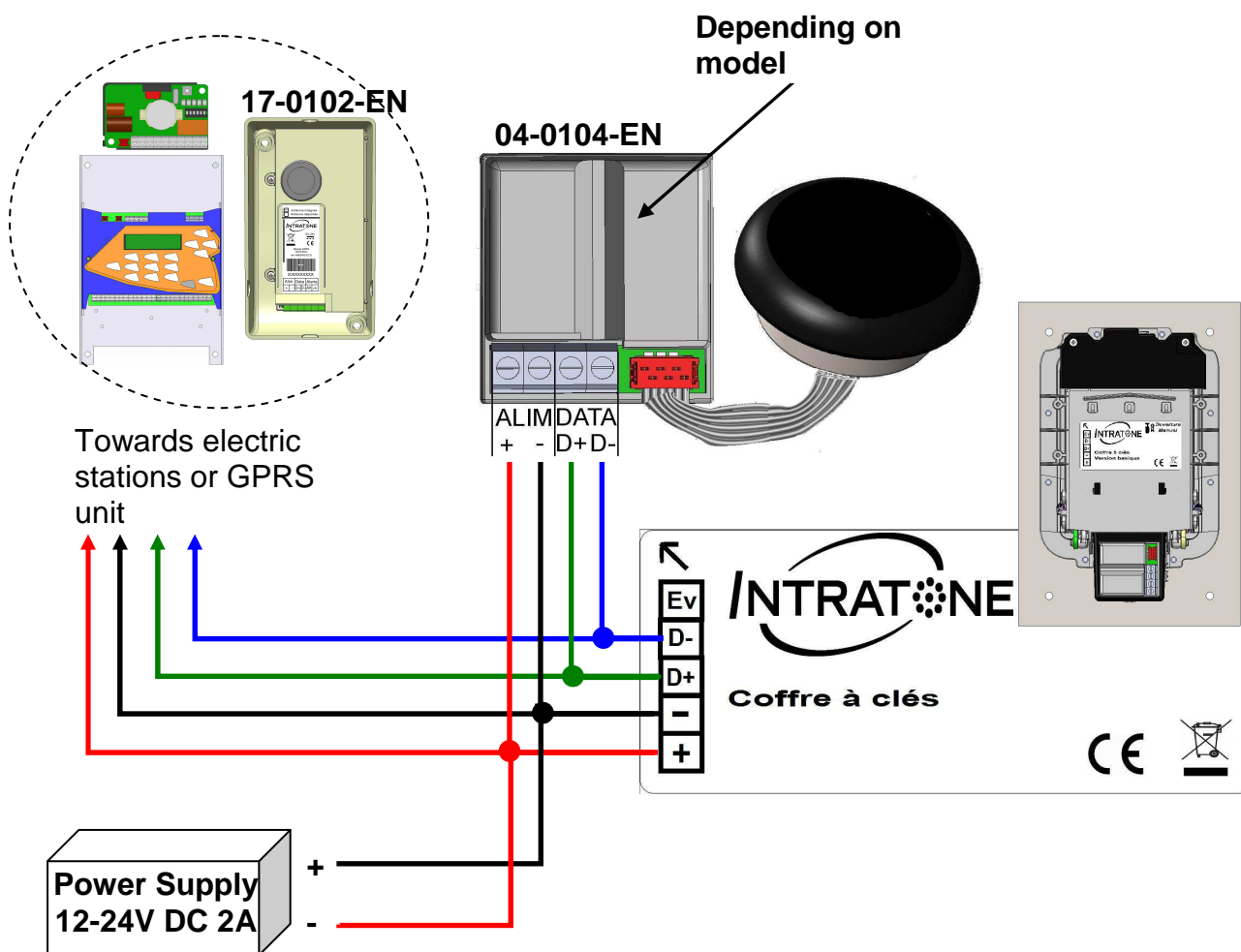
# WIRING

**POWER SUPPLY** The key safe is powered from the electric station or unit with +/- terminals.

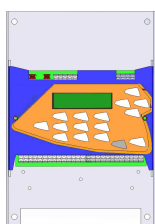
**WIRING** : **Twisted pairs** – Diameter: 0.8 – Max. distance 100m.



**Only connect one key safe per electrical station or unit**



## Note:



For 03-0101-EN units, the key safe can be connected **to any terminal**:

⇒ 11 to 14 or 21 to 24

⇒ 31 to 34 or 41 to 44 (extension card)

# DEVICE CONFIGURATION

## F) GENERAL




Key safes are always configured on the management website: [www.intratone.com](http://www.intratone.com) in the “management website” tab.

On the website, you can manage

- How your key safe is opened.
- The settings for alerts (e.g. Breaking of the key safe alert, etc.).
- Monitoring for keys stored in the key safe (exclusive version).

**Please note: The “Mobile key” feature is not available for this device.**

**Three ways to open your key safe:**

<b>Fob</b>		<p>From <a href="http://www.intratone.com">www.intratone.com</a> → “Key Safe” tab</p> <ul style="list-style-type: none"> <li>- Choose a key safe and then select a masterkey fob that will be used to open it.</li> <li>- Update your device in “real time”</li> </ul> <p><b>In front of the key safe:</b></p> <ul style="list-style-type: none"> <li>- Hold the masterkey fob in front of the read head for at least 5 seconds.</li> <li>- The key safe will unlock.</li> </ul>
<b>Keypad Code</b>		<p>From <a href="http://www.intratone.com">www.intratone.com</a> → “Key Safe” tab</p> <ul style="list-style-type: none"> <li>- Choose a key safe and then select a keypad code for a panel or coded keypad that will be used to open the key safe.</li> <li>- Update your device in “real time”.</li> </ul> <p><b>In front of the key safe:</b></p> <ul style="list-style-type: none"> <li>- Enter the code using the keypad</li> <li>- The key safe will unlock.</li> </ul>
<b>Telephone Code</b>		<p>From <a href="http://www.intratone.com">www.intratone.com</a> → “Key Safe” tab</p> <ul style="list-style-type: none"> <li>- Choose a key safe and then select a telephone code for a panel that will open this key safe. (Note: A code must contain at least 4 characters.)</li> <li>- Update your device in “real time”</li> </ul> <p><b>In front of the key safe:</b></p> <ul style="list-style-type: none"> <li>- A technician calls you from the panel.</li> <li>- You answer the call and enter the code on your telephone keypad.</li> <li>- The key safe will unlock remotely.</li> </ul>

## Alerts

Key safes can emit alerts (“Key safe door opened”, “Breaking” or “key monitoring”).

At [www.intratone.com](http://www.intratone.com) in the “management website” tab:

You can set the message to send and add the recipient’s email address.

In front of the key safe:

When an event occurs, an email is sent to the recipient containing the relevant information.

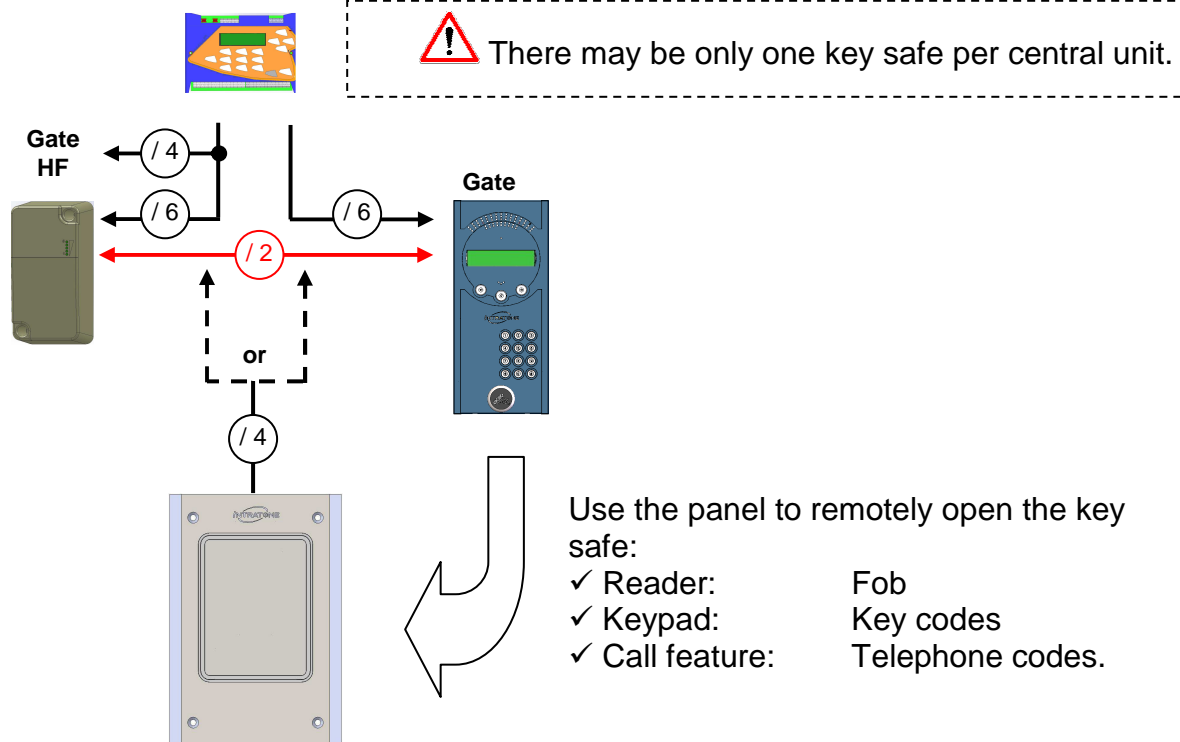
## Monitor keys stored in the key safe (exclusive version).

This feature is used to monitor keys stored in the key safe. It is only available on the exclusive version of the key safe.

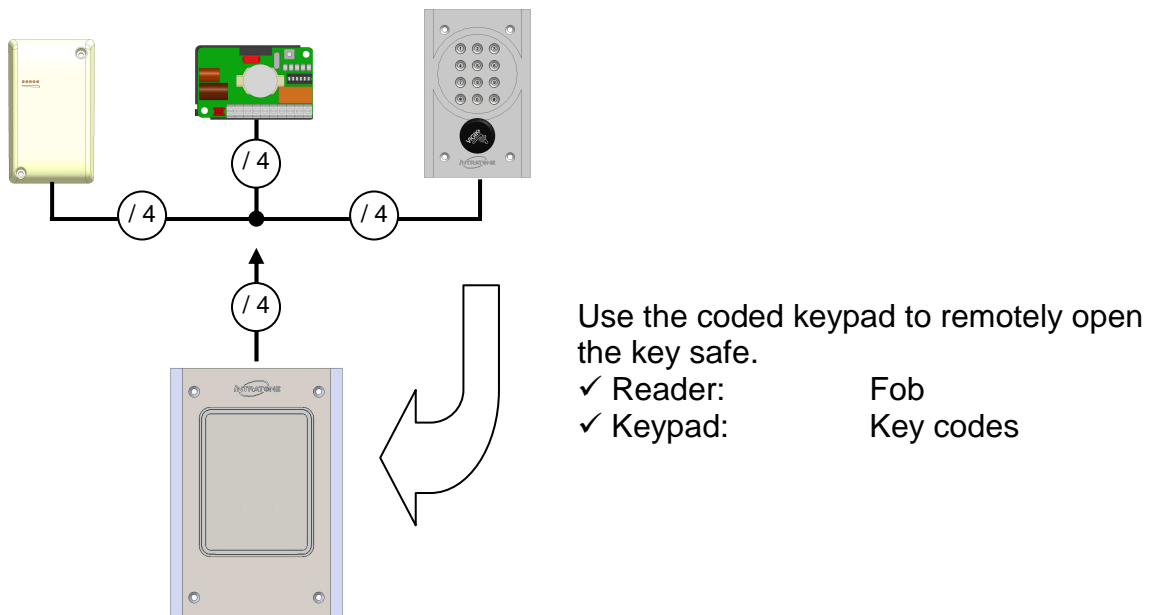


### G) HOW TO ADD AN EXTENSION TO AN EXISTING DEVICE

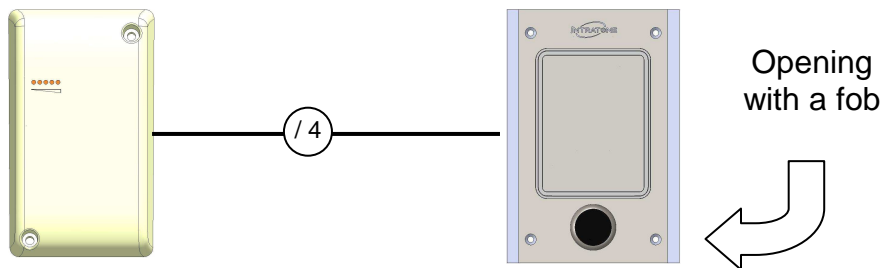
**Adding a key safe without reader to a 03-0101-EN unit already equipped with a intercom opening a gateway:**



**Adding a key safe without a reader to an Eco Keypad kit with reader installed.**



#### **H) INSTALLATION OF AN INTRABOX KEY SAFE**

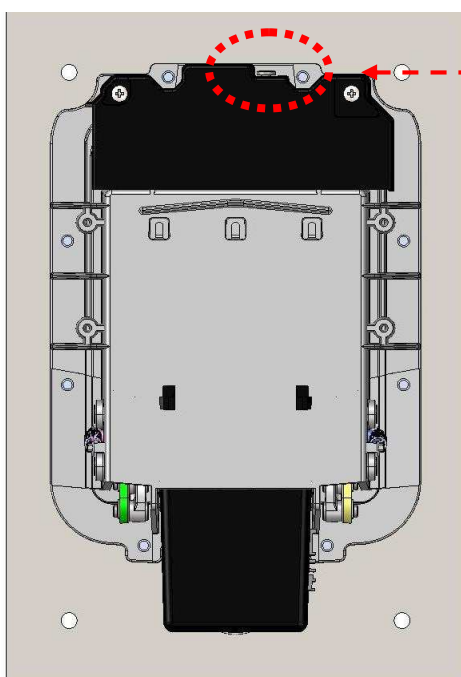


For further details, please consult the diagram EN-V234 - 0008 - XX

### ***POST-INSTALLATION CHECKS***

Make the following checks once you have completed the installation:

- ✓ Does the read head react when a fob is passed over it?
- ✓ When the key safe is opened, do you hear a confirmation alert?
- ✓ Does the key safe open and close?



To mechanically open the key safe  
⇒ **Use the latch**

- ✓ Does the 3G or GPRS have a good reception?

## ***BREAKDOWN DIAGNOSTIC***

<b><i>What is a breakdown?</i></b>	<b><i>What caused the breakdown?</i></b>	<b><i>How to solve the problem!</i></b>
The reader's LED does not light up	<ul style="list-style-type: none"> <li>- Reader covered</li> <li>- No power</li> <li>- Incorrect + / - wiring</li> </ul>	<ul style="list-style-type: none"> <li>- Check connections to the read head</li> <li>- Check wiring</li> </ul>
The key safe door will not open	<ul style="list-style-type: none"> <li>- Incorrect settings used on website</li> <li>- Incorrect D+ / D- wiring</li> <li>- Fob reading time</li> <li>- The fob is a resident fob</li> </ul>	<ul style="list-style-type: none"> <li>- Check settings on website</li> <li>- Check wiring/settings</li> <li>- Hold the fob in front of the reader for over 5 seconds</li> <li>- Program a fob</li> </ul>

☎ Contact our technical support on +33 (0)251 655 184 ☎

## ***CERTIFICATE OF COMPLIANCE***

### ***1) STANDARDS:***

#### **EC Standards:**

The key safe complies with directive **R&TTE 1999/5/EC**: applicable electrical safety standard **EN 60950(2001)**, applicable EMC standard **EN 301 489-3(2002)**, applicable radio standard **EN 300 330-2(2001)**.

The key safe complies with telephone network standards **TS-103 021** and **TR-103 000**.

#### **Wiring:**

The control unit's wiring must not be installed near other sources of energy (mains power, for example).

#### **Guaranteed operating conditions:**

The key safe is guaranteed to work at temperatures of between **-20°C and +70°C** and in relative humidity that does not exceed 70%.



#### **Recycling at end of life:**

The key safe and its accessories must not be disposed of with unsorted waste, but must be collected for recycling as Electrical and Electronic Waste.