

Connection of the EEN-ANTD-EDGE remote aerial to the GSM EEN-MEDGE unit or Visio EEN-PIV3G panel

Overview:

⚠ The remote aerial is not required. Install it in the case: ⚠

- **Of a perturbed environment.**
- **Aspecific layout of surrounding buildings.**
- **To cancel the Faraday cage effect.**

EC standards:

The remote aerial complies with GSM (Radio spectrum) standards EN 301 511 ; 3GPP 51.010-1 and with EMC standards EN 301 489-3 and EN 301 489-7.

Operating warranty

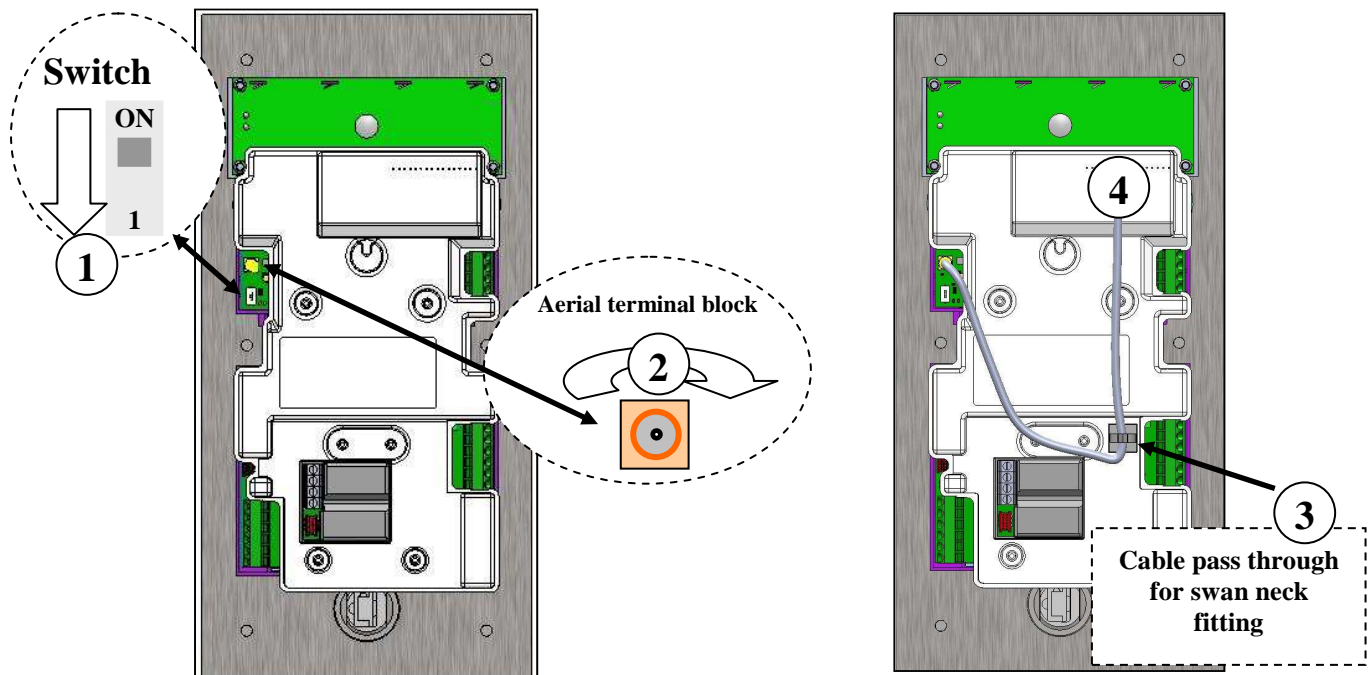
The remote aerial is guaranteed to operate within a temperature range of between -35°C and +85°C in which relative humidity does not exceed 70%.

End of life product recycling:



The remote aerial and its accessories must not be disposed of with unsorted municipal waste, but must follow the WEEE (Waste Electrical and Electronic Equipment) collection and recycling channel.

Connection of the EEN-PIV3G-V2:



1. Trip the switch downwards.

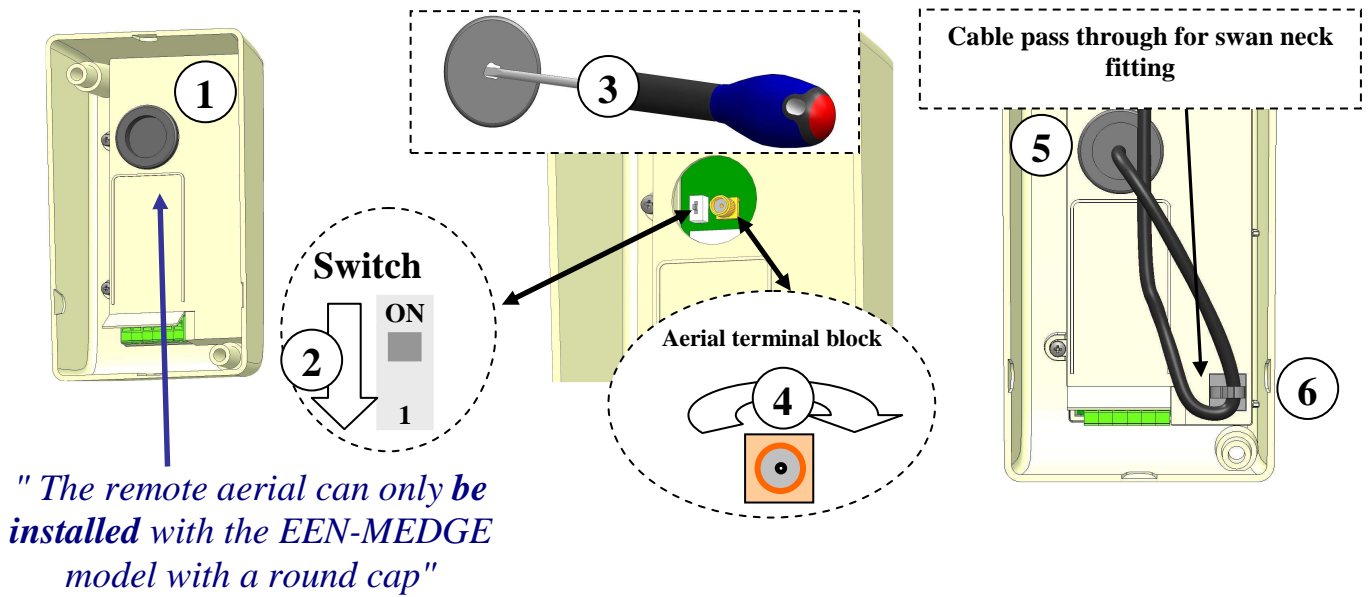
"DO NOT USE A SCREWDRIVER!"

2. Screw the aerial cable to the card's aerial terminal block.

3. Fit the cable pass through supplied in the remote aerial kit as indicated on the diagram.

4. Thread the cable through the cable pass through.

EEN-MEDGE connection:

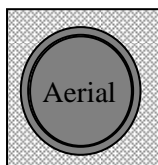


1. **Prise out** the protective cap.
2. **Trip** the switch downwards.
"DO NOT USE A SCREWDRIVER!"
3. **Make** a hole in the cap with a screwdriver and pass the aerial cable through.
4. **Screw** the aerial cable to the card's aerial terminal block.
5. **Refit** the cap.
6. **Use the cable pass through** supplied in the remote aerial kit.

General instructions



Fit the aerial to a metal support for optimum reception.



- Install the aerial high **up** and **outside**.
- The aerial must not be installed on a ceiling but **in a vertical position**.
- Prefer **swan neck** cabling.



Or

