

COPYRIGHT © Hangzhou EZVIZ Software Co., Ltd. ALL RIGHTS RESERVED.

Any and all information, including, among others, wordings, pictures, graphs are the properties of Hangzhou EZVIZ Software Co., Ltd. (hereinafter referred to as “EZVIZ”). This user manual (hereinafter referred to as “the Manual”) cannot be reproduced, changed, translated, or distributed, partially or wholly, by any means, without the prior written permission of EZVIZ. Unless otherwise stipulated, EZVIZ does not make any warranties, guarantees or representations, express or implied, regarding to the Manual.


#### **About this Manual**

The Manual includes instructions for using and managing the product. Pictures, charts, images and all other information hereinafter are for description and explanation only. The information contained in the Manual is subject to change, without notice, due to firmware updates or other reasons. Please find the latest version in the EZVIZ™ website (<http://www.ezviz.com>).

#### **Revision Record**

New release – January, 2023

#### **Trademarks Acknowledgement**

EZVIZ™, ™, and other EZVIZ's trademarks and logos are the properties of EZVIZ in various jurisdictions. Other trademarks and logos mentioned below are the properties of their respective owners.

#### **Legal Disclaimer**

TO THE MAXIMUM EXTENT PERMITTED BY APPLICABLE LAW, THE PRODUCT DESCRIBED, WITH ITS HARDWARE, SOFTWARE AND FIRMWARE, IS PROVIDED “AS IS”, WITH ALL FAULTS AND ERRORS, AND EZVIZ MAKES NO WARRANTIES, EXPRESS OR IMPLIED, INCLUDING WITHOUT LIMITATION, MERCHANTABILITY, SATISFACTORY QUALITY, FITNESS FOR A PARTICULAR PURPOSE, AND NON-INFRINGEMENT OF THIRD PARTY. IN NO EVENT WILL EZVIZ, ITS DIRECTORS, OFFICERS, EMPLOYEES, OR AGENTS BE LIABLE TO YOU FOR ANY SPECIAL, CONSEQUENTIAL, INCIDENTAL, OR INDIRECT DAMAGES, INCLUDING, AMONG OTHERS, DAMAGES FOR LOSS OF BUSINESS PROFITS, BUSINESS INTERRUPTION, OR LOSS OF DATA OR DOCUMENTATION, IN CONNECTION WITH THE USE OF THIS PRODUCT, EVEN IF EZVIZ HAS BEEN ADVISED OF THE POSSIBILITY OF SUCH DAMAGES.

TO THE MAXIMUM EXTENT PERMITTED BY APPLICABLE LAW, IN NO EVENT SHALL EZVIZ'S TOTAL LIABILITY FOR ALL DAMAGES EXCEED THE ORIGINAL PURCHASE PRICE OF THE PRODUCT.

EZVIZ DOES NOT UNDERTAKE ANY LIABILITY FOR PERSONAL INJURY OR PROPERTY DAMAGE AS THE RESULT OF PRODUCT INTERRUPTION OR SERVICE TERMINATION CAUSED BY: A) IMPROPER INSTALLATION OR USAGE OTHER THAN AS REQUESTED; B) THE PROTECTION OF NATIONAL OR PUBLIC INTERESTS; C) FORCE MAJEURE; D) YOURSELF OR THE THIRD PARTY, INCLUDING WITHOUT LIMITATION, USING ANY THIRD PARTY'S PRODUCTS, SOFTWARE, APPLICATIONS, AND AMONG OTHERS.

REGARDING TO THE PRODUCT WITH INTERNET ACCESS, THE USE OF PRODUCT SHALL BE WHOLLY AT YOUR OWN RISKS. EZVIZ SHALL NOT TAKE ANY RESPONSIBILITIES FOR ABNORMAL OPERATION, PRIVACY LEAKAGE OR OTHER DAMAGES RESULTING FROM CYBER ATTACK, HACKER ATTACK, VIRUS INSPECTION, OR OTHER INTERNET SECURITY RISKS; HOWEVER, EZVIZ WILL PROVIDE TIMELY TECHNICAL SUPPORT IF REQUIRED. SURVEILLANCE LAWS AND DATA PROTECTION LAWS VARY BY JURISDICTION. PLEASE CHECK ALL RELEVANT LAWS IN YOUR JURISDICTION BEFORE USING THIS PRODUCT IN ORDER TO ENSURE THAT YOUR USE CONFORMS TO THE APPLICABLE LAW. EZVIZ SHALL NOT BE LIABLE IN THE EVENT THAT THIS PRODUCT IS USED WITH ILLEGITIMATE PURPOSES.

IN THE EVENT OF ANY CONFLICTS BETWEEN THE ABOVE AND THE APPLICABLE LAW, THE LATTER PREVAILS.

# Table of Contents

<b>Attention</b> .....	<b>1</b>
<b>Box Content</b> .....	<b>1</b>
<b>Overview</b> .....	<b>2</b>
<b>Get the EZVIZ App</b> .....	<b>3</b>
<b>Setup</b> .....	<b>3</b>
<b>Installation</b> .....	<b>3</b>
1. Install the Micro SD Card (Optional).....	3
2. Install the peephole .....	4
<b>Power on</b> .....	<b>6</b>
<b>Add to EZVIZ App</b> .....	<b>7</b>
<b>Charge the Panel</b> .....	<b>7</b>
<b>Restore to Factory Settings</b> .....	<b>7</b>
<b>Live View</b> .....	<b>8</b>
<b>Settings</b> .....	<b>9</b>
<b>EZVIZ Connect</b> .....	<b>10</b>
1. Use Amazon Alexa.....	10
2. Use Google Assistant .....	10
<b>Initiatives on the Use of Video Products</b> .....	<b>11</b>
<b>Appendix</b> .....	<b>12</b>
1. Rechargeable Lithium ion Battery .....	12
2. INFORMATION FOR PRIVATE HOUSEHOLDS .....	12

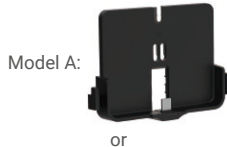
## Attention

- Do not expose the camera to the harsh environment like high temperature, humid, salt mist or rain, otherwise, the device may be damaged.
- Do not press the sensor or lens of the camera, otherwise, the device may be damaged.
- Do not pull the wire of the camera hard, and protect yourself from being cut by the wire. Damage to the wire due to inappropriate operation is not included in the warranty.
- Use the exclusively power adapter to charge the panel, otherwise, the system may be damaged.

## Box Content



Panel (x1)



or



Mounting Base (x1)



or



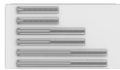
Camera (x1)



Buckle (x1)



\* Base Cover (x1)



Screws (x6)



Power Cord (x1)



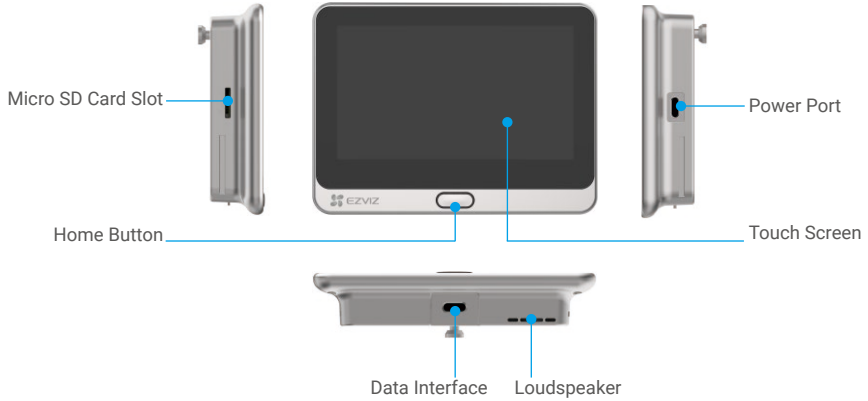
Regulatory Information (x2)



Quick Start Guide (x1)

- i** \* The base cover is only sold together with model A, it's not included with model B. Model A and Model B differ only in the mounting structure. Since they provide the same features and performance, you can use either Model A or Model B normally. The appearance of product and accessories are subject to the one you have bought.

# Overview Panel



Name	Description
Home Button	<ul style="list-style-type: none"><li>• Hold the Home Button for 3 to 5 seconds to power up or off the device.</li><li>• Press the Home Button to light up or off the screen.</li></ul>

# Camera



1 Do not block the sensors.

## Mounting Base

Model A



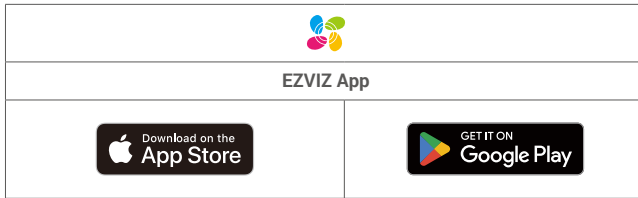
Model B



**i** Hook is for hanging portable charger.

## Get the EZVIZ App

- Connect your mobile phone to Wi-Fi using your 2.4GHz network (suggested).
- Download and install the EZVIZ app by searching "EZVIZ" in the App Store or Google Play™.
- Launch the app and register an EZVIZ user account.



**i** If you have already used the app, please make sure that it is the latest version. To find out if an update is available, go to the app store and search for EZVIZ.

## Setup

**Follow the steps to set your peephole:**

1. Install your peephole and power on.
2. Log in to your EZVIZ app user account.
3. Connect your peephole to the Internet.
4. Add your peephole to your EZVIZ account.

## Installation

### 1. Install the Micro SD Card (Optional)

- Insert the micro SD card (sold separately) into the card slot as shown in the figure below.



- In the EZVIZ app, tap the **Storage Status** in the Device Settings interface to check the SD card status.
- If the memory card status displays as **Uninitialized**, tap to initialize it. The status will then change to **Normal** and it can store videos.

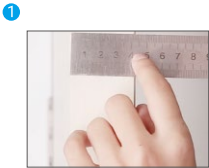
## 2. Install the peephole

- i** This document provides two mounting methods for different appearance, please choose the corresponding mounting method according to the product you purchased.

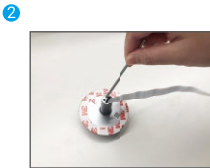
### Model A

If you already have a peephole, install the device in the same place. If not, please drill a hole of diameter about 14mm (no more than 45mm) and about 145cm distance from the ground to have a good viewing effect.

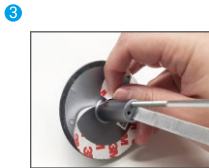
Measure the door's thickness and select the appropriate screws.



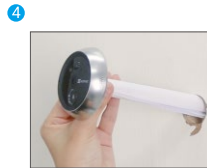
Thickness	Screw
35 to 60mm	
60 to 85mm	
85 to 105mm	



Turn the screws into the back of camera.



Tear off the release paper.



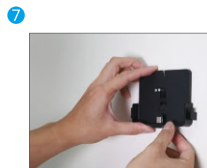
Pass screws and wire through the door. You can roll up the paper to help.



Adjust camera's position and push it close to the door gently.



Take out the base, plug the connector into the slot on the bottom of the base and put the base cover on.



Pass screws through the mounting holes.

8



Adjust the mounting base's position and tighten the screws.

9



Put the wires in the groove and insert the buckle.

10



Slide the panel into the mounting base.

11



Installation completed. Remove the sticker.

## Model B

If you already have a peephole, install the device in the same place. If not, please drill a hole of diameter about 16.5mm (no more than 45mm) and about 145cm distance from the ground to have a good viewing effect.

Measure the door's thickness and select the appropriate screws.

1



Thickness

Screw

35 to 60mm



60 to 85mm



85 to 105mm



2



Turn the screws into the back of camera.

3



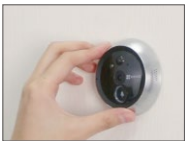
Tear off the release paper.

4



Pass screws and wire through the door. You can roll up the paper to help.

5



Adjust camera's position and push it close to the door gently.

6



Take out the base, and plug the connector into the slot on the bottom of the base.

7



Pass screws through the mounting holes.

8



Adjust the mounting base's position and tighten the screws.

9



Put the wires in the groove and insert the buckle.

10



Slide the panel into the mounting base.

11



Installation completed. Remove the sticker.

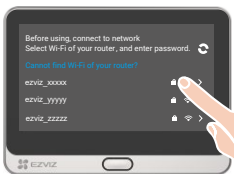
## Power on



1 Hold the power button for 3 to 5 seconds to power on the panel.



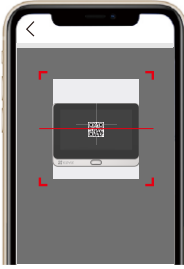
2 Tap the touch screen to choose your language.



3 Follow the wizard to select your Wi-Fi and enter password.



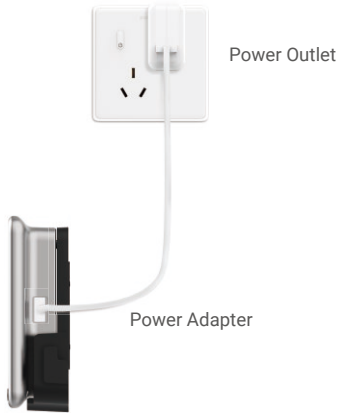
## Add to EZVIZ App



- Log in the EZVIZ app.
- On the Home screen, tap "+" on the upper-right corner to go to the scan QR code page.
- Scan the QR code.

**i** If you failed to get the QR code or want to reconfigure Wi-Fi, please tap **Settings** -> **Firmware** on the touch screen to see QR code.

## Charge the Panel

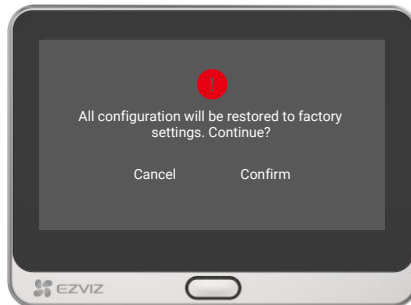


Connect the panel with the power outlet via power adapter (5V 2A, sold separately).

- i** Do not charge through the interface at the bottom.
- You can also charge the panel via portable charger and hang it on the hook.
- Please do not charge the device when the temperature exceeds 45 degrees or below 0 degrees.

## Restore to Factory Settings

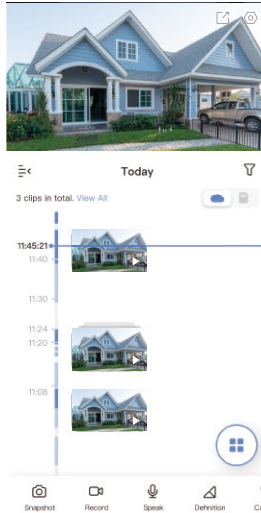
Tap **Settings** -> **Firmware** -> **Default** and confirm to restore the device to factory settings.



# Live View

**i** The app interface may be different due to version update, and the interface of the app you installed on your phone shall prevail.

Launch the EZVIZ app, tap **Live View** button, you can view and listen to a live feed, take snapshots, record videos, and choose video definition as needed.




**1** Swipe left and right across the screen to see more icons.

Icon	Description
	Share. Share your device.
	Settings. View or change the device settings.
	Snapshot. Take a snapshot.
	Record. Manually start/stop recording.
	Speak. Start using talk and listen.
	Definition. Select video resolution from Ultra HD, Hi-Def or Standard.
	Call Log. View call logs.
	Multi-screen Live. Tap to select live view window layout.

**i** Please refer to the actual interface for specific information.

# Settings

In the settings page, you can set the parameters of the device.

Parameter	Description
Name	Customize the name of your device.
Working Mode	<ul style="list-style-type: none"><li>• User Mode: Customize parameters like detection sensitivity and loitering duration</li><li>• Performance Mode: Under this mode, the device performance will be improved, but the power consumption will be increased.</li><li>• Power Saving Mode: Adjust the sensitivity and other parameters to extend battery life.</li><li>• Super Power-saving: Sleep Mode is on. Active live view can wake up the camera.</li><li>• Configure Working Mode: Customize the working mode in different periods.</li></ul>
Intelligent Detection	<p>You can customize the detection notification by changing the value of detection sensitivity. The higher sensitivity is, the easier people farther to the device can be detected.</p> <ul style="list-style-type: none"><li>• Basic Detection(Required)<ul style="list-style-type: none"><li>• PIR Infrared Detection: Higer sensitivity, farther detectable distance.</li><li>• Human Shape Detection: Higer sensitivity, farther detectable distance.</li></ul></li><li>• Advanced Detection<ul style="list-style-type: none"><li>• Loitering detection: when enabled, if people keep loitering around the doorway for longer than the period you have set up, alarms will be triggered. This function is used to avoid loitering.</li></ul></li></ul> <p> Devices will alert based on the selected mode, including device-side alerts and App-side message notifications.</p>
Notification	You can set the notification from the device-side and app-side.
Audio	When disabled, both live view and record videos will not have audio.
Image	<ul style="list-style-type: none"><li>• Auto(Recommended): Auto-Switch Day/Night Mode.</li><li>• Day and Night Switch Sensitivity.</li><li>• Enforcing Day Mode: IR mode stays off</li><li>• Enforcing Night Node: IR mode stays on, with clear images in dark environment.</li></ul>
Light	When disabled, the doorbell indicator will be off.
Battery	You can see the battery capacity.
Cloud Storage	You can subscribe and manage the cloud storage.
Record List	You can see the device storage status, include cloud storage and memory card.
Security Settings	<ul style="list-style-type: none"><li>• Video Encryption: When enabled, your videos will be encrypted.</li><li>• Change Encryption Password: You can change your password.</li></ul>
Network	<ul style="list-style-type: none"><li>• You can see the Wi-Fi that the device has connected to, and you can tap to change to another Wi-Fi.</li><li>• Static DNS: If enabled, you can customize the DNS address.</li><li>• Wi-Fi Sleep Mode: You can choose the Wi-Fi Sleep mode.<ul style="list-style-type: none"><li>• Low Power Mode</li><li>• Ultra-Low Power Mode</li></ul></li></ul>
Device Information	You can see the device information here.
Share the Device	Enter an email address or phone number to invite and grant device permissions to a family member or guest.
Delete Device	Tap to delete the camera from your EZVIZ account.

## 1. Use Amazon Alexa

These instructions will enable you to control your EZVIZ devices with Amazon Alexa. If you run into any difficulties during the process, please refer to **Troubleshooting**.

### Before you start, make sure that:

1. EZVIZ devices are connected to the EZVIZ app.
2. In the EZVIZ app, turn off the "Image Encryption" in the Device Settings page.
3. You have an Alexa-enabled device (i.e Echo Spot, Echo-Show, All-new Echo-Show, Fire TV (all generations), Fire TV stick (second generation only), or Fire TV Edition smart TVs).
4. The Amazon Alexa app is already installed on your smart device, and you have created an account.

### To Control EZVIZ devices with Amazon Alexa:

1. Open the Alexa app and select "Skills and Games" from the menu.
2. On the Skills and Games screen, search for "EZVIZ", and you will find "EZVIZ" skills.
3. Select your EZVIZ device's skill, then tap **ENABLE TO USE**.
4. Enter your EZVIZ username and password, and tap **Sign in**.
5. Tap the **Authorize** button to authorize Alexa to access your EZVIZ account, so that Alexa can control your EZVIZ devices.
6. You will see "EZVIZ has been successfully linked", then tap **DISCOVER DEVICES** to allow Alexa to discover all your EZVIZ devices.
7. Go back to Alexa app menu and select "Devices", and under devices you will see all your EZVIZ devices.

### Voice Command

Discover a new smart device via the "Smart Home" menu in the Alexa app or the Alexa Voice Control function. Once the device is found, you can control it with your voice. Speak simple commands to Alexa.

- i** Your device's name for example: "show xxxx camera," can be changed in the EZVIZ app. Each time you change the name of the device, you will need to discover the device again to update the name.

### Troubleshooting

#### What should I do if Alexa fails to discover my device?

Check if there are any Internet connecting problems.  
Try to restart the smart device and re-discover the device on Alexa.

#### Why the device's status is "Offline" on Alexa?

Your device might have been disconnected from the network. Restart the smart device and re-discover on Alexa.  
Check if your router is connected to the Internet and try again.

- i** For details about countries where Amazon Alexa is available, see Amazon Alexa's official website.

## 2. Use Google Assistant

With the Google Assistant, you can activate your EZVIZ device and watch live by speaking Google Assistant voice commands.

### The following devices and apps are required:

1. A functional EZVIZ app.
2. In the EZVIZ app, turn off the "Image Encryption" and turn on the "Audio" in the Device Settings page.
3. A TV with functional Chromecast connecting to it.
4. The Google Assistant app on your phone.

### To get started, follow the steps below:

1. Set up the EZVIZ device and make sure it works properly on the app.
2. Download the Google Home app from the App Store or Google Play Store™ and log into your Google account.
3. On the Myhome screen, tap "+" on the upper-left corner, and select "Set up device" from the menu list to go to the Set up interface.

4. Tap **Works with Google**, and search for "EZVIZ", where you will find "EZVIZ" skills.
5. Enter your EZVIZ username and password, and tap **Sign in**.
6. Tap the **Authorize** button to authorize Google to access your EZVIZ account, so that Google can control your EZVIZ devices.
7. Tap **Return to app**.
8. Follow the above steps to complete the authorization. When synchronization is completed, EZVIZ service will be listed under your list of services. To see a list of compatible devices under your EZVIZ account, tap on the EZVIZ service icon.
9. Now try some commands. Use the name of the camera that you created when you set up the system.

Users can manage devices as a single entity or in a group. Adding devices to a room allows users to control a group of devices at the same time using one command.

See the link for more information:

<https://support.google.com/googlehome/answer/7029485?co=GENIE.Platform%3DAndroid&hl=en>

 For additional information about the device, please refer to [www.ezviz.eu](http://www.ezviz.eu).

## Initiatives on the Use of Video Products

Thank you for choosing EZVIZ products.

Technology affects every aspect of our life. As a high-tech company, we are increasingly aware of the role technology plays in improving business efficiency and quality of life, but at the same time, the potential harm of its improper usage. For example, video products are capable of recording real, complete and clear images. This provides a high value in retrospect and preserving real-time facts. However, it may also result in the infringement of a third party's legitimate rights and interests if improper distribution, use and/or processing of video data takes place. With the philosophy of "Technology for the Good", EZVIZ requests that every end user of video technology and video products shall comply with all the applicable laws and regulations, as well as ethical customs, aiming to jointly create a better community.

Please read the following initiatives carefully:

1. Everyone has a reasonable expectation of privacy, and the installation of video products should not be in conflict with this reasonable expectation. Therefore, a warning notice shall be given in a reasonable and effective manner and clarify the monitoring range, when installing video products in public areas. For non-public areas, a third party's rights and interests shall be evaluated when installing video products, including but not limited to, installing video products only after obtaining the consent of the stakeholders, and not installing highly-invisible video products.

2. The purpose of video products is to record real activities within a specific time and space and under specific conditions. Therefore, every user shall first reasonably define his/her own rights in such specific scope, in order to avoid infringing on a third party's portraits, privacy or other legitimate rights.

3. During the use of video products, video image data derived from real scenes will continue to be generated, including a large amount of biological data (such as facial images), and the data could be further applied or reprocessed. Video products themselves could not distinguish good from bad regarding how to use the data based solely on the images captured by the video products. The result of data usage depends on the method and purpose of use of the data controllers. Therefore, data controllers shall not only comply with all the applicable laws and regulations and other normative requirements, but also respect international norms, social morality, good morals, common practices and other non-mandatory requirements, and respect individual privacy, portrait and other rights and interests.

4. The rights, values and other demands of various stakeholders should always be considered when processing video data that is continuously generated by video products. In this regard, product security and data security are extremely crucial. Therefore, every end user and data controller, shall undertake all reasonable and necessary measures to ensure data security and avoid data leakage, improper disclosure and improper use, including but not limited to, setting up access control, selecting a suitable network environment (the Internet or Intranet) where video products are connected, establishing and constantly optimizing network security.

5. Video products have made great contributions to the improvement of social security around the world, and we believe that these products will also play an active role in more aspects of social life. Any abuse of video products in violation of human rights or leading to criminal activities are contrary to the original intent of technological innovation and product development. Therefore, each user shall establish an evaluation and tracking mechanism of their product application to ensure that every product is used in a proper and reasonable manner and with good faith.

# Appendix

## 1. Rechargeable Lithium ion Battery

1. The battery type of the device: Portable battery.
2. The battery of this device is non-removable, which is risky to remove.

Chemical Composition	Chemical Formula	CAS No.	Weight (%)
Lithium Cobalt Oxide	Co	12190-79-3	44.9%
Nanotubes	CNT	308068-56-6	0.40%
Polyvinylidene fluoride	PVDF	24937-79-9	0.58%
Aluminum Foil	AL	7429-90-5	4.21%
Copper Foil	Cu	7440-50-8	7.12%
Graphite	C	7782-42-5	24.62%
Super P	S-P	7782-42-5	0.27%
Styrene Butadiene rubber	SBR	61789-96-6	0.91%
Carboxymethylcellulose Sodium	CMC	9000/11/7	0.40%
Lead	Pb	7439-92-1	Not Detected
Cadmium	Cd	7440-43-9	Not Detected
Mercury	Hg	7439-97-36	Not Detected

## 2. INFORMATION FOR PRIVATE HOUSEHOLDS

1. Separate collection of waste equipment: Electrical and electronic equipment that has become waste is referred to as waste equipment. Owners of waste equipment must dispose of it separately from unsorted municipal waste. In particular, waste equipment does not belong in household waste, but in special collection and return systems.

2. Batteries and rechargeable batteries as well as lamps: Owners of waste equipment shall, as a rule, separate waste batteries and rechargeable batteries that are not enclosed in the waste equipment, which can be removed from the waste equipment without being destroyed, from the waste equipment before handing them in at a collection point. This does not apply if waste equipment is prepared for reuse with the participation of a public waste management authority.

3. Options for returning waste equipment: Owners of waste equipment from private households can return it free of charge to the collection points of the public waste management authorities or to the take-back points set up by manufacturers or distributors within the meaning of the Electrical and Electronics Equipment Law. Stores with a sales area of at least 400 m<sup>2</sup> for electrical and electronic equipment and those grocery stores with a total sales area of at least 800 m<sup>2</sup> that offer electrical and electronic equipment several times a year or on a permanent basis and make it available in the market are required to take it back. This also applies in the case of distribution using means of distance communication, if the storage and shipping areas for electrical and electronic equipment are at least 400 m<sup>2</sup> or the total storage and shipping areas are at least 800 m<sup>2</sup>. Distributors shall, in principle, ensure take-back by providing suitable return facilities at a reasonable distance from the respective end user. The possibility of returning waste equipment free of charge exists for distributors who are obliged to take it back, among other things, if a new similar device that essentially fulfills the same functions is delivered to an end user.

4. Privacy Notice: Waste equipment often contains sensitive personal data. This applies in particular to devices of information and telecommunications technology such as computers and smartphones. In your own interest, please note that each end user is responsible for deleting the data on the waste equipment to be disposed of.

5. Meaning of the symbol "crossed-out wheelee bin": The symbol of a crossed-out wheelee bin regularly depicted on electrical and electronic equipment indicates that the respective device is to be collected separately from unsorted municipal waste at the end of its service life.