

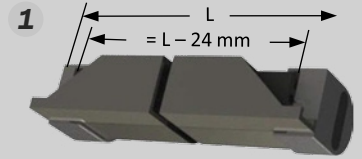
# Safety Contact Edge GF Series

## Assembly Instructions

Safety-contact-edges may only be manufactured and installed by authorised persons.

### 1. Cutting the safety-contact-edge

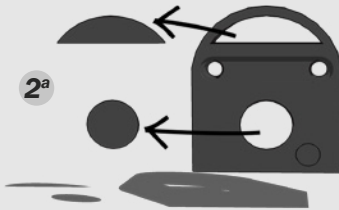
The safety-contact-edge is cut 24mm shorter than the final length dimension to allow for the length of the end caps on each end. Make sure that the edge is cut clean and straight using the approved LOWE cutting tool **ONLY**.



### 2. Preparing end caps

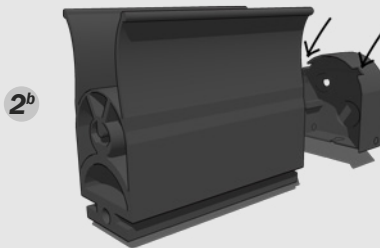
#### a) Water drain pipes

For installations in contact with water, it is necessary to remove water drain plugs. If the edge is to be mounted horizontally, remove drain plugs from both ends. If the edge is mounted vertically, just remove the lower drain plug.



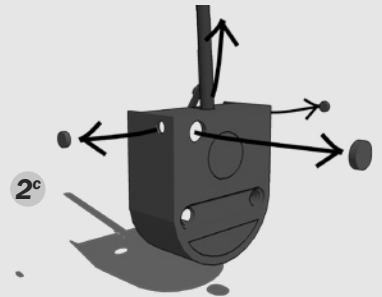
#### b) Notch for the sealing lip

For TLL & TLA profiles, remove a notch from the end cap to allow the sealing flaps to protrude through the cap.



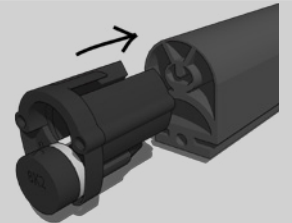
#### c) Connection cable.

Choose desired cable exit of end cap. Cut out the appropriate mark using a small cutting tool.



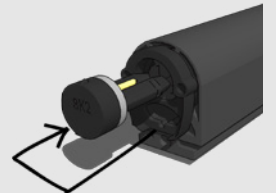
### 3. Insert lock cap

Push in the lock cap including the held plug into the hollow spaces surrounding the switching chamber and push it tight to the cut surface of the safety-contact-edge.



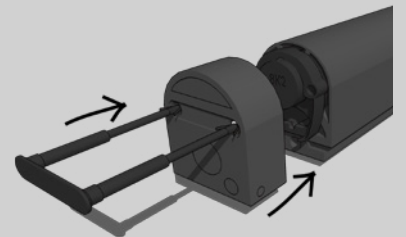
### 4. Insert the contact plug

Insert the plug (held by the lock cap) into the electrical switching chamber of the safety-contact-edge. Make sure that the plug is pressed in tightly until the upper notch of the plug fits closely to the lock cap



### 5. Put on end caps

Place the end cap onto the edge and fasten it, by pushing the fixation clip into the given space until it clicks into place. For bigger contact edges an additional fixation clip is used to fasten the caps.



### 6. Electrical testing of the safety-contact-edge

Measure the contact edge with a multimeter. In rest position, the resistance value has to be  $8,2 \text{ k}\Omega \pm 500 \Omega$  (7,7 - 8,7 k $\Omega$ ). When edge is activated, the resistance should not exceed 500 k $\Omega$ .



### 7. Cutting the mounting rail

The aluminium mounting rail has to be as long as the final dimension of the contact edge.