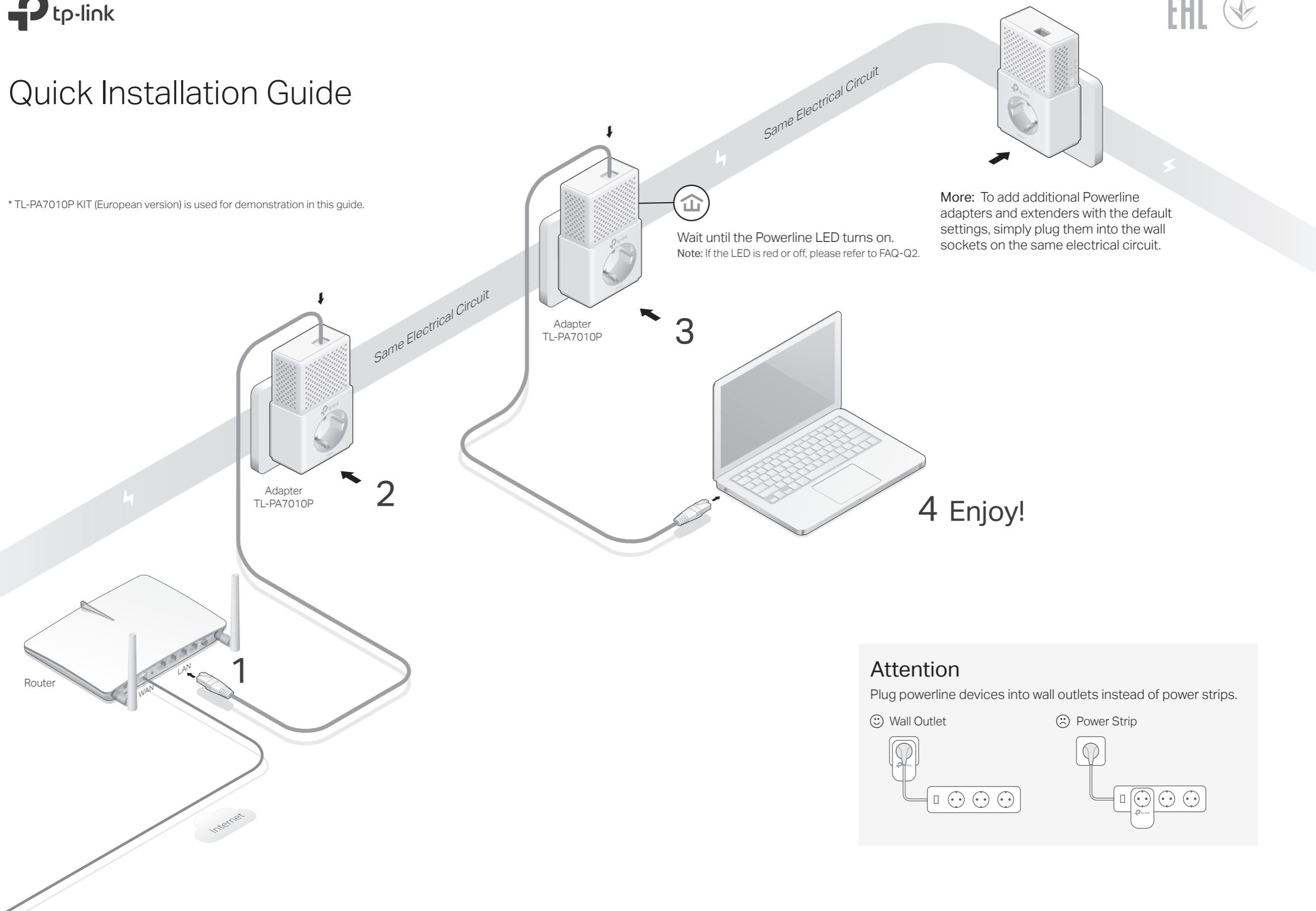


# Quick Installation Guide

\* TL-PA7010P KIT (European version) is used for demonstration in this guide.



Wait until the Powerline LED turns on.  
Note: If the LED is red or off, please refer to FAQ-Q2.

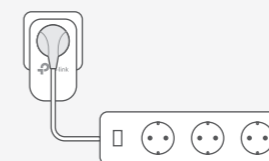
**More:** To add additional Powerline adapters and extenders with the default settings, simply plug them into the wall sockets on the same electrical circuit.

**4 Enjoy!**

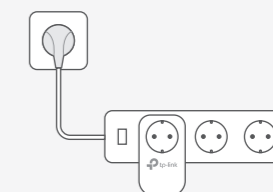
## Attention

Plug powerline devices into wall outlets instead of power strips.

☺ Wall Outlet



☹ Power Strip






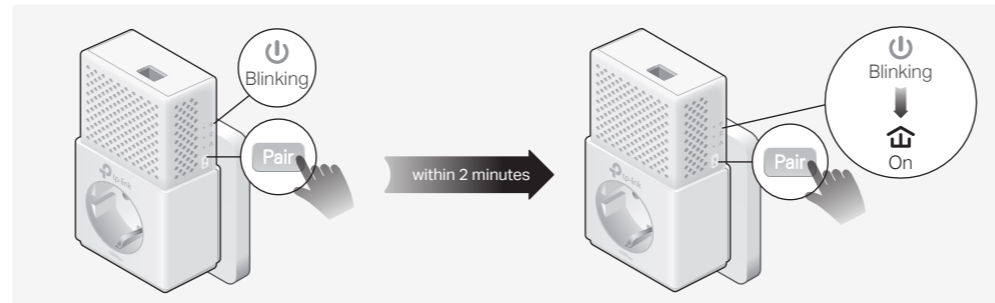
# Set Up a Secure Powerline Network by Pairing (Recommended)

You can create or join a secure powerline network using the Pair button on two devices at a time.

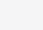
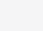
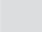
**Tip:** We recommend that you plug in the powerline devices near each other when pairing.

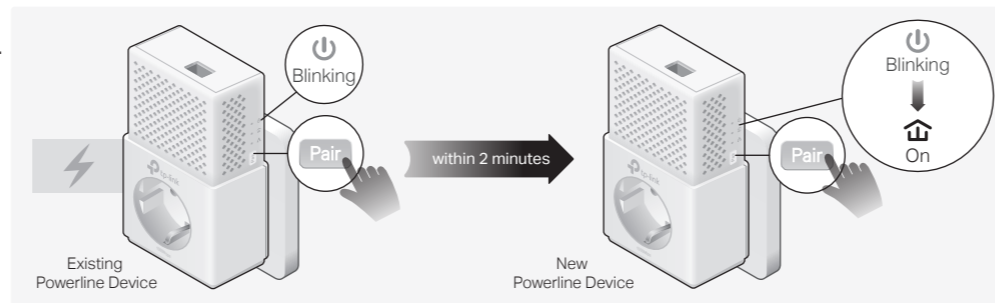
## To create a secure powerline network:

- 1 Press the Pair button on one of the powerline devices for 1 second. Its Power LED  starts blinking.  
Note: If the Power LED does not blink, press the Pair button again.
- 2 Within 2 minutes, press the Pair button on another device for 1 second. Its Power LED  starts blinking.
- 3 When the Powerline LED  turns on, it's done.

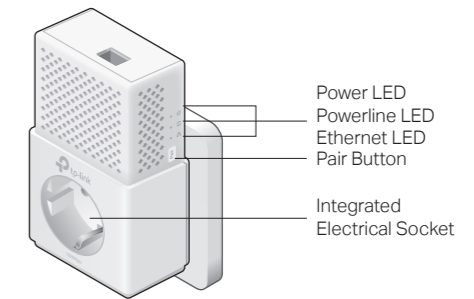





## To join an existing secure powerline network:

- 1 Press the Pair button on any of the existing powerline devices for 1 second. Its Power LED  starts blinking.  
Note: If the Power LED does not blink, press the Pair button again.
- 2 Within 2 minutes, press the Pair button on the new powerline adapter for 1 second. Its Power LED  starts blinking.
- 3 When the Powerline LED  turns on, it's done.



# Physical Appearance



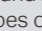
LED	STATUS	DESCRIPTION
 Power	On/Off Blinking	The powerline adapter is on or off. Once every second: Pairing is in process. Once every 3 seconds: Power-Saving Mode is on.*
	Yellow-green	The powerline adapter is in a location with a good signal strength.
 Powerline	Red Off	The powerline adapter is in a location with a poor signal strength. We recommend trying another wall socket. The powerline adapter is not connected to any powerline network.
 Ethernet	On/Off	The Ethernet port is connected or disconnected.

\* Five minutes after the device connected to the powerline adapter is turned off or inactive, the powerline adapter will automatically switch to Power-Saving Mode.

ITEM	DESCRIPTION
Pair Button	Press and hold for 1 second to set up or join a secure powerline network. Press and hold for more than 6 seconds to reset the powerline adapter.
Integrated Electrical Socket	Used as an electrical outlet expansion for power strip or household appliances. It can remove some electrical noise that might affect powerline performance.

# Frequently Asked Questions


## Q1. How do I reset my powerline adapter?

- A. With the powerline adapter plugged into an electrical outlet, press and hold the Pair button for more than 6 seconds until the Power LED  goes off momentarily and then comes back on.

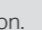
## Q2. What should I do if the Powerline LED is red or off?

- If the LED is red:
  - A. The powerline adapter is in a location with a poor signal strength. Try another wall socket.
- If the LED is off:
  - A1. Try another wall socket and make sure all powerline devices are on the same electrical circuit.
  - A2. Try to set up a powerline network by pairing. Refer to the section above for instructions.
  - A3. If the problem persists, contact our Technical Support.

## Q3. What should I do if there is no internet connection in my powerline network?

- A1. Make sure all powerline devices are on the same electrical circuit.
- A2. Make sure the Powerline LEDs  are lit on all of your powerline devices. If they are not, pair all devices again.
- A3. Make sure all devices are correctly and securely connected.
- A4. Check if you have an internet connection by connecting the computer directly to the modem or router.


## Q4. What should I do if a successfully-paired powerline device does not reconnect after it is relocated?

- A1. Try another socket and make sure it is on the same electrical circuit.
- A2. Try to pair the device again, and make sure the Powerline LED  is on.
- A3. Check for possible interference due to a washing machine, air conditioner or other household appliance that may be too close to one of the powerline devices. Plug the appliance into the integrated electrical socket to remove the electrical noise if your powerline device has an integrated electrical socket.

# Easy Management

## Using tpPLC utility for advanced configuration:

1. Visit <http://www.tp-link.com>, and search for your product.
2. Find and download the compatible version of utility on its Support page.
3. Install the utility and start your configuration.

 For technical support, the user guide and other information, please visit <http://www.tp-link.com/support>, or simply scan the QR code.



TP-Link hereby declares that this device is in compliance with the essential requirements and other relevant provisions of directives 2014/30/EU, 2014/35/EU, 2009/125/EC and 2011/65/EU. The original EU declaration of conformity may be found at <http://www.tp-link.com/en/ce>.