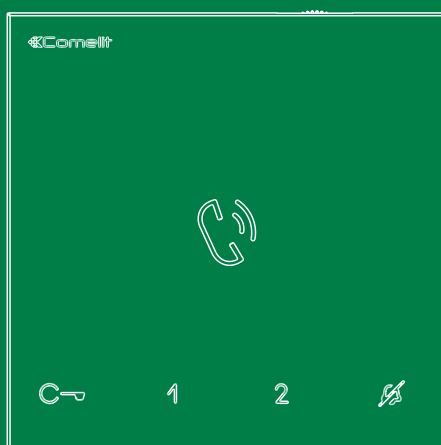


EN

TECHNICAL
MANUAL



Handsfree door entry phone
Mini 6750W, Mini 6751W

 **Comelit**[®]
Passion. Technology. Design.

Table of contents

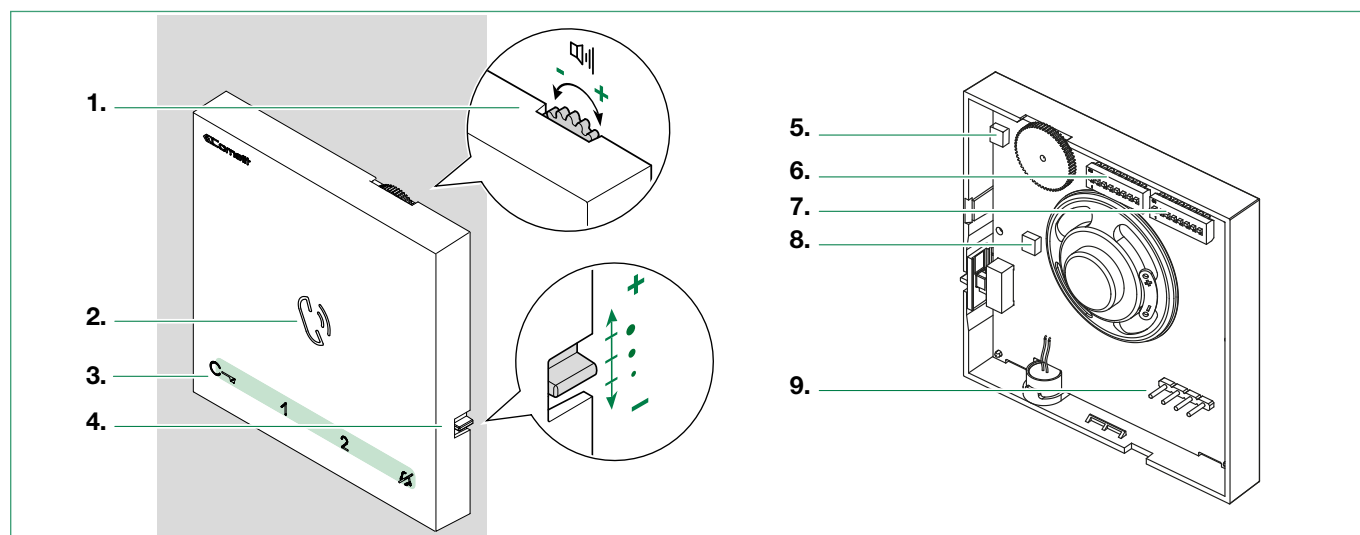


Description.....	3
Art. 6750W.....	3
Art. 6751W.....	4
Technical characteristics.....	5
Wall-mounted.....	6
Connections.....	8
Connection to the video entry riser and the floor door call button.....	8
Branched connection to the video entry system riser from the internal video unit.....	8
Connection to the door entry riser and the floor door call button	8
Touch-sensitive buttons	9
Description	9
Indicator LED.....	9
Answering an incoming call	9
Activation / deactivation of Automatic answer mode	9
Configuration	10
Touch-sensitive buttons	10
Legend.....	10
Basic configuration.....	10
Advanced configuration	11
Warning.....	11
Intercom calls: introduction	11
Selective intercom address: programming/cancellation.....	11
Intercom call: button programming.....	12
Intercom call: direct programming	13
Generic actuator, Addressable actuator: button programming	14
Other functions	15
Programming range	16
Changing the ringtone	16
Programming reset	17
System performance and layouts	17

Description

Art. 6750W

- Mini series handsfree door entry phone with full-duplex audio and integrated magnetic induction audio amplification system. With 5 touch sensitive buttons for audio key, lock release, actuator, switchboard call and Privacy functions, and door status indicator LED. Floor door call management as standard. Equipped with branch terminal art. 1214/2C.
- For use in **SimpleBusTop audio/video systems** with mixer art. 4888C, **Building Kit systems** with power supply unit art. 1210 or **Audio/Video Kits** with power supply unit art. 1209.



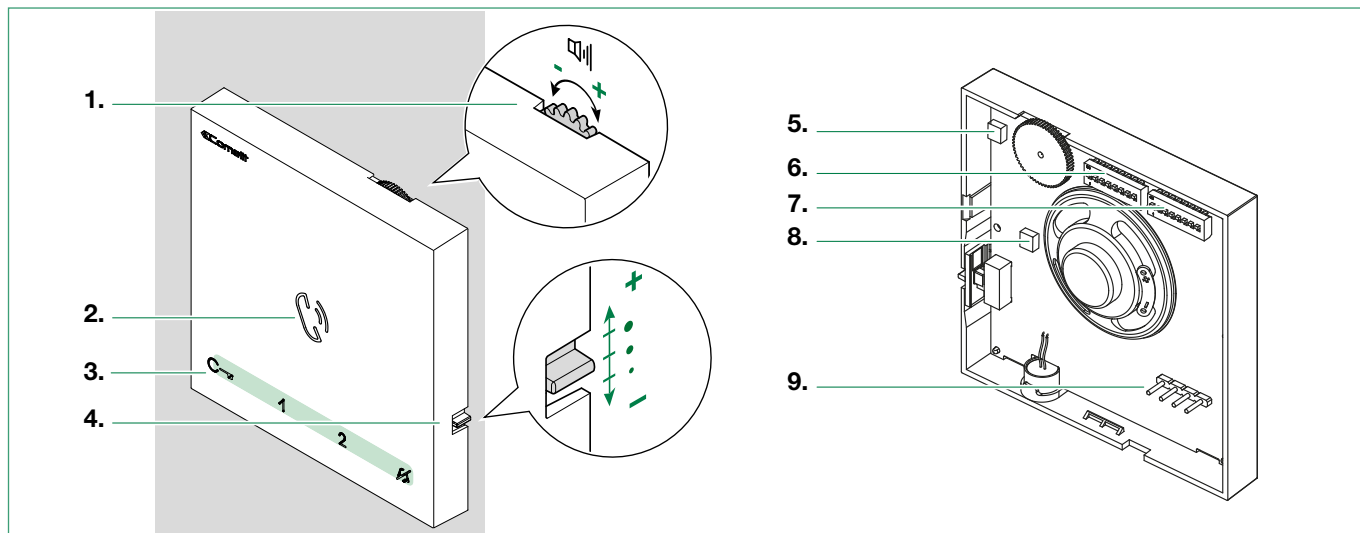
1. Loudspeaker volume control
 - ▶ turn clockwise to increase the value
2. Speaker and audio activation button
3. Touch-sensitive buttons
4. Call volume adjustment (high - medium - low)
5. Trimmer - Factory setting DO NOT CHANGE!
6. S1 ⬠ Microswitches for setting the user code (see [addressing table](#))
7. S2 ⊕ Microswitches for programming keys and functions
 - DIP 1-2-3-4 for button function programming
 - DIP 5-6 access to programming
 - DIP 7-8 not utilised
8. Trimmer - Factory setting DO NOT CHANGE!
9. Pin for securing terminal block

Terminal block for system connection

- LL** Bus line connection terminals
- CFP1 CFP2** Floor door call input

Art. 6751W

- Mini series door entry phone with full-duplex audio. With 5 touch sensitive buttons for audio key, lock release, actuator, switchboard call and Privacy functions, and door status indicator LED. Floor door call management as standard.
- For use in **SimpleBus2 audio systems** with power supply unit art. 1210.



1. Loudspeaker volume control

- ▶ turn clockwise to increase the value

2. Speaker and audio activation button

3. Touch-sensitive buttons

4. Call volume adjustment (high - medium - low)

5. Trimmer - Factory setting DO NOT CHANGE!

6. S1 ⬠ Microswitches for setting the user code (see [addressing table](#))

7. S2 ⊕ Microswitches for programming keys and functions

DIP 1-2-3-4 for button function programming

DIP 5-6 access to programming

DIP 7-8 not utilised

8. Trimmer - Factory setting DO NOT CHANGE!

9. Pin for securing terminal block

Terminal block for system connection

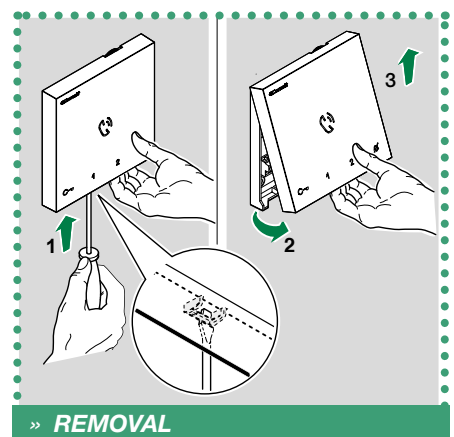
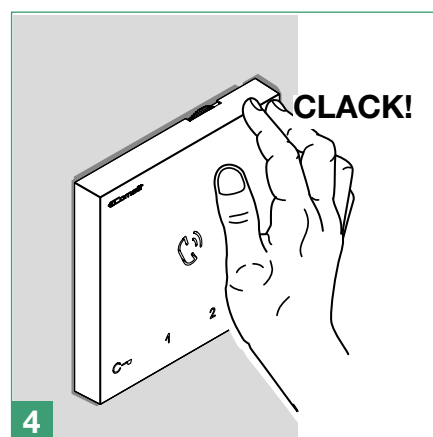
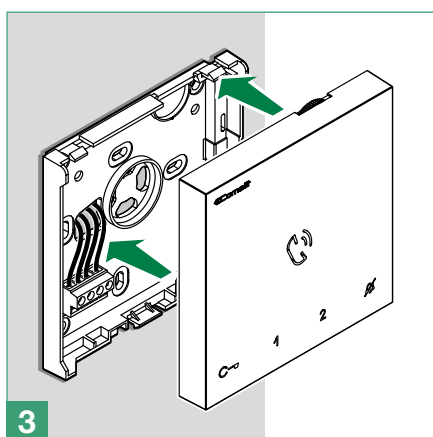
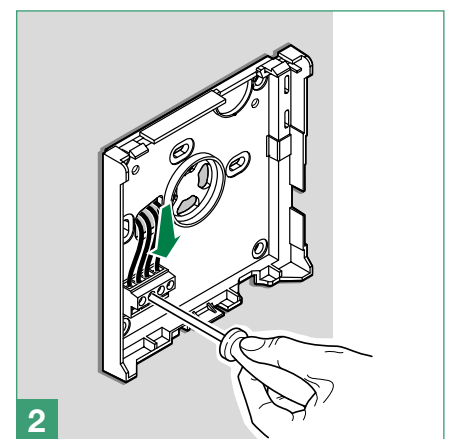
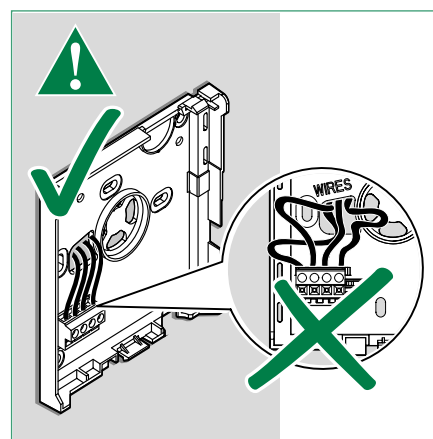
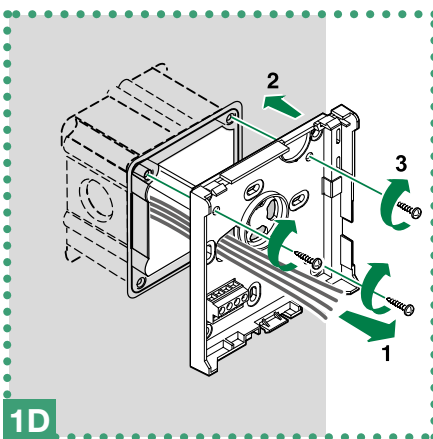
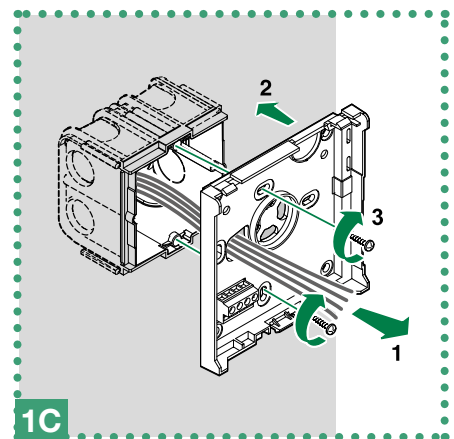
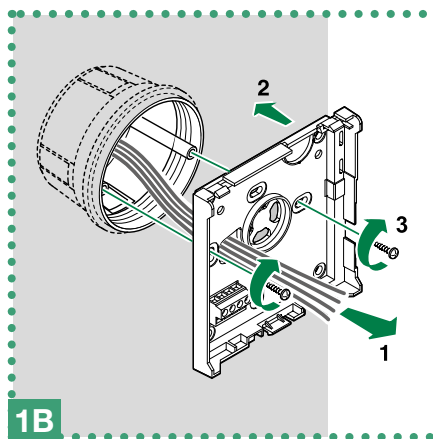
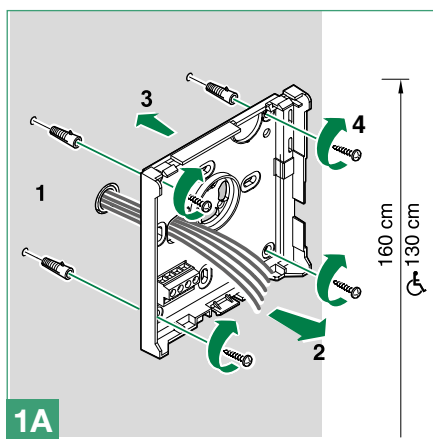
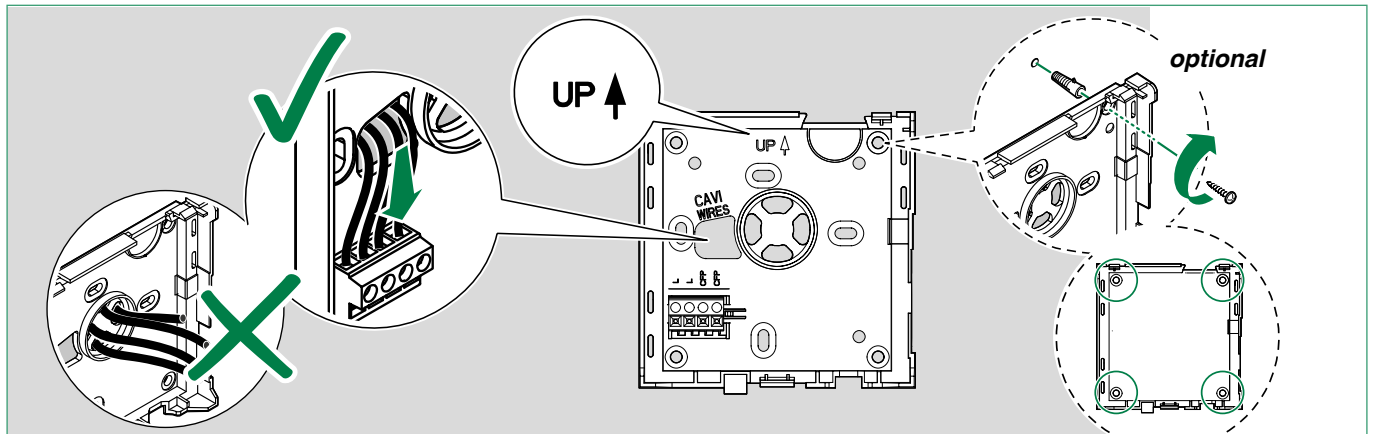
LL Bus line connection terminals

CFP1 CFP2 Floor door call input

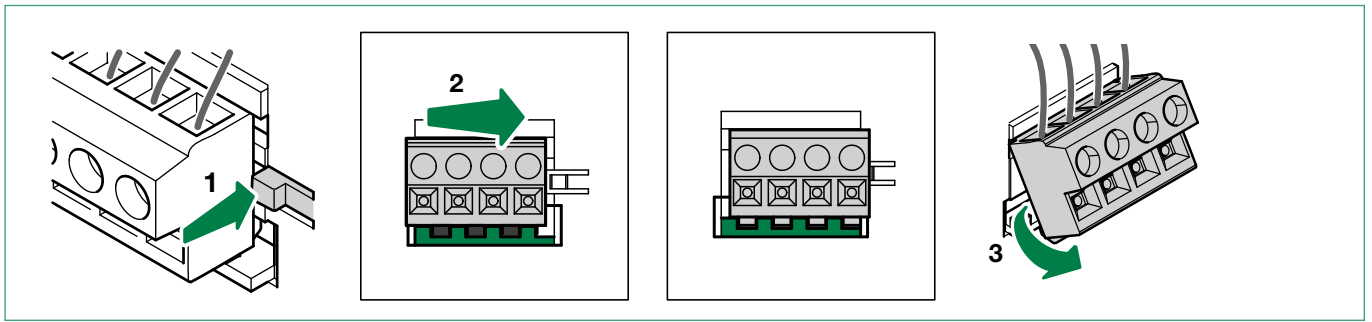
Technical characteristics

	Art. 6750W	Art. 6751W
MAIN SPECIFICATIONS		
<i>SimpleBus 2 audio system</i>	Yes	Yes
<i>SimpleBus Top audio/video system</i>	Yes	NO
<i>Building Kit audio/video system</i>	Yes	NO
<i>Audio/Video kit</i>	Yes	NO
Induction Loop system	Yes	NO
Branch terminal provided	Yes	NO
Wall-mounted	Yes	Yes
Full-duplex audio	Yes	Yes
Product colour	White	White
Sensitive Touch technology	Yes	Yes
Total buttons	5	5
Additional buttons	NO	NO
LED signaling (No.)	3	3
FUNCTIONS		
Actuator control functio	Yes	Yes
Switchboard call	Yes	Yes
Panic call	Yes	Yes
Intercom function	Yes	Yes
Selective intercom call	Yes	Yes
Call to multiple addresses	Yes	Yes
Privacy mode	Yes	Yes
Doctor	Yes	Yes
Floor door call function	Yes	Yes
Electronic bell	Yes	Yes
Customisable ringtone	Yes	Yes
HARDWARE SPECIFICATIONS		
Removable terminals	Yes	Yes
SETTINGS		
Loudspeaker volume control	Yes	Yes
Microphone volume control	NO	NO
Ringtone volume control	Yes	Yes
GENERAL INFO		
Product height (mm)	105	105
Product width (mm)	105	105
Product depth (mm)	20	20
TECHNICAL CHARACTERISTICS		
Power supply voltage	22-35 Vdc	22-35 Vdc
Absorption in standby (mA)	2	2
Maximum current absorption (mA)	130	130
IP Rating	30	30
Operating temperature (°C)	-5 +40	-5 +40
Relative humidity for operation (%)	25-75	25-75
Product weight (g)	0,15	0,15
Terminals	LL CFP1 CFP2	LL CFP1 CFP2

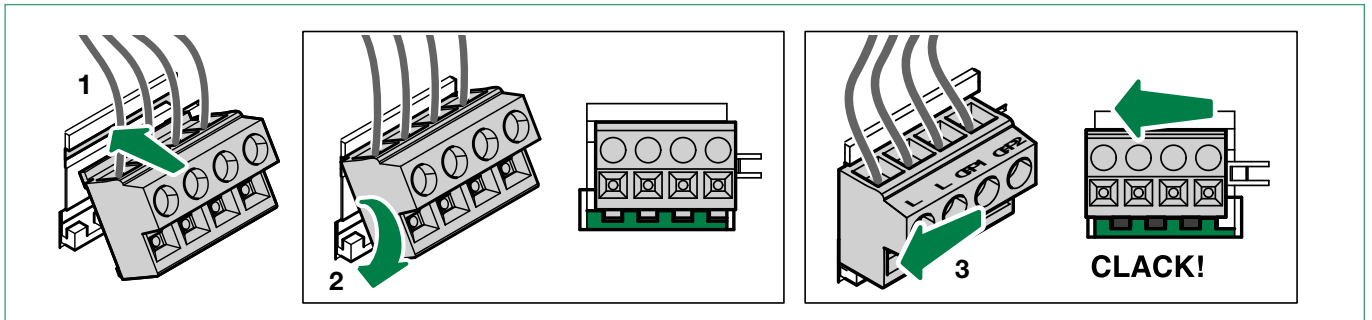
Wall-mounted



Terminal removal

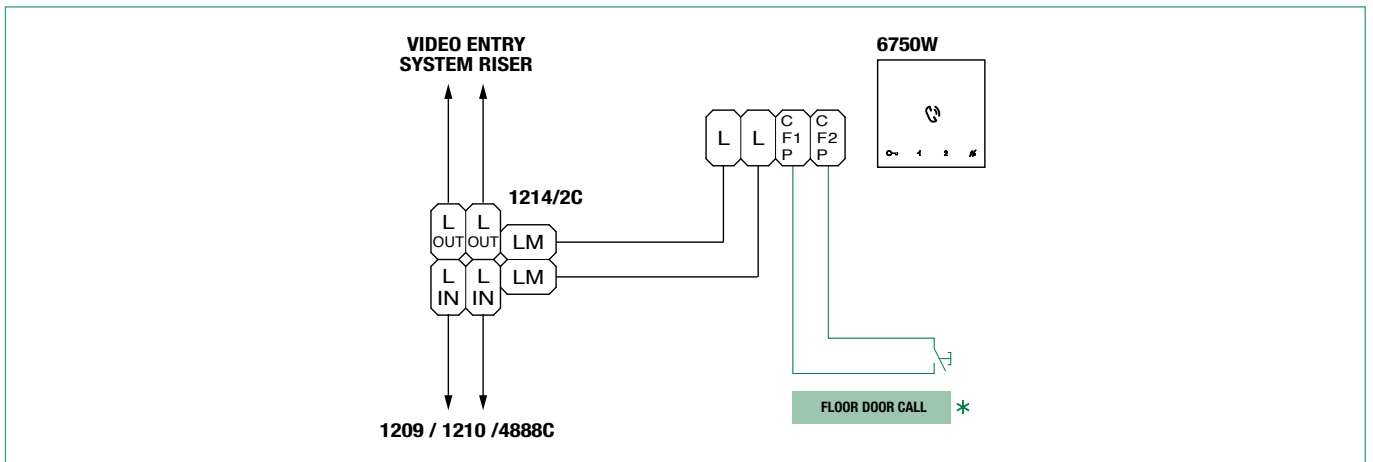


Terminal installation

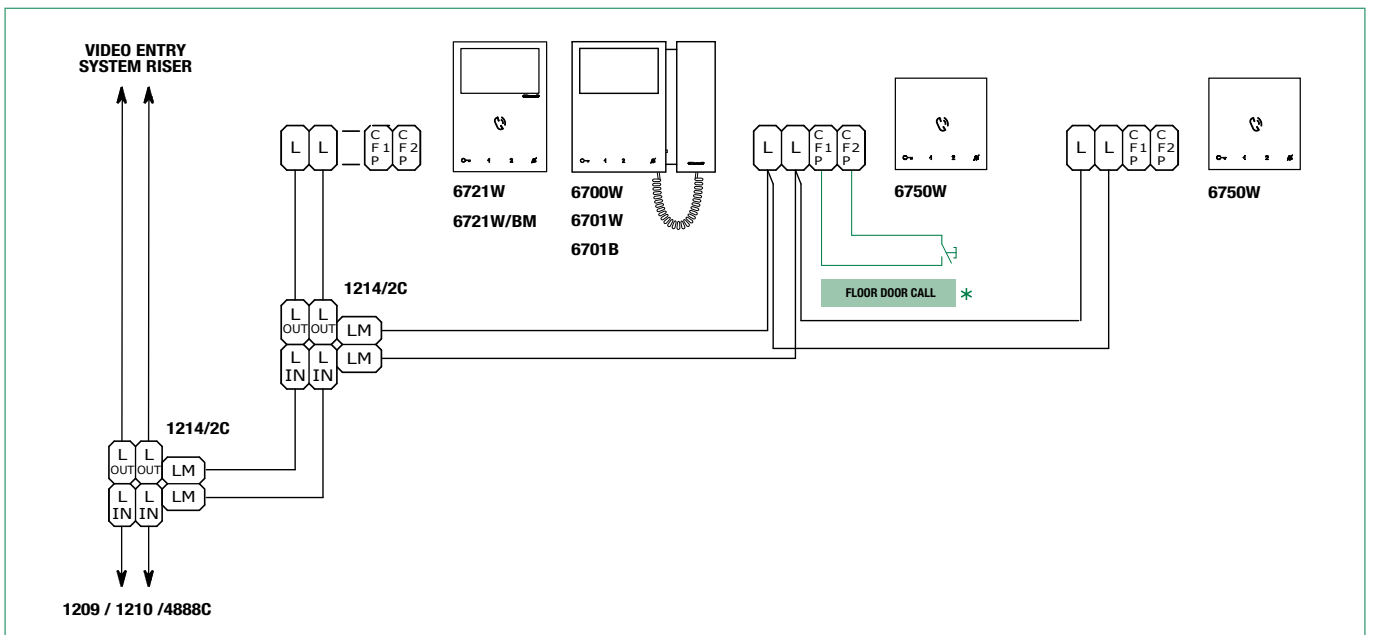


Connections

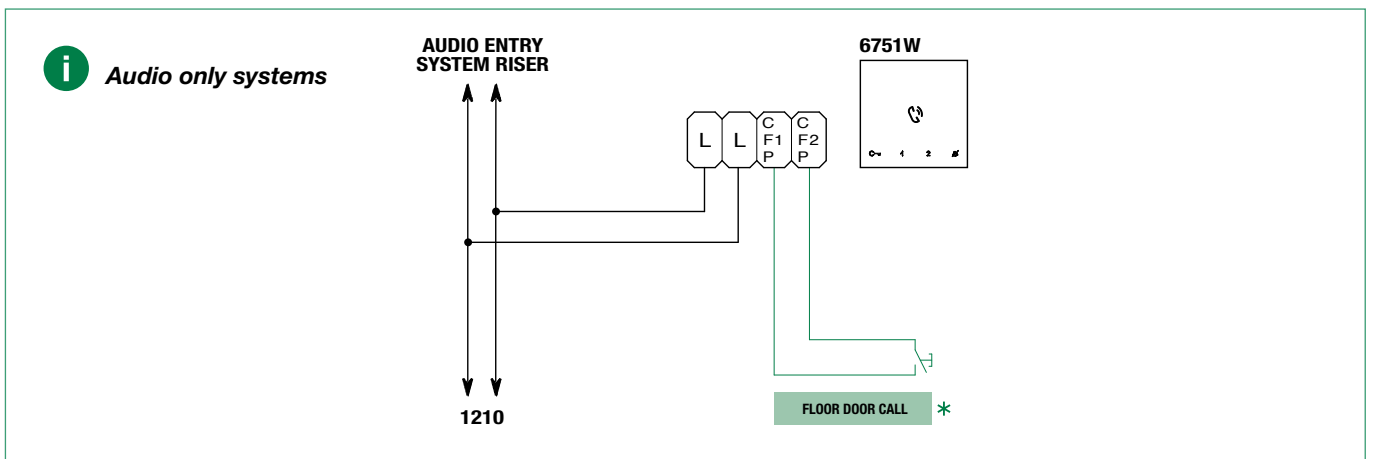
Connection to the video entry riser and the floor door call button



Branched connection to the video entry system riser from the internal video unit



Connection to the door entry riser and the floor door call button



* **20 m MAX** - Use shielded cable for the connection and do not route the cables in the vicinity of heavy inductive loads or power supply cables (230V/400V).

Where multiple door-entry phones or monitor backplates have the same user code, connect the CFP button on one only; all the devices will ring simultaneously.

Touch-sensitive buttons

Description

	Audio activation	[programmable]
	Lock release	[programmable]
1	Actuator function	[programmable]
2	Secondary switchboard	[programmable]
	Privacy Mode	[not programmable]

► Press the desired button once to activate the associated function.



Wait for approximately 1 sec. before pressing the same button again. Pressing the same button several times in quick succession will cancel the command.

Indicator LED

Audio LED

steady on (in call): communication in progress

steady on (in stand-by): Automatic answer mode activated

continuous flashing: incoming call

Lock release LED

slow flashing: door open

1 flash after pressing button: door open confirmed

continuous flashing: incoming call

Privacy LED (red)

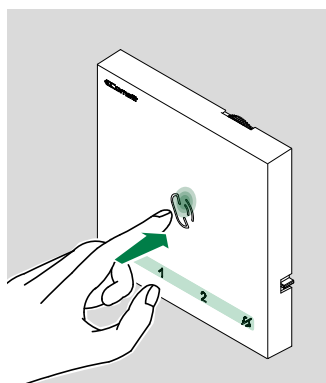
steady on: Privacy mode activated

3 flashes (every 5 sec): Doctor function activated

continuous flashing: device in programming mode

4 flashes: system engaged

Answering an incoming call






Press the touch-sensitive audio activation button to answer the incoming call.

Activation / deactivation of Automatic answer mode


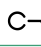


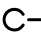

- Long press (5 sec) the button
 - » ACTIVATION: + LED STEADY ON
 - » DEACTIVATION: + LED OFF

Configuration

Touch-sensitive buttons

Legend	
	Audio
	Lock-release
	Privacy mode
ACT	Actuator
CCP	Call to main switchboard
CCS	Call to secondary switchboard
K	Caretaker door-entry phone call
D	Doctor (Automatic door opening on receipt of call)
PAN	Panic
INT	General or selective programmable intercom. <i>Default: single-family call</i>
INTb	General or selective programmable intercom. <i>Default: two-family call</i>
NULL	No function
PROG.	Programmed functions, see " Advanced configuration ". With these DIP-switch settings, the buttons control the programmed functions; The NON-programmed buttons control the functions on line 0000 *(Default).

Basic configuration

S2				BUTTON PROGRAMMING				
DIP 1	DIP 2	DIP 3	DIP 4			1	2	
0	0	0	0			ACT	CCS	
1	0	0	0			ACT	INT	
0	1	0	0			INT	D	
1	1	0	0			ACT	CCP	
0	0	1	0	ACT	ACT	ACT		
1	0	1	0	ACT	K			
0	1	1	0	ACT	D			
1	1	1	0	INTb	INT			
0	0	0	1	CCS	PAN			
1	0	0	1	K	CCS			
0	1	0	1	CCP	K			
1	1	0	1	PAN	CCP			
0	0	1	1	INTb	PAN			
1	0	1	1	INT	INT			
0	1	1	1	NULL				
1	1	1	1	PROG				

* Default 

Advanced configuration

Warning

If the default settings (Table ["Basic configuration"](#)) do not reflect requirements, the buttons can be programmed differently by carrying out the steps below.

After programming, set S2 DIP switches 1-2-3-4 to the combination 1111. With these DIP-switch settings, the buttons control the programmed functions.

i The NON-programmed buttons control the basic configuration functions 0000. To restore the user code setting on S1, see ["addressing table"](#)

Intercom calls: introduction



General and selective intercoms CANNOT be used together on the same riser.

General intercom: call from one *internal unit* to one or more *internal units* identified by the same call address as used by the external unit.

Selective intercom: call from an *internal unit* to one or more *internal units* identified by a dedicated call address (see ["TABLE B"](#)) which is different from the call addressed used by the external unit.

Selective intercom address: programming/cancellation



Take note of the S2, S1 settings and restore on completion of programming

1)	2)	3)												
<p>Programming; set code, "TABLE B"</p> <p>S1</p>	<p>S2 DIP</p> <table border="1"> <tr><td>1</td><td>2</td><td>3</td><td>4</td><td>5</td><td>6</td></tr> <tr><td>0</td><td>0</td><td>0</td><td>1</td><td>1</td><td>1</td></tr> </table> <p>S2</p>	1	2	3	4	5	6	0	0	0	1	1	1	
1	2	3	4	5	6									
0	0	0	1	1	1									
<p>Cancellation</p> <p>DIP ON</p> <p>S1</p>	<p>S2 DIP</p> <table border="1"> <tr><td>1</td><td>2</td><td>3</td><td>4</td><td>5</td><td>6</td></tr> <tr><td>1</td><td>1</td><td>1</td><td>1</td><td>1</td><td>1</td></tr> </table> <p>S2</p>	1	2	3	4	5	6	1	1	1	1	1	1	
1	2	3	4	5	6									
1	1	1	1	1	1									

Selective intercom addresses

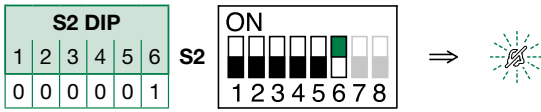
You must set the intercom address on all the riser's internal units.
 You can assign the same intercom address to a maximum of 3 internal units.
 For group calls, select the desired intercom codes simultaneously (max. 3).

TABLE B					
Codice	DIP switch ON	S1	Codice	DIP switch ON	S1
1	1		5	5	
2	2		6	6	
3	3		7	7	
4	4		8	8	

Intercom call: button programming

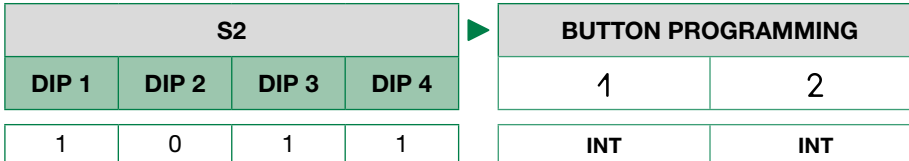
1. To enter programming mode, set S2 **DIP-switch 6** to combination 1

» the Privacy LED flashes



2. Refer to the table **Basic configuration** and select a combination in which the intercom function is listed for the buttons you wish to program.

Example



General intercom

Example programming of button **1** *single-family general intercom*, and button **2** *general intercom to address 9*, of a device with user code **5**.

(Button = INT) Set S2 DIP switches 1-2-3-4 to the combination **1 0 1 1**, set S1 with address 5 in accordance with the **addressing table**. Proceed with programming from point 3.

(Button 2 = INT) Set S2 DIP switches 1-2-3-4 to the combination **1 0 1 1**, set S1 with *address 9* in accordance with **addressing table**. Proceed with programming from point 3.

Selective intercom

Example programming of button **1** *selective intercom* to address 2 and button **2** *selective intercom* to address 3, of a device with user code 1 and intercom address 1.

(Button 1 = INT) Set S2 DIP switches 1-2-3-4 to the combination **1 0 1 1**, set S1 with address 2 in accordance with **TABLE B**. Proceed with programming from point 3.

(Button 2 = INT) Set S2 DIP switches 1-2-3-4 to the combination **1 0 1 1**, set S1 with *address 3* in accordance with **TABLE B**. Proceed with programming from point 3.

3. Press and release the button to be associated with the function

- » *Correct procedure indication:* the *Lock release* LED flashes for a few seconds and a confirmation tone sounds
- » *Procedure error indication:* the *Audio* LED flashes for few seconds and an error tone sounds

4. To exit programming mode, set S2 **DIP switch 6** to the combination 0

» the Privacy LED switches off

5. After programming, set S2 DIP switches 1-2-3-4 to the combination 1111. Restore the user code setting on S1 (see **addressing table**).

Intercom call: direct programming

Allows direct programming of intercom call via the internal units.

✓ Requires 2 operators

Step 1: enter programming mode

Operator 1 and Operator 2 carry out the following procedures on 2 internal units:

1. Set S2 DIP switches 1-2-3-4 to the combination 1111
2. Press the Audio button
3. Press and hold the Privacy and Lock release buttons for 3 sec.
 - » The internal unit emits 1 tone.
 - » The Privacy LED flashes
 - » The internal unit enters audio mode.
 - » At this point the 2 operators are in communication with each other.

Step 2: intercom call programming

Operator 1:

- ▶ Press the button you want to program to call operator 2 (e.g. 2).
 - » The internal unit manned by operator 1 emits a confirmation tone.

Operator 2:

- ▶ Press the button you want to program to call operator 1 (e.g. 1).
 - » The internal unit manned by operator 2 emits a confirmation tone.

Operator 1/Operator 2:

- ▶ Press the Audio button
 - » The internal unit emits 1 tone.
 - » Programming of the 2 internal units is now complete.

To program another internal unit, go to STEP 3.

Step 3: programming other internal units

Operator 1/Operator 2:

1. Once the new station has been reached, carry out step 1 to begin communication.
2. Repeat step 2.



N.B. If a call is received during programming, it must be answered and the programming procedure resumed afterwards.

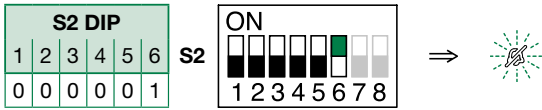
Generic actuator, Addressable actuator: button programming



Take note of the DIP-switch settings.

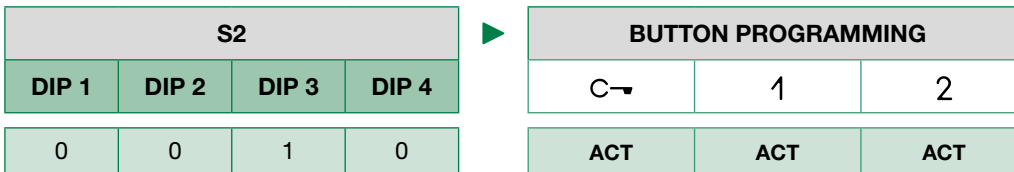
1. To enter programming mode, set S2 **DIP switch 6** to combination 1

» the Privacy LED flashes



2. Refer to the table "**Basic configuration**" and select a combination in which the actuator function (ACT) is listed for the buttons you wish to program.

Example



Example programming of button 1 *generic actuator*, and button 2 *addressable actuator* to code 125

(Button 1 = ACT) Set S2 DIP switches 1-2-3-4 to the combination **0 0 1 0**, Set S1 DIP switches to the combination 11111111.

(Button 2 = ACT) Set S2 DIP switches 1-2-3-4 to the combination **0 0 1 0**, set S1 with address 125 in accordance with [addressing table](#).

3. Press and release the button to be associated with the function

- » *Correct procedure indication:* the *Lock release* LED flashes for a few seconds and a confirmation tone sounds
- » *Procedure error indication:* the *Audio* LED flashes for few seconds and an error tone sounds

4. To exit programming mode, set S2 DIP switch 6 to the combination 0

» the Privacy LED switches off

5. After programming, set S2 DIP switches 1-2-3-4 to the combination 1111. Restore the user code setting on S1, see [addressing table](#).

Other functions

1. To enter programming mode, set S2 **DIP switch 6** to combination 1

» the Privacy LED flashes



2. Refer to the table "**Basic configuration**" and select a combination in which the desired/necessary functions are listed for the buttons you wish to program.

S2				BUTTON PROGRAMMING			
DIP 1	DIP 2	DIP 3	DIP 4			1	2
0	0	0	0				CCS
0	1	0	0				D
1	1	0	0				CCP
1	0	1	0				K
0	1	1	0				D
0	0	0	1			CCS	PAN
1	0	0	1			K	CCS
0	1	0	1			CCP	K
1	1	0	1			PAN	CCP
0	0	1	1				PAN
0	1	1	1				
1	1	1	1				
				NULL			
				PROG			

Example programming of button 1 *Call to secondary switchboard* and button 2 *Panic*.
(Button 1 = CCS, Button 2 = PAN) Set S2 DIP switches 1-2-3-4 to the combination **0 0 0 1**.

3. Press and release the buttons to which you wish to assign the functions

- » *Correct procedure indication:* the Lock release LED flashes for a few seconds and a confirmation tone sounds
- » *Procedure error indication:* the Audio LED flashes for few seconds and an error tone sounds

4. To exit programming mode, set S2 DIP switch 6 to the combination 0

» the Privacy LED switches off

5. After programming, set S2 DIP switches 1-2-3-4 to the combination 1111.

Programming range



Take note of the S2, S1 settings and restore on completion of programming

Carry out steps 1 to 4

	1)	2)	3)	4)
Range minimum address				
Range maximum address				
Enable range				
Disable range				
Deleting the range				

Changing the ringtone

1. Press and hold C→ for 6 sec.
 - » a confirmation tone will sound
 - » the Privacy LED will flash to indicate "programming" mode.
- ✓ the procedure can only take place while the system is in standby; otherwise the Privacy LED will flash 4 times to inform the user that the system is engaged.
2. Press and release C→
 - Once** (1 confirmation tone is emitted) to change the ringtone for calls from the external unit.
 - Twice** (2 confirmation tones emitted) to change the switchboard call tone
 - 3 times** (3 confirmation tones are emitted) to change the ringtone for intercom calls made from the internal unit.
 - 4 times** (4 confirmation tones are emitted) to change the floor door call ringtone.
 - Any further presses of button C→ will repeat the sequence described above.
3. Press and release 1 to scroll through the various available ringtones in sequence.
4. Press 2 to confirm selection of the last ringtone heard and to exit change monitor ringtone mode.
 - » one confirmation tone is emitted
 - » the Privacy LED switches off

Repeat steps 1 to 4 to change the other ringtones.

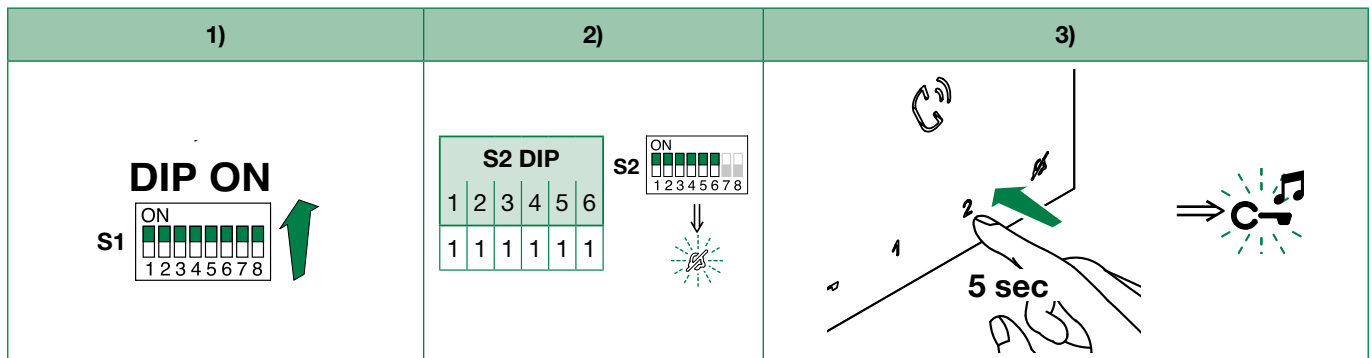
Programming reset

Factory settings

- Button functions for the S2 DIP switches 1-2-3-4 combination
- Intercom address absent
- Range function and min./max. addresses absent
- Ringtone reset



Take note of the S2, S1 settings and restore on completion of programming



System performance and layouts

For further information of system performance and to view installation layouts, click on the system type that best meets your requirements:

- [Audio/video kit](#) for the creation of audio-video systems for *individual residences*
- [Building Kit audio/video system](#) for the creation of audio-video systems for *small apartment blocks*
- [SBTOP audio/video system](#) for the creation of audio-video systems for *residential complexes*
- [SB2 audio system](#) for the creation of audio systems for *residential complexes*

CERTIFIED MANAGEMENT SYSTEMS



www.comelitgroup.com

Via Don Arrigoni, 5 - 24020 Rovetta (BG) - Italy

 **Comelit**[®]
Passion. Technology. Design.