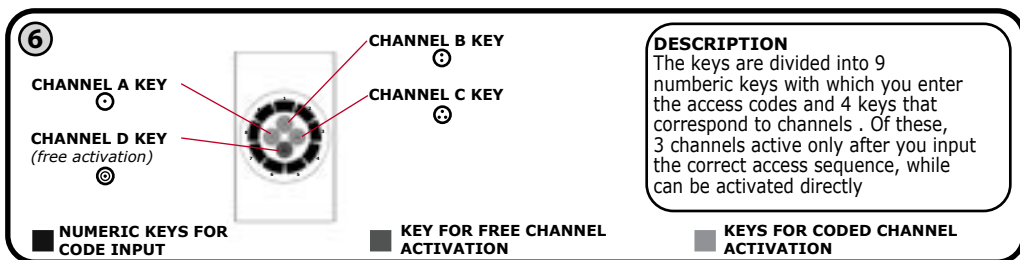


NOVO DIGY - RADIO DIGITAL SELECTOR



1 - GENERAL DESCRIPTION

The keypad "NOVO-DIGY" is a radio control device 433.920MHz powered by 2 AAA batteries. It has 3 channels protected by a numeric combination code and a fourth channel can be activated without code input (see Figure 6). It needs a King-gates receiver that can decode the signal.

2 - FIXING THE KEYPAD

ⓘ Before fixing the keypad it is recommended to follow the procedure of code memorization in the desired receiver (see section 8 and 10).

- Open the keypad (see fig.5)
 - Insert the batteries in the housing (ref. "D" fig.5)
 - Drill the base in the designated points (ref "B" fig. 3 and 4)
- Proceed mounting verifying the correct way of the base indicated by the arrow (ref."UP" fig 3 and 4)
- Reclose the keypad verifying the correct position of the gasket on the base (ref "C" fig.5)

3 - AUDIBLE SIGNALS

- STAND-BY : After 10 seconds of inactivity the keyboard give a long beep and will enter into standby.
- Each time you press a key a short beep is given.
- If the battery is low the keypad will give three beeps.
- After entering a correct code and pressing the corresponding channel the keypad gives a long beep.
- If you enter a code not recognized the keypad will give an error beep

4 - REPLACING THE BATTERY

To replace the battery you must open the keypad, remove the battery holder (part "D" fig 5) from under the circuit board and insert the new batteries type AAA.

5 - OPERATING THE KEYPAD

To use the channels "A", "B" or "C" (protected by numeric combination) you must first perform programming as at section 7 followed by paragraph 8. To use channel "4" (does not need numeric combination) you must follow programming as per paragraph 10.

Once programmed at least one channel see section 11.

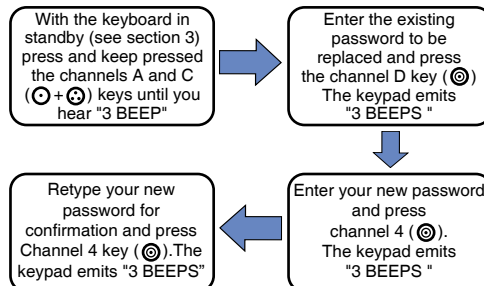
6 - MODIFYING THE MASTER PROGRAMMING PASSWORD

The password is needed to enable the programming of channels "A", "B" and "C" (section 7). We recommend that you customize and communicate it to the person who will manage the facility (see form at the end of the instruction manual where also it is illustrated how to replace the batteries).

ⓘ The default password is 1111.

If fixed horizontal and the sticker has been attached (part A fig.2) the password is 3333.

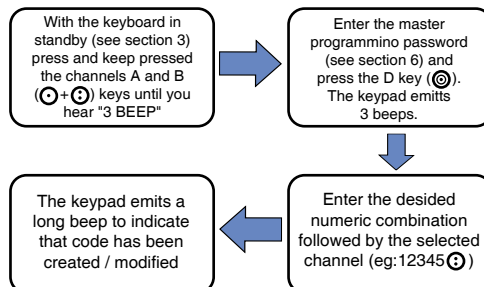
ⓘ Passwords created must have a minimum of 3 and maximum of 8 numbers.



7 - CREATING OR MODIFYING OF A NUMERIC COMBINATION FOR CHANNEL "A", "B" OR "C"

This procedure creates or changes a numeric combination that can trigger channel "A", "B" or "C". As a internal programming of the keyboard it is not necessary to be next to the receiver. If you create (not change) a numeric combination for the first time you must also do the procedure in paragraph 8 to operate the system.

ⓘ The combinations created are made up from 3 to 5 numbers

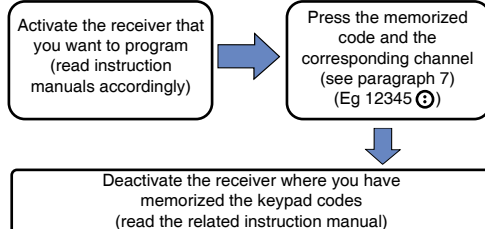


ⓘ If you already have a code combined to the selected channel, it will be replaced

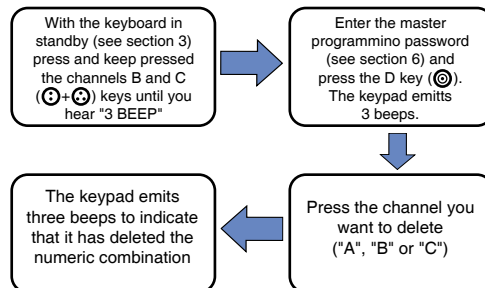
ⓘ If you forget a combination combined to a channel just repeat this procedure to create a new combination

8 - ENTERING A NUMERIC COMBINATION ON CONTROL UNIT / RECEIVER

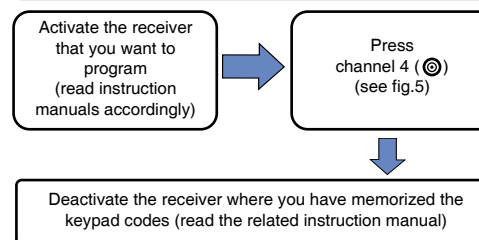
ⓘ It is recommended to memorize the codes before mounting the keypad, in order to be within reach of the receiver card and verify the cose reception.



9 - CANCELLING A NUMERICAL COMBINATION TO A SPECIFIC CHANNEL



10 - MEMORIZING A CODE IN CHANNEL 4



11 - USING THE KEYPAD

Once programmed the code and channel for activation type in programmed code a relative channel (ex. 12345ⓔ). If you desire to activate the receiver with channel 4 (ⓔ) you just need to press the relative key (no code is required).

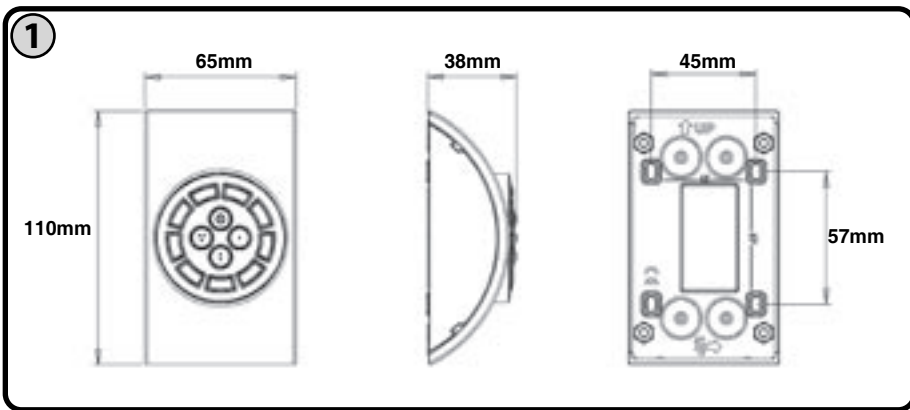
12 - DELETING ALL THE CODES

To clear the memorized codes you must reset the receiver memory in which you have memorized the codes (read related instruction manual).

The undersigned Mario Antonioli legal representative of the company Antonioli Mario & C sas, declares that the product "Novo-digy" result in conformità according to the R&TTE directives.

The legal representative,
 Antonioli Mario

Mario Antonioli



DIGITAL KEYPAD PASSWORD

EN

MANAGEMENT PROGRAM

PASSWORDS:

CHANNEL 1

COMBINATION:

CHANNEL 2

COMBINATION:

CHANNEL 3

COMBINATION:

