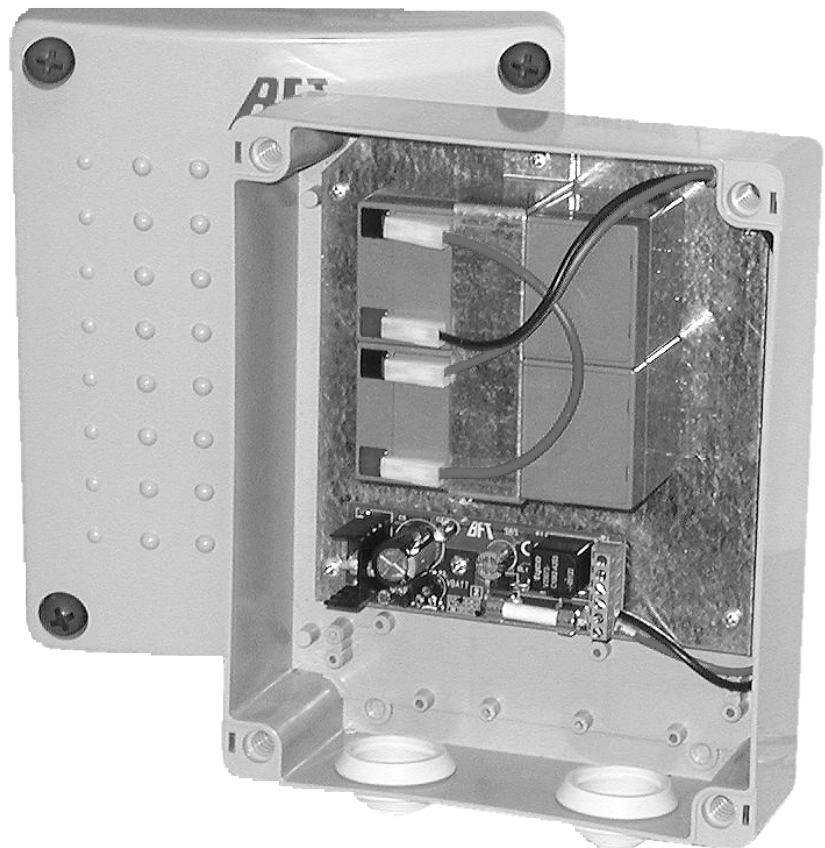


BATTERY BACK UP KIT



1) GENERAL OUTLINE

BTBAT mod. buffer battery kit.

Allows the automation system to operate even when the mains power supply is disconnected for a short time. The pack includes (fig.1):

- 2 buffer batteries (ref. B).
- 1 battery charger board (ref. SBS).
- Assembly instruction manual.

2) SBS BOARD AND BATTERY SPECIFICATIONS

Charge voltage: 27.2Vdc
 Charge current: 130mA
 Data detected with external temperature of: 25°C
 Battery capacity: 2x (12V 1.2Ah)
 Exhausted battery protection threshold: 20.4Vdc
 Battery recharging time: 12/14 h

3) FITTING

All assembly and connection operations must be carried out by qualified personnel. To fit the accessory, proceed as follows:

- Disconnect the mains power supply.
- Proceed to connect the cables as shown in the diagram.
- For battery disposal, refer to the current regulations.

The descriptions and illustrations contained in the present manual are not binding. The Company reserves the right to make any alterations deemed appropriate for the technical, manufacturing and commercial improvement of the product, while leaving the essential product features unchanged, at any time and without undertaking to update the present publication.

Fig. 1

