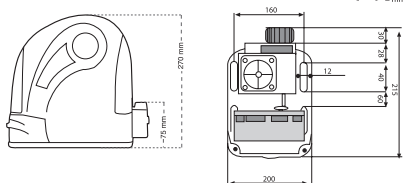
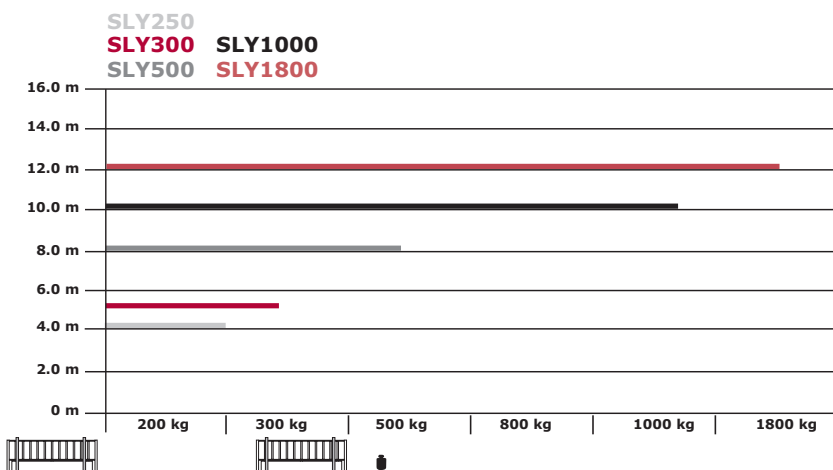
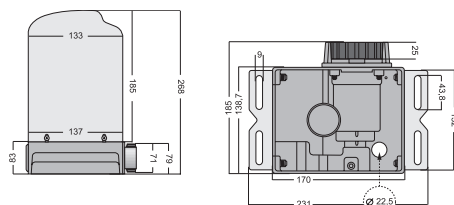


SLY300/SLY500/SLY1000/SLY1800



SLY250



Optional accessories

Technical Data

- 320001 Rack, 1 m, steel
- 202097 Rack, 4 x 1 m Kit, steel
- 202127 Rack, 1 m, plastic
- 202134 Rack, 8 x 0.5 m, plastic
- 203261 RPM sensor

		SLY250	SLY300	SLY300-24	SLY500	SLY500-24	SLY500-120	SLY1000	SLY1800
Voltage IN	V AC	220-240	220-240	220-240	220-240	220-240	127	220-240	220-240
Frequency IN	Hz	50	50	50	50	50	60	50	50
Motor voltage	V	230 AC	230 AC	24 DC	230 AC	24 DC	127 AC	230 AC	230 AC
Power (nom.)	W	130	300	40	360	60	360	480	600
Current (max.)	A	1	1.3	1.8	1.5	2.5	2.8	2.1	2.6
Torque	Nm	6	10	8	14	12	14	20	34
Capacitor	µF	8	8	-	10	-	40	16	20
Thermal overload protection	°C	140	140	-	140	-	140	140	140
Motor speed	rpm	1,400	1,400	2,500	1,400	2,200	1,650	1,400	1,400
Travel speed (~)	m/min	12	10.5	14	10.5	12	12	10.5	8
Duty cycle (max.)	cycles/h	~20	~20	~50	~20	~50	20	~20	~20
Working temperature range	°C	-25 +55	-25 +55	-25 +55	-25 +55	-25 +55	-25 +55	-25 +55	-25 +55
Protection class		I	I	I	I	I	I	I	I
Degree of protection	IP	44	44	44	44	44	44	44	44
Product weight (~)	kg	7	8	8	8	8	8	9	10

For more accessories please refer to the price.

Model & carton content chart

Model	Drive unit with cover	Adjustable mounting plate	Capacitor	Transformer	Magnetic limit switches	Electronic control	Remote control 94335E	Receiver & radio 801221	IR sensor 772E	Flashing light FLA1-LED	Key switch COM18010	Antenna kit ANT4X-1LM	Number of cartons
SLY250	1 x	•	•		•								1
SLY250K	1 x	•	•		•	•	2 x	433 MHz	•	optional	optional	optional	2
SLY300	1 x	•	•		•								1
SLY300-24	1 x	•											1
SLY300K	1 x	•			•				•	optional	optional	optional	3
SLY324K	1 x	•		•	•	•	2 x	433 MHz	•	optional	optional	optional	3
SLY500	1 x	•	•		•								1
SLY500-24	1 x	•		•	•								1
SLY500K	1 x	•	•		•	•	2 x	433 MHz	•	optional	optional	optional	3
SLY524K	1 x	•		•	•	•	2 x	433 MHz	•	optional	optional	optional	3
SLY500K-120	1 x	•	•		•	•	2 x	390 MHz	•	optional	optional	optional	3
SLY1000	1 x	•	•		•								1
SLY1000K	1 x	•	•		•	•	2 x	433 MHz	•	optional	optional	optional	3
SLY1800	1 x	•	•		•								1
SLY1800K	1 x	•	•		•	•	2 x	433 MHz	•	optional	optional	optional	3