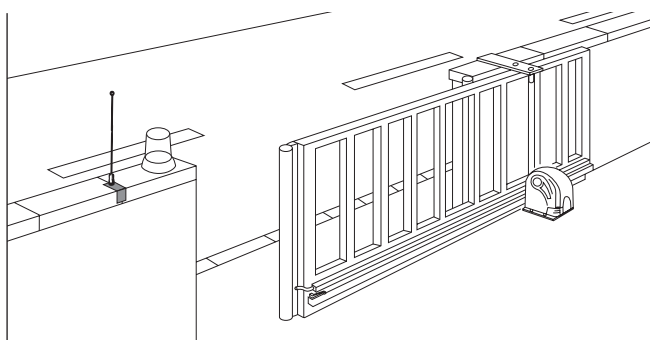


SLY



2-Year Full warranty
Install all equipment in
compliance with EN60335-2-103.

High quality accessories included in the carton

SLY250K | SLY300K | SLY324K | SLY500K | SLY524K | SLY500K-120 | SLY1000K | SLY1800K



**3-channel mini
remote control
94335E**



**Receiver
801221**



**IR Sensor
772E**



**Control 230 V
CB22**

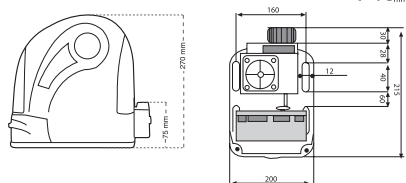


**Control 24 V
CB202**

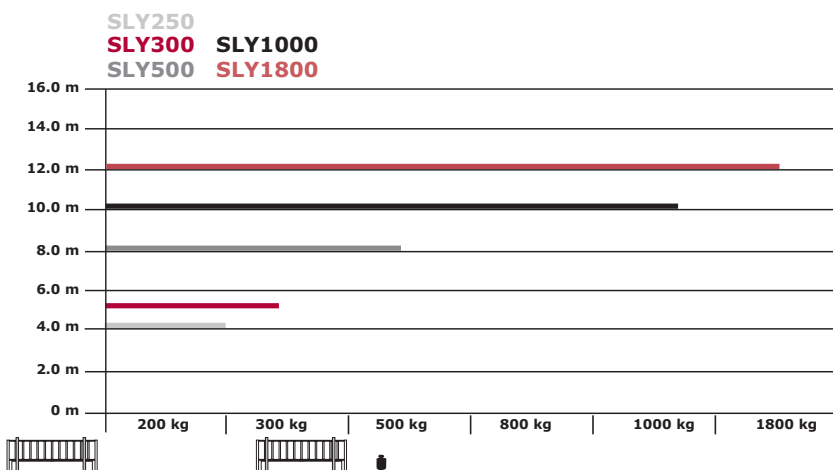
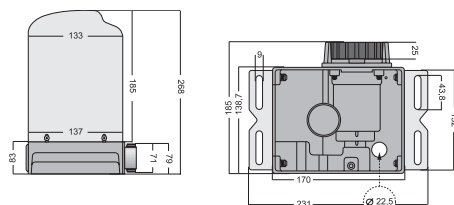


* From Q III 2013, all LiftMaster Gate Operators will include the new 4-channel universal transmitter 433 MHz (TX4UNI). The TX4UNI universal transmitter can be used with any LiftMaster operator since 2003 which will enable you to operate all your LiftMaster Garage Door and Gate Operators with just one transmitter!

SLY300/SLY500/SLY1000/SLY1800



SLY250



Optional accessories

Technical Data

- 320001 Rack, 1 m, steel
- 202097 Rack, 4 x 1 m Kit, steel
- 202127 Rack, 1 m, plastic
- 202134 Rack, 8 x 0.5 m, plastic
- 203261 RPM sensor

| | | SLY250 | SLY300 | SLY300-24 | SLY500 | SLY500-24 | SLY500-120 | SLY1000 | SLY1800 |
|-----------------------------|----------|------------|------------|------------|------------|------------|------------|------------|------------|
| Voltage IN | V AC | 220-240 | 220-240 | 220-240 | 220-240 | 220-240 | 127 | 220-240 | 220-240 |
| Frequency IN | Hz | 50 | 50 | 50 | 50 | 50 | 60 | 50 | 50 |
| Motor voltage | V | 230 AC | 230 AC | 24 DC | 230 AC | 24 DC | 127 AC | 230 AC | 230 AC |
| Power (nom.) | W | 130 | 300 | 40 | 360 | 60 | 360 | 480 | 600 |
| Current (max.) | A | 1 | 1.3 | 1.8 | 1.5 | 2.5 | 2.8 | 2.1 | 2.6 |
| Torque | Nm | 6 | 10 | 8 | 14 | 12 | 14 | 20 | 34 |
| Capacitor | µF | 8 | 8 | - | 10 | - | 40 | 16 | 20 |
| Thermal overload protection | °C | 140 | 140 | - | 140 | - | 140 | 140 | 140 |
| Motor speed | rpm | 1,400 | 1,400 | 2,500 | 1,400 | 2,200 | 1,650 | 1,400 | 1,400 |
| Travel speed (~) | m/min | 12 | 10.5 | 14 | 10.5 | 12 | 12 | 10.5 | 8 |
| Duty cycle (max.) | cycles/h | ~20 | ~20 | ~50 | ~20 | ~50 | 20 | ~20 | ~20 |
| Working temperature range | °C | -25 +55 | -25 +55 | -25 +55 | -25 +55 | -25 +55 | -25 +55 | -25 +55 | -25 +55 |
| Protection class | | I | I | I | I | I | I | I | I |
| Degree of protection | IP | 44 | 44 | 44 | 44 | 44 | 44 | 44 | 44 |
| Product weight (~) | kg | 7 | 8 | 8 | 8 | 8 | 8 | 9 | 10 |

For more accessories please refer to the price.

Model & carton content chart

| Model | Drive unit with cover | Adjustable mounting plate | Capacitor | Transformer | Magnetic limit switches | Electronic control | Remote control 94335E | Receiver & radio 801221 | IR sensor 772E | Flashing light FLA1-LED | Key switch COM18010 | Antenna kit ANT4X-1LM | Number of cartons |
|-------------|-----------------------|---------------------------|-----------|-------------|-------------------------|--------------------|-----------------------|-------------------------|----------------|-------------------------|---------------------|-----------------------|-------------------|
| SLY250 | 1 x | • | • | | • | | | | | | | | 1 |
| SLY250K | 1 x | • | • | | • | • | 2 x | 433 MHz | • | optional | optional | optional | 2 |
| SLY300 | 1 x | • | • | | • | | | | | | | | 1 |
| SLY300-24 | 1 x | • | | | | | | | | | | | 1 |
| SLY300K | 1 x | • | | | • | | | | • | optional | optional | optional | 3 |
| SLY324K | 1 x | • | | • | • | • | 2 x | 433 MHz | • | optional | optional | optional | 3 |
| SLY500 | 1 x | • | • | | • | | | | | | | | 1 |
| SLY500-24 | 1 x | • | | • | • | | | | | | | | 1 |
| SLY500K | 1 x | • | • | | • | • | 2 x | 433 MHz | • | optional | optional | optional | 3 |
| SLY524K | 1 x | • | | • | • | • | 2 x | 433 MHz | • | optional | optional | optional | 3 |
| SLY500K-120 | 1 x | • | • | | • | • | 2 x | 390 MHz | • | optional | optional | optional | 3 |
| SLY1000 | 1 x | • | • | | • | | | | | | | | 1 |
| SLY1000K | 1 x | • | • | | • | • | 2 x | 433 MHz | • | optional | optional | optional | 3 |
| SLY1800 | 1 x | • | • | | • | | | | | | | | 1 |
| SLY1800K | 1 x | • | • | | • | • | 2 x | 433 MHz | • | optional | optional | optional | 3 |

TRANSMITTER TX4UNI



The **TX4UNI** universal receiver can be used with the new Evolution Garage Door Opener program as well as with any LiftMaster operator since 2003 with rolling code technology. The **TX4UNI** universal receiver has a **white** LED and operates on 433 MHz rolling code technology. It may replace the following transmitters (94330E, 94333E, 94335E, 94334E as well as 4330E, 4333E, 4335E).

REMOTE CONTROLS 433 MHZ ROLLING CODE



94330E 1-channel remote control

- Rolling code security
- Operates with two 3 V batteries CR2032 (included)
- Visor clip included



94333E 3-channel remote control

- Rolling code security
- Operates with two 3 V batteries CR2032 (included)
- Visor clip included
- Suitable for all Chamberlain garage door openers and gate operators with rolling code



94335E 3-channel mini remote control

- Rolling code security
- Operates with one 3 V battery CR2032 (included)
- Suitable for all Chamberlain garage door openers and gate operators with rolling code



94334E 4-channel mini remote control

- Rolling code security
- Suitable for all Chamberlain garage door openers and gate operators with rolling code
- Operates with one 3 V battery CR2032 (included)

COMMON ACCESSORY KITS



CAK-0 Common accessory kit

- Common accessory kit
- Included: 2 x remote controls (94335E), 1 x 433 MHz radio receiver (801221), IR sensor



CAK-1 Common accessory kit

- Common accessory kit
- Included: 2 x remote controls (94335E), 1 x 433 MHz radio receiver (801221), 1 x key switch (COM18010), 1 x flashing lamp (FLA24-2), 1 x antenna kit (SWG-ANT)

RECEIVERS



8002E 2-channel receiver – billion & rolling code

All Frequencies

- Two channels
- Water resistant plastic housing IP55
- Antenna

Memory: 15 codes: 13 computer codes, 1 DIP switch code and 1 wireless entry system code

Relay: 6 A/60 V

Please note: Order RF module separately



801221 RF module

Frequency 433.92 MHz

- Superheterodyne ("Narrow-band")
- For 801702 or 8002E and CB11, CB22, CB124, CB24

Modulation: AM



ANT4X-1LM Remote antenna mounting kit

For use with the co-axial antenna connection on LiftMaster garage door and gate opener when remote operation is needed.

- Kit contains: 433.92 MHz antenna, adapter, antenna bracket and 5.0 m cable.



STAR™250-433 Universal receiver

- Universal receiver with antenna
- Rapid Learn™ feature programs multiple remote controls in seconds
- User-friendly programming technology makes it easy to add, block and delete up to 250 remote controls individually
- Ideal for gated communities, parking lots and garages
- Compatible with Chamberlain™, billion code, rolling code and keyless entry technologies
- 433.92 MHz
- Duplicate memory module may be removed for programming additional receivers or for safe back-up storage
- Watertight box (41A2743X)

KEY LOCK DEVICES



100010 Keyswitch 1-function, flush mount

- Profile half cylinder
- 75 x 75 x 60 mm, ø 60 x 51 mm deep
- IP54, 3 keys



100027 Keyswitch 1-function, surface mount

- Profile half cylinder
- 75 x 75 x 50 mm
- IP54, 3 keys



100034 Keyswitch 2-function, flush mount

- Profile half cylinder
- 75 x 75 x 60 mm, ø 60 x 51 mm deep
- IP54, 3 keys



100041 Keyswitch 2-function, surface mount

- Profile half cylinder
- 75 x 75 x 50 mm
- IP54, 3 keys



600015 Key switch stand – 1,100 mm

- Recommended for all keyless entry code systems
- Recommended for surface mount switch
- Powdercoat paint finish for rust resistance
- Heavy-duty steel construction

INFRARED SENSORS



770E The Protector System™ failsafe infrared sensor system

- Current draw: 13 mA max. / Operating voltage: 6 V, IP56
- For use with CB3 & all LiftMaster garage door openers
- Red light LED indicates IR beam continuity

771E Failsafe infrared safety sensor

- Current draw: 20 mA max., IP44
- Status LED indicates the IR sensor's continuity
- For use with CB3 & all LiftMaster garage door openers
- 2-wire system

60008 IR sensor stand – 530 mm

- Universally accommodates any IR sensor
- Powdercoat paint finish for rust resistance
- Heavy-duty steel construction

772E Infrared safety sensor

- Modern and attractive Design
- For use with all LiftMaster garage door and gate openers
- IP44, range 15 meters
- 2-wire system with LiftMaster signal

773E Relay Infrared safety sensor

- Modern and attractive Design
- Compatible with all traditional control boards
- IP44, range 20 meters
- 12/24 Volts AC/DC

772VPE Protective cover to prevent accidental damage and vandalism for 772E/773E

- Modern and attractive Design

772APE Mounting plate for 772E/773E

- Modern and attractive Design
- Applicable with protective cover 772VPE

77C1 IR Aluminium stand 5500 mm (pair)

- Aluminium stand for 772E/773E
- Modern Design
- Flexible use

77C2 IR Aluminium stand 1100 mm

- Aluminium stand fo 772E/773E
- Modern Design
- Flexible use

77XBP Mounting plate

- Mounting plate for 77C1 and 77C2

LOOP DETECTORS



203292 1-channel loop detector

- 24 V AC/DC
- IP40
- Requires no special loop wire
- Training manual available GB/D
- For safety or as switch to use



203308 2-channel loop detector

- 24 V AC/DC
- IP40
- Requires no special loop wire
- Training manual available GB/D
- For safety or as switch to use
- For direction detecting or 2 single loops

HARD STOPS



203315 Standard hardstop

- 122 x 100 mm
- 37 and 19 mm high
- Zinc coated
- For screw mount



203322 Hard stop high

- 72 x 100 mm
- 70 mm high
- Zinc coated
- For concrete mount



207399 E-lock support board

- For CB3, CB124, SCS200K (CB102)
- Provides output power and wire connection (12 V)
- 230 V/50 Hz input