


## Technical Support

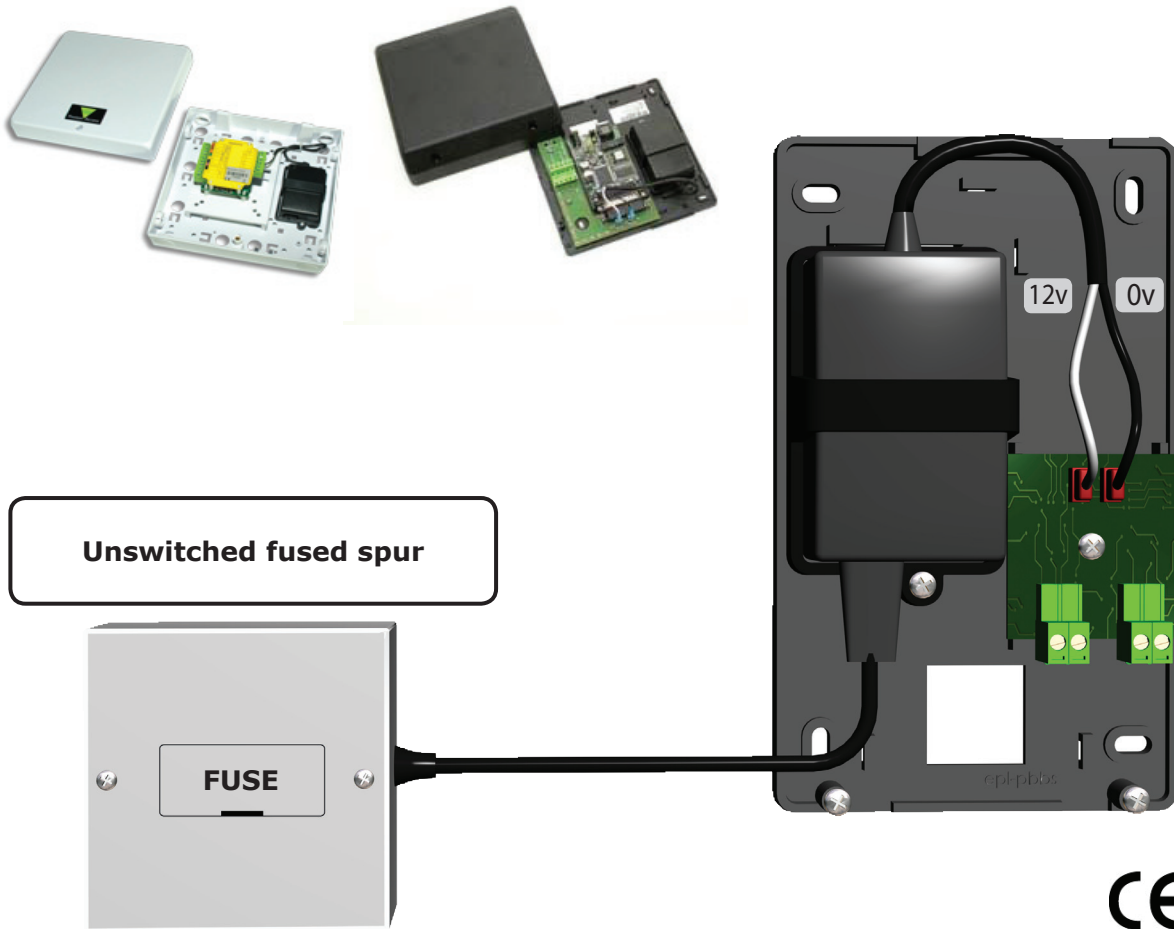
 01273 811011



support@paxton.co.uk

Technical help is available: Monday - Friday from 07:00 - 19:00 (GMT)  
Saturday from 09:00 - 13:00 (GMT)

Documentation on all Paxton products can be found on our website - <http://www.paxton.co.uk/>



The figure 8 power lead provided is pre-stripped at one end for connection to a fused spur.

## Specifications

Specifications			
Environment		Min	Max
Operating temperature		- 20 °C	+ 55 °C
Waterproof			No
Cable length			2 metres
Electrical		Min	Max
Mains supply voltage		100V AC	240V AC
Mains supply frequency		50 Hz	60 Hz
Voltage		11.4v DC	13.6v DC
Output voltage ripple			100 mV
Current			1A
Dimensions		Width	Height
Power supply only		108 mm	175 mm
Control unit (Black case)		170 mm	175 mm
Control unit (White case)		200 mm	200 mm
			Depth
			40 mm
			40 mm
			75 mm