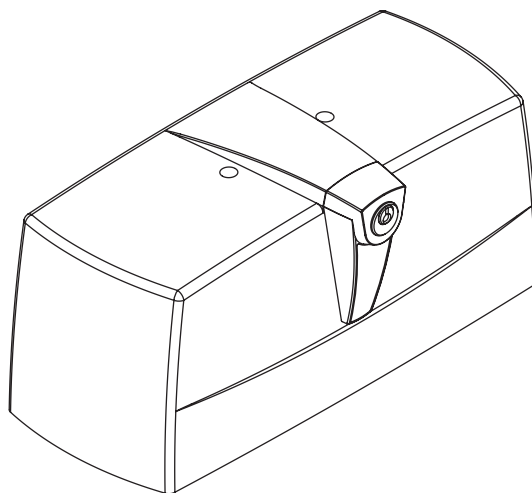


L8542132  
Rev. 07/06/00

# BENINCA®

APRICANCELLO ELETTROMECCANICO  
ELECTROMECHANICAL GATE OPENER  
*ELEKTROMECHANISCHE AUTOMATION FÜR SCHIEBEGITTER*  
*AUTOMATISATION ÉLECTROMÉCANIQUE POUR GRILLES*  
ABRECANCELA ELECTROMECHANICO  
ELEKTROMECHANICZNY OTWIERACZ BRAM

## PREMIER



Manual istruzioni e catalogo ricambi

**Operating instructions and spare parts catalogue**

*Betriebsanleitung und Ersatzteilliste*

***Livret d'instructions et catalogue des pieces de rechange***

Manual de instrucciones y catálogo de recambios

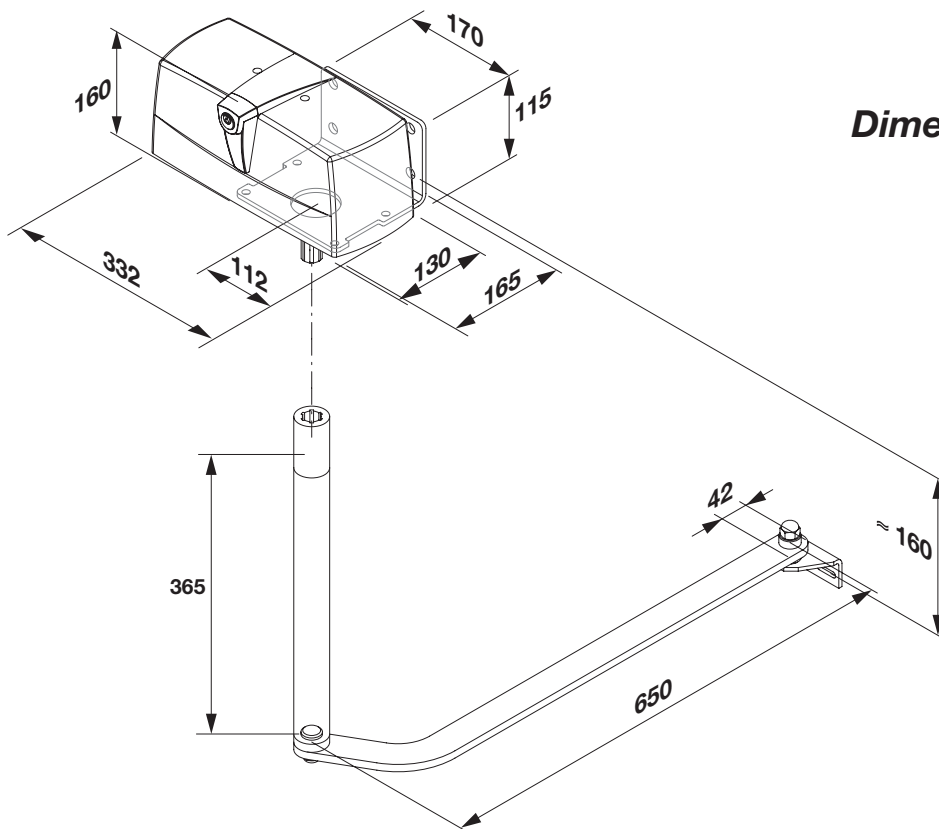
**Książeczka z instrukcjami i katalog części wymiennych**



UNIONE NAZIONALE COSTRUTTORI  
AUTOMATISMI PER CANCELLI, PORTE  
SERRANDE ED AFFINI

Dati tecnici	Technical data	Technische Daten	PREMIER	PREMIER L	PREMIER R	PREMIER 24
Alimentazione	<b>Power supply</b>	<i>Stromversorgung</i>	230 Vac	230 Vac	230 Vac	230 Vac
Alimentazione motore	<b>Motor feed</b>	<i>Motorspeisung</i>	230 Vac	230 Vac	230 Vac	24Vdc
Potenza assorbita	<b>Power drawn</b>	<i>Aufgenomm. Leistung</i>	170 W	170 W	170 W	120 W
Corrente assorbita	<b>Current drawn</b>	<i>Aufgenomm. Strom</i>	0,85 A	0,85 A	0,85 A	8 A
Coppia	<b>Torque</b>	<i>Drehmoment</i>	300 Nm	300 Nm	150 Nm	260 Nm
Classe isolamento mot.	<b>Motor insulation class</b>	<i>Schutzklasse des Mot.</i>	F	F	F	Y
Giri motore	<b>Motor r.p.m.</b>	<i>Motorendrehzahl</i>	1400 rpm	900 rpm	1400 rpm	1400 rpm
Giri uscita	<b>Output rounds</b>	<i>Drehzahl am Ausgang</i>	1,82 rpm.	1,17 rpm.	3,64 rpm.	1,82 rpm.
Peso max. anta	<b>Door leaf max. weight</b>	<i>Max. Türflügelgewicht</i>	300 kg	300 kg	200 kg	250 kg
Lunghezza max. anta	<b>Door leaf max.</b>	<i>Max. Flügelänge</i>	3 m	4 m	2 m	2,5m
Condensatore	<b>Capacitor</b>	<i>Kondensator</i>	8 µF	8µF	8µF	--
Rumorosità	<b>Noise level</b>	<i>Geräuschartwicklung</i>	<70 dB (A)	<70 dB (A)	<70 dB (A)	<70dB (A)
Lubrificazione	<b>Lubrication</b>	<i>Schmierung</i>	Agip GR MU EP/2	Agip GR MU EP/2	Agip GR MU EP/2	Agip GR MU EP/2
Grado IP	<b>IP class</b>	<i>IP Grad</i>	IP54	IP54	IP54	IP54
Temp. funzionamento	<b>Operating temp.</b>	<i>Betriebstemperatur</i>	-20°C/+70°C	-20°C/+70°C	-20°C/+70°C	-20°C/+70°C
Peso	<b>Weight</b>	<i>Gewicht</i>	13 kg	13 kg	13 kg	13 kg

Donnees technique	Datos técnicos	Dane techniczne	PREMIER	PREMIER L	PREMIER R	PREMIER 24
<b>Alimentation</b>	Alimentación	Zasilanie	230 Vac	230 Vac	230 Vac	230 Vac
<b>Alimentation moteur</b>	Alimentación del motor	Zasilanie silnika	230 Vac	230 Vac	230 Vac	24Vdc
<b>Puissance absorbée</b>	Consumo de potencia	Natężenie	170 W	170 W	170 W	120 W
<b>Courant absorbé</b>	Consumo de corriente	Pobór mocy	0,85 A	0,85 A	0,85 A	8 A
<b>Couple</b>	Par	Moment obrotowy	300 Nm	300 Nm	150 Nm	260 Nm
<b>Classe d'isolement</b>	Clase aislamiento mot.	Klasa izolacji silnika	F	F	F	Y
<b>Régime</b>	Revoluciones motor	Obroty silnika	1400 rpm	900 rpm	1400 rpm	1400 rpm
<b>N. de tours en sortie</b>	Revoluciones salida	Obroty wyjściowe	1,82 rpm.	1,17 rpm.	3,64 rpm.	1,82 rpm.
<b>Poids max. porte</b>	Peso máx. hoja	Ciężar max. skrzydła	300 kg	300 kg	200 kg	250 kg
<b>Longueur max. porte</b>	Longitud máx. hoja	Dł. max. skrzydła	3 m	4 m	2 m	2,5m
<b>Condensateur</b>	Condensador	Kondensator	8 µF	8 µF	8µF	--
<b>Bruit</b>	Ruido	Max. halas	<70 dB (A)	<70 dB (A)	<70 dB (A)	<70dB (A)
<b>Lubrification</b>	Lubrificación	Smarowanie	Agip GR MU EP/2	Agip GR MU EP/2	Agip GR MU EP/2	Agip GR MU EP/2
<b>Degré IP</b>	Índice IP	Stopień IP	IP54	IP54	IP54	IP54
<b>Temp. fonctionnement</b>	Temp. de funcionamiento	Temp. podczas pracy	-20°C/+70°C	-20°C/+70°C	-20°C/+70°C	-20°C/+70°C
<b>Poids</b>	Peso	Ciężar	13 kg	13 kg	13 kg	13 kg



**Dimensioni d'ingombro**  
**Overall dimensions**  
**Abmessungen**  
**Dimensions d'encombrement**  
**Dimensiones exteriores**  
**Wymiary gabarytowe**

Fig.1

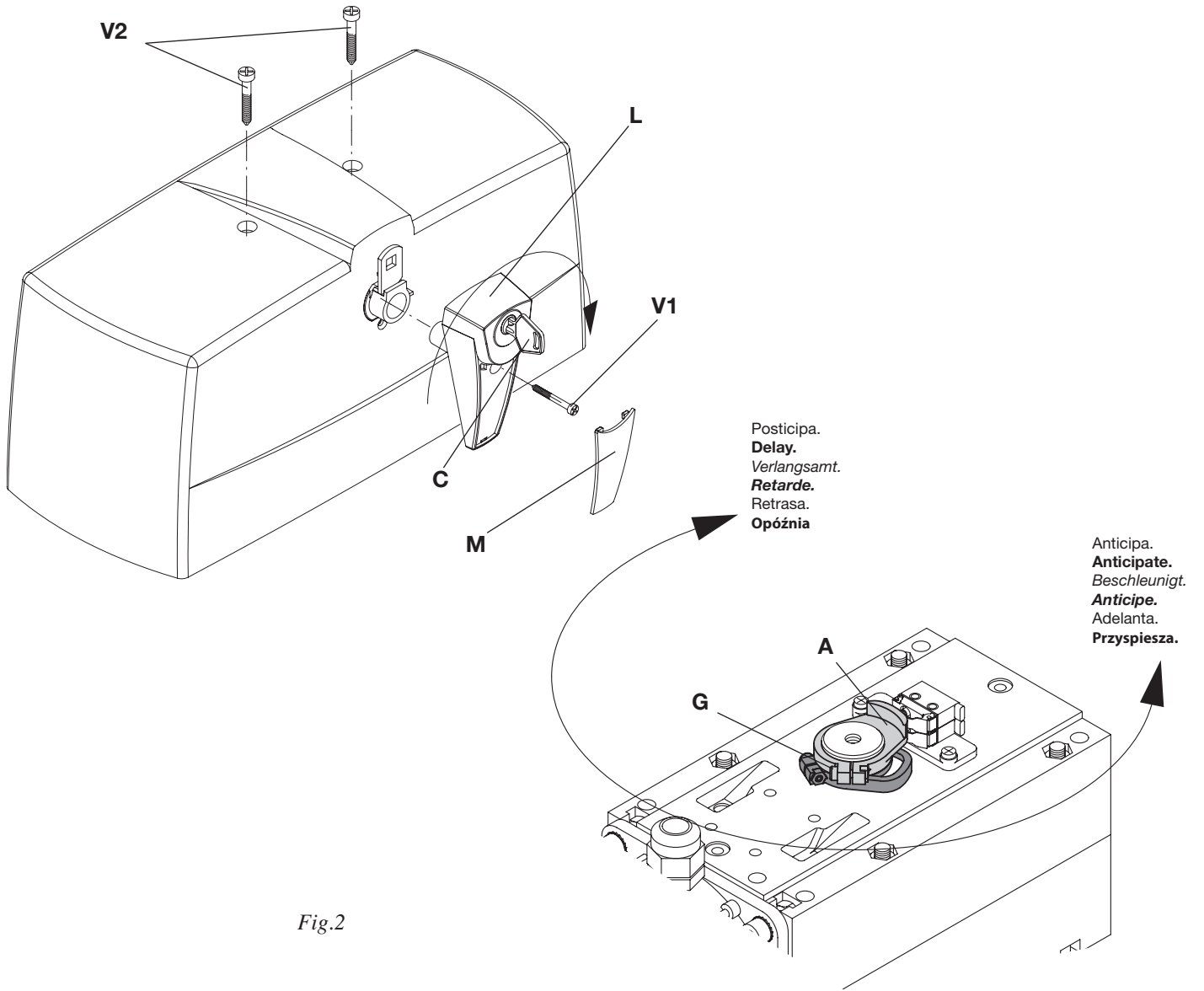


Fig.2

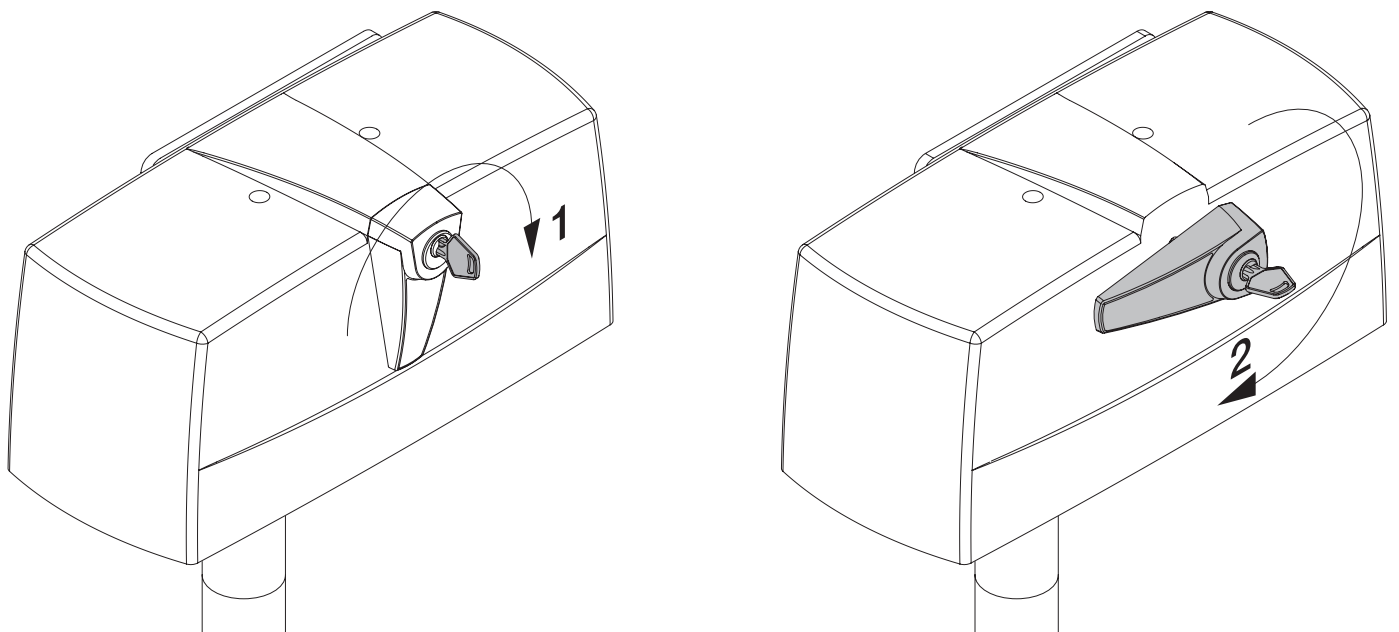


Fig.3

Sblocco a filo art. DU.MS45.

**Wire release art. DU.MS45.**

Freigabe über Draht DU.MS45.

**Débloccage à fil art. DU.MS45.**

Desbloqueo por cable art. DU.MS45

**Odblokowanie na linkę art. DU.MS45.**

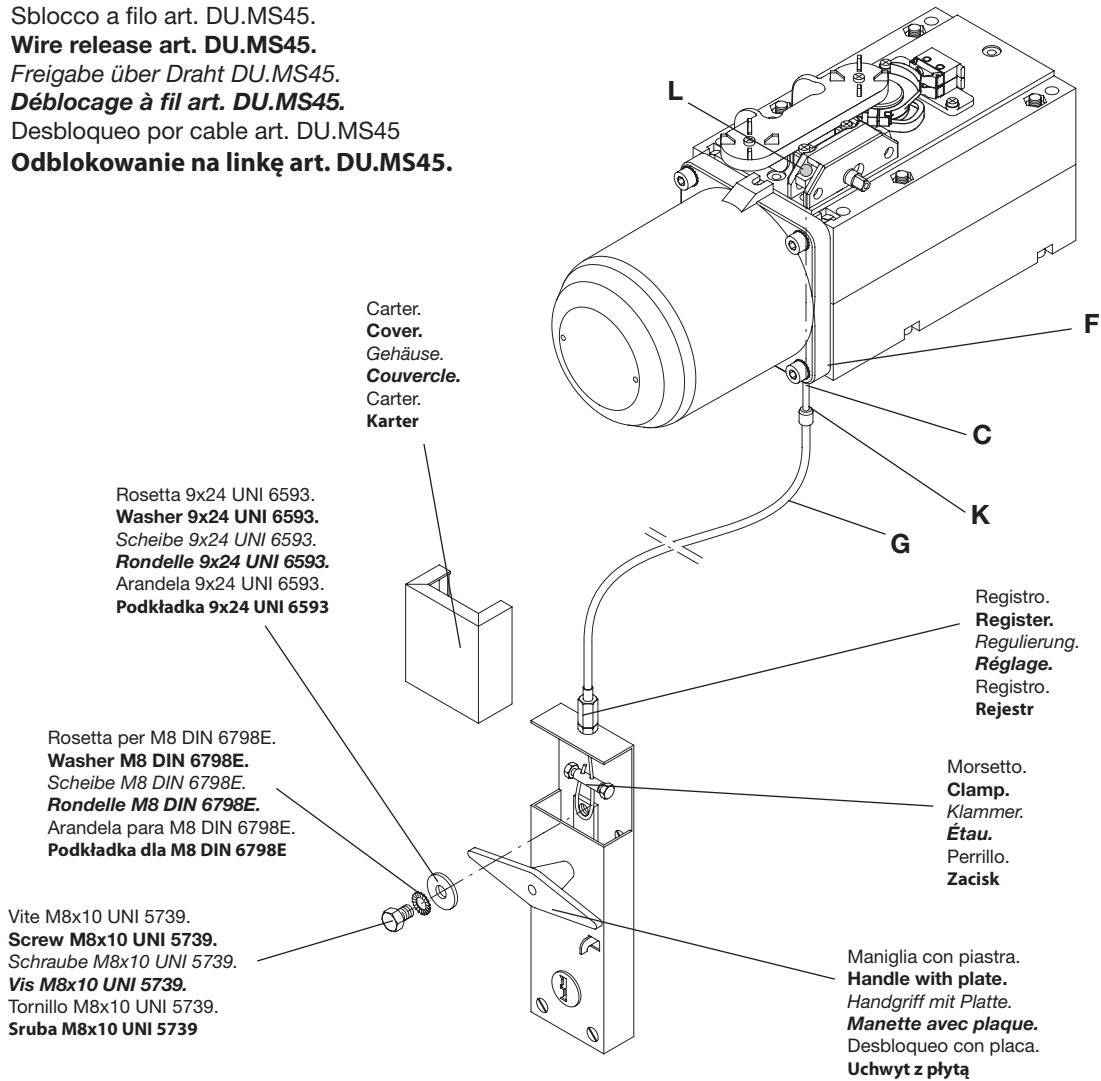
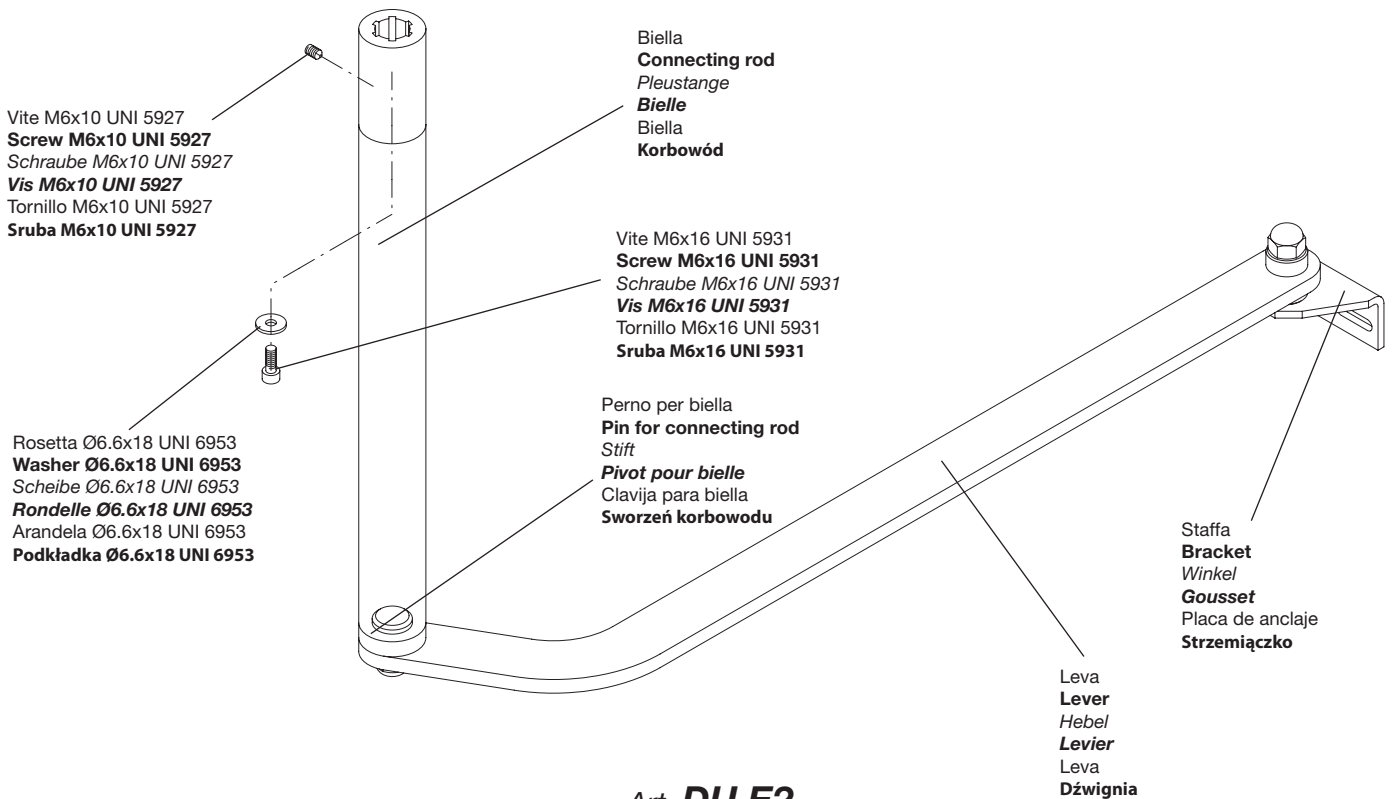
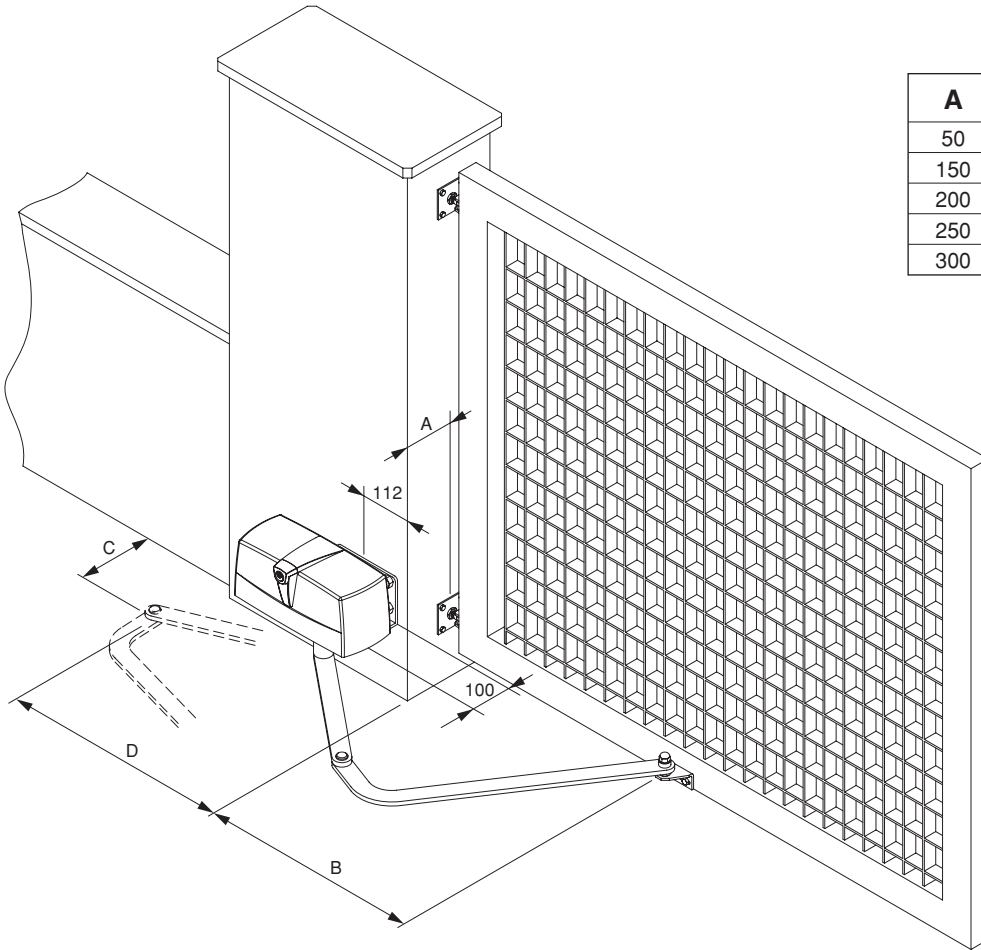


Fig.4



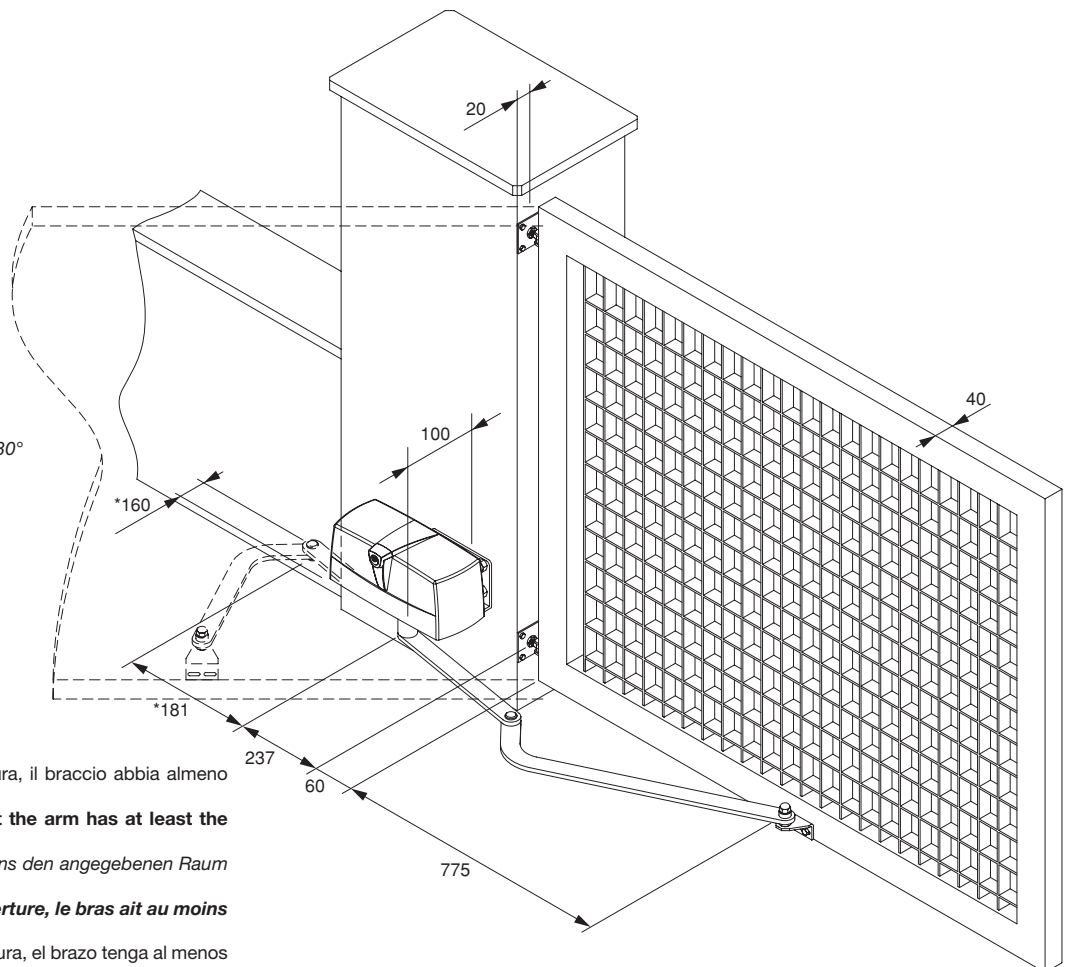
Art. **DU.E2**



A	B	C	D
50	883	277	429
150	851	181	466
200	828	117	475
250	800	32	469
300	846	28	468

Fig.5

Apertura 130° max.  
**Max 130° opening.**  
*Anbringung zum Öffnen, höchstens 130°*  
**Ouverture max. 130°**  
 Apertura 130° max.  
**Maks otwarcie 130°**



\* È necessario che all'atto dell'apertura, il braccio abbia almeno lo spazio segnalato.

**\* When opening it's necessary that the arm has at least the signaled space.**

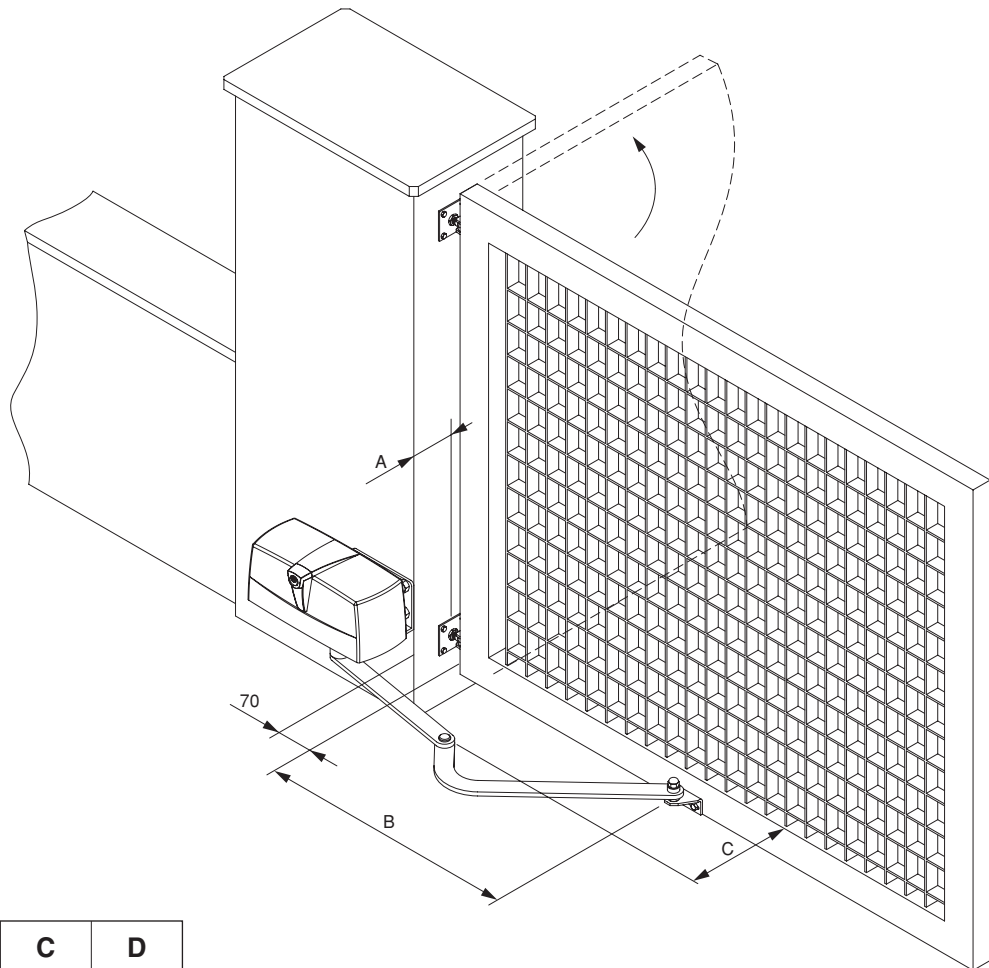
*\* Beim Öffnen muß der Arm wenigstens den angegebenen Raum haben.*

**\* Il est nécessaire que lors de l'ouverture, le bras ait au moins l'espace signalé.**

*\* Es necesario que en el acto de apertura, el brazo tenga al menos el espacio señalado.*

**\* Konieczne jest, żeby podczas otwierania skrzydło miało do dyspozycji zaznaczony obszar manewru.**

Fig.6



A	B	C	D
50	688	390	154
100	651	453	137
150	606	503	135
200	550	553	138

Fig.7

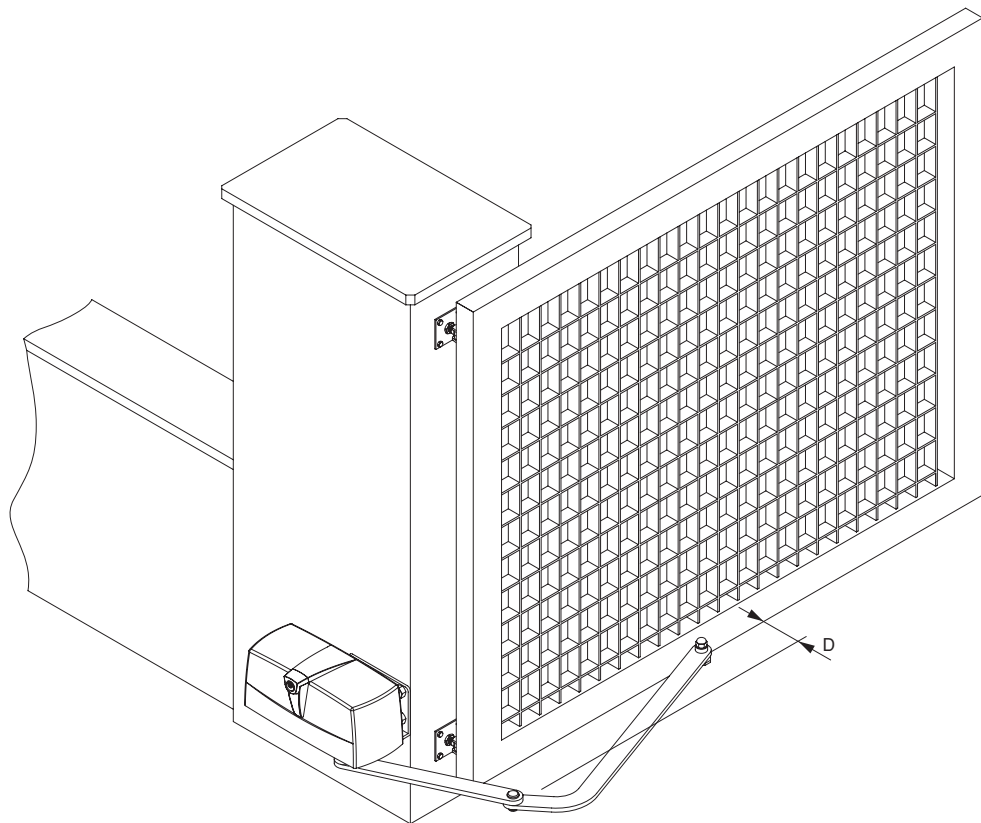
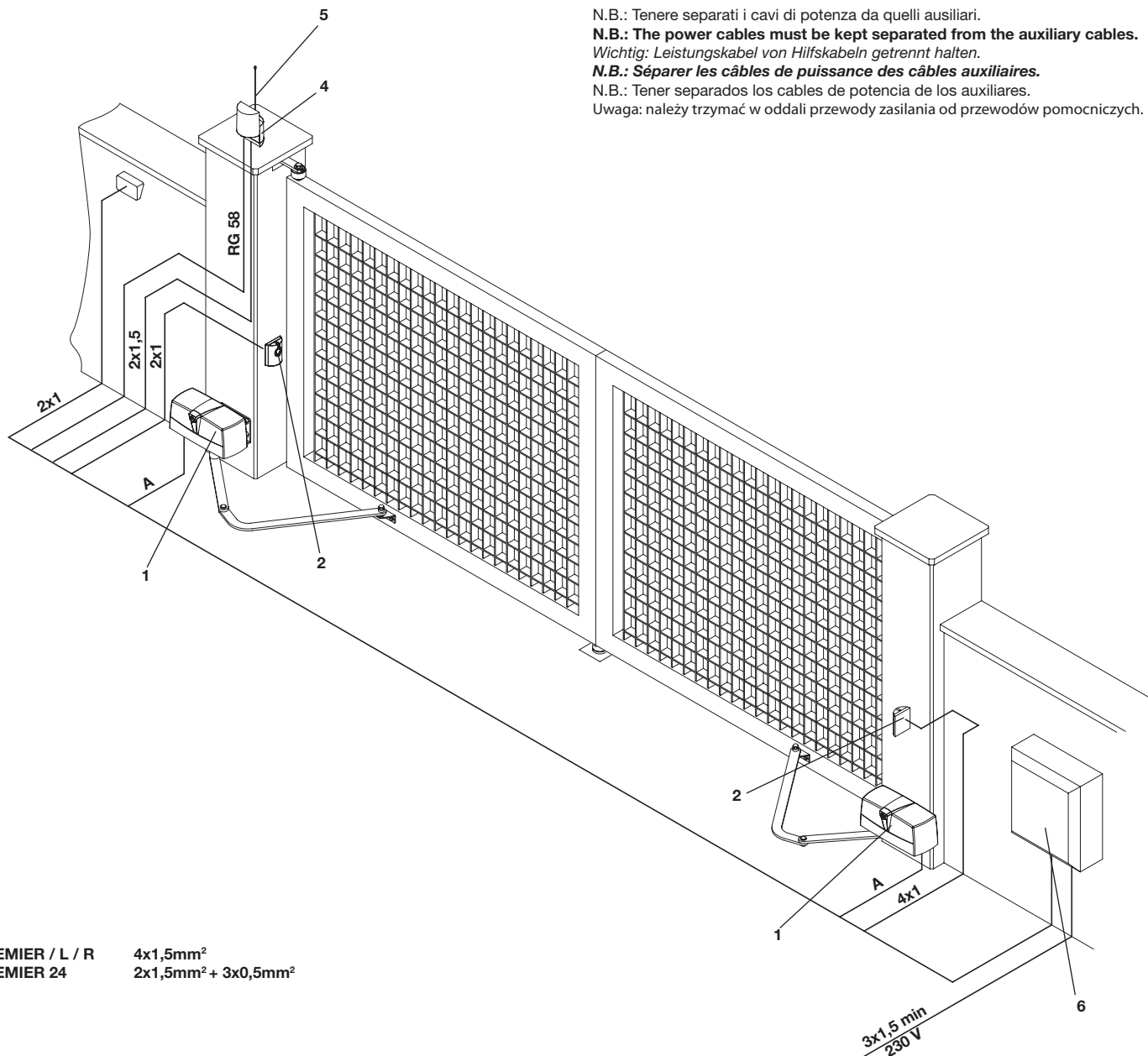


Fig.8



N.B.: Tenere separati i cavi di potenza da quelli ausiliari.  
**N.B.: The power cables must be kept separated from the auxiliary cables.**  
 Wichtig: Leistungskabel von Hilfskabeln getrennt halten.  
**N.B.: Séparer les câbles de puissance des câbles auxiliaires.**  
 N.B.: Tener separados los cables de potencia de los auxiliares.  
 Uwaga: należy trzymać w oddali przewody zasilania od przewodów pomocniczych.

<b>A</b>	
<b>PREMIER / L / R</b>	<b>4x1,5mm<sup>2</sup></b>
<b>PREMIER 24</b>	<b>2x1,5mm<sup>2</sup> + 3x0,5mm<sup>2</sup></b>

**Legenda:**

- 1 Motoriduttore PREMIER
- 2 Fotocellule FTC/FTM
- 3 Selettore a chiave CH (da esterno) o tastiera digitale
- 4 Lampeggiante LAMP
- 5 Antenna AW
- 6 Centrale elettronica.

**Legenda:**

- 1 Motoreducer PREMIER**
- 2 Photo-electric cells FTC/FTM**
- 3 Key selector CH (external) or digital keyboard**
- 4 Flash-light LAMP**
- 5 Antenna AW**
- 6 Electronic board.**

**Zeichenerklärung:**

- 1 Getriebemotor PEMIERE
- 2 Fotozelle FTC/FTM
- 3 Schlüssel-Selektor CH (außenliegend) oder Digital-Tastatur
- 4 Blinker LAMP
- 5 Antenne AW
- 6 Elektroschrank.

**Légende:**

- 1 Moteur-réducteur PREMIER**
- 2 Photocellule FTC/FTM**
- 3 Selecteur à clé CH (d'extérieur) ou clavier digital**
- 4 Clignotant LAMP**
- 5 Antenne AW**
- 6 Centrale électronique.**

**Leyenda:**

- 1 Motorreductor PREMIER
- 2 Fotocélulas FTC/FTM
- 3 Selectores a llave CH (de superficie).
- 4 Relampagueador LAMP.
- 5 AntenaAW.
- 6 Central electrónica.

**Objaśnienia:**

- 1 Siłownik PREMIER
- 2 Fotokomórki FTC/FTM
- 3 Przełącznik kluczowy CH (zewnętrzny) lub panel z przyciskami
- 4 Światło migające LAMP
- 5 Antena AW
- 6 Centralka elektroniczna

## Warning

- Before installation, carefully read the instructions hereunder.
- It is strictly forbidden to use the item PREMIER for applications other than the intended uses described in these instructions.
- Instruct the user on how to use the system.

## Introduction

Thank you for choosing our PREMIER ratiomotor. All items in the wide Benincà production range are the result of twenty-years' experience in the automatism sector and of continuous research for new materials and advanced technologies. We are, therefore, in the position to offer highly reliable products that due to their power, effectiveness and useful life, fully satisfy the final user's requirements.

All our products are manufactured to the existing standard and are covered by warranty. Possible injury to people or accidents caused by defects in construction are covered by a civil liability policy drawn up with one of the major insurance companies.

## General notes

For a good operation of the automatic system the door to be automated must feature the following characteristics:

- Rugged and stiff door leaves.
- Efficient hinges.
- The door leaves should be moved by hand without any friction for the entire stroke.
- The doors should be complete with a catch in the closing phase.

In the negative, replace the faulty parts. Reliability and safety of the automatic system depend on the gate structure.

## General features

This automatism has been designed to automatize doors, the dimensions of which do not allow to use traditional actuators.

It is equipped with an articulated arm and with a limit switch, (PREMIER). The operations are smooth and noiseless. It is easy to be assembled and, thanks to its pleasant design, it meets the most demanding needs. The emergency block is simple and safe thanks to the lever with personalised key.

## Connections

### PREMIER/PREMIER L / PREMIER R:

Brown	Motor phase and capacitor
Grey or Light blue	Common
Black	Motor phase and capacitor
Yellow/Green	Earth - compulsory pursuant to regulations in force

The limit switch contacts are connected in series to the two motor phases. If, after an opening control, the motor starts the closing movement, it is sufficient to reverse the brown wire with the black one in the control unit.

### PREMIER 24:

Red	Motor +
Black	Motor -

Carry out the limit switch connections to the control unit.

If, after an opening control, the motor starts the closing movement, it is sufficient to reverse the red wire with the black one in the control unit.

As regards the torque adjustments and the operating modes, please read instructions given in the control unit manual.

## To adjust the limit switches (Fig. 3)

The PREMIER unit is equipped with built-in limit switches for both opening and closing phases. Proceed as follows:

- Release the actuator (see paragraph "Release by hand")
- Remove the cover M from the release lever L.
- Loosen the screw V1 and remove the release lever L.
- Loosen the screws V2 and remove the cover.



- Close the gate until it touches the stopper.
- Loosen the fitting screw of the cam and adjust the cam until triggering of the micro-switch.
- The same operation should be carried out with the other cam, with completely open gate.
- Reset the automatic operation and check the correct positioning of the cams by opening and closing the gate for a few times.
- Tighten the fixing screws of the cams.

Note:

The PREMIER /R/L (230Vac) models feature a thrust of some seconds on the stoppers without damaging the gear motor. If required, it is therefore possible to select the timed operation, thus excluding the limit switches.

In the PREMIER 24 model, cams should be adjusted and limit switches should be connected to the control unit.

### **Release by hand**

As regards the manual operation, should a power failure occur two solutions are available for the PREMIER unit :

#### **Release from inside (Fig. 3)**

- Insert the customised key C, and turn it clockwise.
- Turn the release lever L for at least 90° clockwise.
- At this point, the reduction gear is released and the gate can be moved by hand.
- To reset the normal operation, move the lever L to the original position and turn key C anti-clockwise. When the unit is powered again, the normal operating mode will be reset with the first movement of the gate.

#### **Internal-external release with cord (Item DU.MS45) (Fig. 4 - optional)**

- Insert the steel cable C on lever L.
- Introduce the sheath G with the cable gland K until it reaches the hole F.
- Fit the steel cable C in the handle, according to Fig. 4.
- Turn the handle to release.
- By turning the handle again, the first operation will reset the normal operating mode.

### **Applications**

Application suitable to max 90° opening inward (fig. 5).

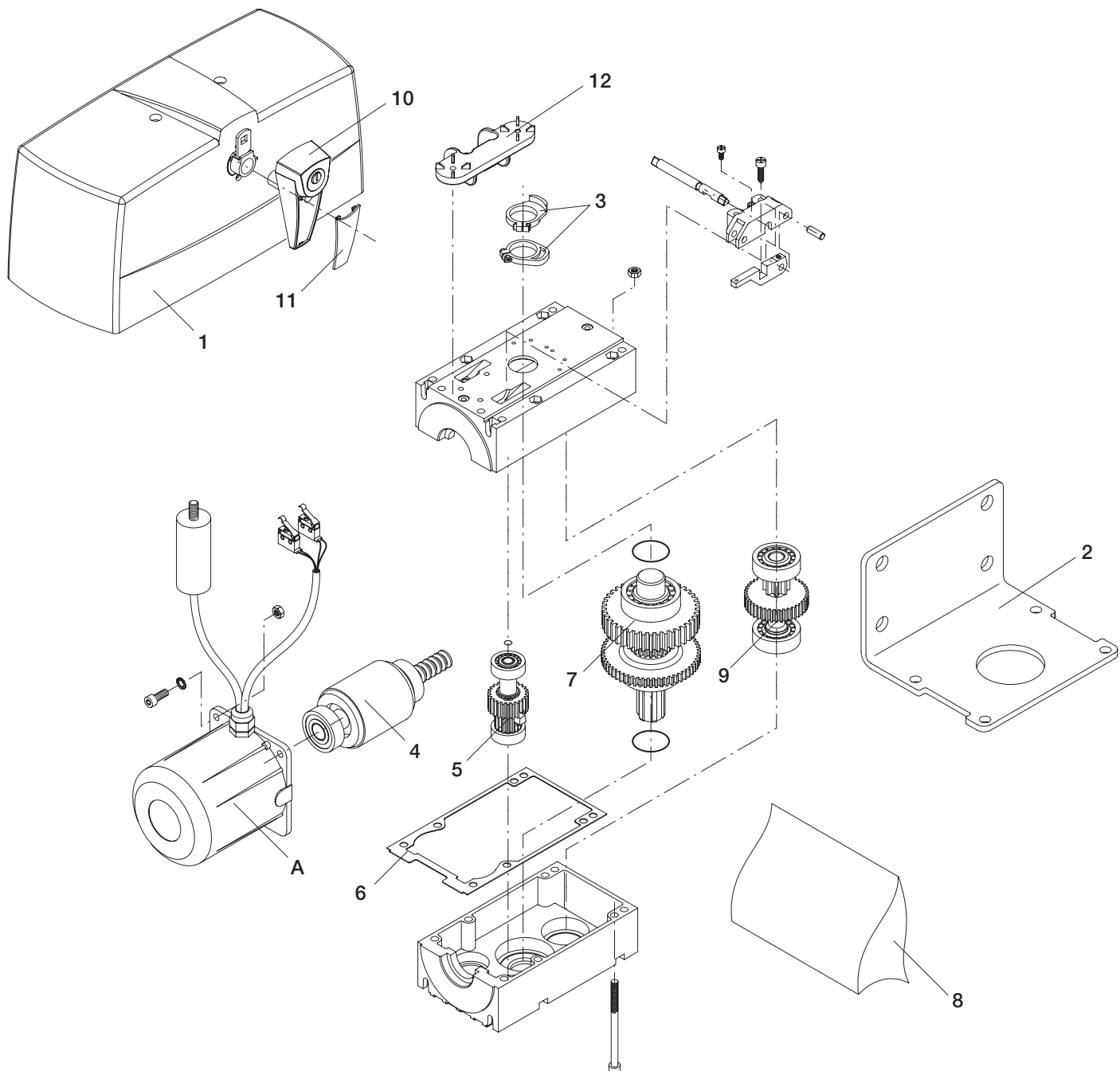
Application suitable to max 130° opening (fig. 6).

P.N. When opening it's necessary that the arm has at least the signaled space.

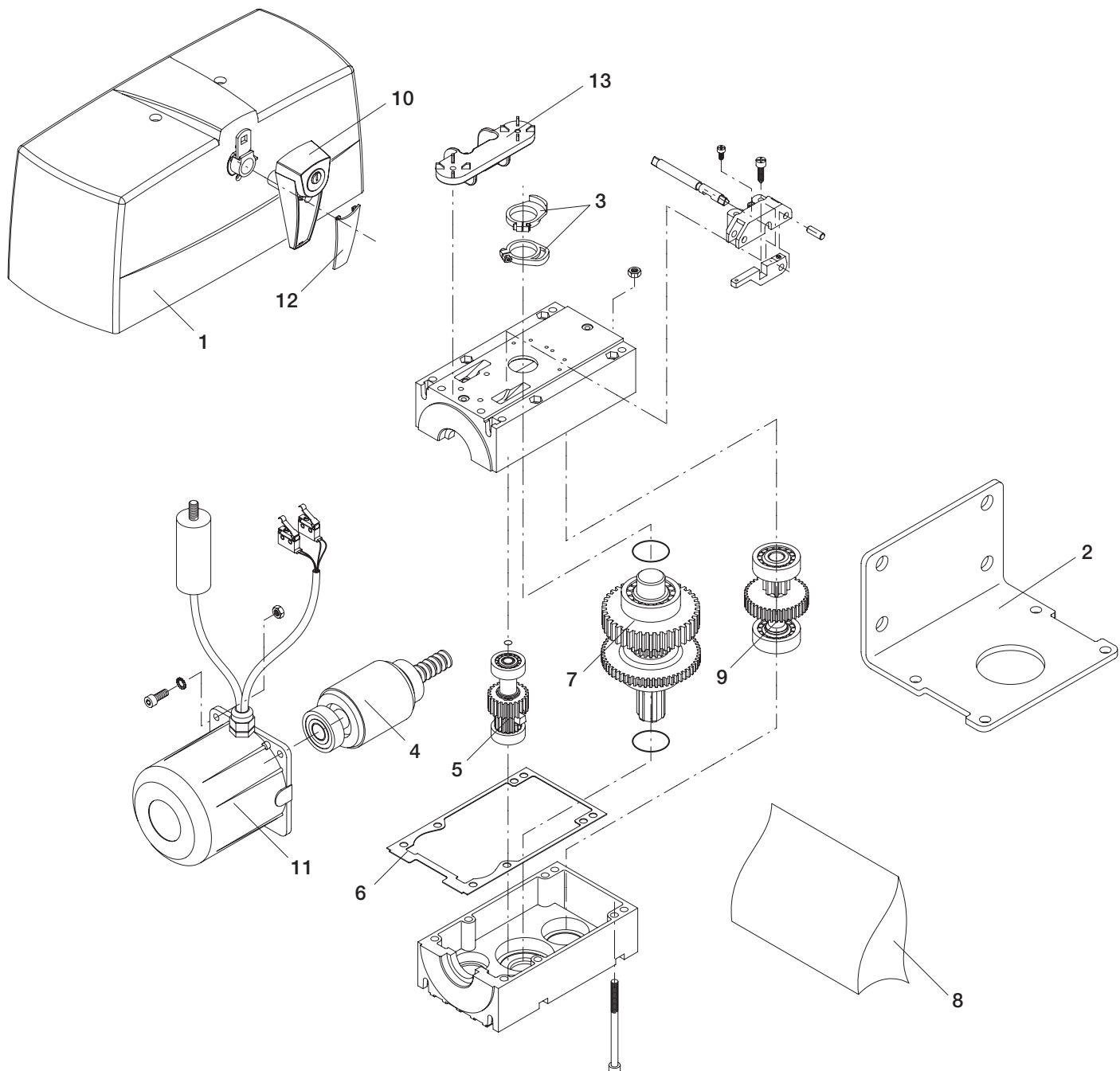
Application suitable to opening to the outside (figg. 7 - 8).

### **CAUTION**

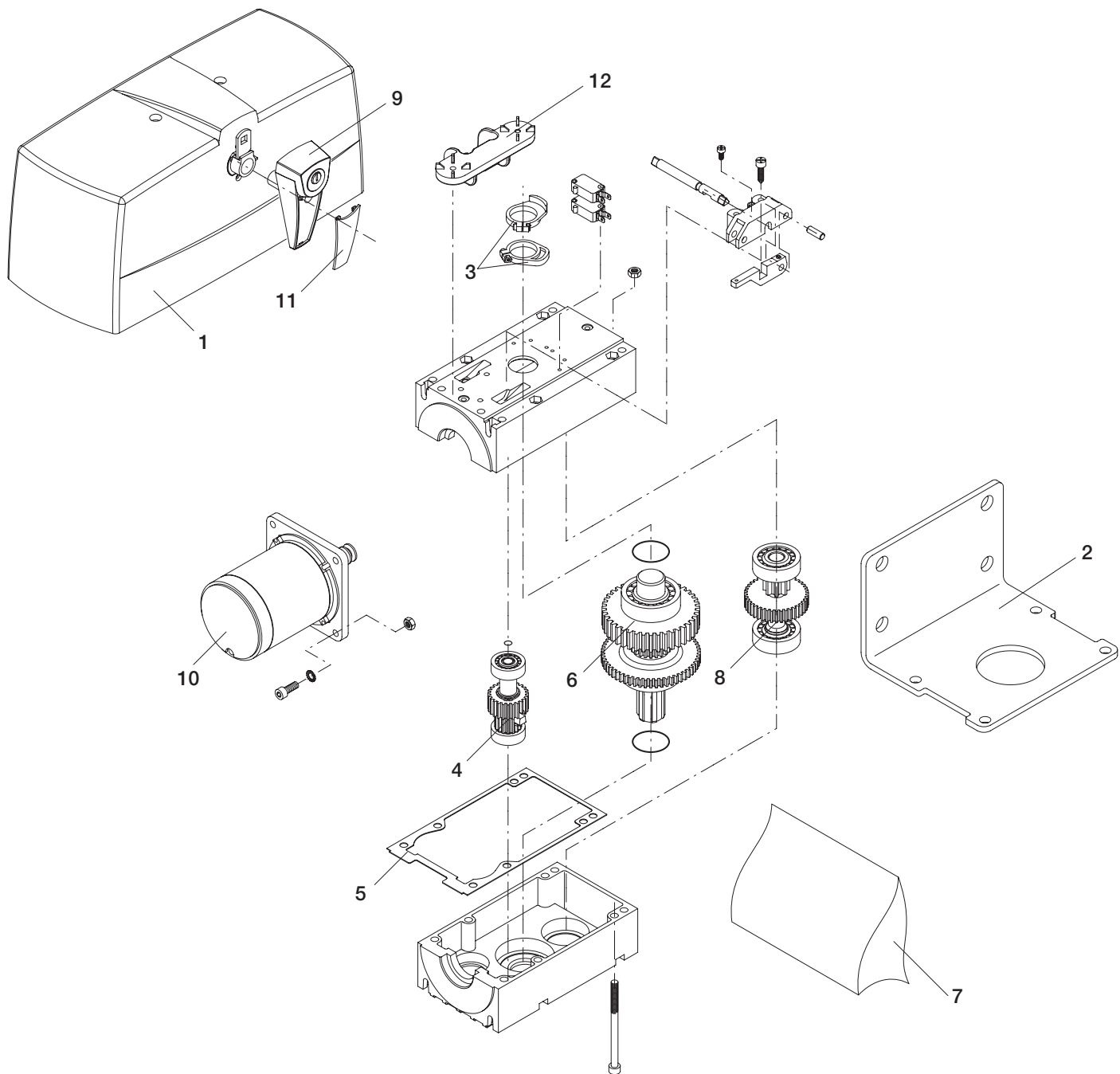
The civil liability policy, which covers possible injuries to people or accidents caused by defects in construction, requires the system to be to existing standard and to use original Benincà accessories.



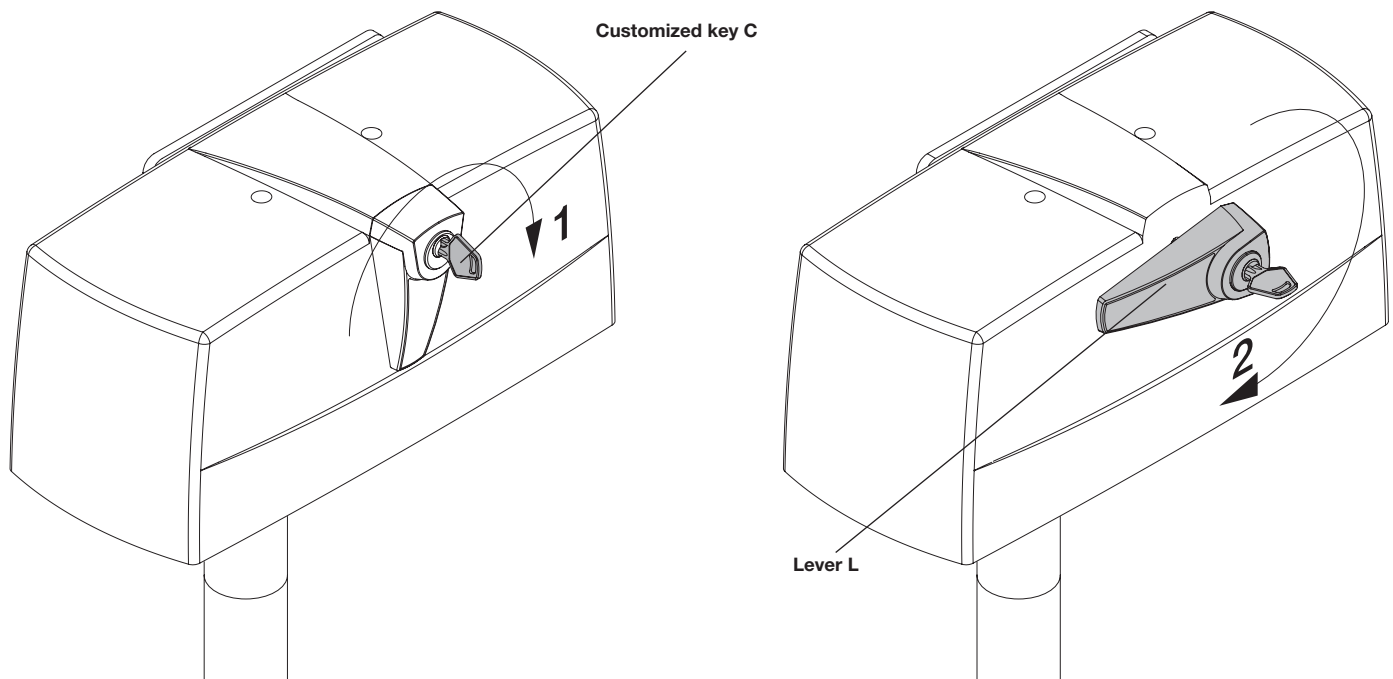
Pos.	PREMIER - PREMIER L						Cod.
	Denominazione - Description - Bezeichnung - Dénomination - Denominación - Określenie						
1	Carter	<b>Cover</b>	<i>Deckel</i>	<b>Couvercle</b>	Tapa	Karter	9686355
2	Piastra	<b>Plate</b>	<i>Platte</i>	<b>Plaque</b>	Placa	Płyta	9686129
3	Camme finec.	<b>Limit stop cam</b>	<i>Nocke</i>	<b>Came</b>	Levas fin. d. car.	Krańcówka	9686158
4	Albero motore	<b>Shaft</b>	<i>Welle mit Rotor</i>	<b>Arbre moteur</b>	Eje motor	Wał korbowy	9686168
5	Pignone	<b>Gear</b>	<i>Zahnrad</i>	<b>Engrenage</b>	Piñon	Koło zębate	9686170
6	Guarnizione	<b>Gasket</b>	<i>Dichtung</i>	<b>Guarniture</b>	Junta	Uszczelka	9686169
7	Albero d'uscita	<b>Output shaft</b>	<i>Welle</i>	<b>Arbre</b>	Eje de salida	Wał wyjściowy	9686132
8	Blister	<b>Blister</b>	<i>Blister</i>	<b>Blister</b>	Blister	Blister	9686354
9	Pignone	<b>Gear</b>	<i>Zahnrad</i>	<b>Engrenage</b>	Piñon	Koło zębate	9686011
10	Leva sblocco	<b>Release lever</b>	<i>Hebel</i>	<b>Levier</b>	Pal. de desbloq.	Dźwigienka	9686356
11	Piastrina	<b>Plate</b>	<i>Plättchen</i>	<b>Platine</b>	Plaqueta	Płytką	9686357
12	Staffa	<b>Bracket</b>	<i>Bügel</i>	<b>Bride</b>	Soporte	Strzemiączko	9686358
A	Calotta PREMIER	<b>Motor cup</b>	<i>Motordeckel</i>	<b>Calotte moteur</b>	Estator	Silnik	9686131
	Calotta PREMIER L	<b>Motor cup</b>	<i>Motordeckel</i>	<b>Calotte moteur</b>	Estator	Silnik	9686133



Pos.	PREMIER R						Cod.
	Denominazione	Description	Bezeichnung	Dénomination	Denominación	Określenie	
1	Carter	<b>Cover</b>	<i>Deckel</i>	<b>Couvercle</b>	Tapa	Karter	9686355
2	Piastra	<b>Plate</b>	<i>Platte</i>	<b>Plaque</b>	Placa	Płyta	9686129
3	Camme finec.	<b>Limit stop cam</b>	<i>Nocke</i>	<b>Came</b>	Levas fin. d. car.	Krańcówka	9686158
4	Albero motore	<b>Shaft</b>	<i>Welle mit Rotor</i>	<b>Arbre moteur</b>	Eje motor	Wał korbowy	9686134
5	Pignone	<b>Gear</b>	<i>Zahnrad</i>	<b>Engrenage</b>	Piñon	Koło zębate	9686959
6	Guarnizione	<b>Gasket</b>	<i>Dichtung</i>	<b>Guarniture</b>	Junta	Uszczelka	9686169
7	Albero d'uscita	<b>Output shaft</b>	<i>Welle</i>	<b>Arbre</b>	Eje de salida	Wał wyjściowy	9686132
8	Blister	<b>Blister</b>	<i>Blister</i>	<b>Blister</b>	Blister	Blister	9686354
9	Pignone	<b>Gear</b>	<i>Zahnrad</i>	<b>Engrenage</b>	Piñon	Koło zębate	9686011
10	Leva sblocco	<b>Release lever</b>	<i>Hebel</i>	<b>Levier</b>	Pal. de desbloq.	Dźwigienka	9686356
11	Calotta	<b>Motor cup</b>	<i>Motordeckel</i>	<b>Calotte moteur</b>	Estator	Silnik	9686131
12	Piastrina	<b>Plate</b>	<i>Plättchen</i>	<b>Platine</b>	Plaqueta	Płytką	9686357
13	Staffa	<b>Bracket</b>	<i>Bügel</i>	<b>Bride</b>	Soporte	Strzemiączko	9686358



Pos.	PREMIER 24						Cod.
	Denominazione	Description	Bezeichnung	Dénomination	Denominación	Określenie	
1	Carter	<b>Cover</b>	<i>Deckel</i>	<b>Couvercle</b>	Tapa	Karter	9686355
2	Piastra	<b>Plate</b>	<i>Platte</i>	<b>Plaque</b>	Placa	Płyta	9686129
3	Camme finec.	<b>Limit stop cam</b>	<i>Nocke</i>	<b>Came</b>	Levas fin. d. car.	Krańcówka	9686158
4	Pignone	<b>Gear</b>	<i>Zahnrad</i>	<b>Engrenage</b>	Piñon	Koło zębate	9686170
5	Guarnizione	<b>Gasket</b>	<i>Dichtung</i>	<b>Guarniture</b>	Junta	Uszczelka	9686169
6	Albero d'uscita	<b>Output shaft</b>	<i>Welle</i>	<b>Arbre</b>	Eje de salida	Wał wyjściowy	9686132
7	Blister	<b>Blister</b>	<i>Blister</i>	<b>Blister</b>	Blister	Blister	9686354
8	Pignone	<b>Gear</b>	<i>Zahnrad</i>	<b>Engrenage</b>	Piñon	Koło zębate	9686011
9	Leva sblocco	<b>Release lever</b>	<i>Hebel</i>	<b>Levier</b>	Pal. de desbloq.	Dźwigienka	9686356
10	Motore	<b>Motor</b>	<i>Motor</i>	<b>Moteur</b>	Motor	Silnik	9686167
11	Piastrina	<b>Plate</b>	<i>Plättchen</i>	<b>Platine</b>	Plaqueta	Płytką	9686357
12	Staffa	<b>Bracket</b>	<i>Bügel</i>	<b>Bride</b>	Soporte	Strzemiączko	9686358



## Safety rules

- Do not stand in the movement area of the door.
- Do not let children play with controls and near the door.
- Should operating faults occur, do not attempt to repair the fault but call a qualified technician.

## Manual and emergency operation

To manually open or close the door in case of power failure or faults, two solutions are possible:

### • Built-in release

- Insert the customised key C, and turn it clockwise.
- Turn the release lever L for at least 90° clockwise.
- At this point, the reduction gear is released and the gate can be moved by hand.
- To reset the normal operation, move the lever L to the original position and turn key C anti-clockwise. When the unit is powered again, the normal operating mode will be reset with the first movement of the gate.

### • Rope external release: optional

It is available for fitting to external wall or with accessory to be mounted flush.

## Maintenance

- Every month check the good operation of the emergency manual release.
- It is mandatory not to carry out extraordinary maintenance or repairs as accidents may be caused. These operations must be carried out by qualified personnel only.
- The operator is maintenance free but it is necessary to check periodically if the safety devices and the other components of the automation system work properly. Wear and tear of some components could cause dangers.

## Waste disposal

If the product must be dismantled, it must be disposed according to regulations in force regarding the differentiated waste disposal and the recycling of components (metals, plastics, electric cables, etc..). For this operation it is advisable to call your installer or a specialised company.

## Warning

All Benincá products are covered by insurance policy for any possible damages to objects and persons caused by construction faults under condition that the entire system be marked CE and only Benincá parts be used.