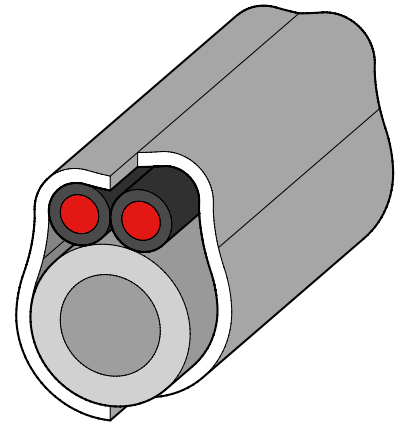


FITTING GUIDE

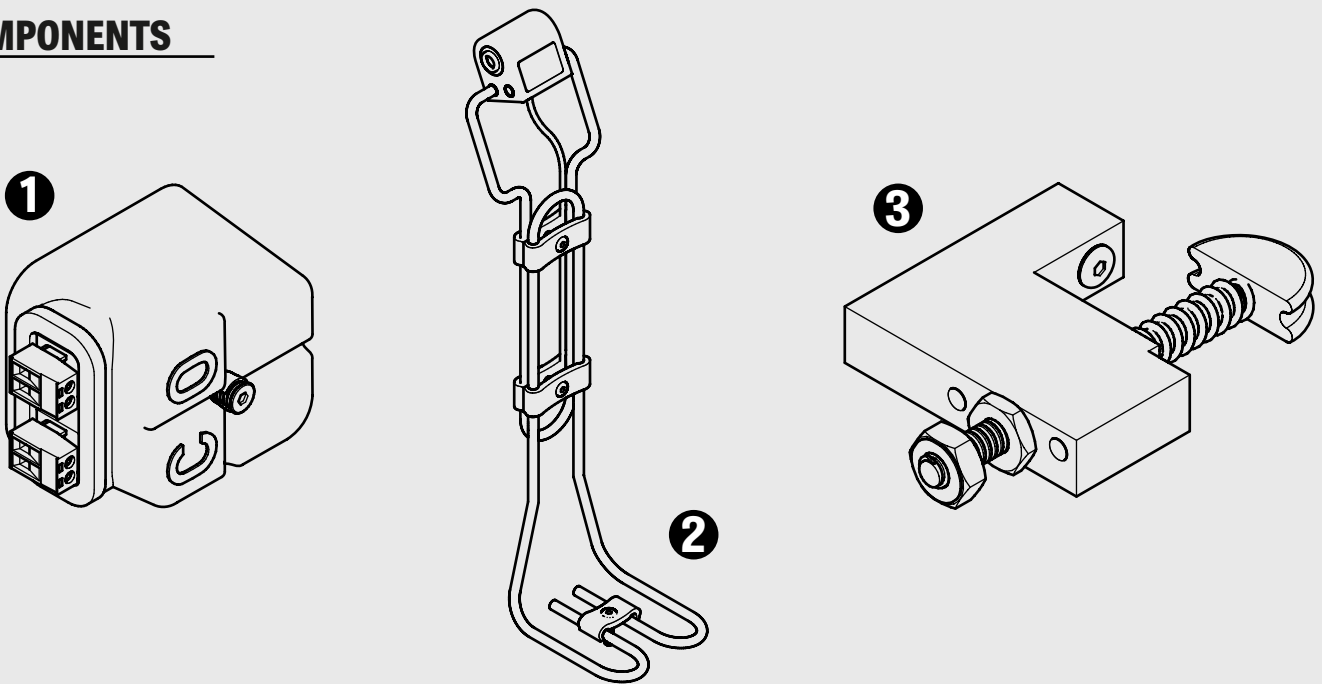
So far, the cable of the contact edge (**OPEN/CLOSE**) had to be installed along the gates entire length to connect it to the travelling coil core (**SPK 54**).

A new steel cable with an **additional 2 cores** is now included in each kit, which helps reduce fitting time. One end is pre-assembled with connectors for the travelling coil. An extra pair of waterproof connectors is included at the tensioner to connect the rear travelling safety edge.

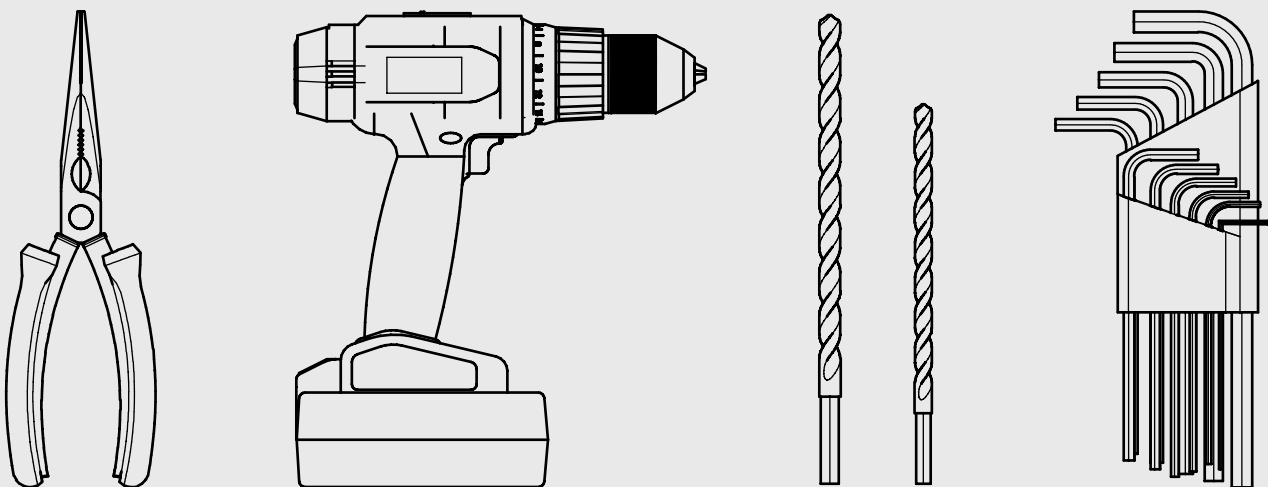
This allows safety edges at each end of the gate to be connected to the travelling coil easily, without the need to run a long connecting cable through or along the gate.



COMPONENTS



REQUIRED TOOLS



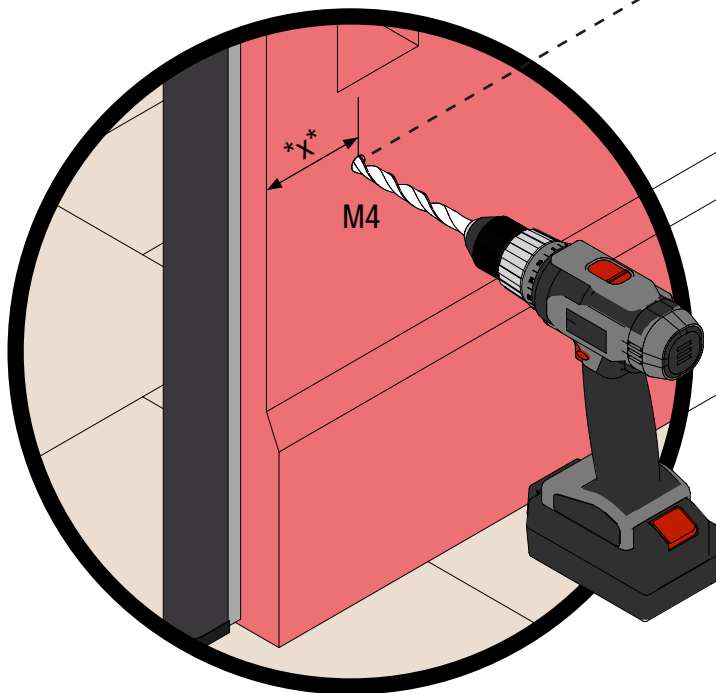
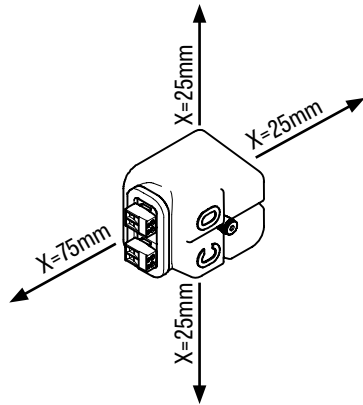
Cutters

Drill

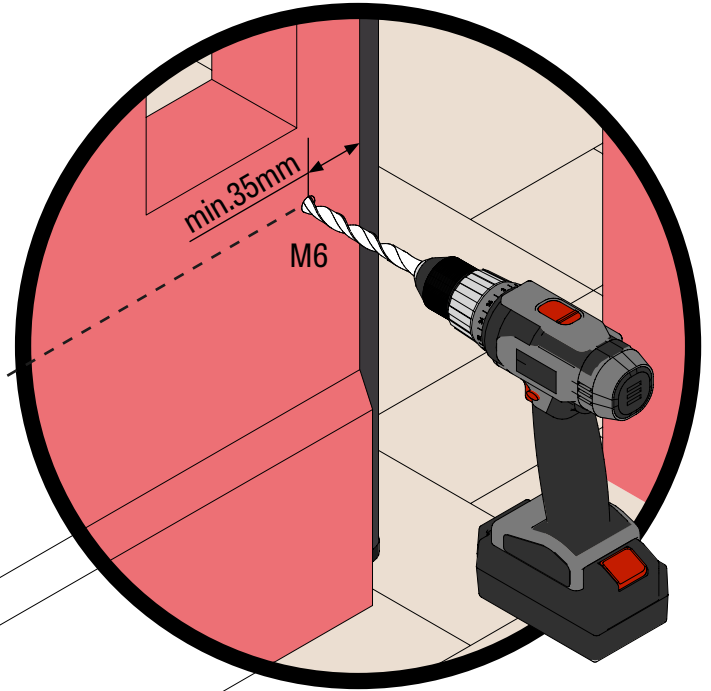
M4 & M6 Tap bits

Allen Keys

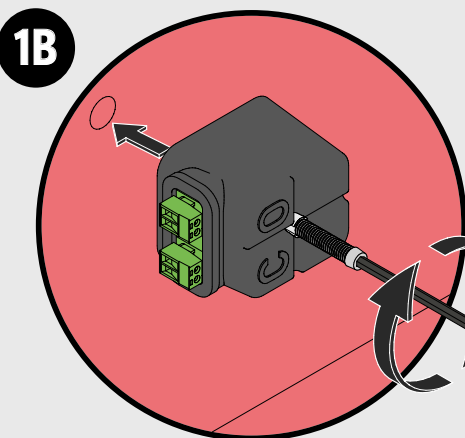
FITTING GUIDE



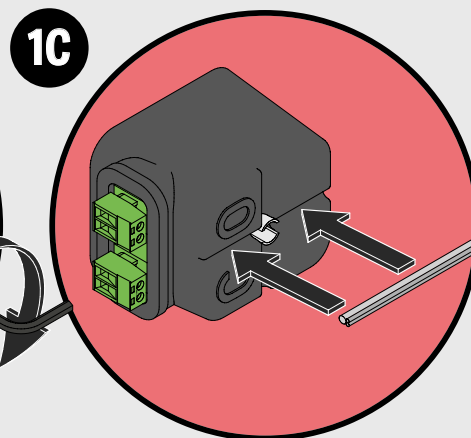
1A Drill and tap M4 Hole



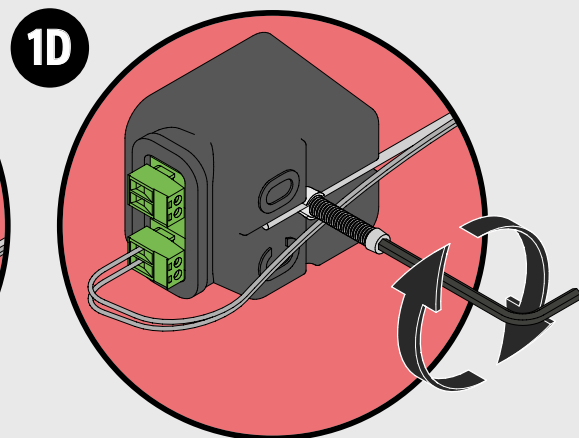
3A Drill and tap M6 Hole or bolt/tek screw



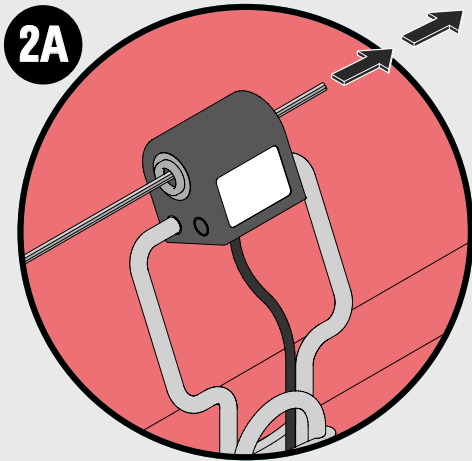
Screw in the provided allen head bolt.
!DO NOT OVER TIGHTEN!
1,5-2 Nm



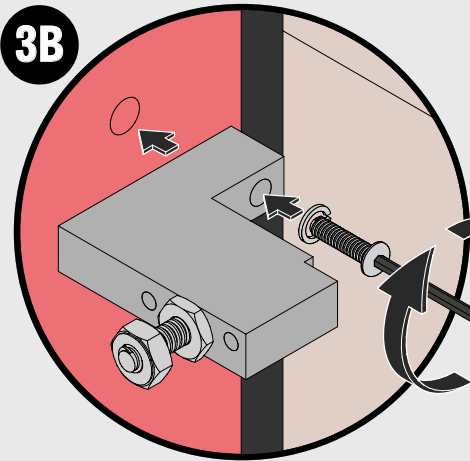
Place the transmission cable in slot gap.



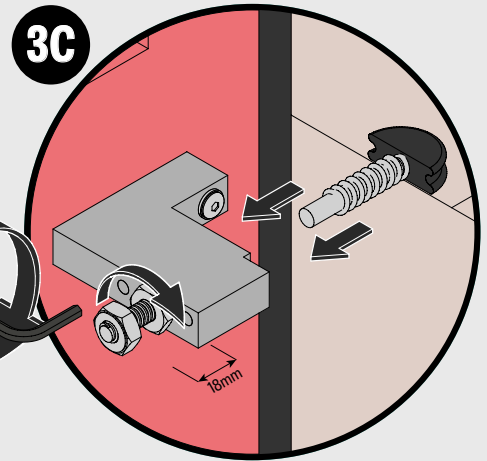
Strip back the insulation and plug cable cores into plug terminals.
!ONLY CLAMP THE STEEL CABLE!
1,5-2 Nm



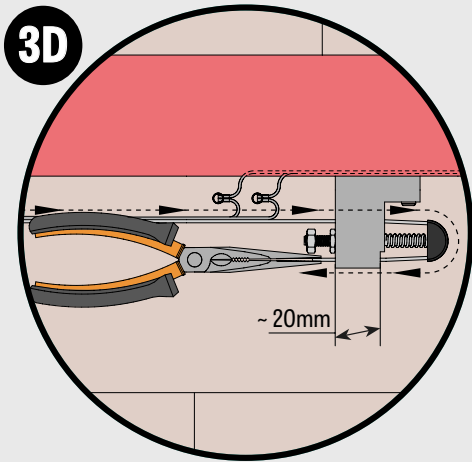
Pass the cable through the stationary SPK coil.



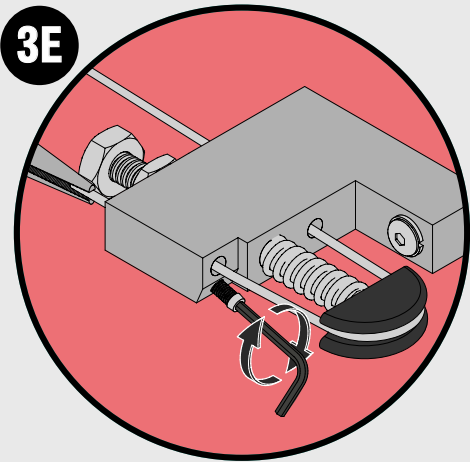
Fix tension bracket with an M6 or a similar bolt.
1,5-2 Nm



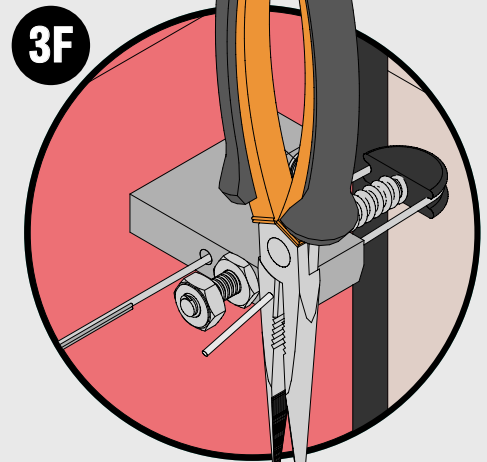
Fit the clamping unit into the tension bracket



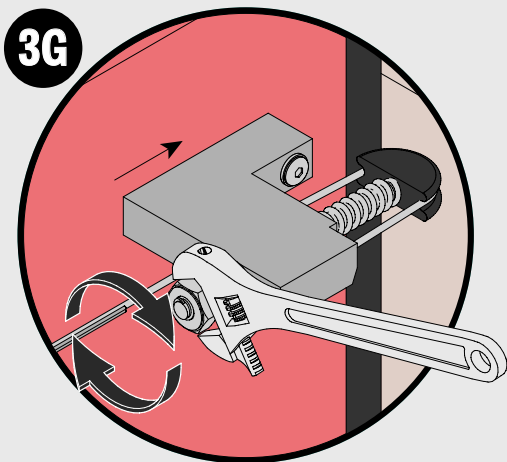
Pull the Cable through the tension bracket and clamp.
!CABLE SHOULD NOT BE LOOSE!



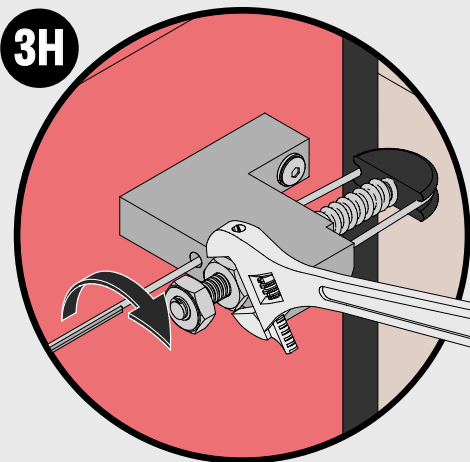
Clamp down the allen head screw.
!DO NOT OVER TIGHTEN!
1,5 Nm



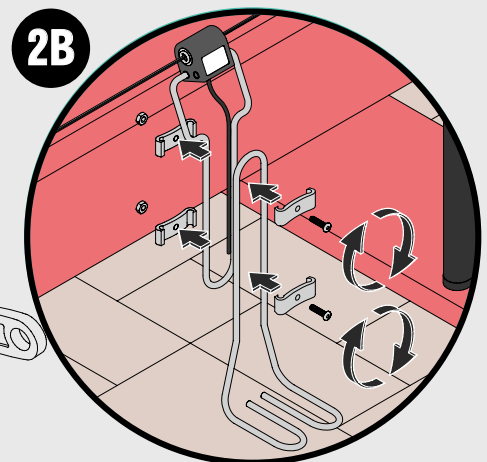
Trim away excess steel cable.



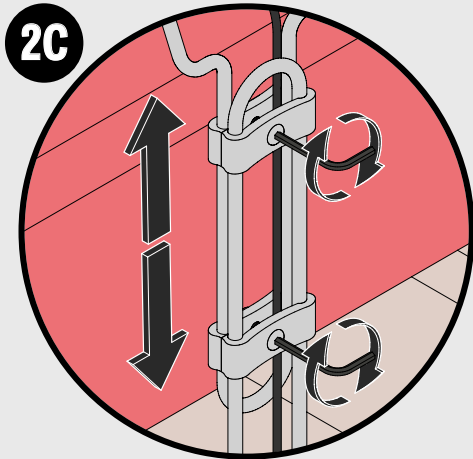
Adjust the clamp unit.



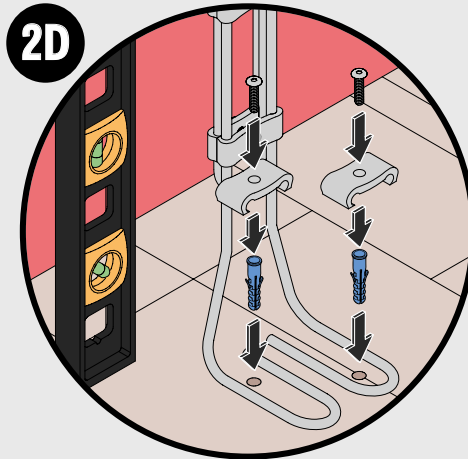
Tighten the clamp unit to hold everything in place.
1,5-2 Nm



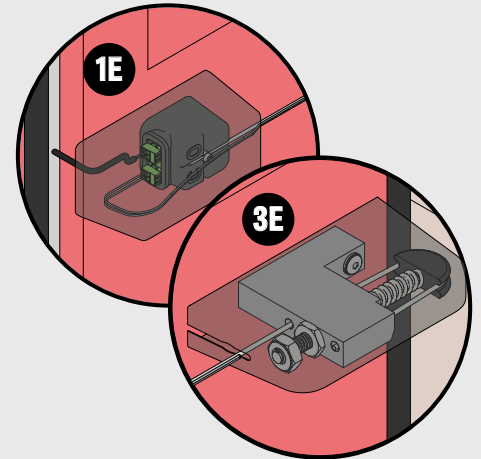
Secure SPK coil bracket appropriately.



Adjust for height.



Adjust for position and secure to the ground.



Cover the components for protection.